

Karst topography in Guilin

Sentinel-1 CSAR IW acquired on **10 February 2015** at 22:32:47 UTC
Sentinel-1 CSAR IW acquired on **05 March 2017** at 10:42:19 UTC
Sentinel-2 MSI acquired on **29 November 2018** at 03:10:51 UTC

Author(s): Sentinel Vision team, VisioTerra, France - svp@visioterra.fr

Keyword(s): Land, relief, urban, karst topography, river, China.

[2D Layerstack](#)

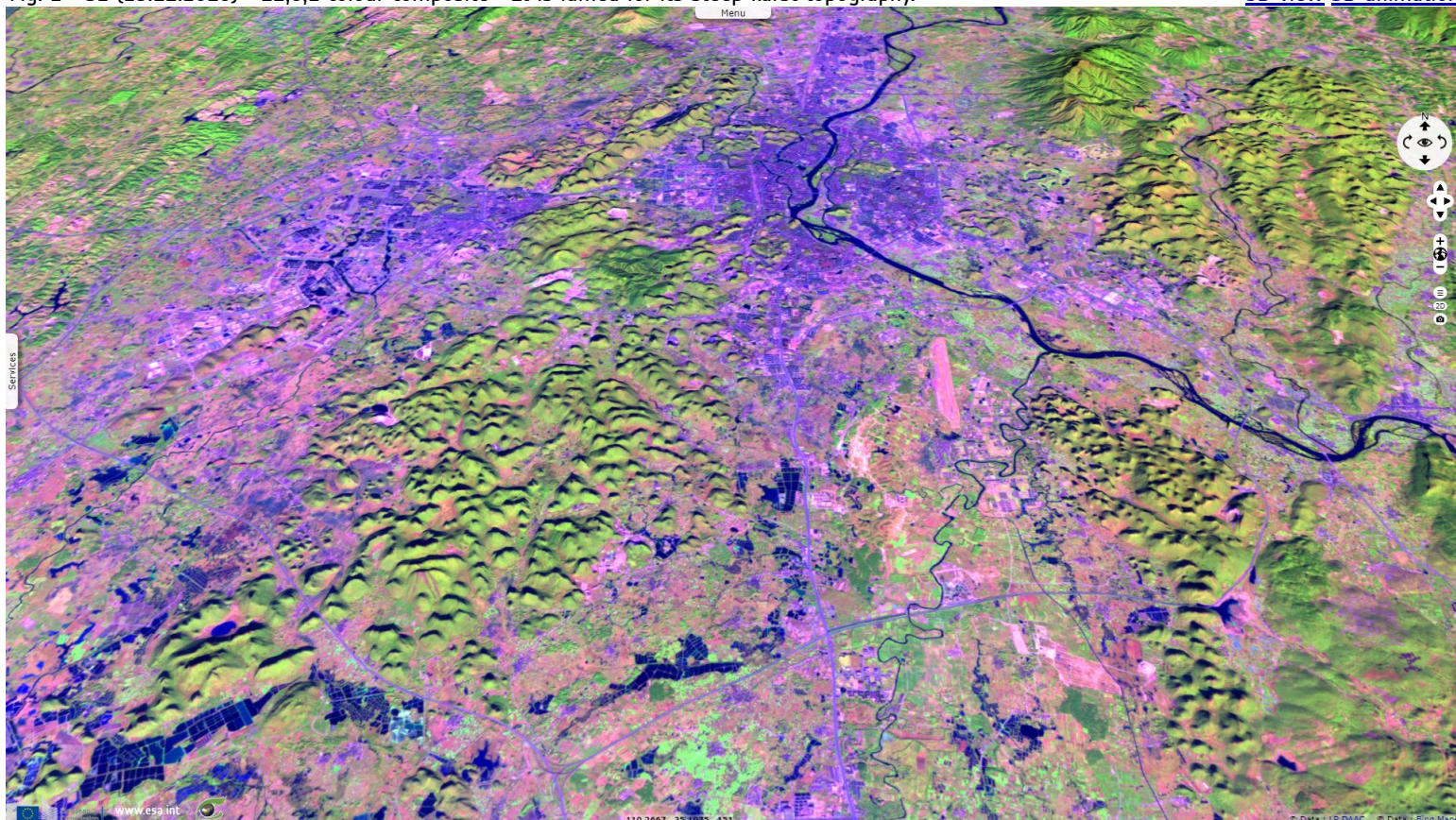
Fig. 1 - S2 (29.11.2018) - 12,11,4 colour composite - Guilin city, South of China

[3D view](#)



Fig. 2 - S2 (29.11.2018) - 11,8,2 colour composite - It is famed for its steep karst topography.

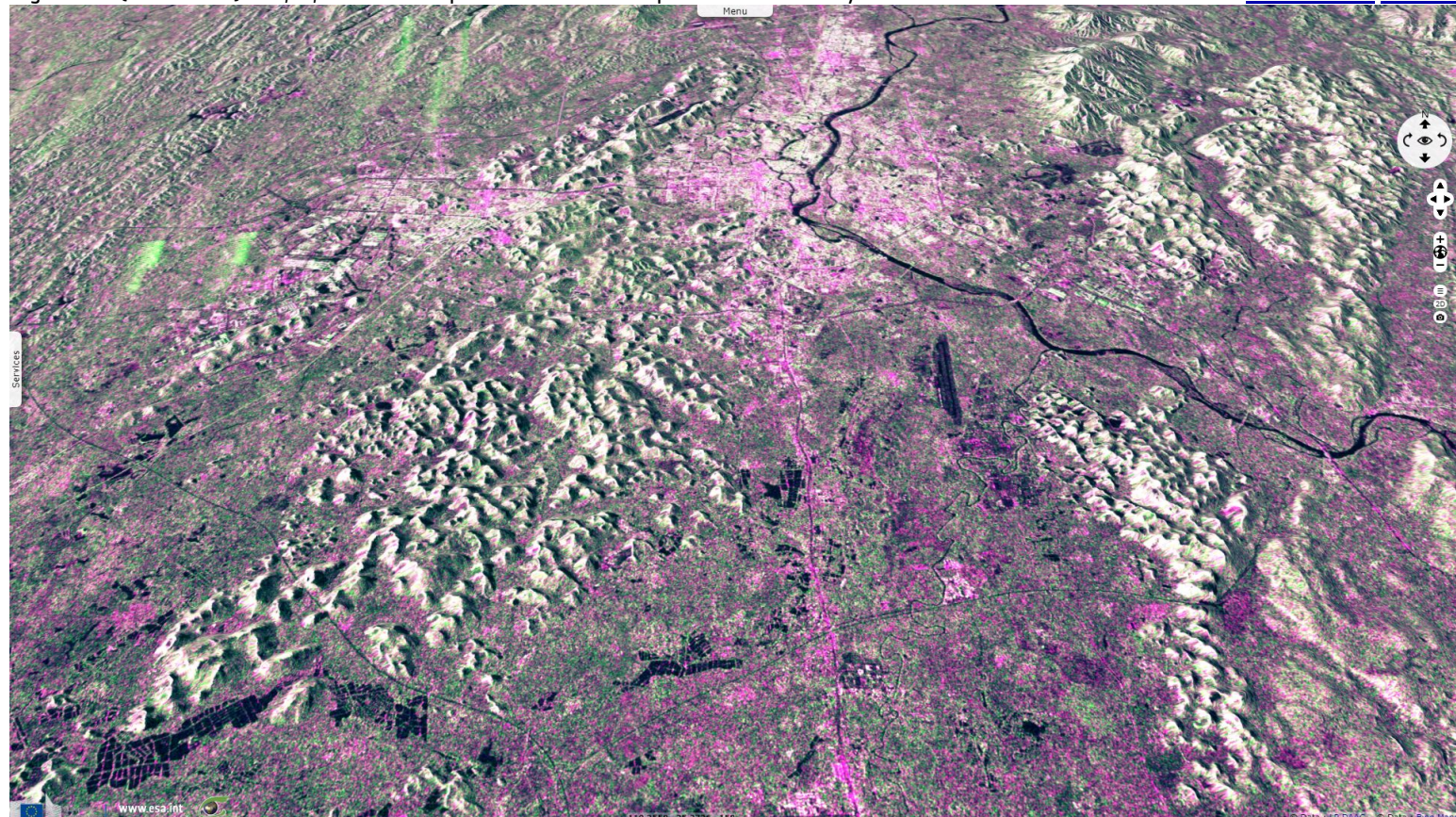
[3D view](#) [3D animation](#)



Most of these green limestone hills are higher than they are large, they are often interspersed by caves.

Fig. 3 - S1 (05.03.2017) - vv,vh,vv colour composite - SRTM-based pixel-scale on-the-fly orthorectification on Guilin.

[3D animation](#) [3D view](#)



Ridgelines & talwegs remain still between optical images, ascending & descending radar images. Illuminated and shadowed sides still differ between acquisitions using the sunlight, east or west-looking radar beams as a source. As a result, images superimpose but bright and dark facets should vary.

Fig. 4 - 11,8,2 colour composite - Karst topology south east of Guilin along the Li river.

[3D animation](#)

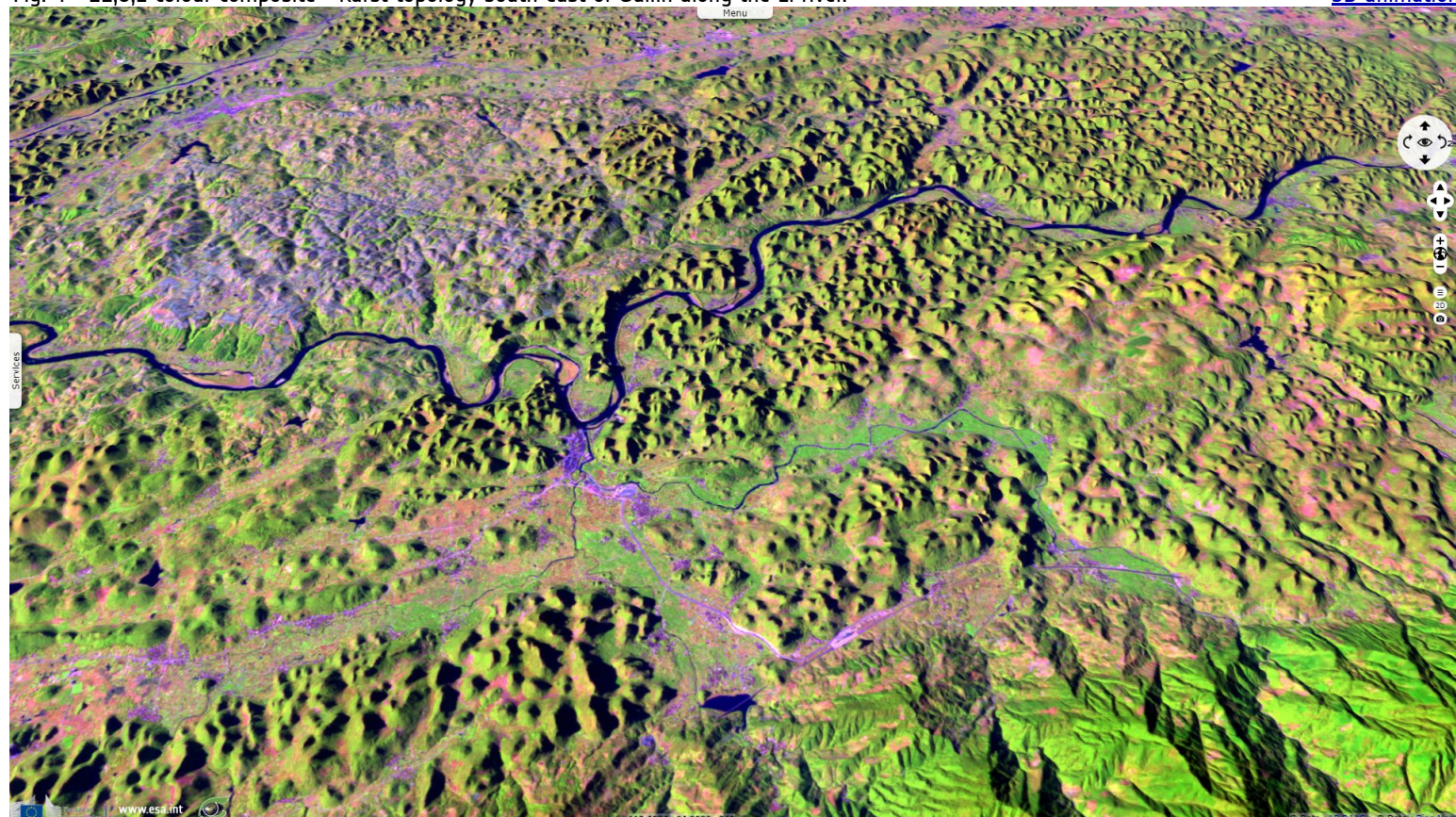
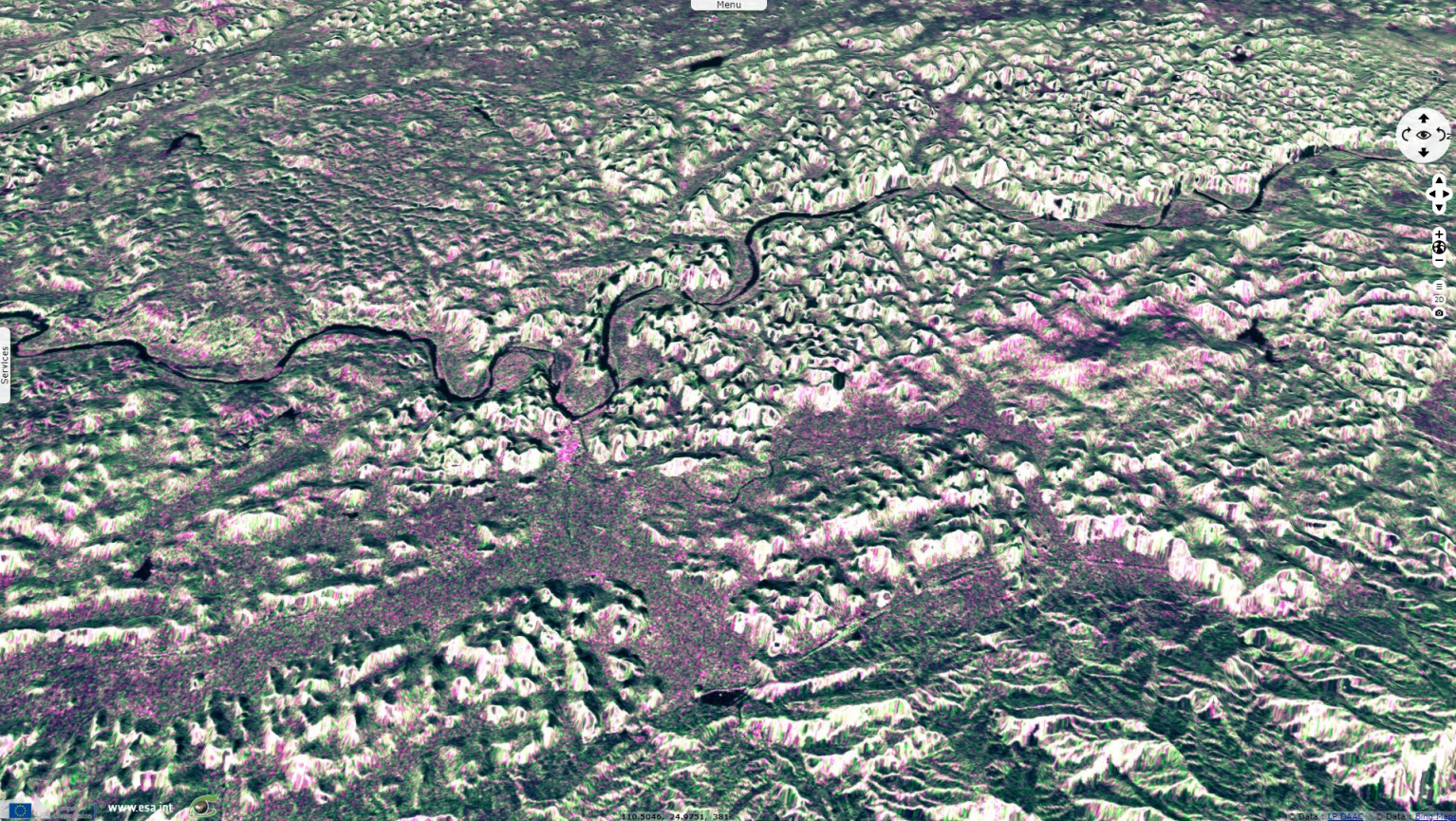














Fig. 5 - S1 (10.02.2015) - vv,vh,vv colour composite - The addition of SRTM DEM shows finer relief on land using the 3D view. [3D animation](#) [3D view](#)



The views expressed herein can in no way be taken to reflect the official opinion of the European Space Agency or the European Union.

More on European Commission space:									
More on ESA:				S-1 website	S-2 website	S-3 website			
More on Copernicus program:				SciHub portal	Cophub portal	Inthub portal	Colhub portal		
More on VisioTerra:				Sentinel Vision Portal	Envisat+ERS portal	Swarm+GOCE portal	CryoSat portal	Proba-V portal	