

# Upcoming opening of a giant bridge in Pearl River Delta

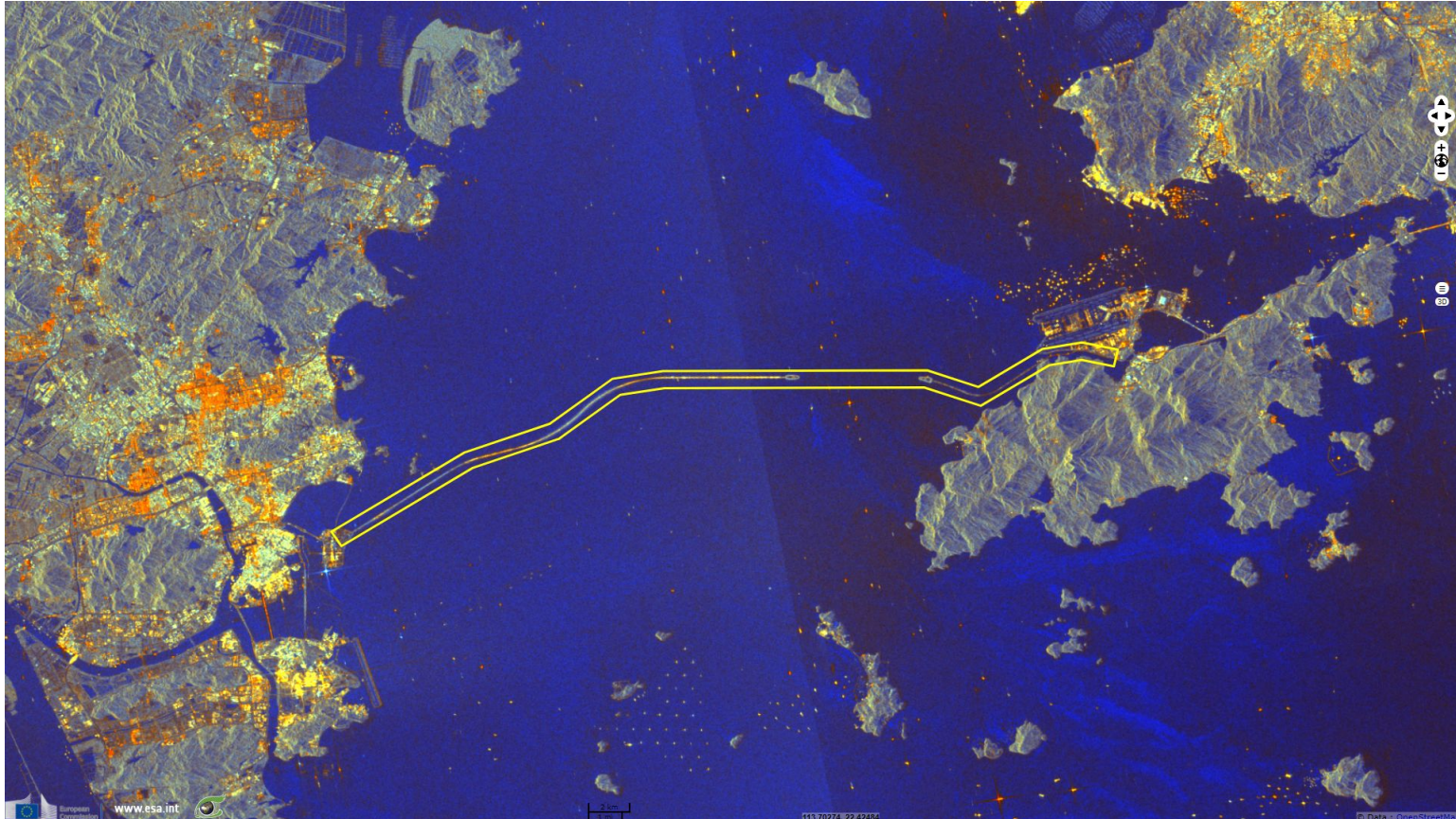
Sentinel-1 CSAR IW acquired on **15 June 2015** at 10:33:12 UTC  
Sentinel-2 MSI acquired on **23 October 2015** at 03:11:42 UTC  
Sentinel-2 MSI acquired on **31 December 2017** at 03:01:21 UTC  
Sentinel-1 CSAR IW acquired on **31 March 2018** at 10:33:09 UTC

Author(s): Sentinel Vision team, VisioTerra, France - [svp@visioterra.fr](mailto:svp@visioterra.fr)

Keyword(s): River, urban planning, bridge, tunnel, road, infrastructure, mobility, alluvions, China

[2D Layerstack](#)

Fig. 1 - S1 IW (31.03.2018) - vv,vh,ndi(vh,vv) colour composite, gamma correction - The Hong-Kong Macau Bridge should open in July 2018. [2D view](#)



This 55km bridge is a series of 3 viaducts and 1 tunnel. It should shorten the passage between these Chinese tax havens from 3h to 45mn.

Fig. 2 - S2 MSI (31.12.2017) - 4,3,2 natural colour - Its construction by China Harbor & Bouygues started in 2009 & costed ~15.5 billion €. [2D view](#)

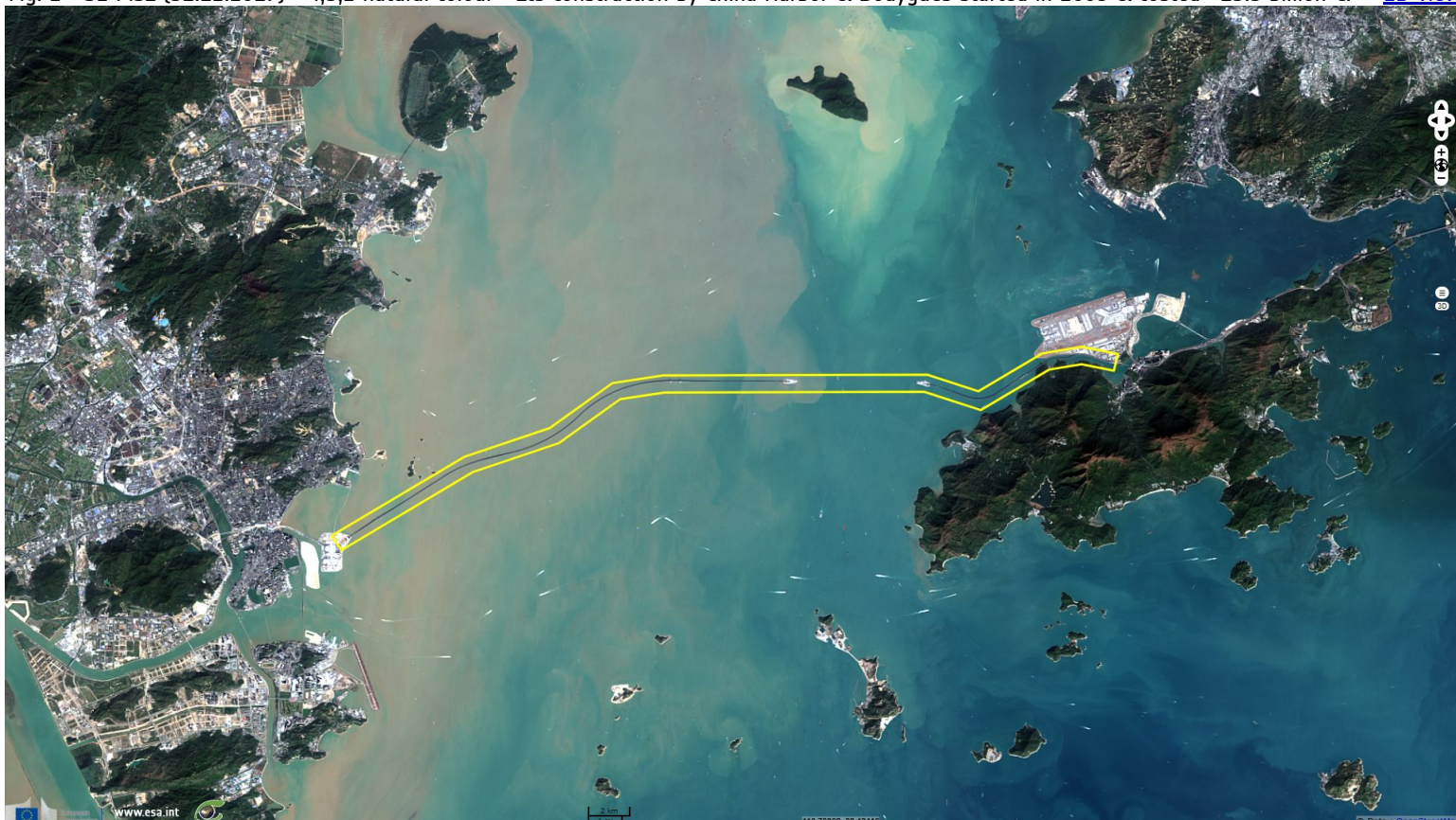




Fig. 3 - S1 IW (15.06.2015) - The western section of the bridge tunnel in 2015, it now links two artificial islands.

[2D animation](#)

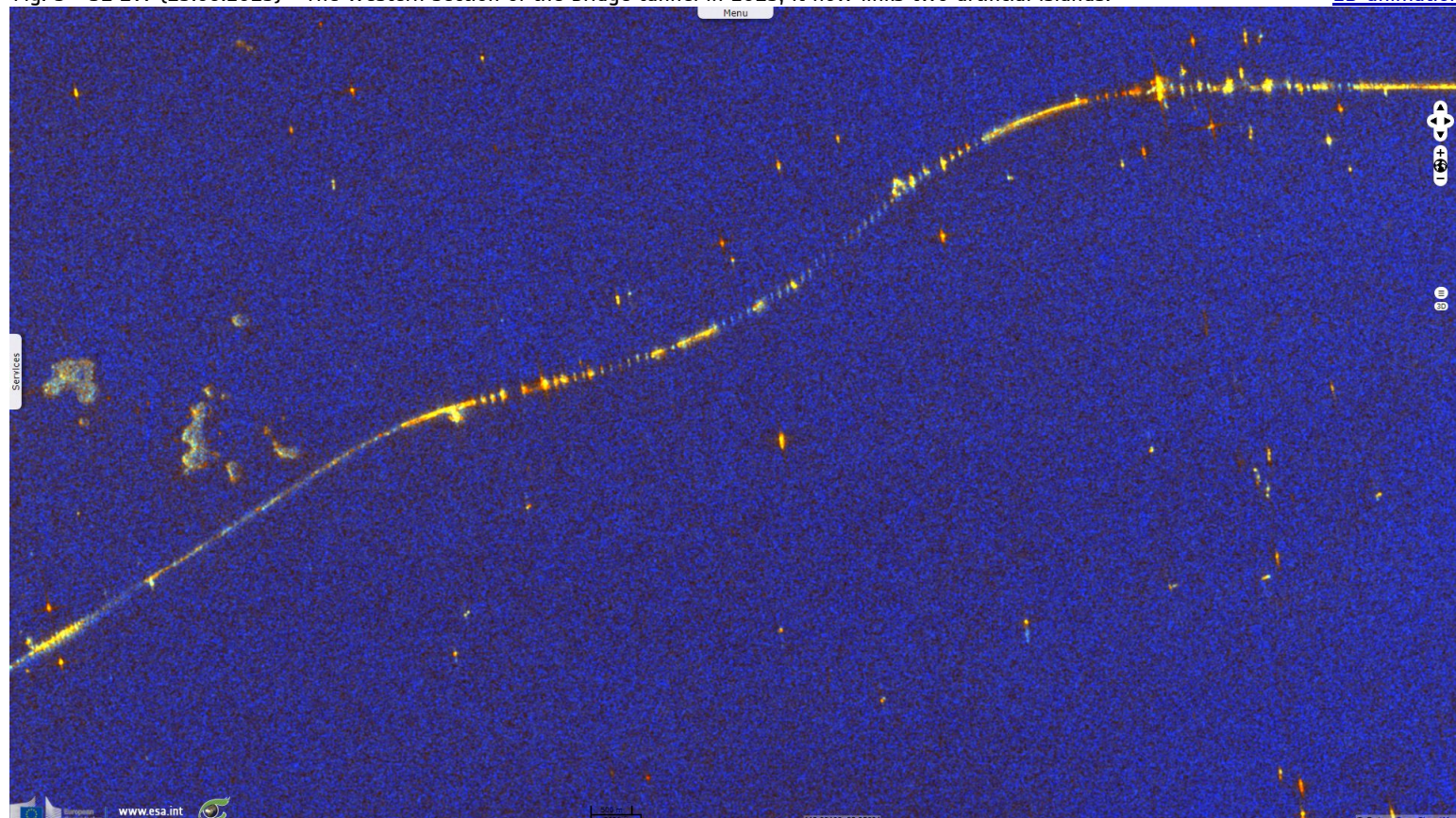








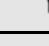





Fig. 4 - S2 MSI (23.10.2015) - The eastern section of the bridge tunnel in 2015; the tunnel allows container ships or ferries to cross.

[2D animation](#)



*The views expressed herein can in no way be taken to reflect the official opinion of the European Space Agency or the European Union.*

More on European Commission space:									
More on ESA:				<a href="#">S-1 website</a>	<a href="#">S-2 website</a>	<a href="#">S-3 website</a>			
More on Copernicus program:				<a href="#">SciHub portal</a>	<a href="#">Cophub portal</a>	<a href="#">Inthub portal</a>	<a href="#">Colhub portal</a>		
More on VisioTerra:				<a href="#">Sentinel Vision Portal</a>	<a href="#">Envisat+ERS portal</a>	<a href="#">Swarm+GOCE portal</a>	<a href="#">CryoSat portal</a>	<a href="#">Proba-V portal</a>	