

A fire spreads in the biggest refugees camp at Kutupalong, Bangladesh

Sentinel-2 MSI acquired on 05 January 2016

Sentinel-2 MSI acquired on 14 March 2021

Sentinel-2 MSI acquired on 24 March 2021

Author(s): Sentinel Vision team, VisioTerra, France - svp@visioterra.fr

Keyword(s): Fire, emergency, refugees camp, Bangladesh, Myanmar, Burma.

Fig. 1 - S2 (24.03.2021) - A fire has spread in Kutupalong Rohingyas refugees camp, in Bangladesh near the border with Myanmar.

[2D Animation](#)

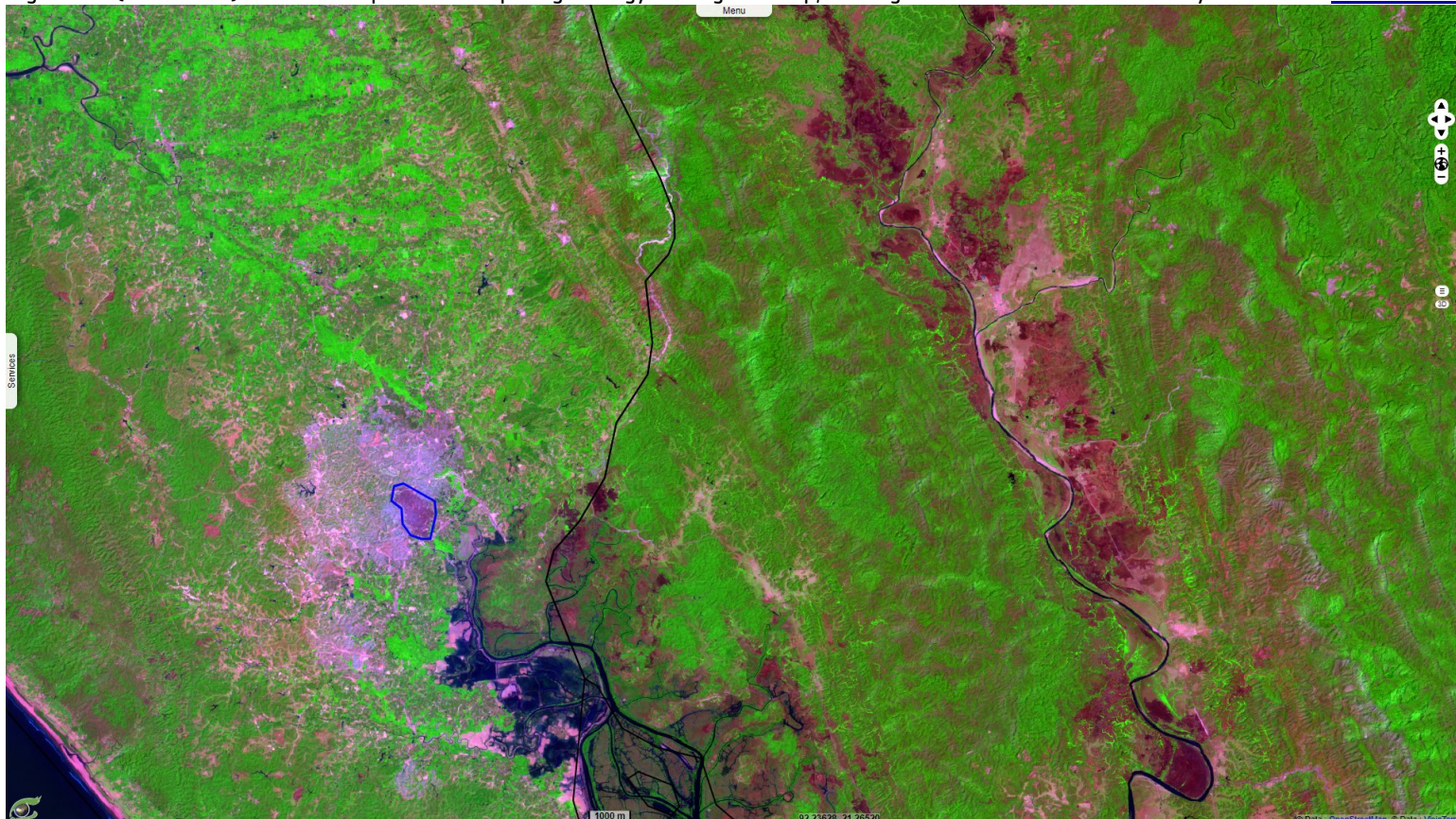


Fig. 2 - S2 (24.03.2021) - Normalised Burnt Ratio - It happened at the same time multiple fires happened in the region.

[2D Animation](#)

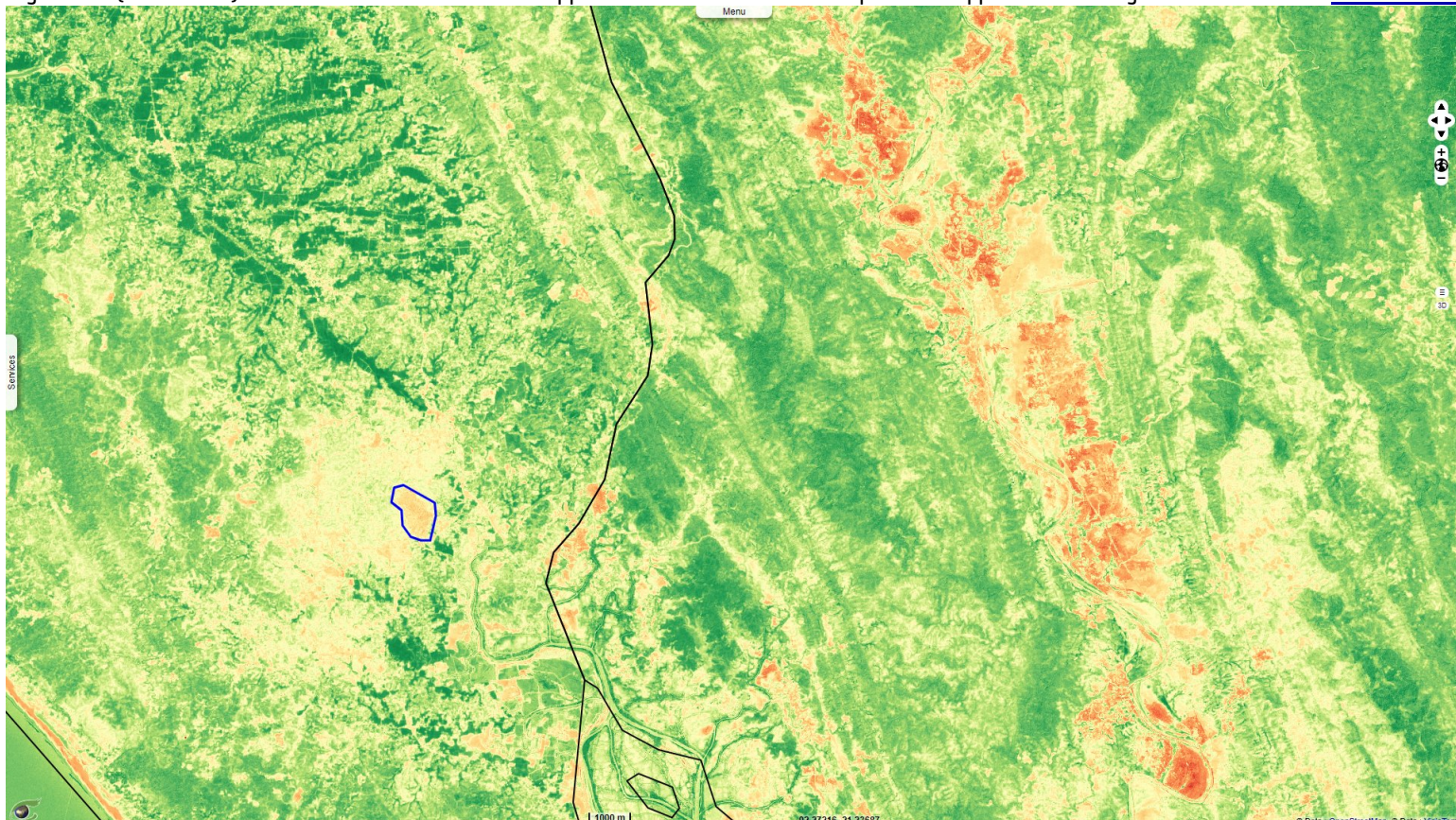


Fig. 3 - S2 (05.01.2016) - The two refugee camps of Kutupalong & Nayapara had a combined population of ~34 000 registered refugees in July 2017.

[2D View](#)

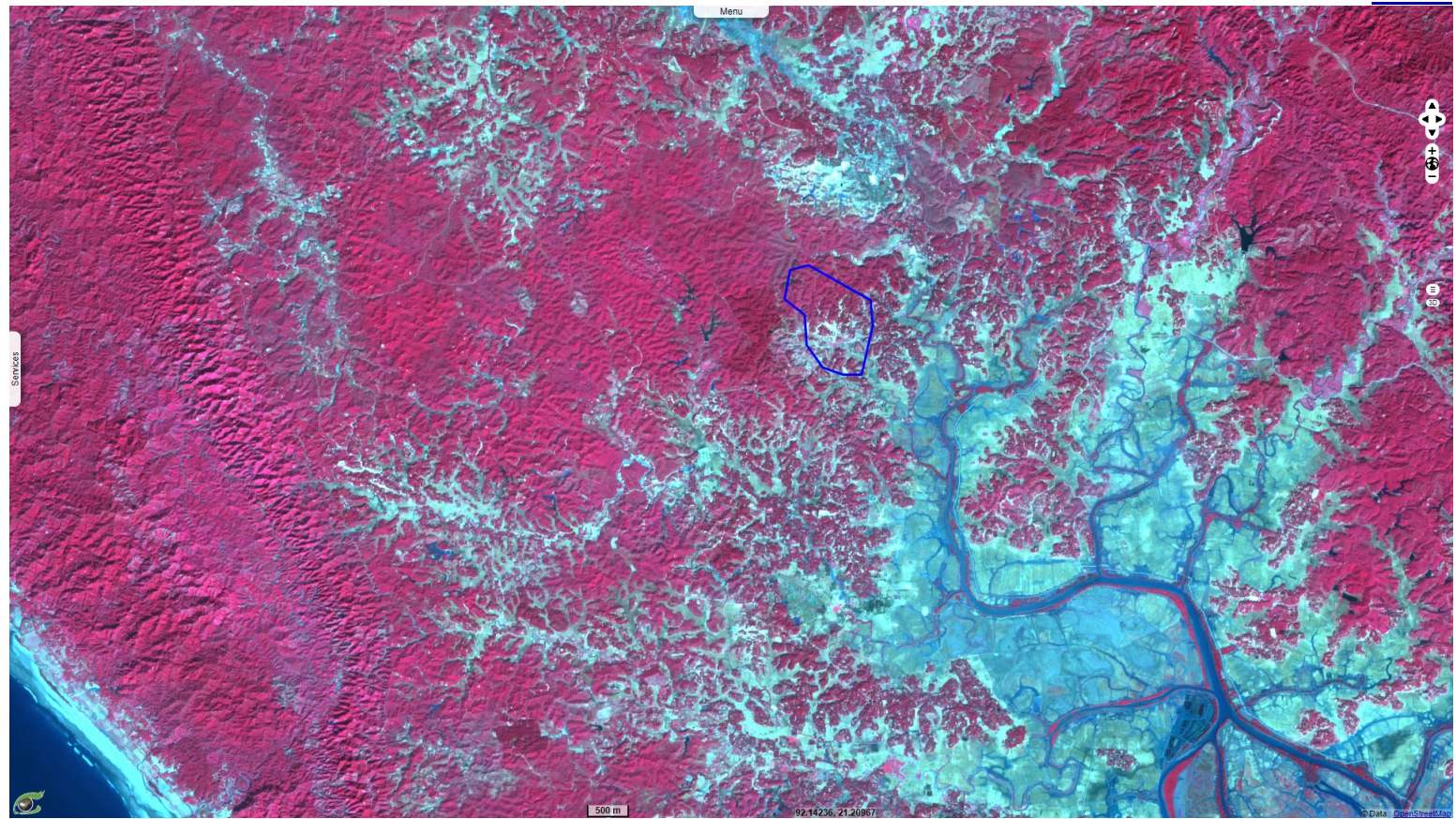
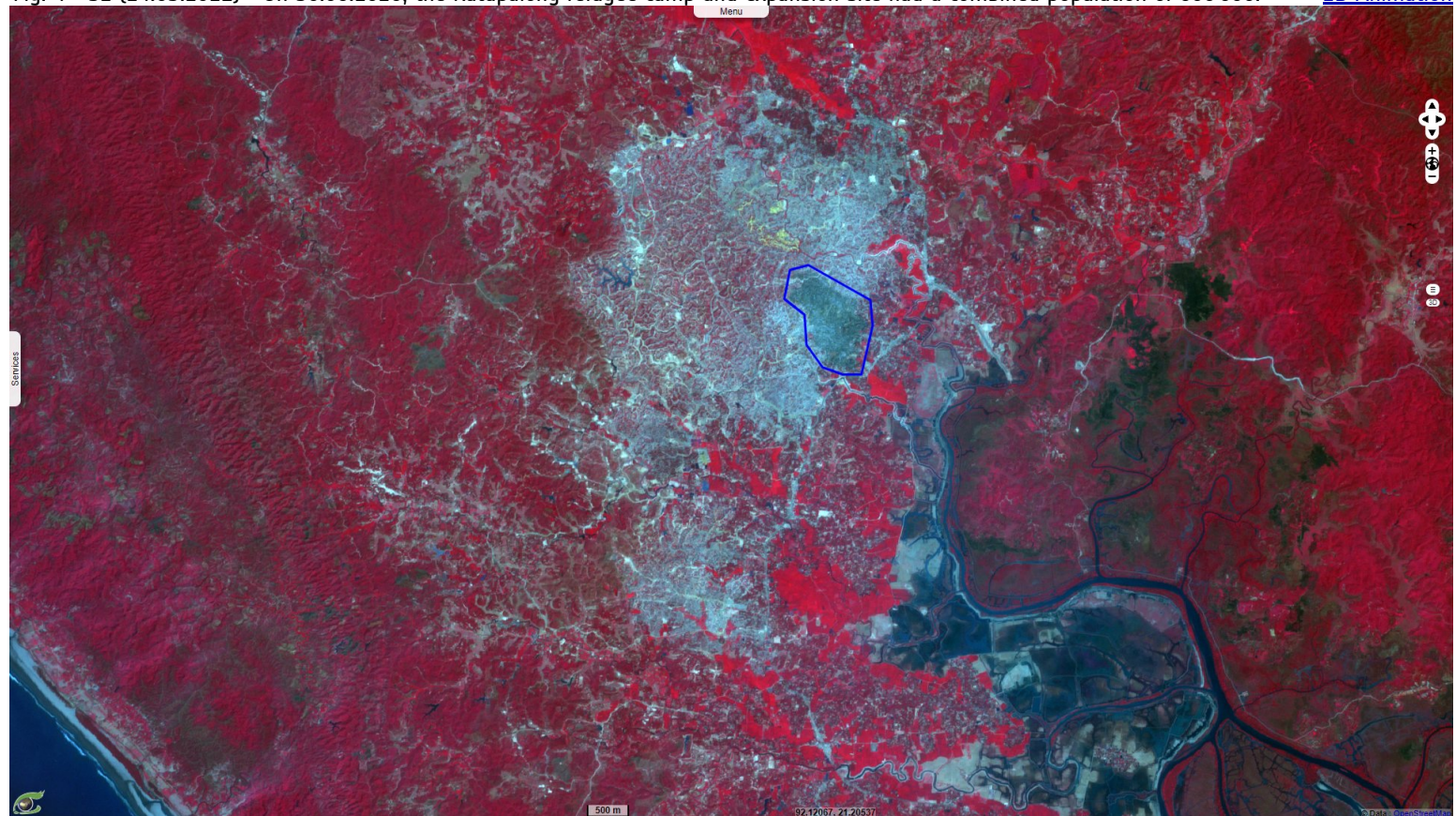
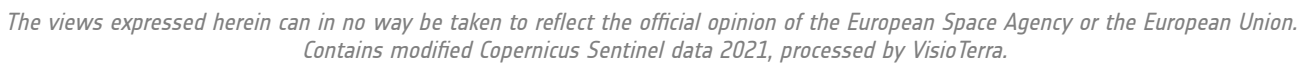




Fig. 4 - S2 (24.03.2021) - On 30.06.2020, the Kutupalong refugee camp and expansion site had a combined population of 600 000.

[2D Animation](#)



2D View





 Funded by the EU and ESA
 EVT-831-SentinelVision
 powered by 