



[2D Layerstack](#)

Salar de Uyuni, World's largest salt desert, Bolivia

Sentinel-3 SRAL LAND acquired on 15, 16, 25, 26, 29 and 30 December 2022
Sentinel-1 CSAR IW acquired on 02 January 2023 at 10:00:24 UTC
Sentinel-2 MSI acquired on 03 January 2023 at 14:37:29 UTC
Photos shot by Paul Gross in December 2013

Author(s): Sentinel Vision team, VisioTerra, France - svp@visioterra.fr

Keyword(s): Land, salar, desert, geology, Uyuni, Bolivia

Fig. 1 - Salar de Uyuni is the largest salar in the world with an area over 10,000 km². It is located in the southwest of Bolivia. [2D view](#)



Fig. 2 - S2 [03.01.2023] - Natural and false colour composites showing the wealth of the Salar de Uyuni landscape. [2D view](#) [2D view](#)

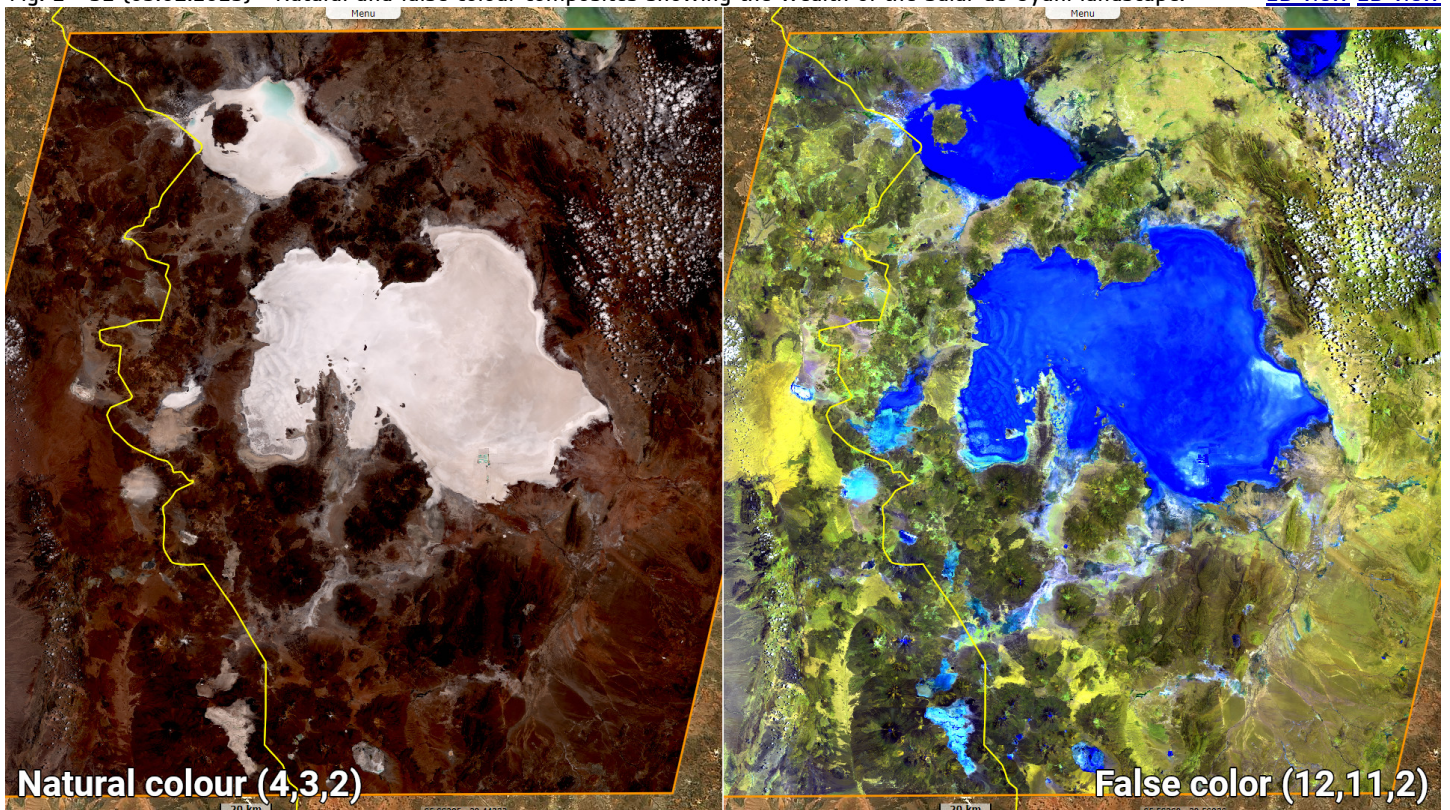


Fig. 3 - S1 (02.01.2023) - Here is a radar view showing structural patterns hardly visible in the optical views.

[2D view](#)

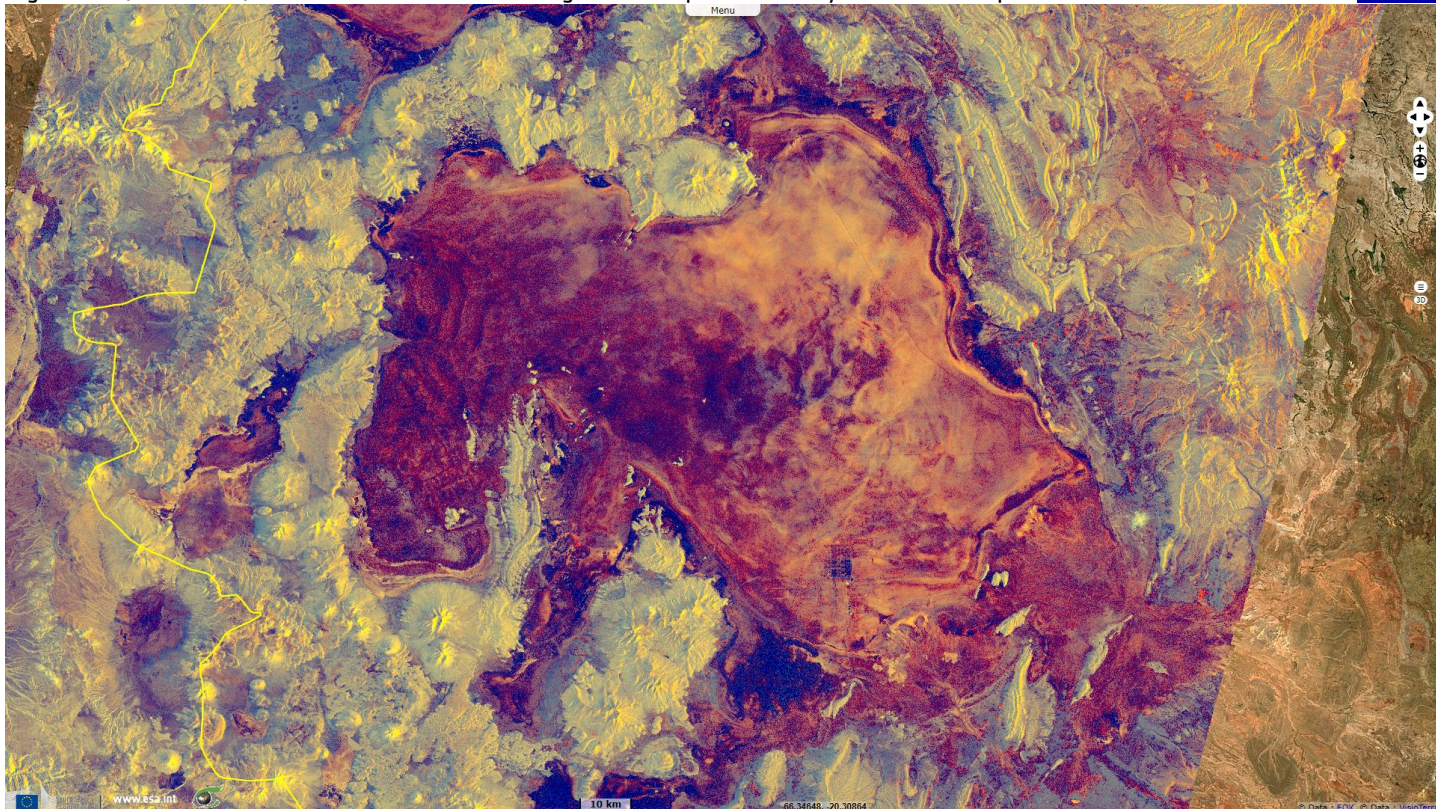
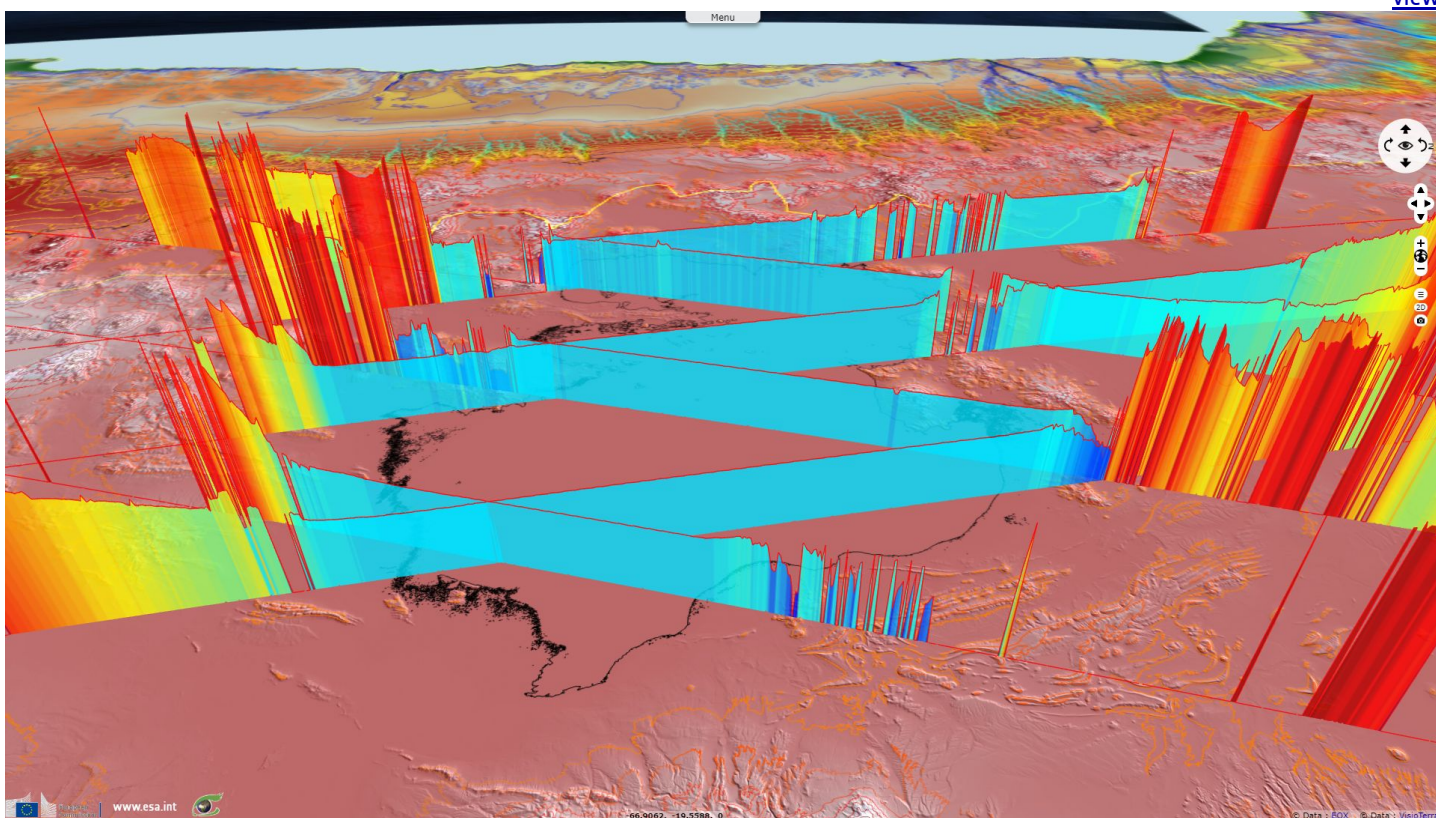


Fig. 4 - S3 SRAL - The salar is known to be one of the world's flattest area. The elevation variation is within one meter over all the area. [3D view](#)



*The views expressed herein can in no way be taken to reflect the official opinion of the European Space Agency or the European Union.
Contains modified Copernicus Sentinel data 2023, processed by VisioTerra.*

More on European Commission space:						
More on ESA:				S-1 website	S-2 website	S-3 website
More on Copernicus program:				SciHub portal	Cophub portal	Inthub portal
More on VisioTerra:				Sentinel Vision Portal	Envisat+ERS portal	Swarm+GOCE portal

Funded by the EU and ESA

SED-1209-SentinelVision

powered by

