

Avalanche on the Ecstall River in British Columbia, Canada

Sentinel-2 MSI acquired on 20 August 2022 at 19:49:11 UTC
Sentinel-2 MSI acquired on 09 September 2022 at 19:50:01 UTC

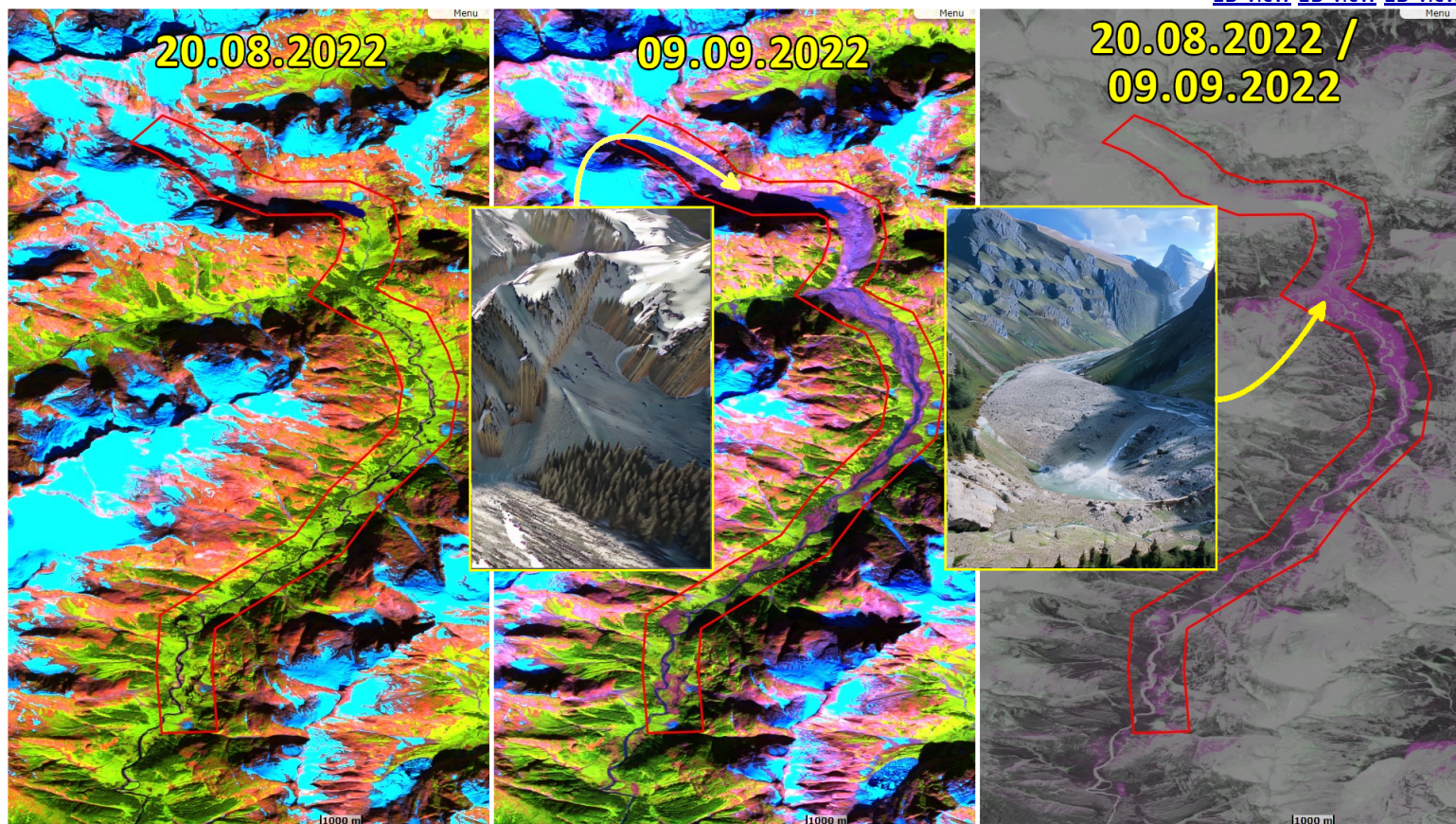
Author(s): Sentinel Vision team, VisioTerra, France - svp@visioterra.fr

Keyword(s): Geohazard, valley, avalanche, ice, landslide, mountain, erosion, biodiversity, Kitimat Ranges, Canada

[2D Layerstack](#)

Fig. 1 - S2 (20.08.2022) / (09.09.2022) / (20.08.2022; 09.09.2022) - A rock avalanche on the Ecstall River slammed into a lake and created a downstream flood.

[2D view](#) [2D view](#) [2D view](#)



It destroyed all of the salmon habitat in the upper part of the river system and washed tonnes of debris into the lower section of the river, impacting more than 10 000 fish, possibly more than 100 000. It will likely take several years, potentially decades for the system to re-stabilize

*The views expressed herein can in no way be taken to reflect the official opinion of the European Space Agency or the European Union.
Contains modified Copernicus Sentinel data 2022, processed by VisioTerra.*

More on European Commission space:						
More on ESA:				S-1 website	S-2 website	S-3 website
More on Copernicus program:				SciHub portal	CopHub portal	Inthub portal Colhub portal
More on VisioTerra:				Sentinel Vision Portal	Envisat+ERS portal	Swarm+GOCE portal CryoSat portal