

# Volga River coloured in bright green, Russia

Sentinel-2 MSI acquired on 08 August 2016 at 08:00:12 UTC

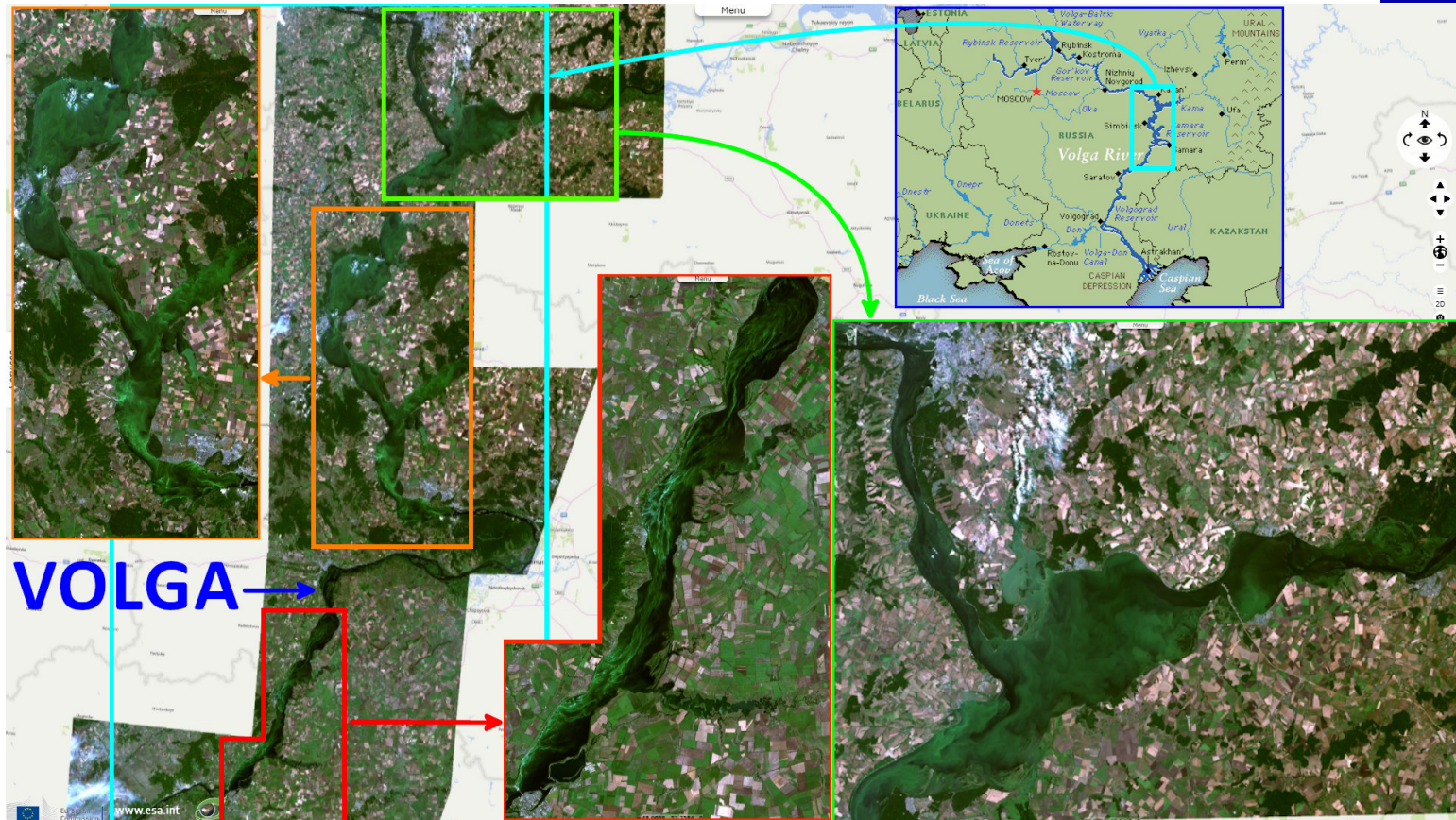
Author(s): Sentinel Vision team, VisioTerra, France - [syp@visioterra.fr](mailto:syp@visioterra.fr)

Keyword(s): Water colour, water quality, pollution, agriculture, river, reservoir lake, dam, Russia

2D Layerstack

Fig. 1 - S2 (08.08.2016) - Green algae or cyanobacteria have turned the Volga River in green on this image, possibly due to excess use of fertilizers.

3D view



The Volga is the longest river in Europe with 3531 km, flowing from an altitude of 228 m to -28 m. It is also Europe's largest river in terms of average discharge at delta at 8000-8500 m<sup>3</sup>/s and of drainage basin with a catchment area of 1 360 000 km<sup>2</sup>. Samara reservoir, a 550 km long reservoir created by the Samara dam: with its 6450 km<sup>2</sup> surface area, it is the largest reservoir in Europe. The Kama River joins the Volga by flowing into this lake.

*The views expressed herein can in no way be taken to reflect the official opinion of the European Space Agency or the European Union.  
Contains modified Copernicus Sentinel data 2022, processed by VisioTerra.*

More on European Commission space:						
More on ESA:				<a href="#">S-1 website</a>	<a href="#">S-2 website</a>	<a href="#">S-3 website</a>
More on Copernicus program:				<a href="#">SciHub portal</a>	<a href="#">Cophub portal</a>	<a href="#">Inthub portal</a>
More on VisioTerra:				<a href="#">Sentinel Vision Portal</a>	<a href="#">Envisat+ERS portal</a>	<a href="#">Swarm+GOCE portal</a>
				<a href="#">CryoSat portal</a>		