

Plitvice lakes national park, Croatia

Sentinel-2 MSI acquired on 30 September 2018 at 09:50:31 UTC
Sentinel-1 CSAR IW acquired on 13 August 2020 from 05:02:14 to 05:02:39 UTC
Sentinel-1 CSAR IW acquired on 14 August 2020 from 16:49:10 to 16:49:34 UTC

Author(s): Sentinel Vision team, VisioTerra, France - syp@visioterra.fr

Keyword(s): Lake, hydrology, UNESCO World Heritage, Croatia.



[2D Layerstack](#)

Fig. 1 - S1 (13.08.2020) - Plitvice lakes national park is in the mountainous karst area of central Croatia, at the border to Bosnia–Herzegovina [2D view](#)

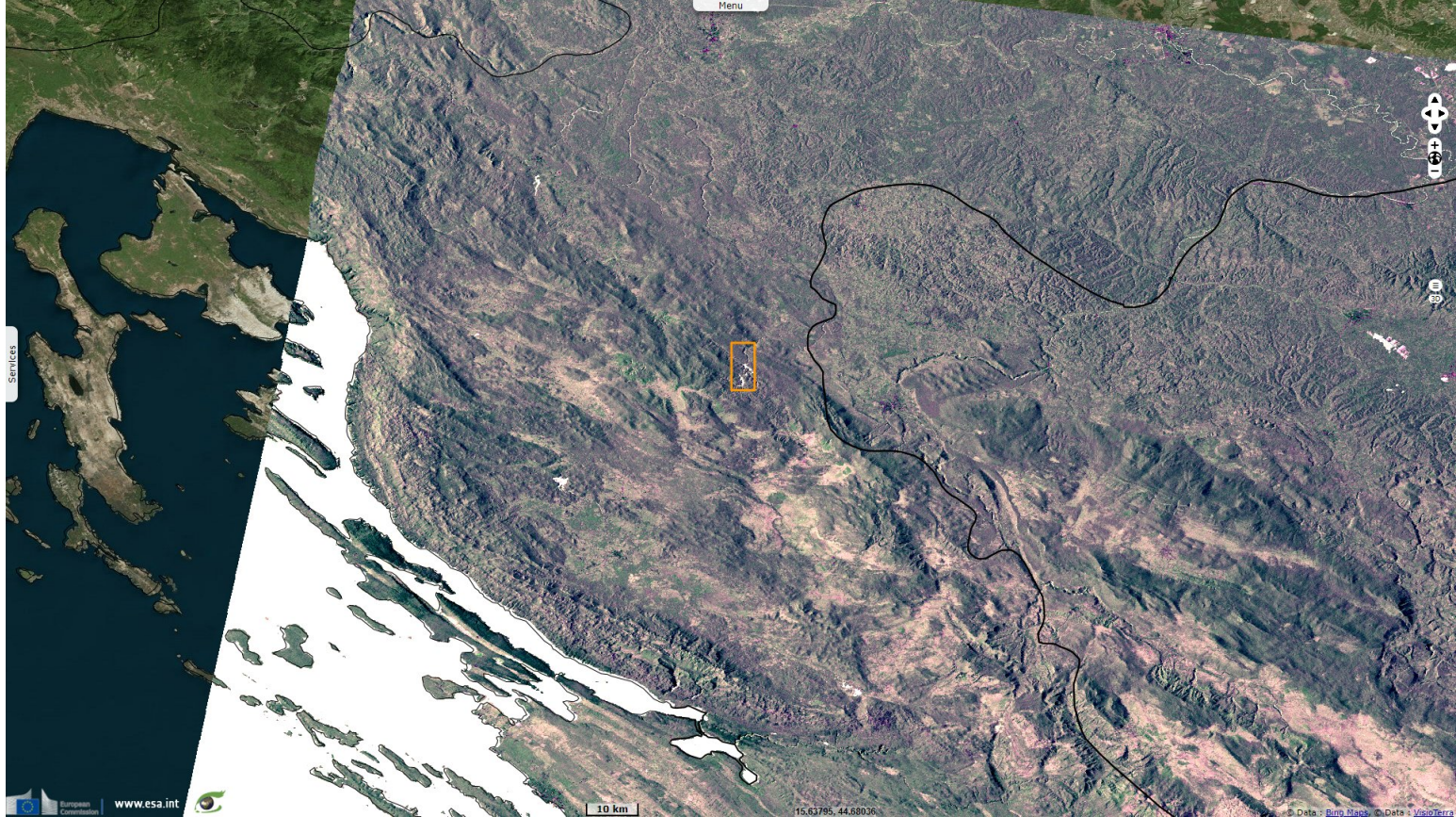
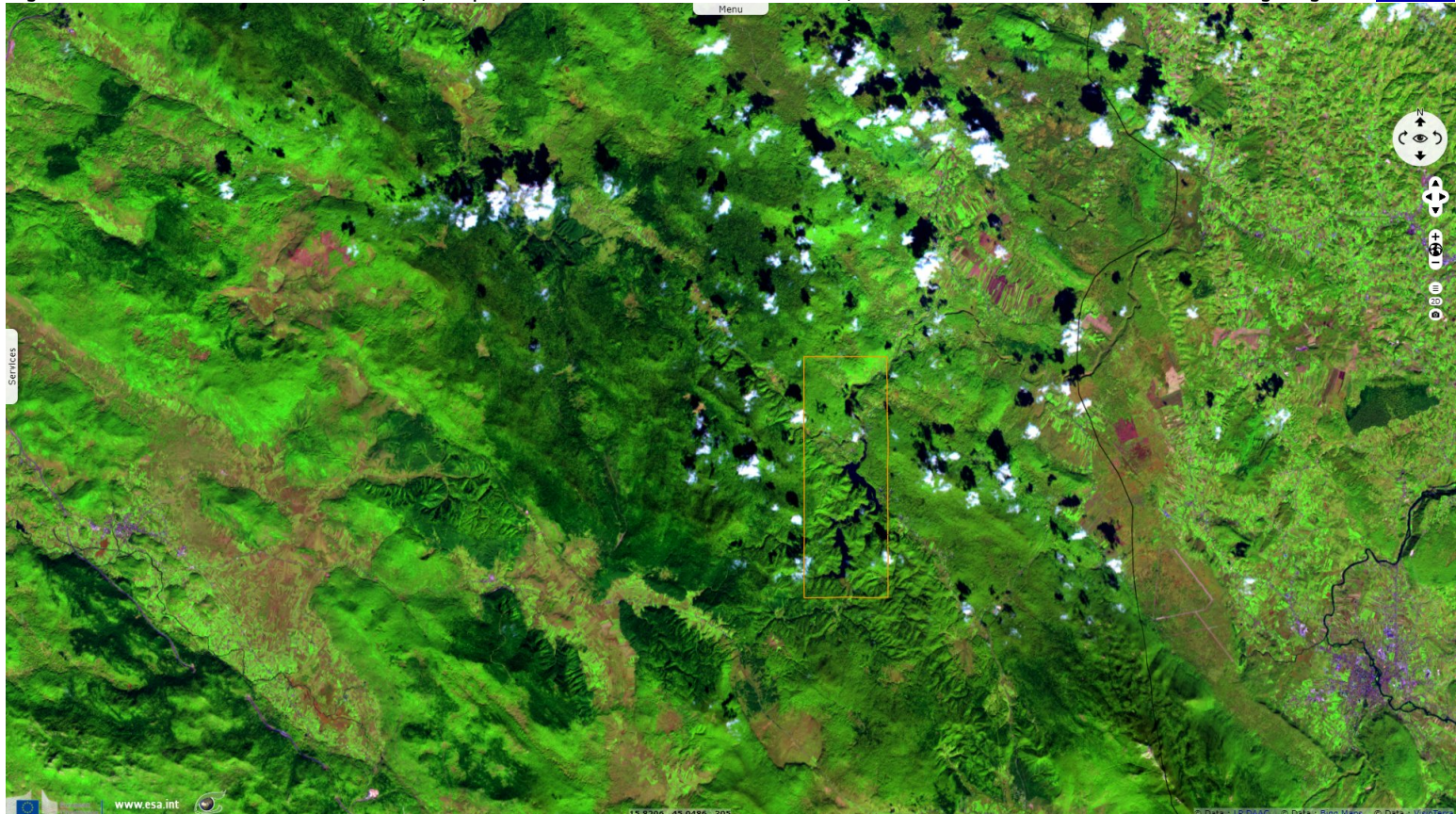


Fig. 2 - S2 (30.09.2018) - Founded in 1949, the park extends over 296.85 km². In 1979, it was added to the UNESCO World Heritage register. [3D view](#)



The confluence of several small rivers & subterranean karst rivers resulted in its 16 lakes, all interconnected and arranged in cascades.

Fig. 3 - S1 (14.08.2020) - The 16 lakes are separated into an upper and lower cluster formed by runoff from the mountains.

[3D view](#)

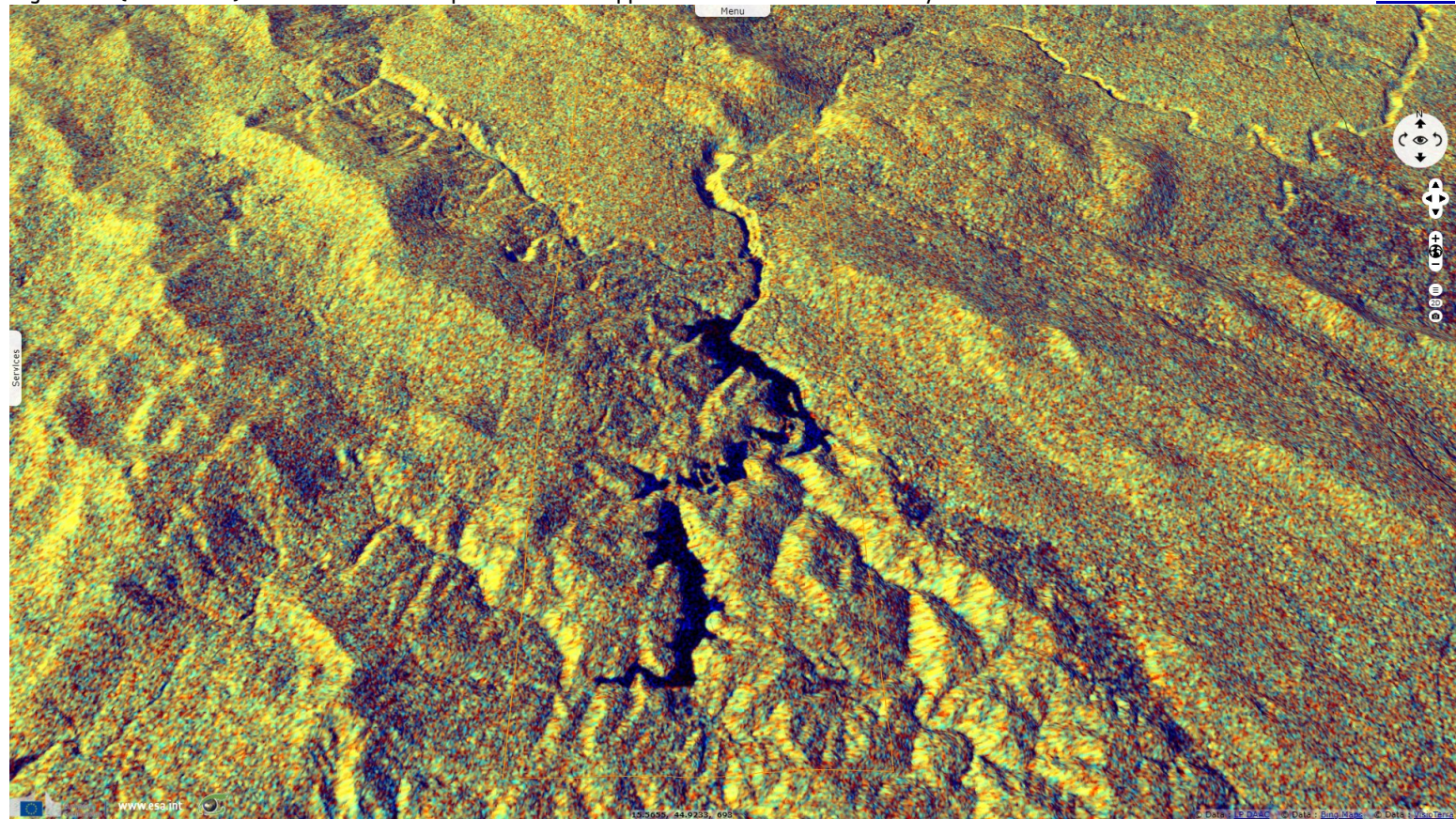
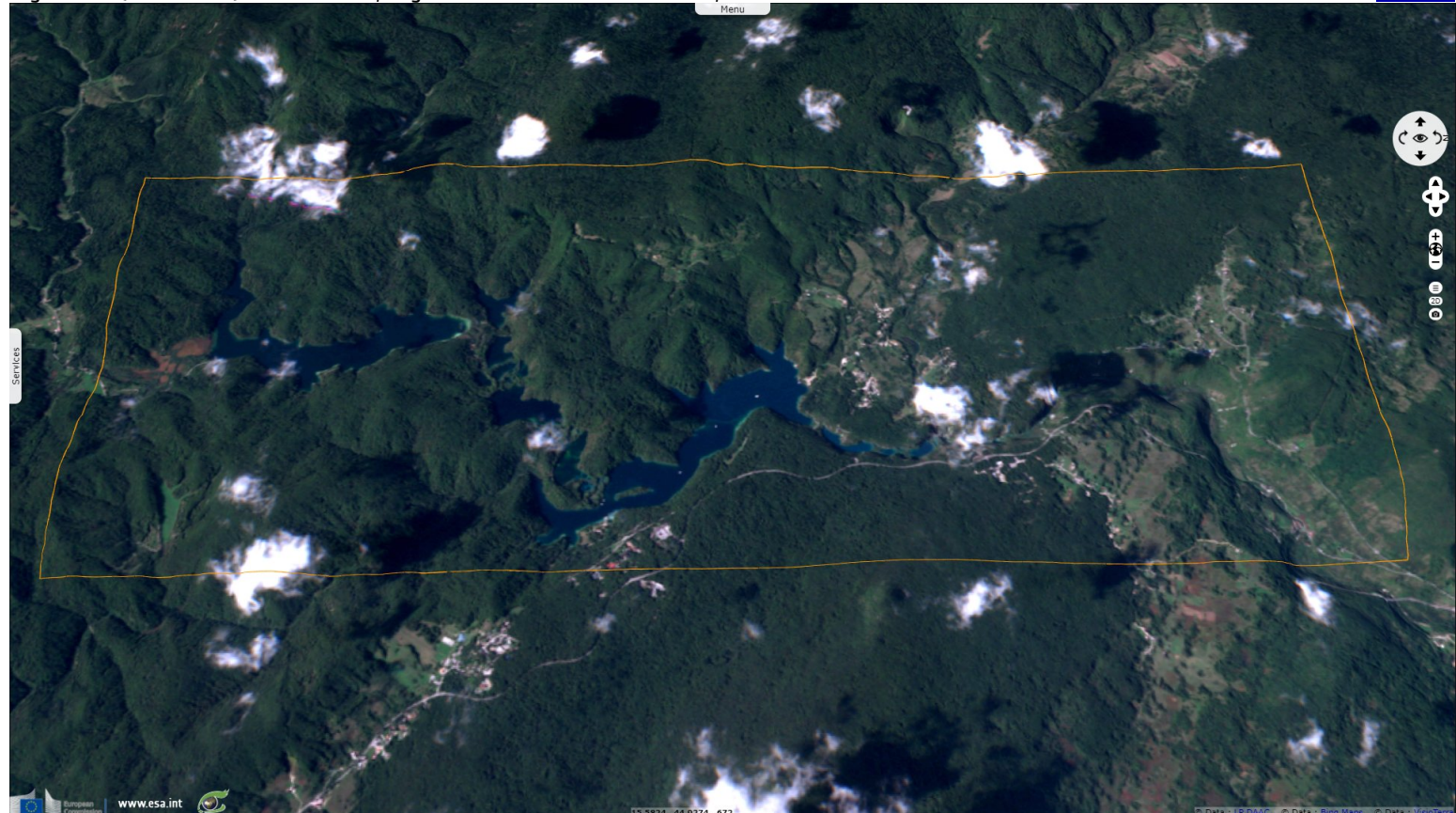


Fig. 4 - S2 (30.09.2018) - These lakes, aligned in a south–north direction, descend from 636 m to 503 m over 8 km.

[3D view](#)



*The views expressed herein can in no way be taken to reflect the official opinion of the European Space Agency or the European Union.
Contains modified Copernicus Sentinel data 2020, processed by VisioTerra.*

More on European Commission space:							
More on ESA:				S-1 website	S-2 website	S-3 website	
More on Copernicus program:				SciHub portal	Cophub portal	Inthub portal	Colhub portal
More on VisioTerra:				Sentinel Vision Portal	Envisat+ERS portal	Swarm+GOCE portal	CryoSat portal