

Mangroves of Akanda & Pongara National Parks, Gabon

Sentinel-2 MSI acquired on 07 March 2021 at 09:30:39 UTC
Sentinel-1 CSAR IW acquired on 28 July 2021 at 05:07:05 UTC
Sentinel-1 CSAR IW acquired on 09 August 2021 at 05:07:05 UTC
Sentinel-1 CSAR IW acquired on 21 August 2021 at 05:07:06 UTC

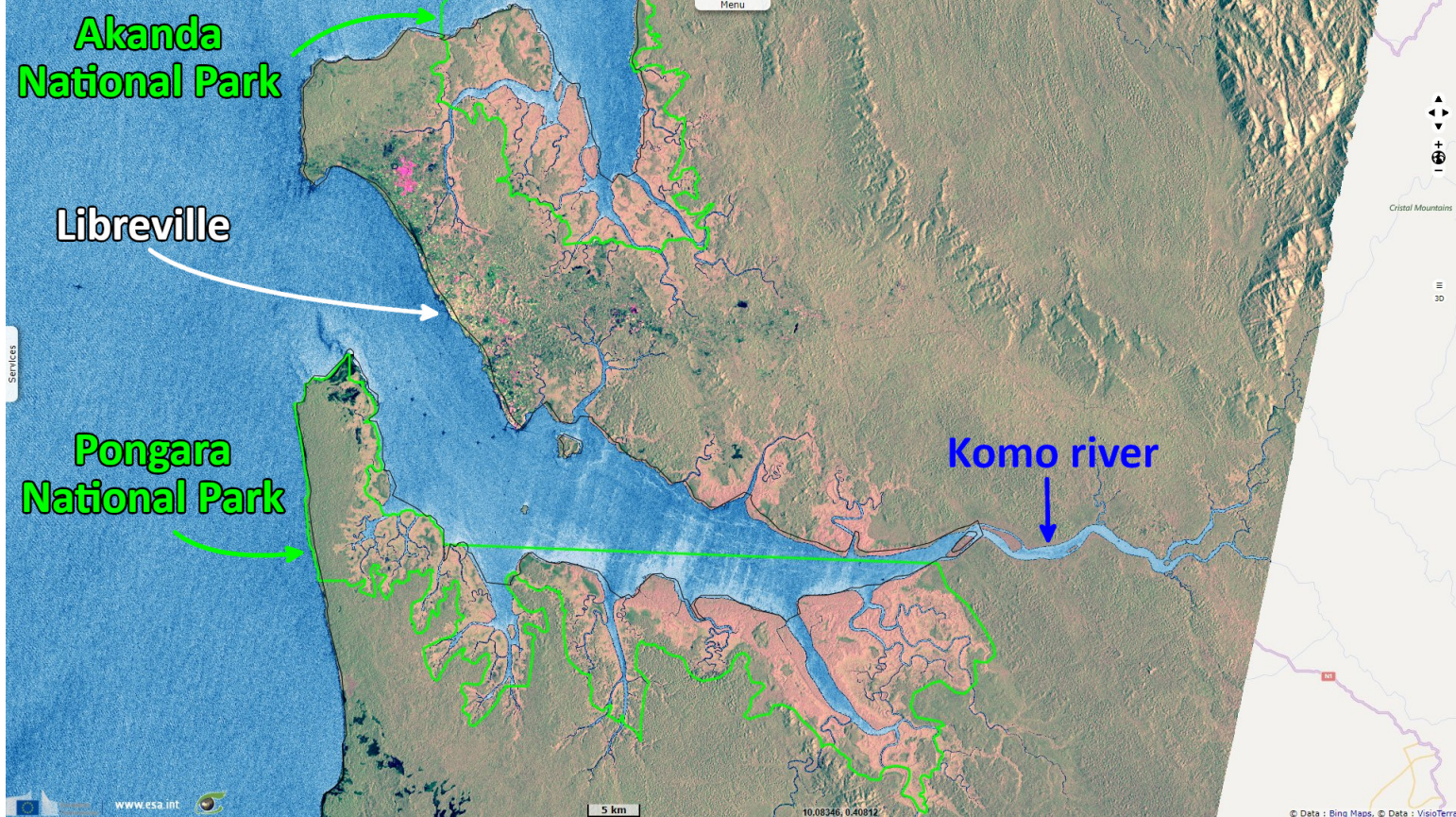
Author(s): Sentinel Vision team, VisioTerra, France - svp@visioterra.fr

Keyword(s): Coastal, forestry, mangrove, biodiversity, tourism, National Parks, Ramsar wetland site, Gabon



[2D Layerstack](#)

Fig. 1 - S1 (28.07.2021->31.08.2021) - Pongara National Park lies on the southern bank of the estuary of Komo river, south of Libreville. [2D view](#)



Gabon has 2.5% of the total mangrove in Africa, yet Akanda & Pongara parks comprise 25% of the total protected mangrove in the continent.

Fig. 2 - S1 (28.07.2021->31.08.2021) - Zoom on Akanda National Park that encompasses 350km² around Mondah Bay, north-east of Libreville. [2D view](#)

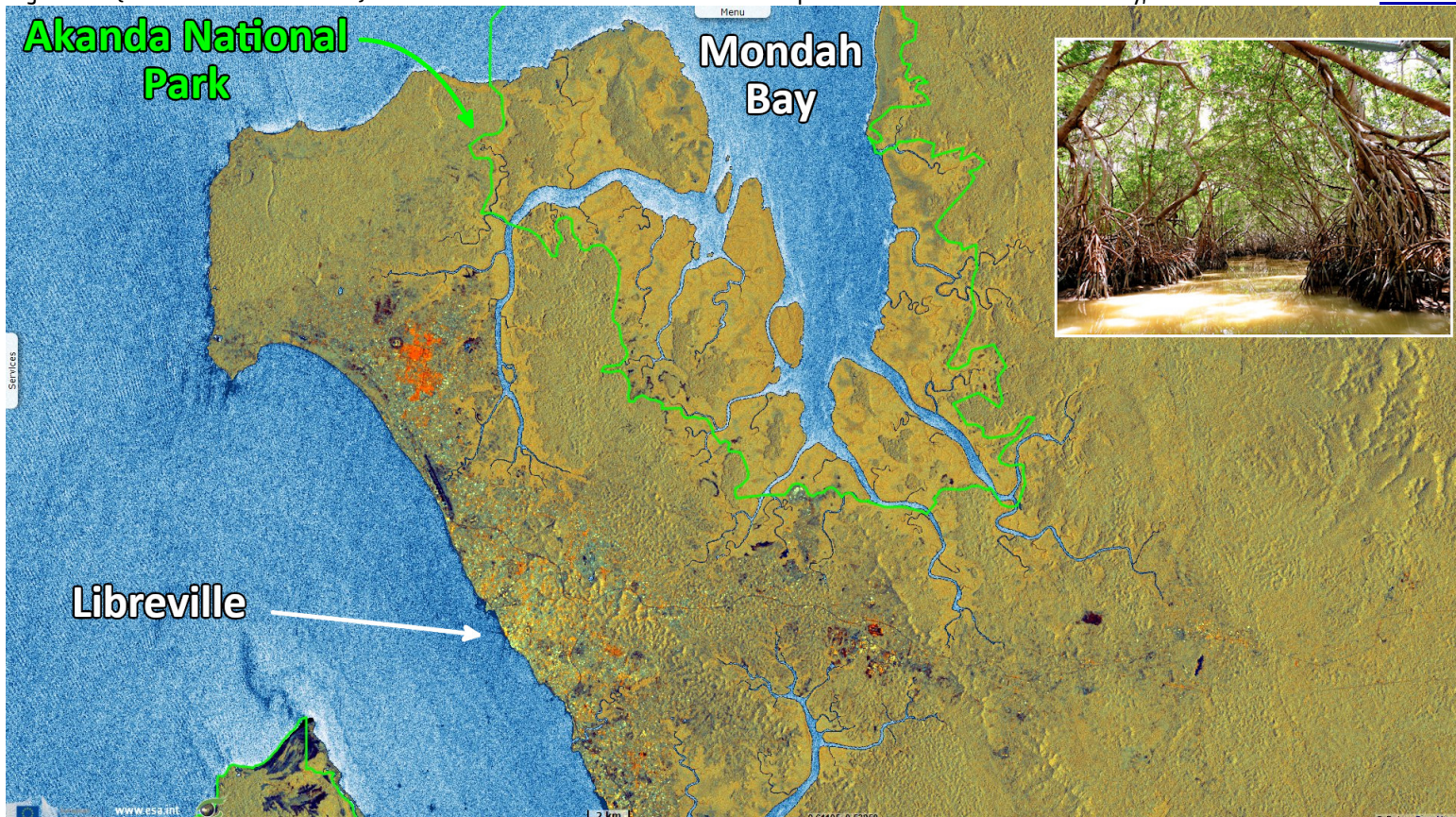


Fig. 3 - S1 (28.07.2021->31.08.2021) - Riverine network between the Komo and Remboué rivers, several types of land cover are visible. [2D view](#)



Fig. 4 - S2 (07.03.2021) - Pongara includes a wide range of mangroves and riverine, swampy, littoral & flooded forest types, grassy savannas. [2D view](#)



*The views expressed herein can in no way be taken to reflect the official opinion of the European Space Agency or the European Union.
Contains modified Copernicus Sentinel data 2022, processed by VisioTerra.*

More on European Commission space:							
More on ESA:				S-1 website	S-2 website	S-3 website	
More on Copernicus program:				SciHub portal	Cophub portal	Inthub portal	Colhub portal
More on VisioTerra:				Sentinel Vision Portal	Envisat+ERS portal	Swarm+GOCE portal	CryoSat portal