

# The wreck of Shackleton's Endurance found, Antarctica

Sentinel-1 CSAR EW acquired on 21 November 2015 from 20:25:23 to 23:43:24 UTC  
Sentinel-2 MSI acquired on 22 February 2018 at 12:06:41 UTC  
Sentinel-1 CSAR IW acquired on 25 February 2018 at 08:00:33 UTC  
Sentinel-1 CSAR IW acquired on 16 January 2021 at 07:08:36 UTC  
Sentinel-1 CSAR EW acquired on 11 March 2022 at 07:21:18 UTC

Author(s): Sentinel Vision team, VisioTerra, France - [svp@visioterra.fr](mailto:svp@visioterra.fr)

Keyword(s): Polar, cryosphere, sea ice, pack ice, ship security, Antarctic Ocean, United Kingdom

[2D Layerstack](#)

Fig. 1 - S1 (15->26.11.2015) - Sea ice in Wedell Sea exactly 100 years after the Endurance sank; the expedition's main events are shown. [2D view](#)

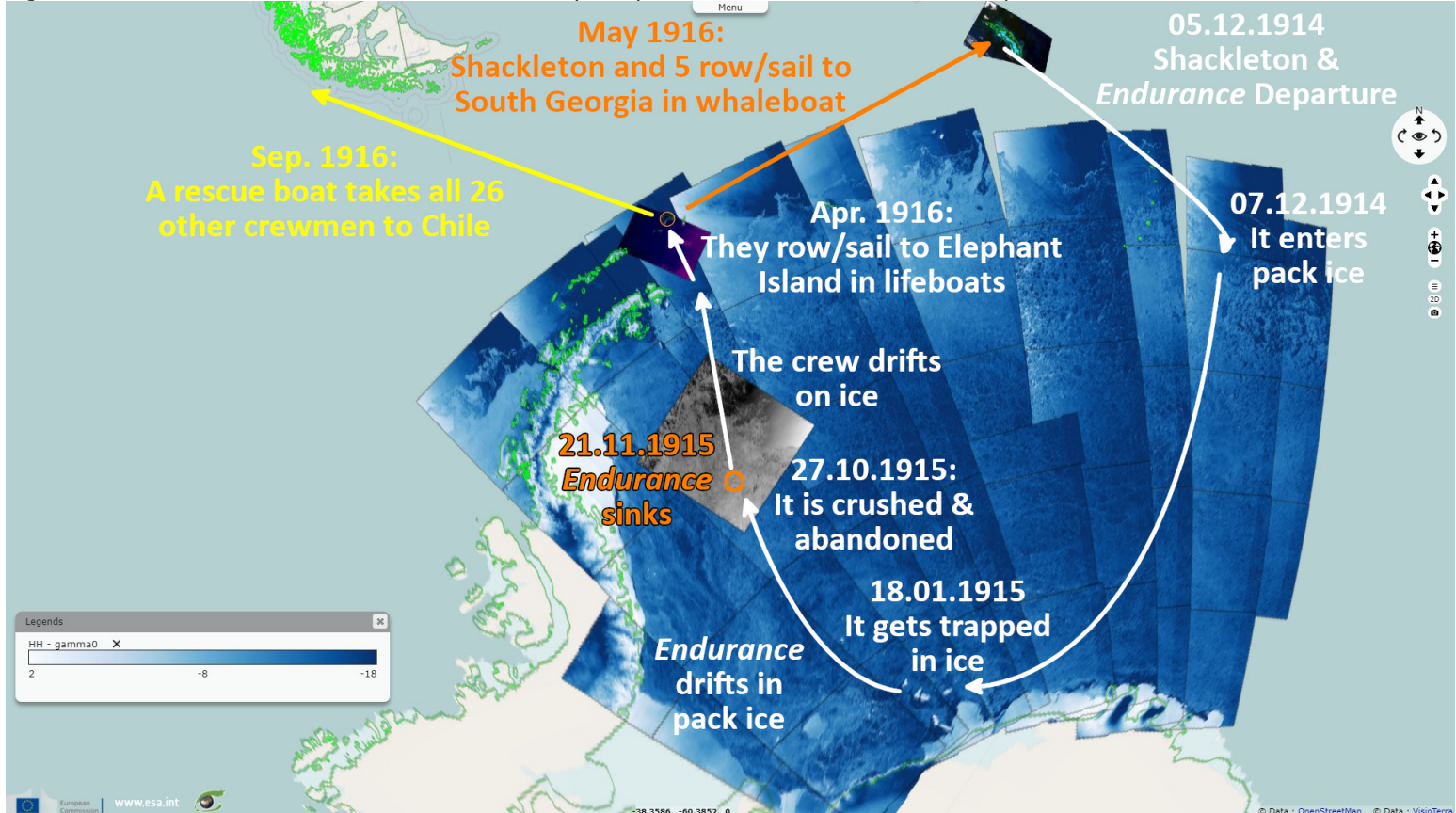
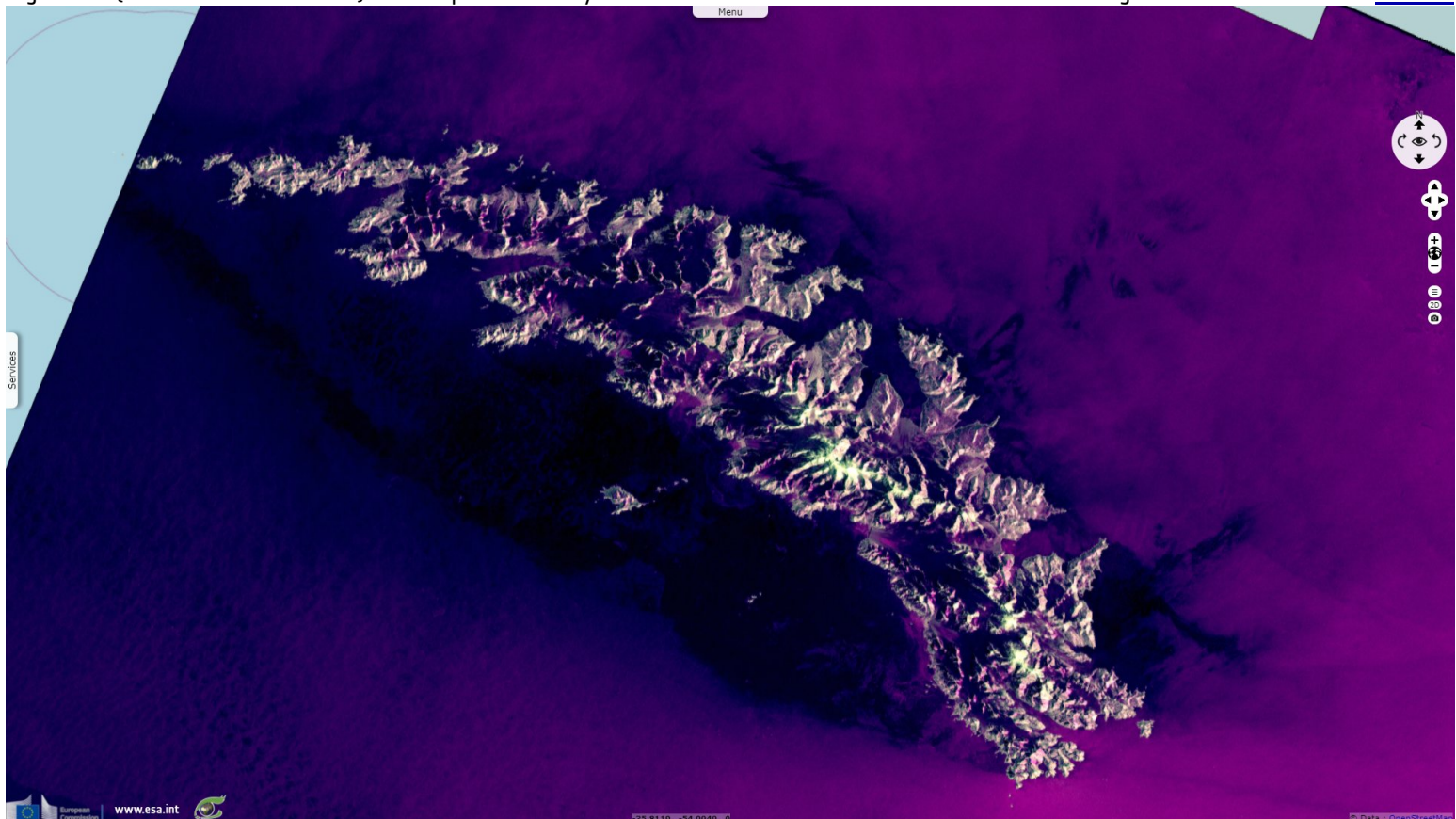


Fig. 2 - S1 (05.11.2020->16.01.2021) - The expedition led by Ernest Shackleton left the British island of South Georgia. [3D view](#)

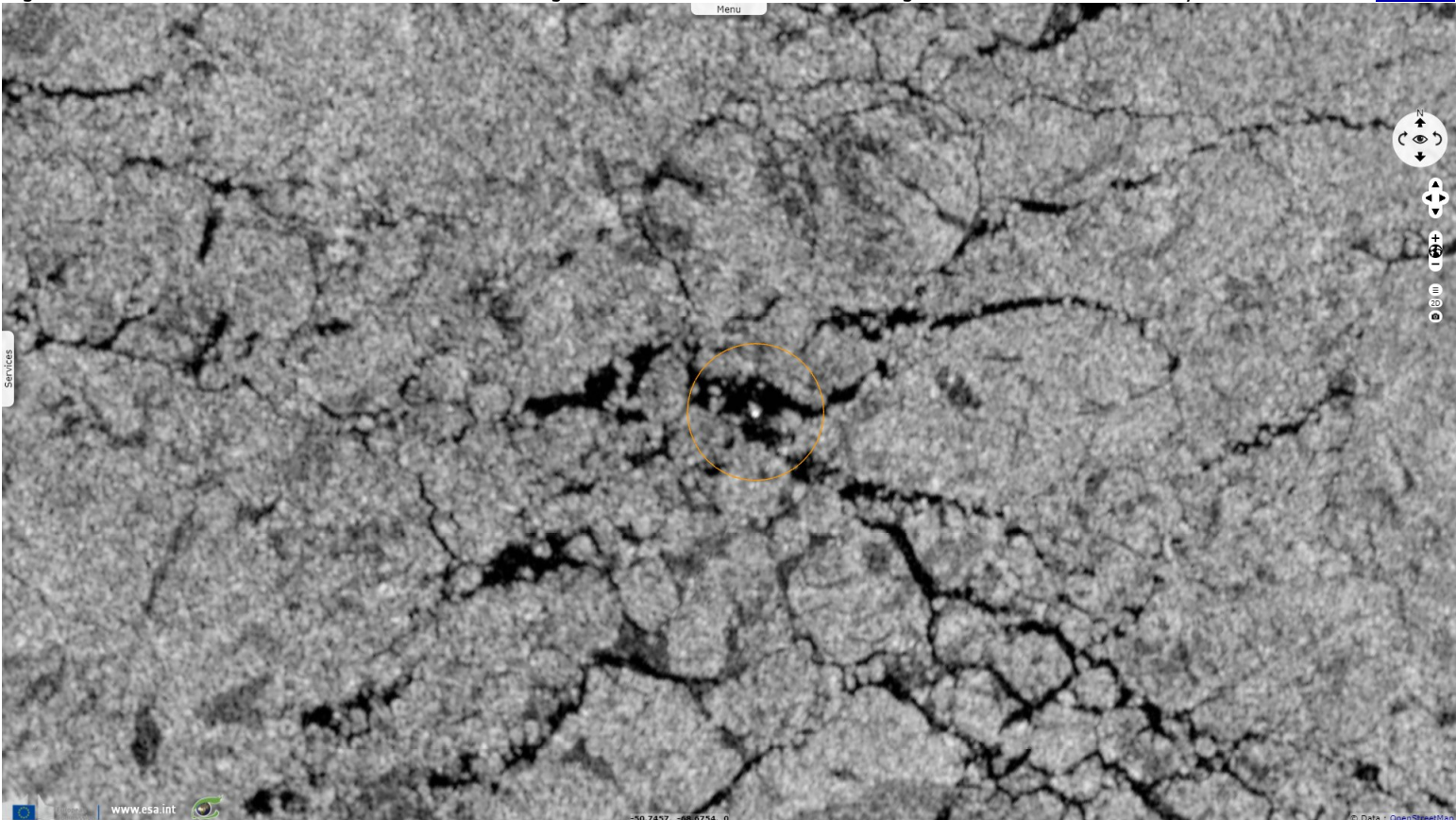




The expedition aimed to achieve the first crossing of Antarctica from the Weddell Sea via the South Pole to the Ross Sea.

Fig. 3 - S1 (11.03.2022) - The South African icebreaker Agulhas II found the Endurance sitting in 3000m of water for 107 years.

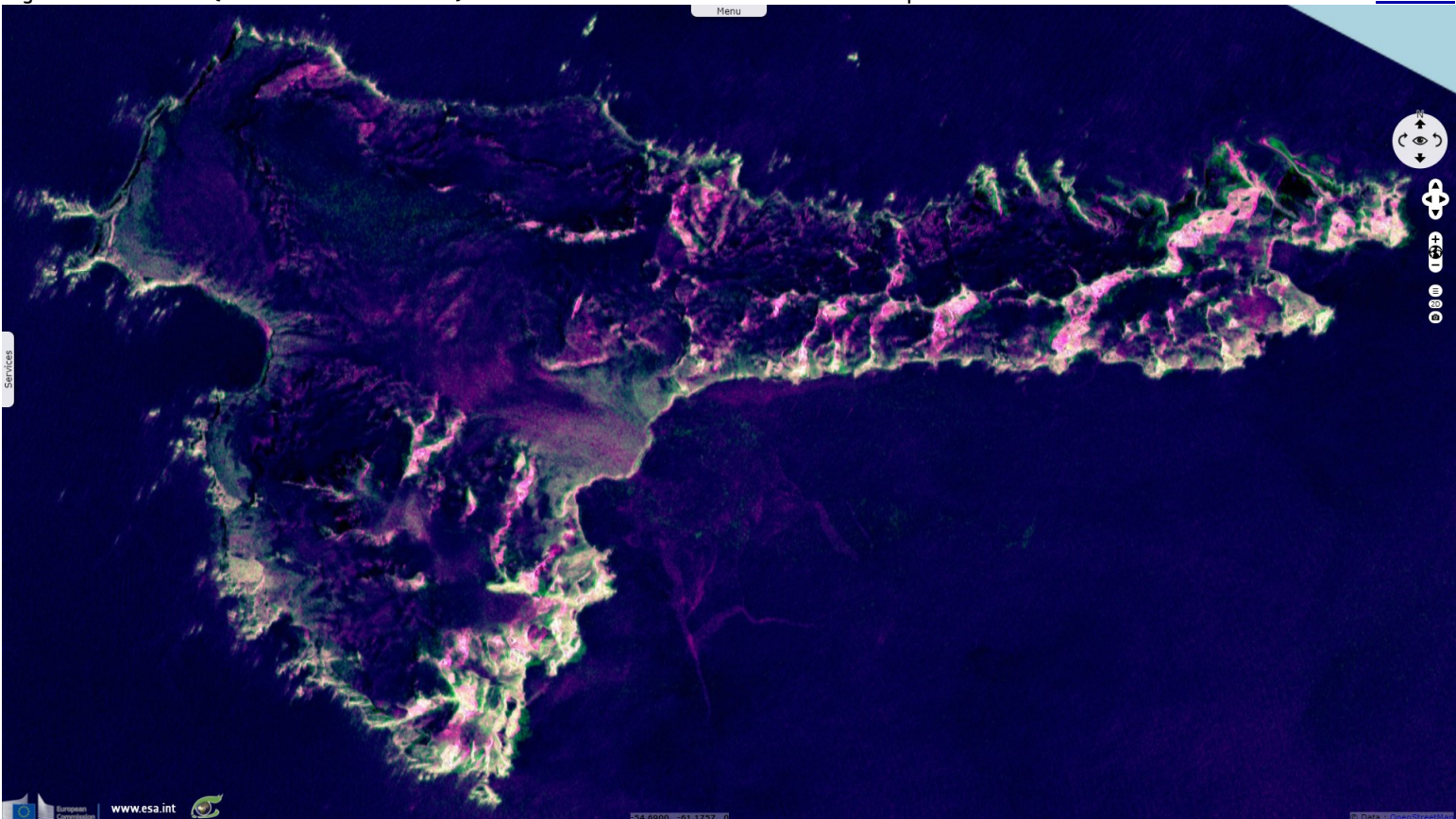
[3D view](#)



Endurance became stuck in the dense pack ice in January 1915. The expedition members remained living aboard the ship for several months until 27 October 1915 when Shackleton took the decision to abandon it. The ship was crushed by sea-ice and sank on 21 November 1915.

Fig. 4 - S1 IW+EW - (2018.02.01->2018.03.01) - The crew trekked on sea ice & rowed to Elephant Island where most remained 3 months.

[3D view](#)



Shackleton and his men to make an astonishing escape on foot and in small boats. They trekked to the edge of the sea ice, then sailed in the salvaged ship's lifeboats to Elephant Island where there were seals and penguins to eat and a sheltered bay in which to camp under the upturned lifeboats.















Fig. 5 - S2 (22.02.2018) - For one month, Shackleton and 5 men sailed to South Georgia to call for rescue for the crew left behind. [3D view](#)



Shackleton and Worsley led a small party in one of the open boats to South Georgia, where there was a whaling station. On 30 August 1916, the fourth attempt to reach the stranded expedition members at Elephant island was a success, and the expedition party was taken to safety by the Chilean tug 'Yelcho'. All 28 crew survived the failed expedition, now remembered in history as one of the most epic feats of endurance in the heroic age of Antarctic exploration.

*The views expressed herein can in no way be taken to reflect the official opinion of the European Space Agency or the European Union.  
Contains modified Copernicus Sentinel data 2022, processed by VisioTerra.*

More on European Commission space:							
More on ESA:				<a href="#">S-1 website</a>	<a href="#">S-2 website</a>	<a href="#">S-3 website</a>	
More on Copernicus program:				<a href="#">SciHub portal</a>	<a href="#">Cophub portal</a>	<a href="#">Inthub portal</a>	<a href="#">Colhub portal</a>
More on VisioTerra:				<a href="#">Sentinel Vision Portal</a>	<a href="#">Envisat+ERS portal</a>	<a href="#">Swarm+GOCE portal</a>	<a href="#">CryoSat portal</a>