

Icy island viewed by OLCI

Sentinel-3 OLCI FR acquired on **25 April 2016** at 11:40:20 UTC
Sentinel-3 OLCI FR acquired on **03 March 2017** at 11:51:36 UTC
Sentinel-3 OLCI FR acquired on **26 July 2017** at 12:32:44 UTC
Sentinel-3 OLCI FR acquired on **16 October 2017** at 12:06:33 UTC

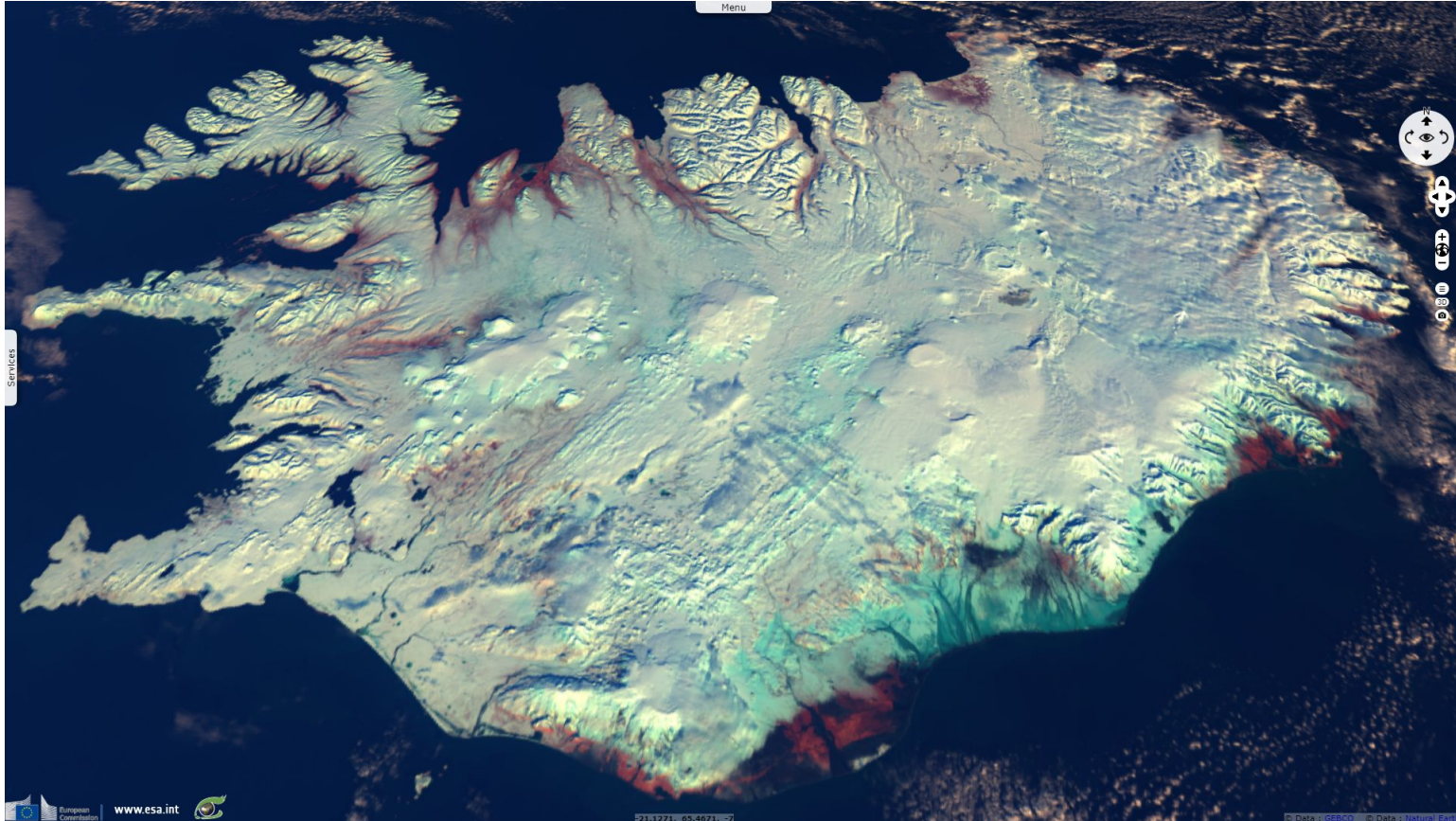
Author(s): Sentinel Vision team, VisioTerra, France - svp@visioterra.fr

Keyword(s): Island, polar, coastal, cryosphere, ice cap, snow, glacier, seasons, water colour, plankton bloom, Iceland



[3D Layerstack](#)

Fig. 1 - S3 OLCI (03.03.2017) - 21,6,1 colour composite - Iceland almost entirely covered in ice & snow as winter closed. [3D animation](#) [2D animation](#)



Located on the North Atlantic ridge, Iceland polar climate makes it home to the most voluminous ice cap in Europe, the Vatnajökull.

Fig. 2 - 25.04.2016 - Late April, the snow has melt in plains. The composite reveals nuances the eye can hardly catch. [3D animation](#) [2D animation](#)

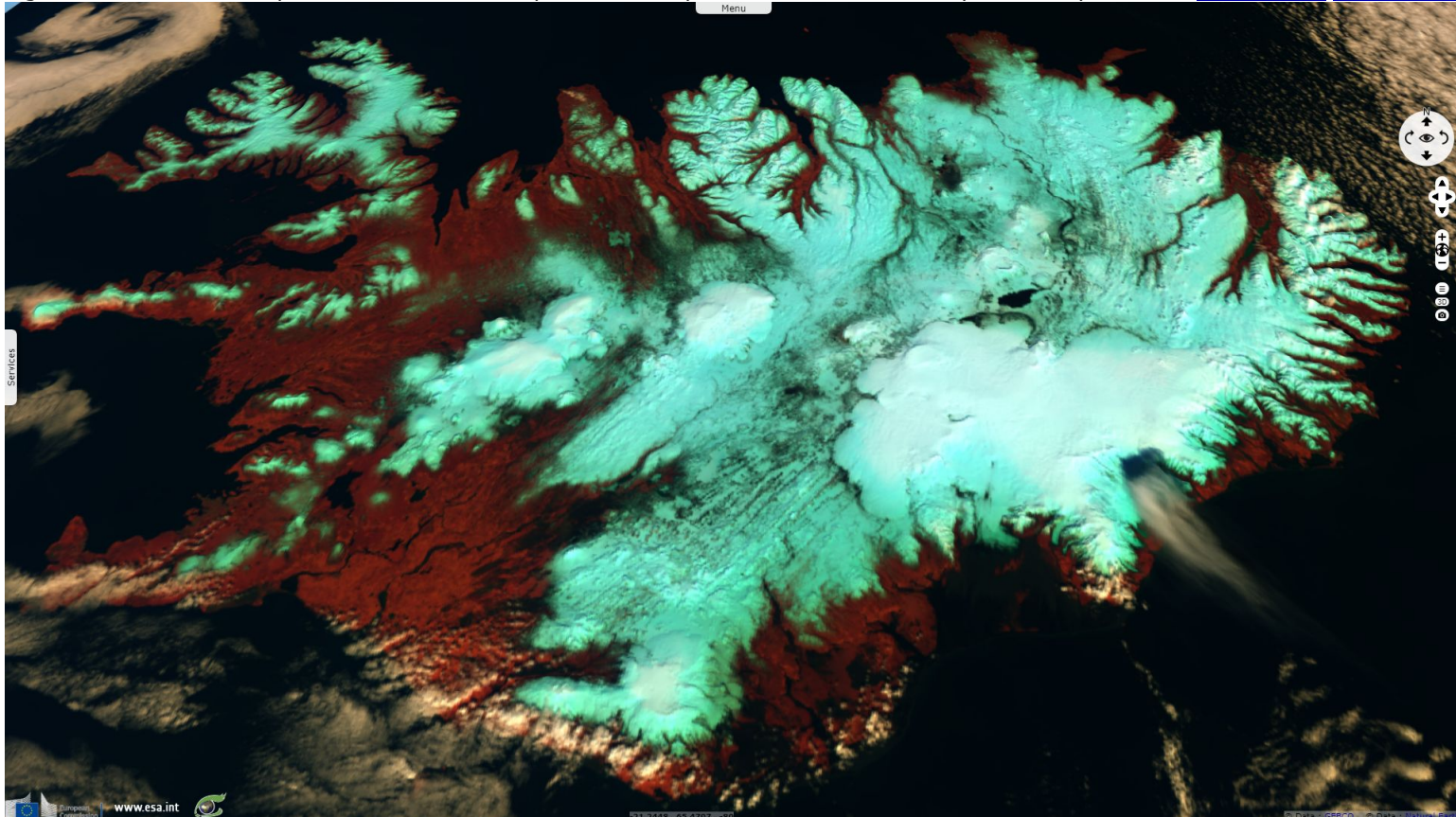


Fig. 3 - 26.07.2017 - 10.6.3 composite - Glaciers recess to their min in summer; blooms show downstream of snow melts [3D animation](#) [2D animation](#)

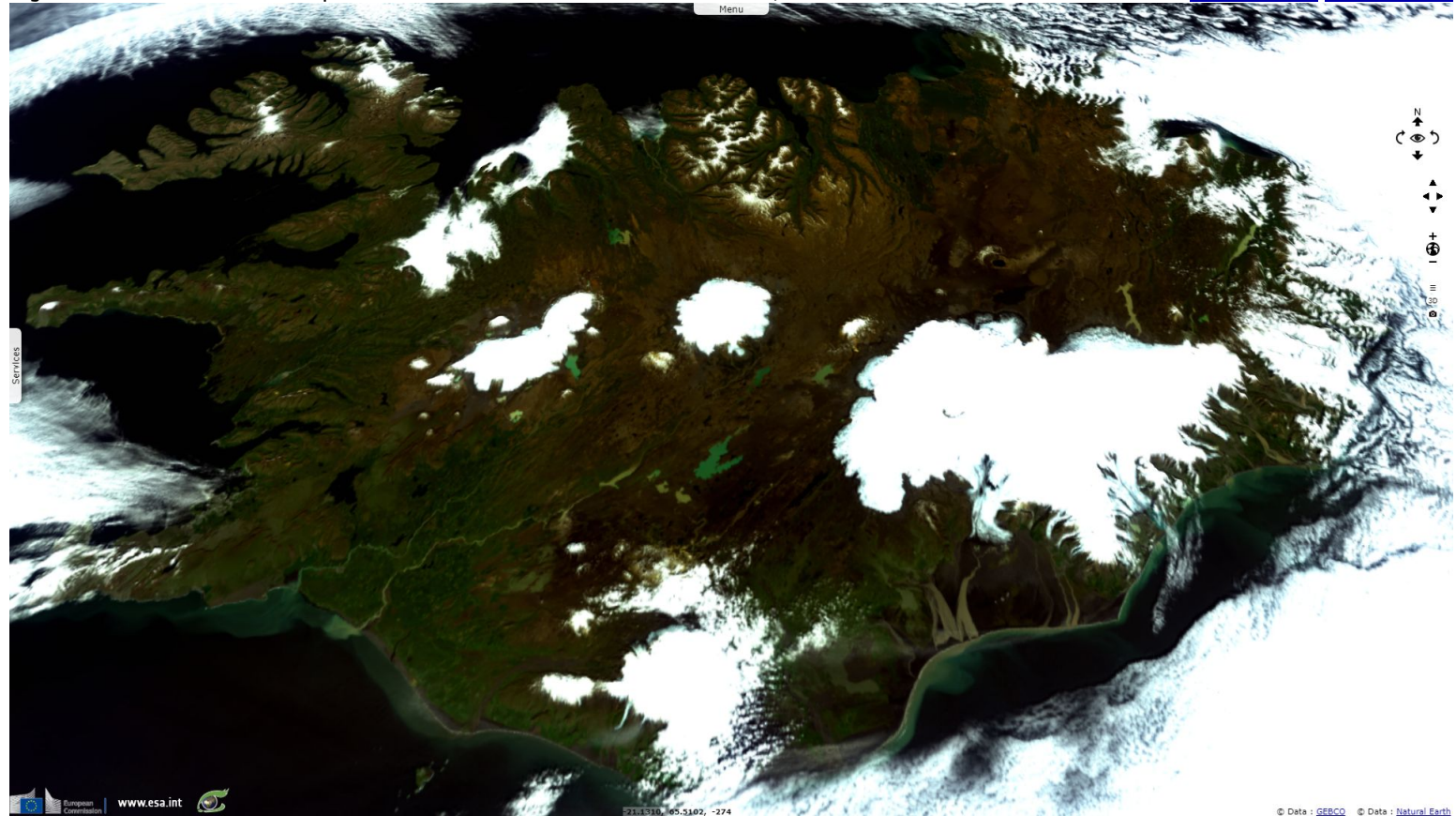
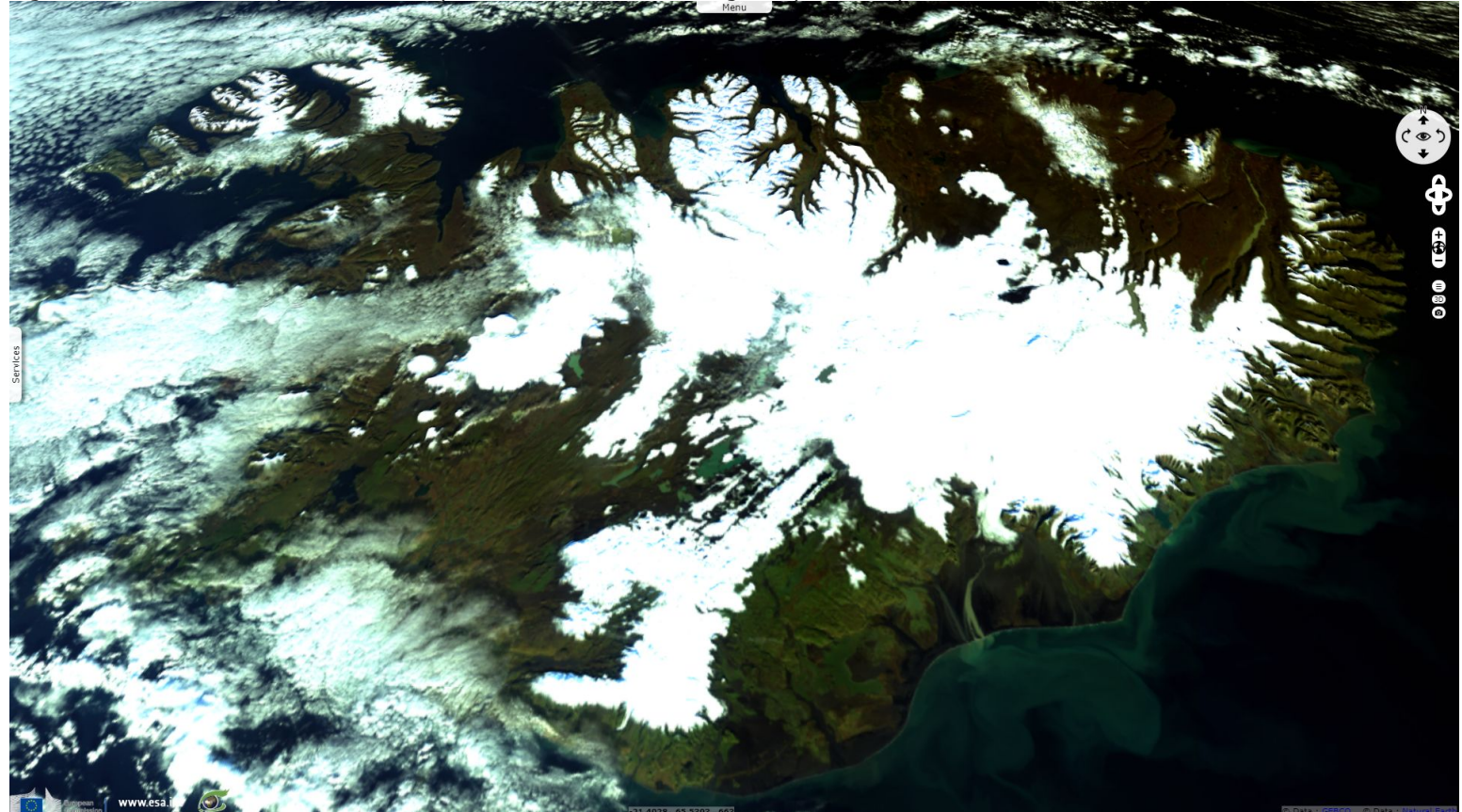


Fig. 4 - 2017.10.16 - Ice caps are bolstered by the return of autumn, closing the cycle as they will soon recover most land. [3D animation](#) [2D animation](#)



The views expressed herein can in no way be taken to reflect the official opinion of the European Space Agency or the European Union.

More on European Commission space:						
More on ESA:				S-1 website	S-2 website	S-3 website
More on Copernicus program:				SciHub portal	Cophub portal	Inthub portal Colhub portal
More on VisioTerra:				Sentinel Vision Portal	Envisat+ERS portal	Swarm+GOCE portal CryoSat portal Proba-V portal