

Mount Aconcagua, summit of the Americas, Argentina

Sentinel-2 MSI acquired on 29 January 2017 at 14:37:51 UTC

Sentinel-2 MSI acquired on 04 April 2018 at 14:37:51 UTC

Sentinel-1 CSAR IW acquired on 26 November 2019 at 09:55:46 UTC

Sentinel-1 CSAR IW acquired on 26 November 2019 at 09:56:11 UTC

Author(s): Sentinel Vision team, VisioTerra, France - svp@visioterra.fr

Keyword(s): Mountain range, Pacific Ring of Fire, subduction, glacier, cryosphere, Argentina, Chile

[2D Layerstack](#)

Fig. 1 - S2 (29.01.2017) - Mount Aconcagua lies in Argentina, north-west 110km of Santiago, Chile's capital city, and 135km west of the Southern Pacific Ocean.

[2D view](#)

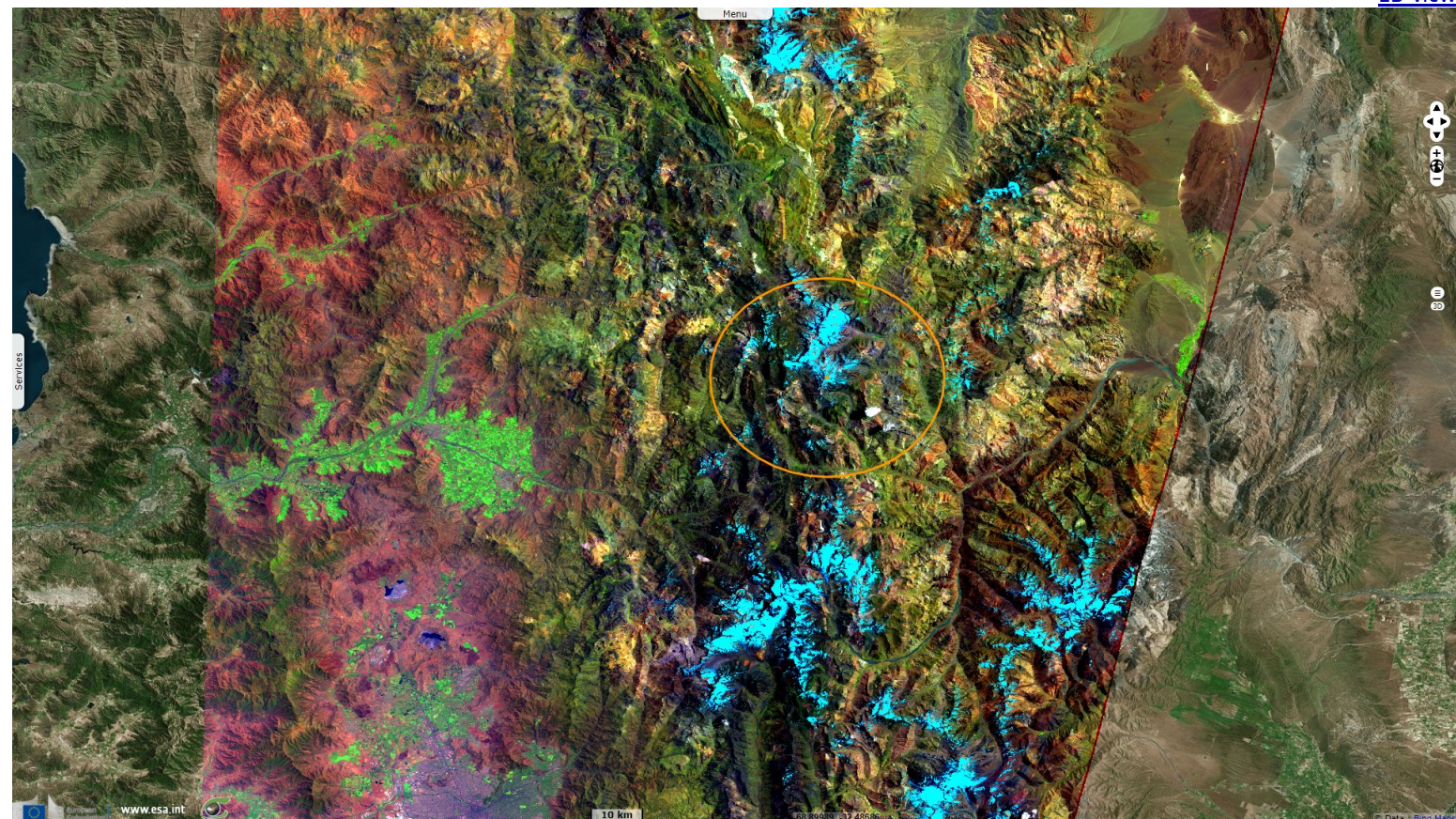


Fig. 2 - S1 (26.11.2019) - It is located 15 km from the border with Chile but lies on the Argentinian side within the Atlantic-leading Colorado River watershed.

[2D view](#)

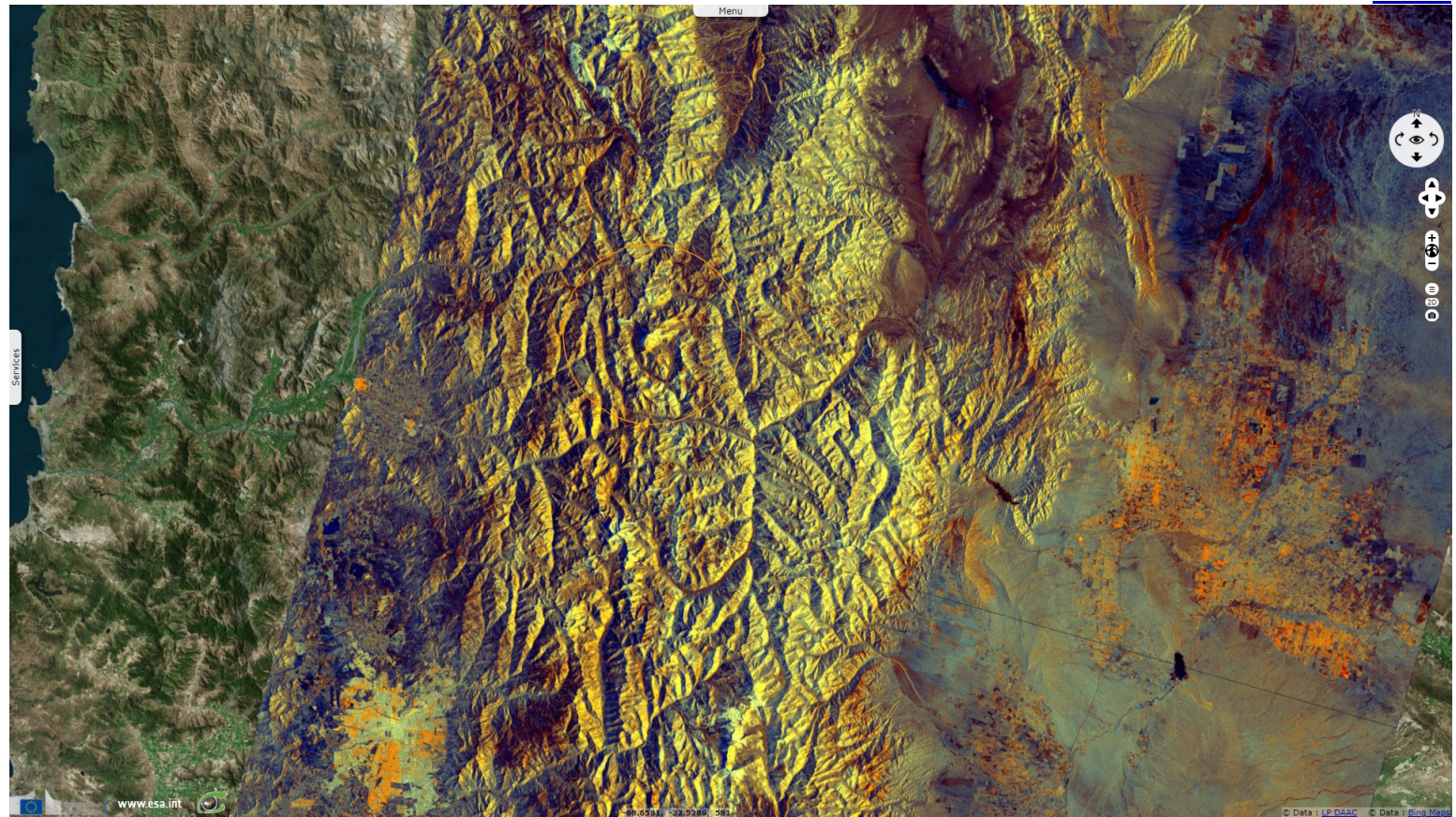


Fig. 3 - S2 (29.01.2017) - Aconcagua used to be an active stratovolcano, it was created by the subduction of the Nazca Plate beneath the South American Plate.

[2D view](#)

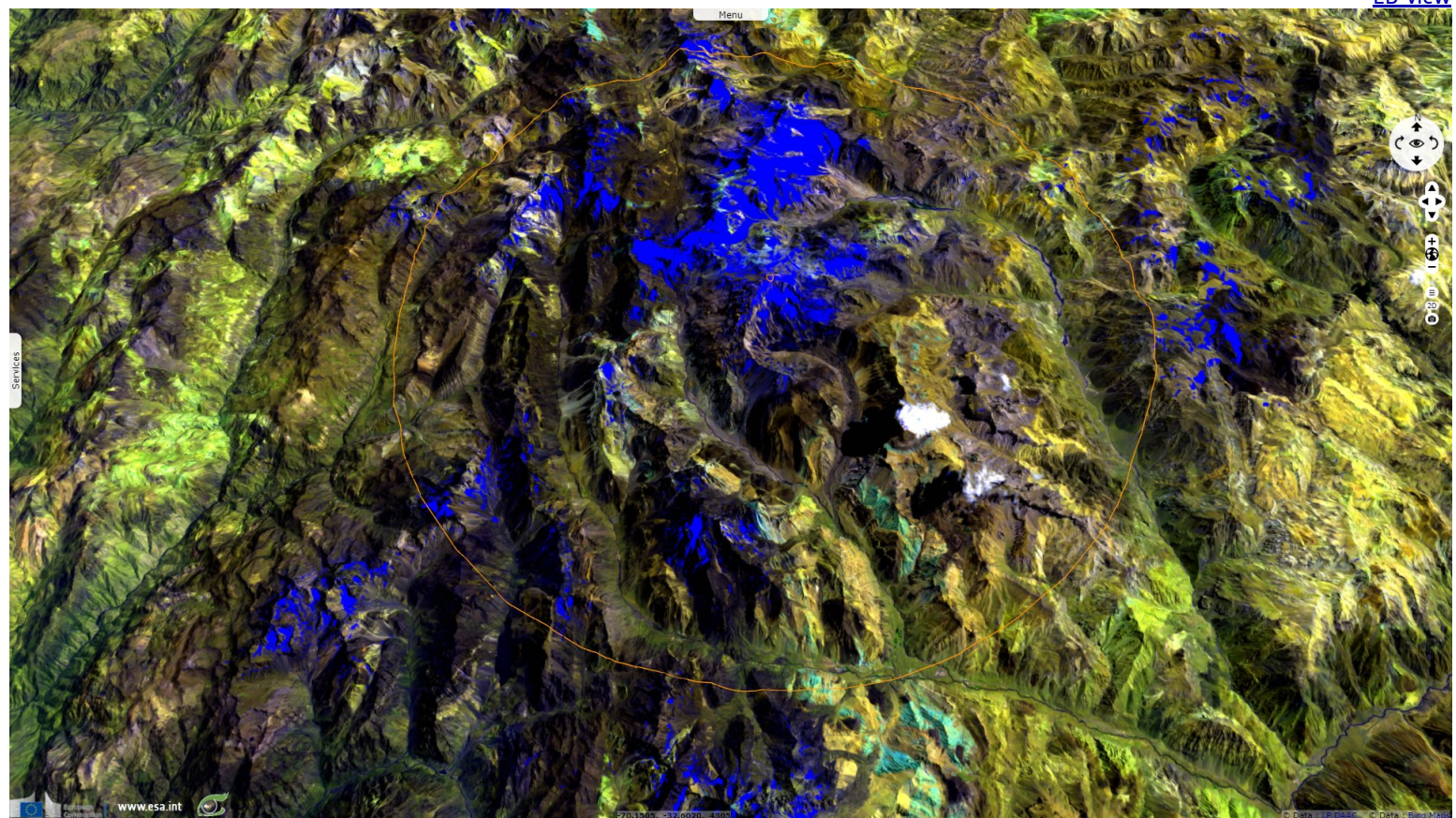
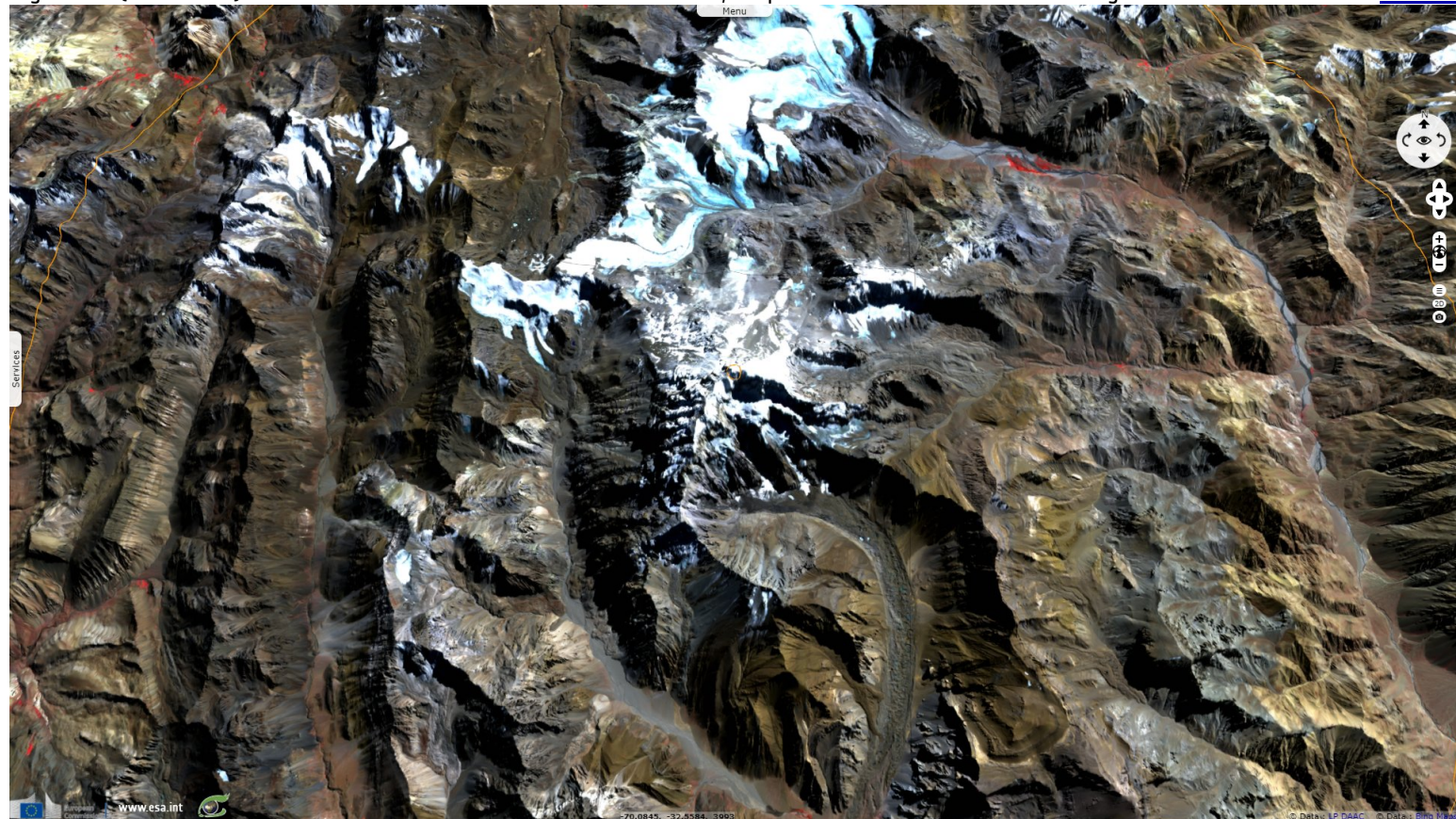


Fig. 4 - S2 (04.04.2018) - The climate is arid and the snow cover tenuous, despite the existence of some modest glaciers.

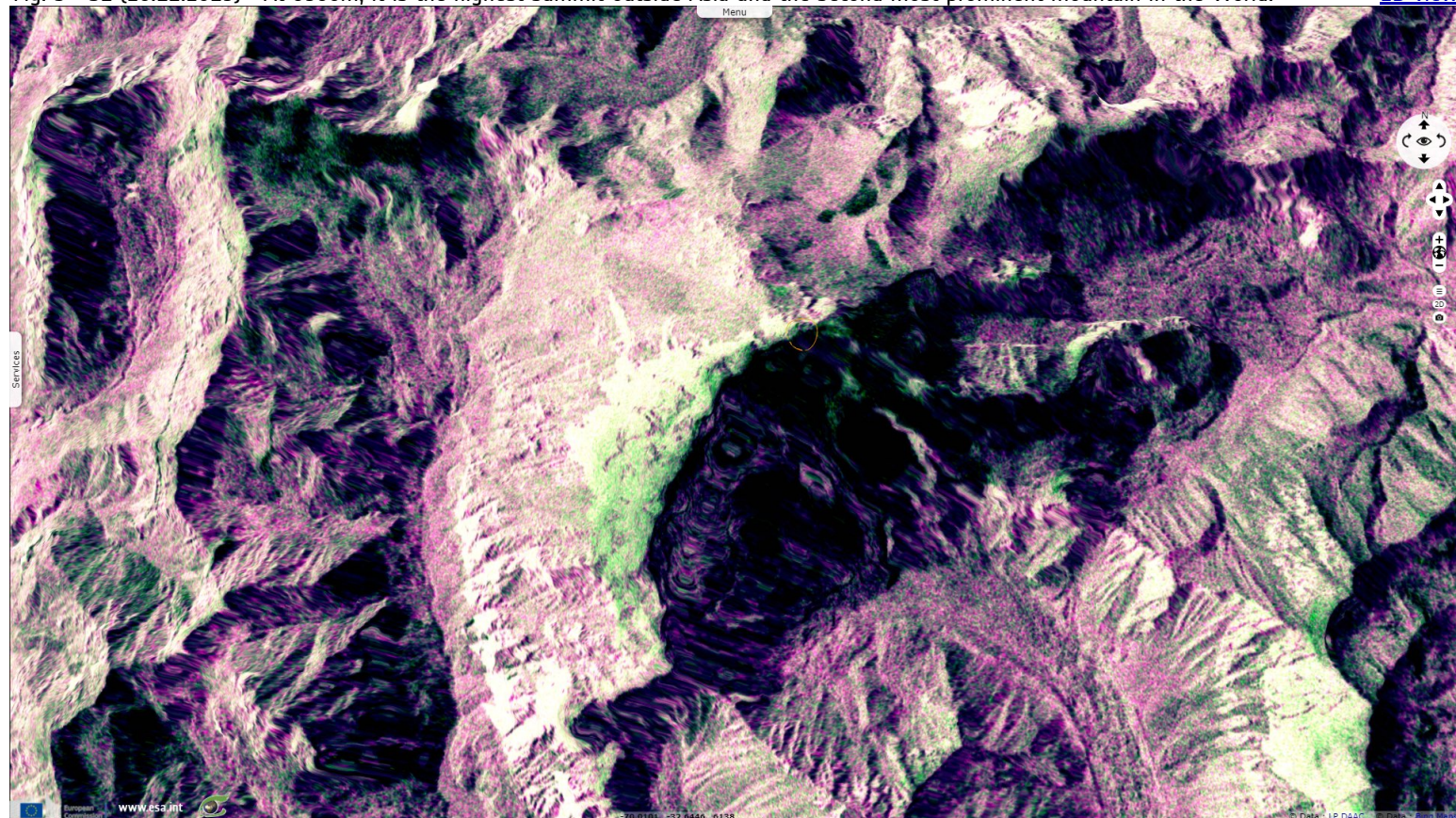
[2D view](#)



It overlooks a vast provincial park protecting animal species typical of the cordillera, especially the Andean condor and the guanaco, as well as rare and fragile vegetation.

Fig. 5 - S1 (26.11.2019) - At 6960m, it is the highest summit outside Asia and the second most prominent mountain in the World.

[2D view](#)



*The views expressed herein can in no way be taken to reflect the official opinion of the European Space Agency or the European Union.
Contains modified Copernicus Sentinel data 2021, processed by VisioTerra.*

More on European Commission space:						
More on ESA:				S-1 website	S-2 website	S-3 website
More on Copernicus program:				SciHub portal	Cophub portal	Inthub portal
More on VisioTerra:				Sentinel Vision Portal	Envisat+ERS portal	Swarm+GOCE portal
					CryoSat portal	

