

California fires

Sentinel-2 MSI acquired on 22, 27 and 30 October 2019

Sentinel-3 OLCI FR acquired on 27 October 2019 at 18:08:52 UTC

Sentinel-5P TROPOMI CO acquired from 15 to 30 October 2019

Author(s): Sentinel Vision team, VisioTerra, France - syp@visioterra.fr

Keyword(s): California, Fire, USA

[2D Layerstack](#)

Fig. 1 - S2 (27.10.2019) - 12,11,4 colour composite - Fire fronts in California.

[2D view](#) [3D view](#)

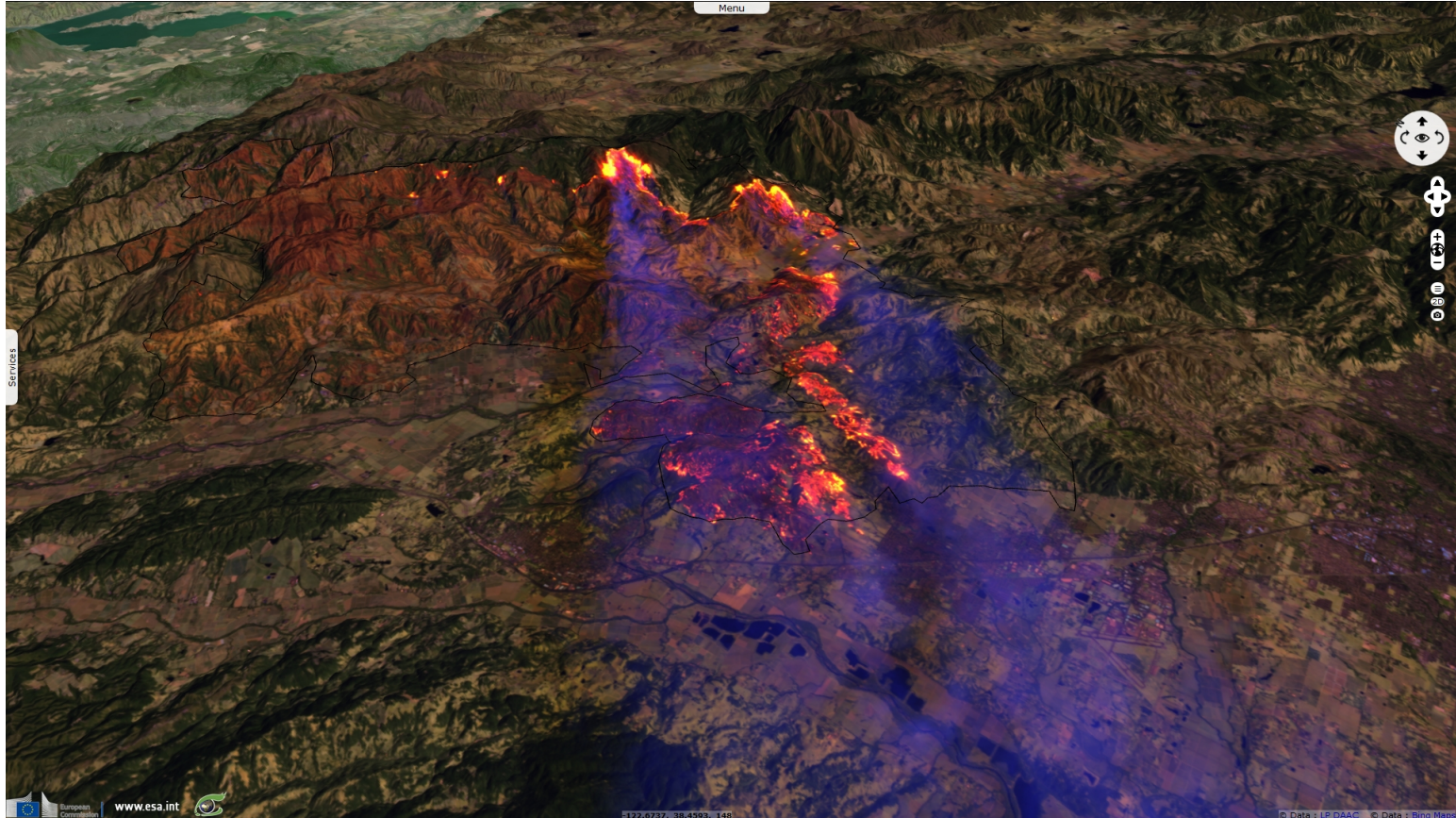


Fig. 2 - S2 (22.10.2019) - 11,8,2 colour composite - View before fire.

[2D view](#) [3D view](#) [2D animation](#)

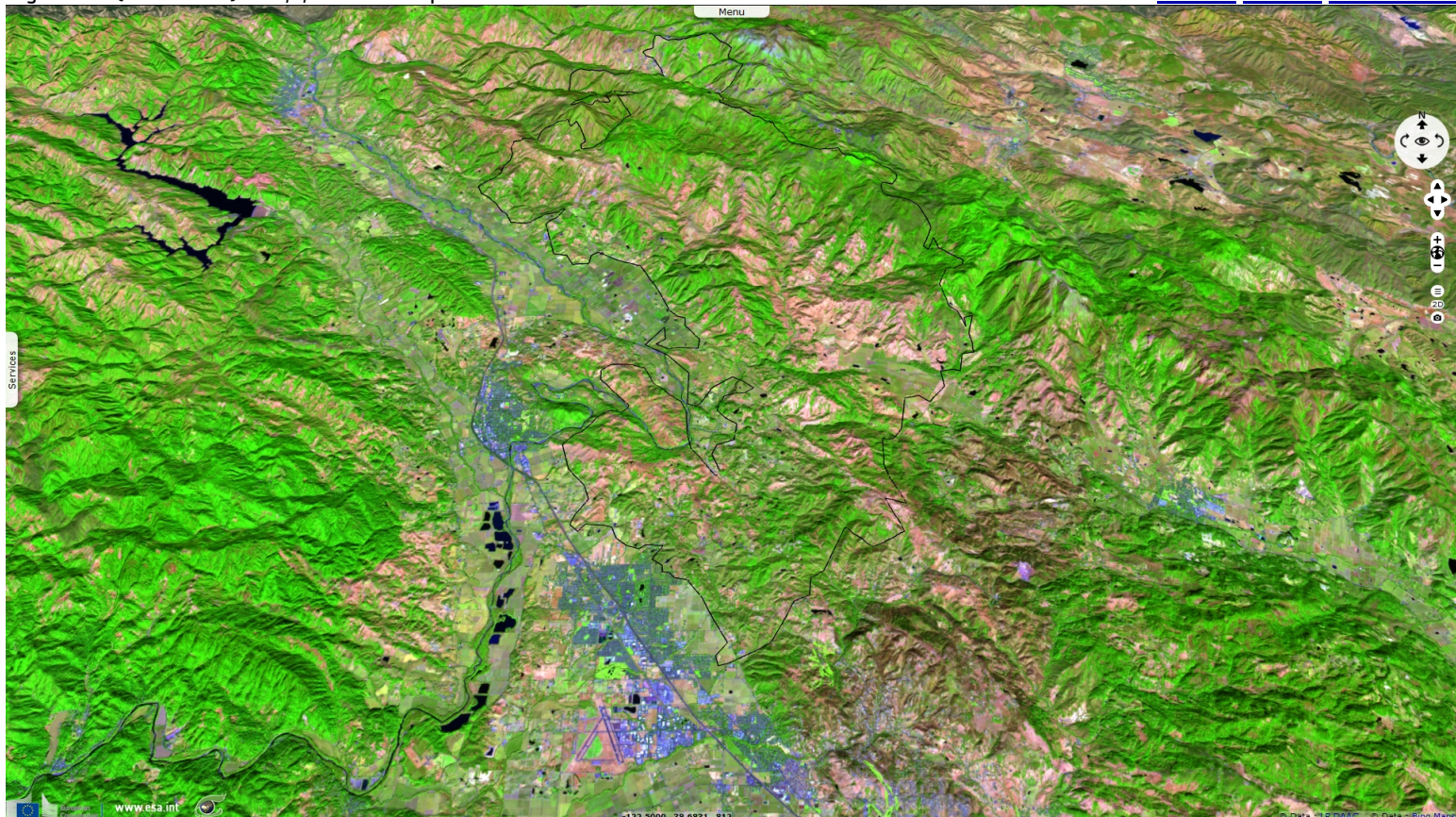


Fig. 3 - S2 (27.10.2019) - 11,8,2 colour composite - View during fire.

[2D view](#) [3D view](#)

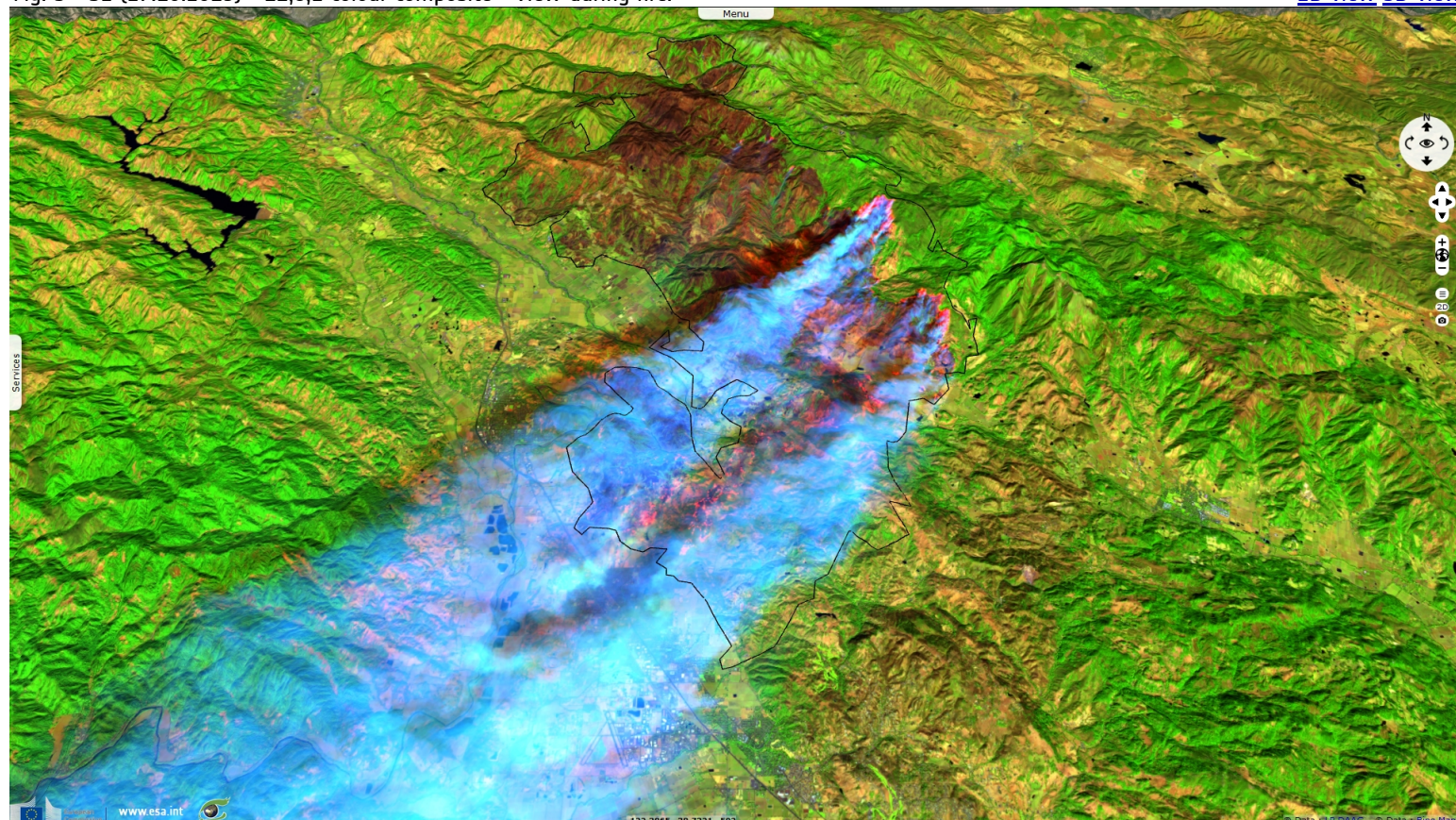
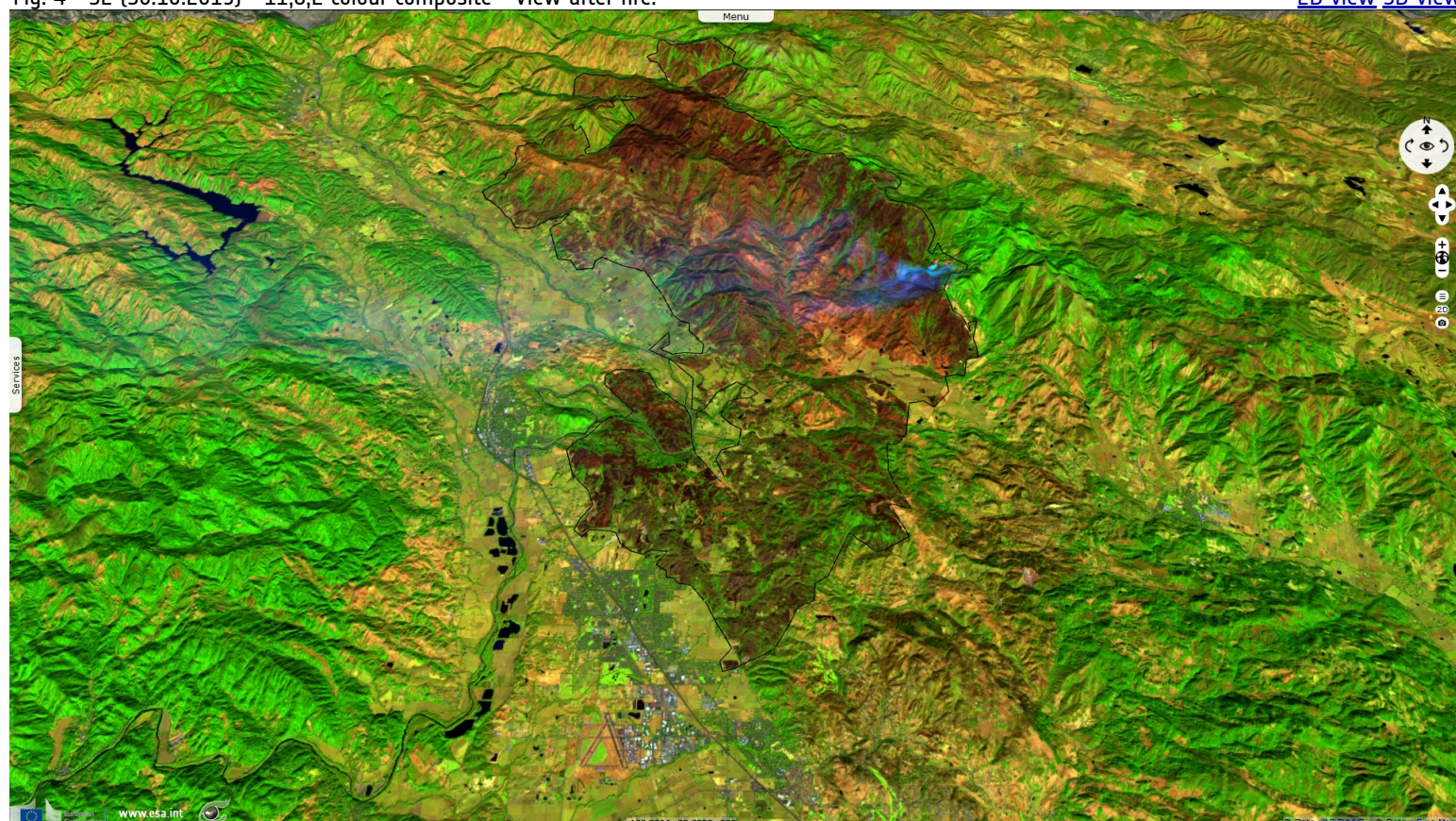


Fig. 4 - S2 (30.10.2019) - 11,8,2 colour composite - View after fire.

[2D view](#) [3D view](#)



"The California wildfires that scorched thousands of acres and prompted mass evacuations across the state in recent weeks are largely under control, but experts warn that hot and dry conditions will continue to elevate fire risk throughout the week. The Maria fire, which broke out atop South Mountain just south of Santa Paula in Ventura County on Thursday night and spread to nearly 10,000 acres, was 70% contained as of Sunday evening, according to the Ventura County Fire Department. All mandatory evacuation orders were lifted Saturday. Crews continued to work on containment lines over the weekend and paid especially close attention to the county's avocado and citrus orchards threatened by the flames. Two structures were burned, but no injuries were reported". (Source : [Los Angeles Times, 3 November 2019](#)).

Cause of fire

"The cause of the fire is unknown. But Southern California Edison told regulators Friday that it had reenergized a 16,000-volt power line 13 minutes before the fire broke out. Edison had earlier turned off the line due to heavy winds. In a statement, Edison spokesman Ron Gales said Saturday that "while they have no information about the cause of the fire, the line on South Mountain was near the area of the reported location of the fire " (Source : [Los Angeles Times, 3 November 2019](#)).

Fig. 5 - S2 (30.10.2019 - 22.10.2019) - Difference of the Normalised Difference Index (11,12) - View of the burnt area.

[2D view](#)

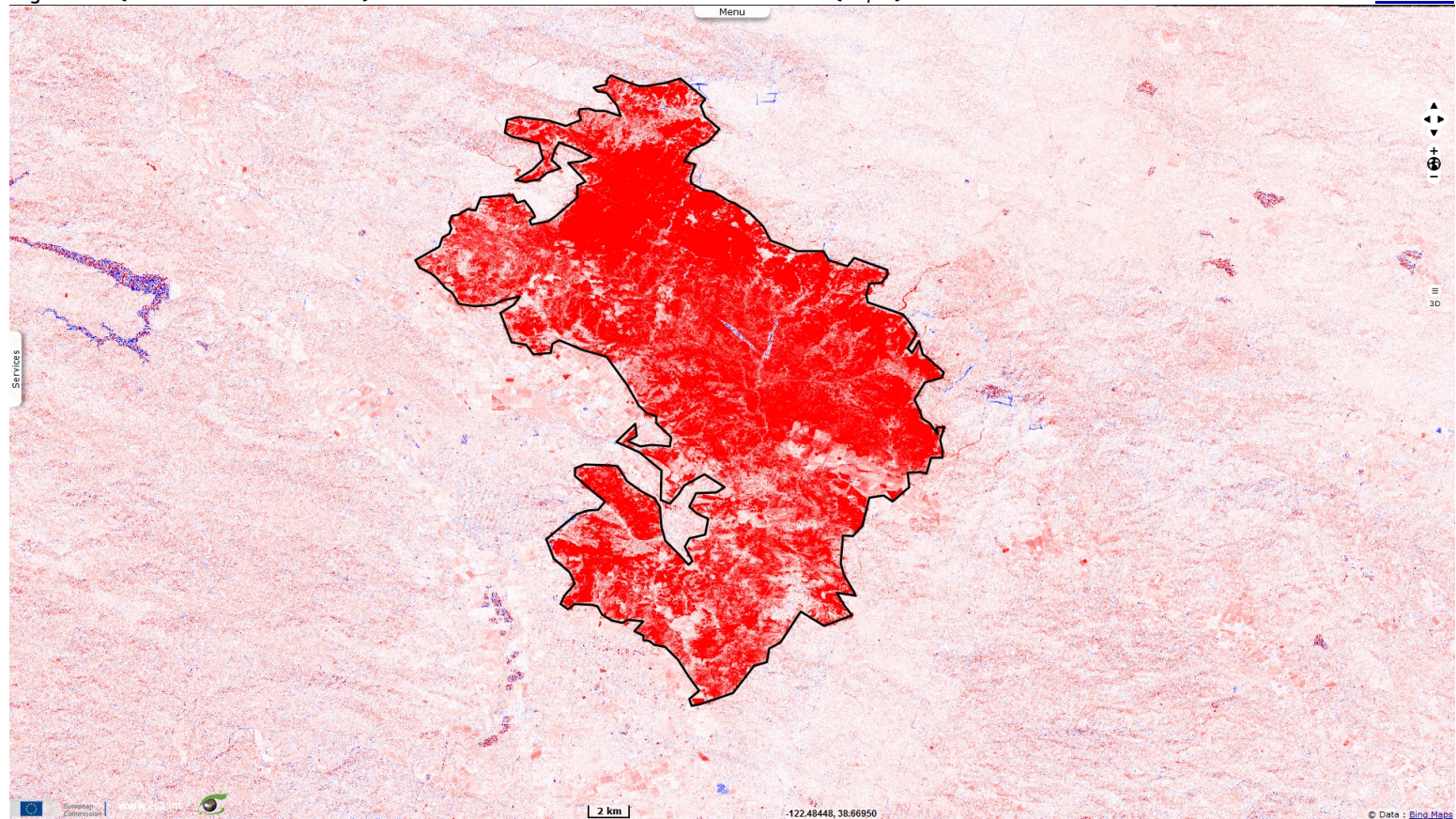
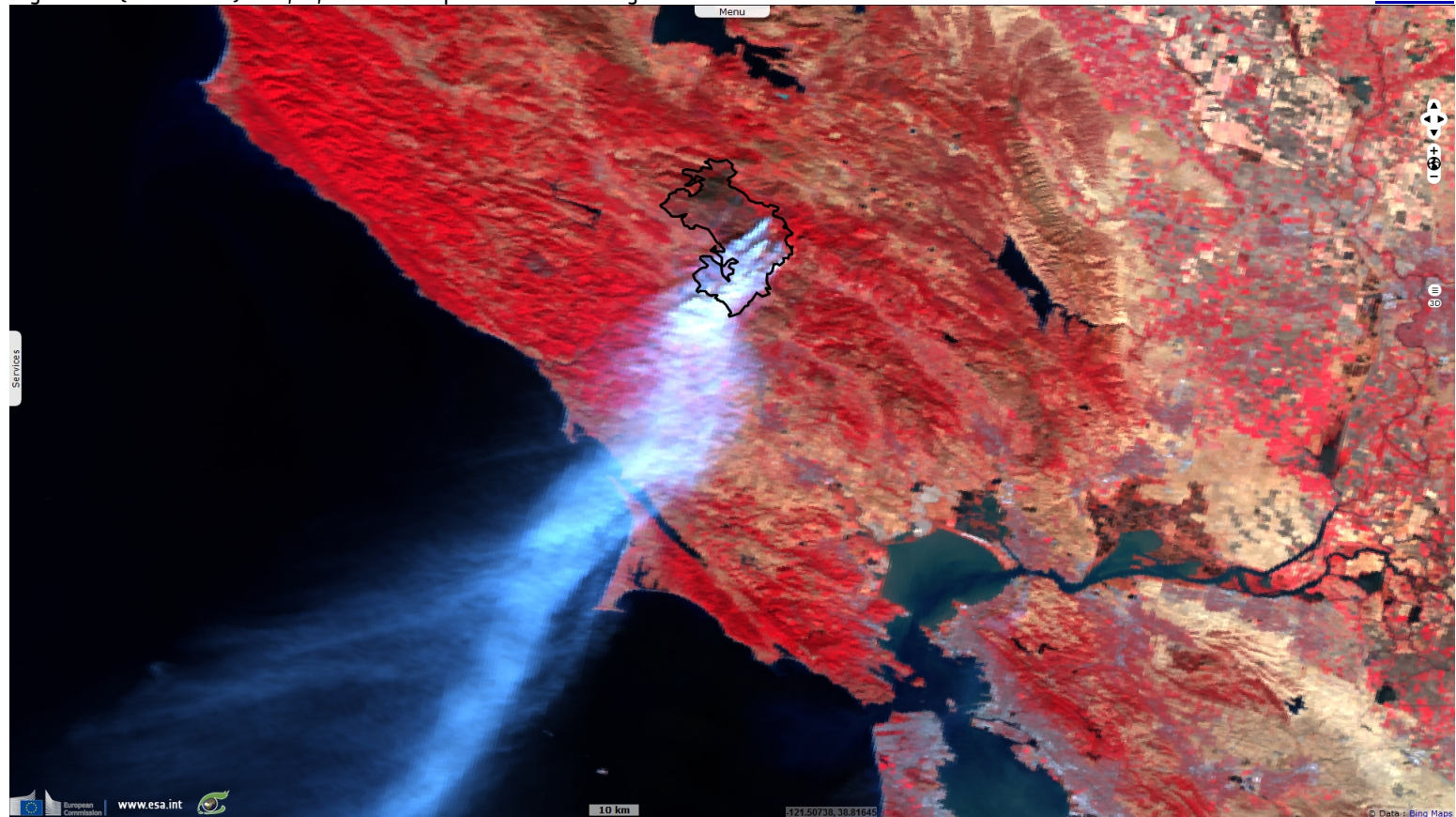


Fig. 6 - S3 (27.10.2019) - 18,10,3 colour composite - View during fire.

[2D view](#)



Firefighters battle the Maria Fire in California's Ventura County, which authorities said late Friday was 70% contained - Source: [NPR](#).

Fig. 7 - S5P TROPOMI Carbon Monoxide (CO) - Mean of 10 images acquired on October 2019 (15.10.2019 to 23.10.2019). [2D view](#) [2D animation](#)

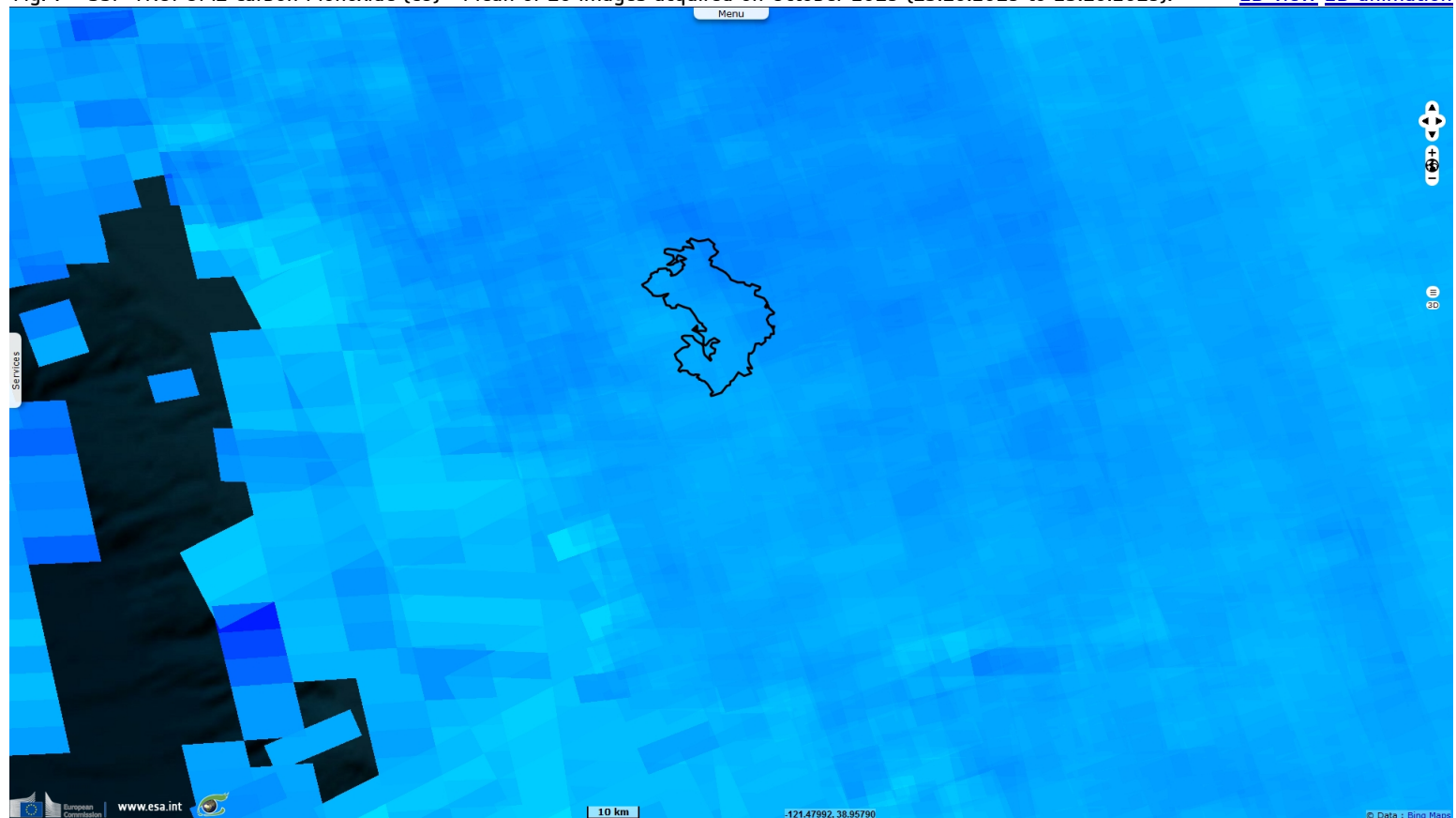
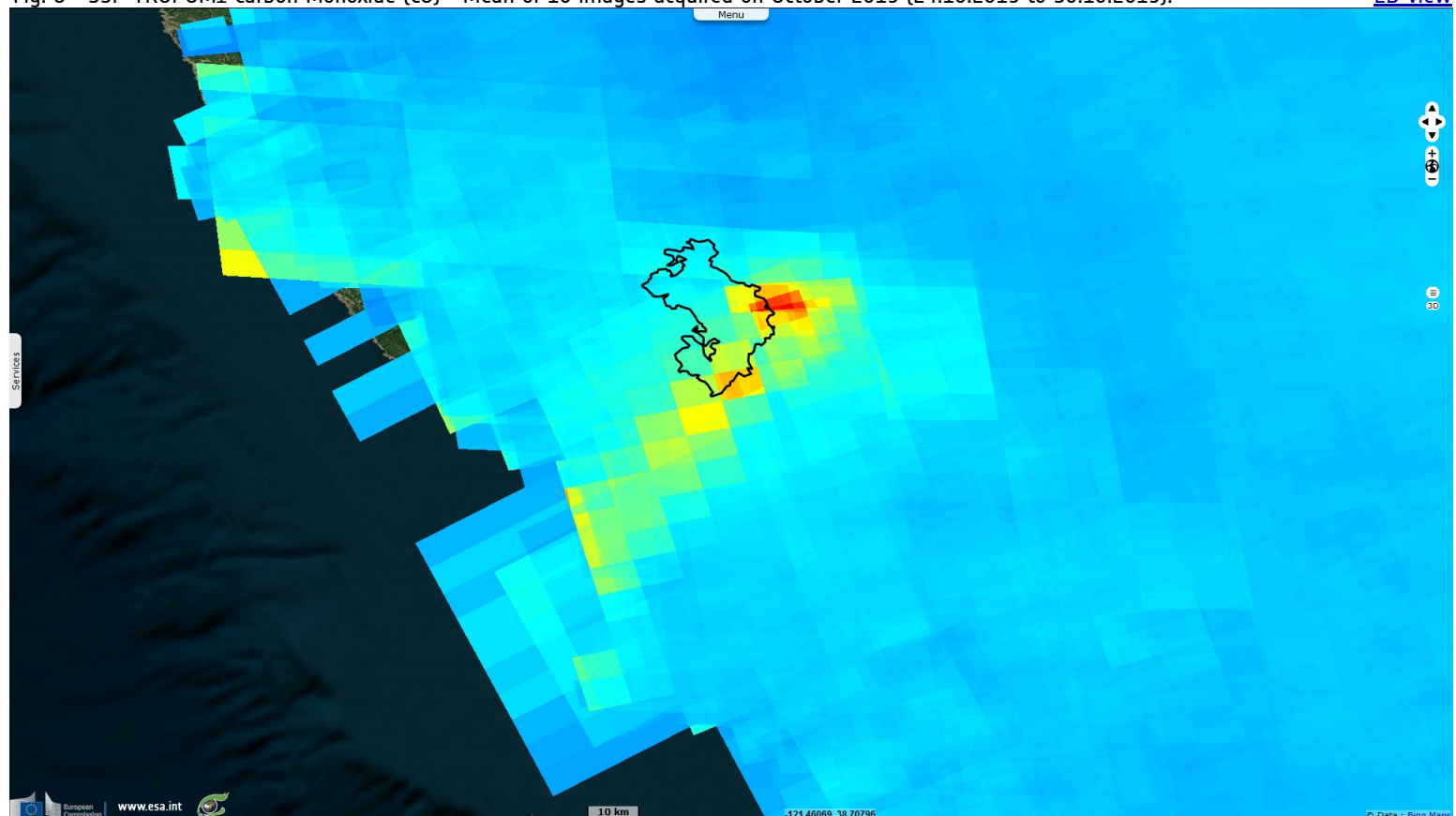


Fig. 8 - S5P TROPOMI Carbon Monoxide (CO) - Mean of 10 images acquired on October 2019 (24.10.2019 to 30.10.2019). [2D view](#)



*The views expressed herein can in no way be taken to reflect the official opinion of the European Space Agency or the European Union.
Contains modified Copernicus Sentinel data 2019, processed by VisioTerra.*

More on European Commission space:						
More on ESA:				S-1 website	S-2 website	S-3 website
More on Copernicus program:				SciHub portal	Cophub portal	Inthub portal
More on VisioTerra:				Sentinel Vision Portal	Envisat+ERS portal	Swarm+GOCE portal
				CryoSat portal		