

# A 30 million m3 landslide covers 2km<sup>2</sup> in Chunchi, Ecuador

Sentinel-2 MSI acquired on 12 April 2018  
Sentinel-1 CSAR IW acquired on 04 February 2021

...

Sentinel-1 CSAR IW acquired on 06 March 2021  
Sentinel-2 MSI acquired on 11 April 2021

Author(s): Sentinel Vision team, VisioTerra, France - [syp@visioterra.fr](mailto:syp@visioterra.fr)

Keyword(s): Geohazard, emergency, landslide, Ecuador.

Fig. 1 - S2 (12.04.2018) - A huge landslide occurred near the city of Chunchi on 12 February 2021.

[2D View](#)

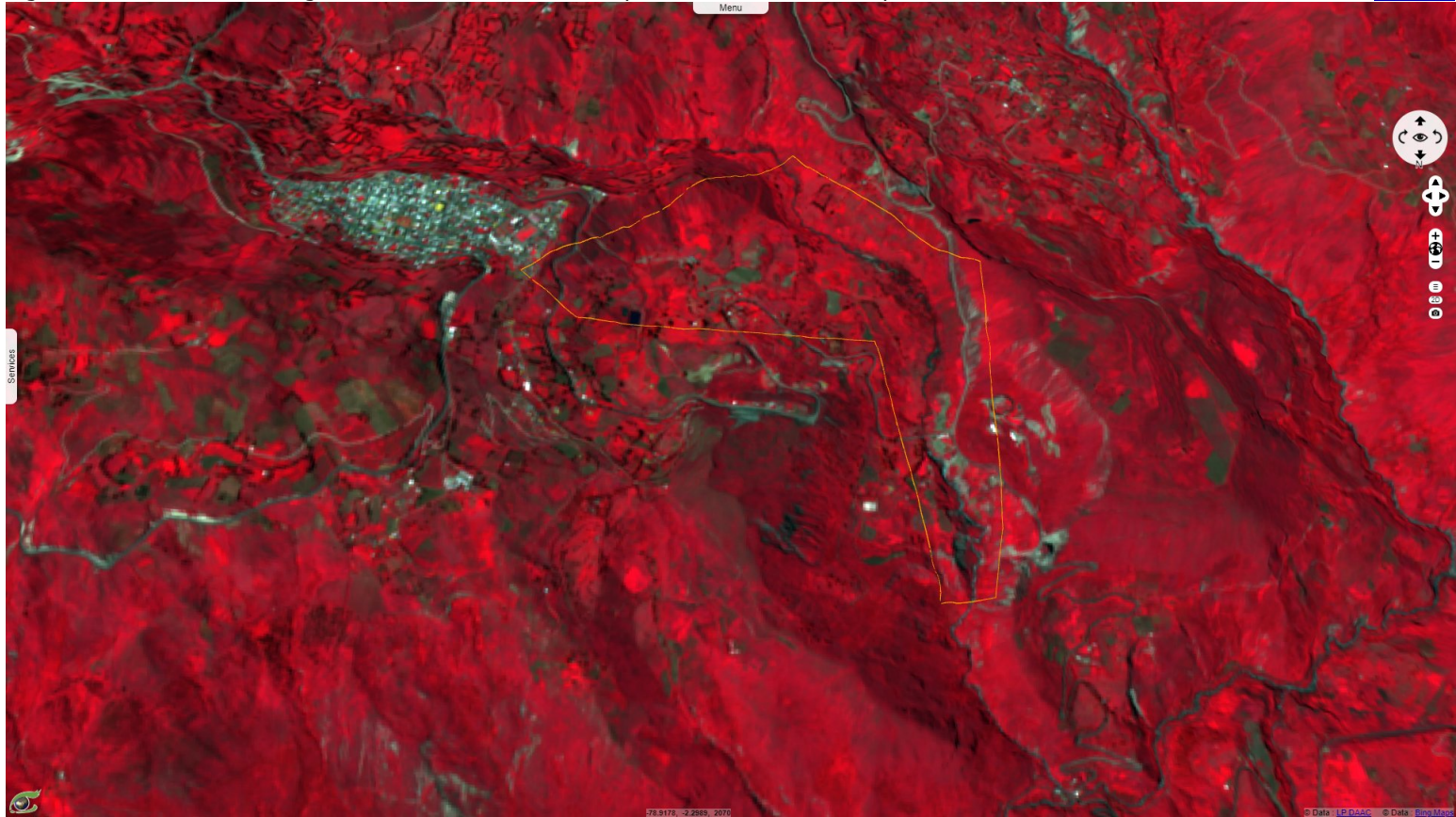




Fig. 2 - S2 (11.04.2021) - View 3 years after at the same date. It has a reported volume of about 30 million cubic metres. [2D Animation](#) [2D View](#)

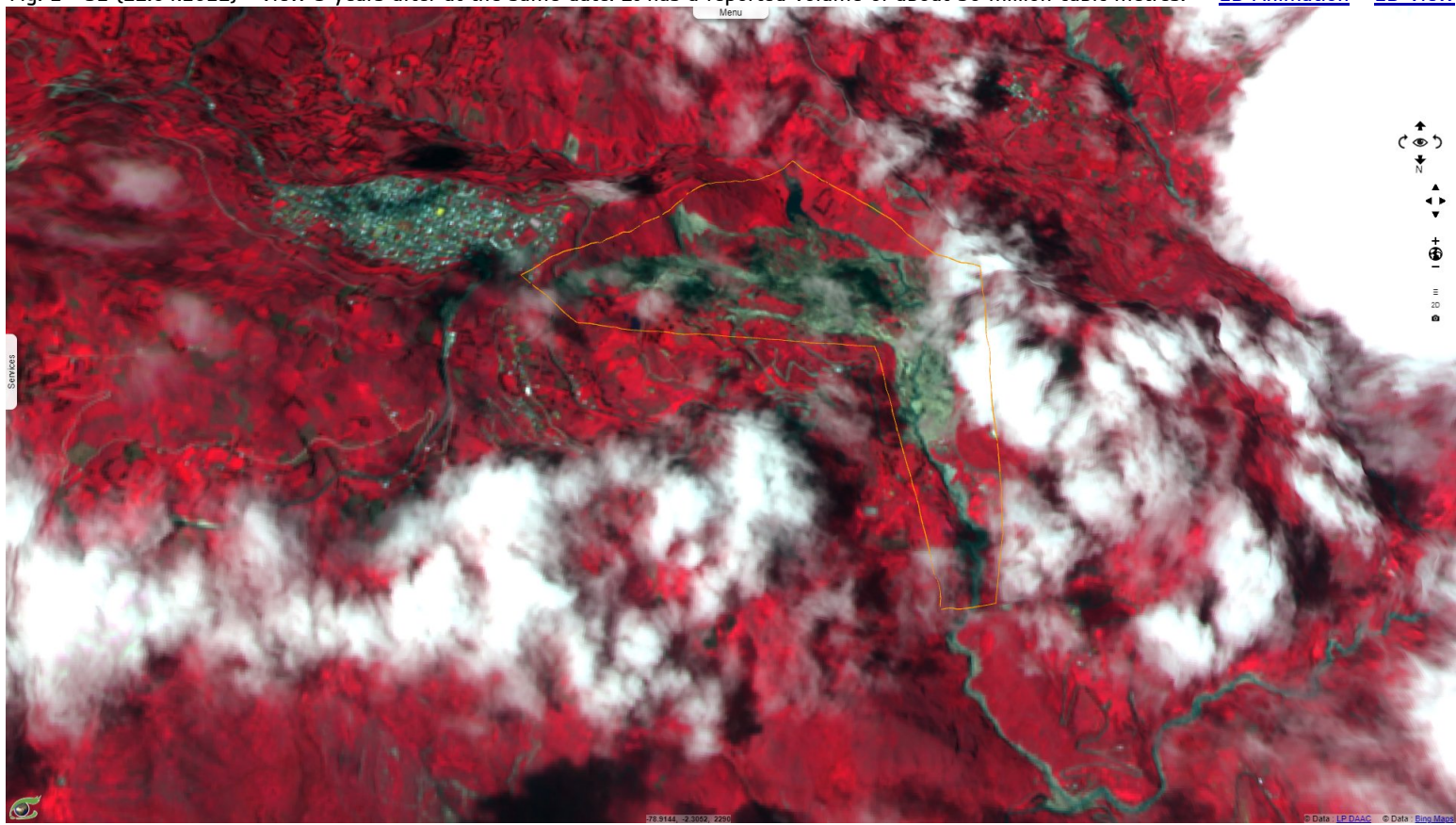


Fig. 3 - S1 (04 & 10.02.2021) - View before the landslide.

[2D View](#)

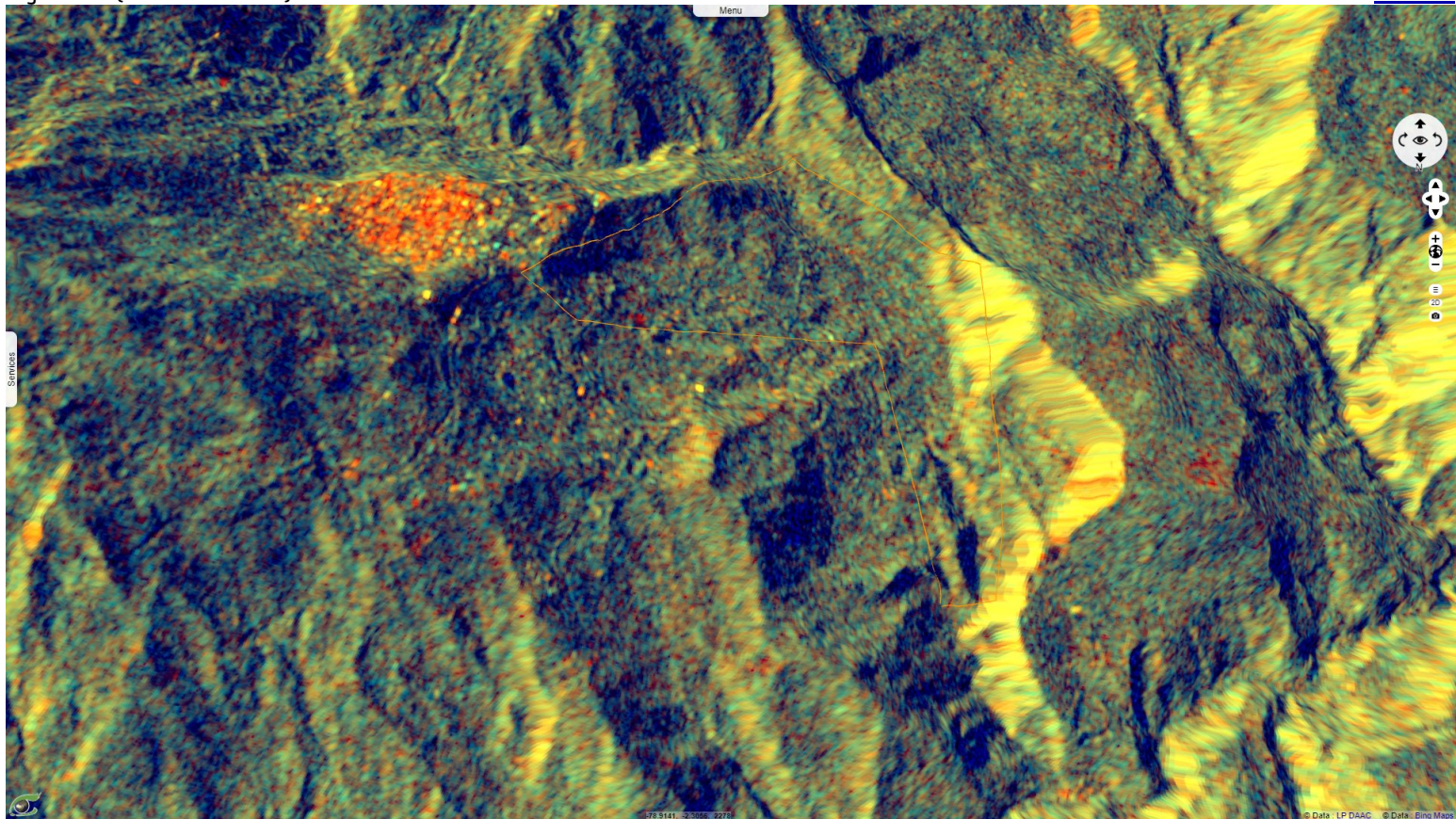




Fig. 4 - S1 (16.02.2021 -> 06.03.2021) - Small lakes formed near the upper slopes, caused by the blockage of the valley.

[2D Animation](#) [2D View](#)

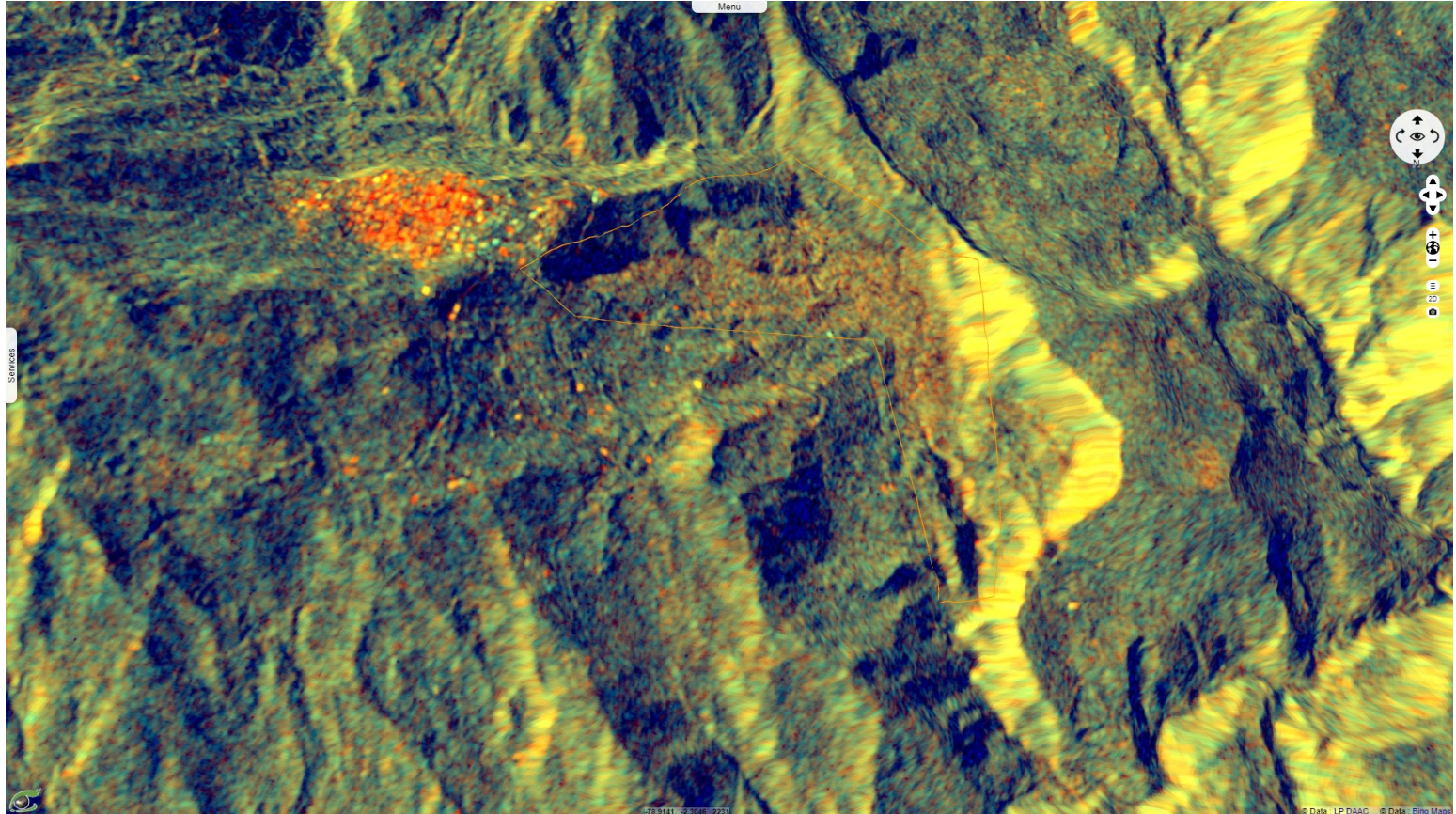
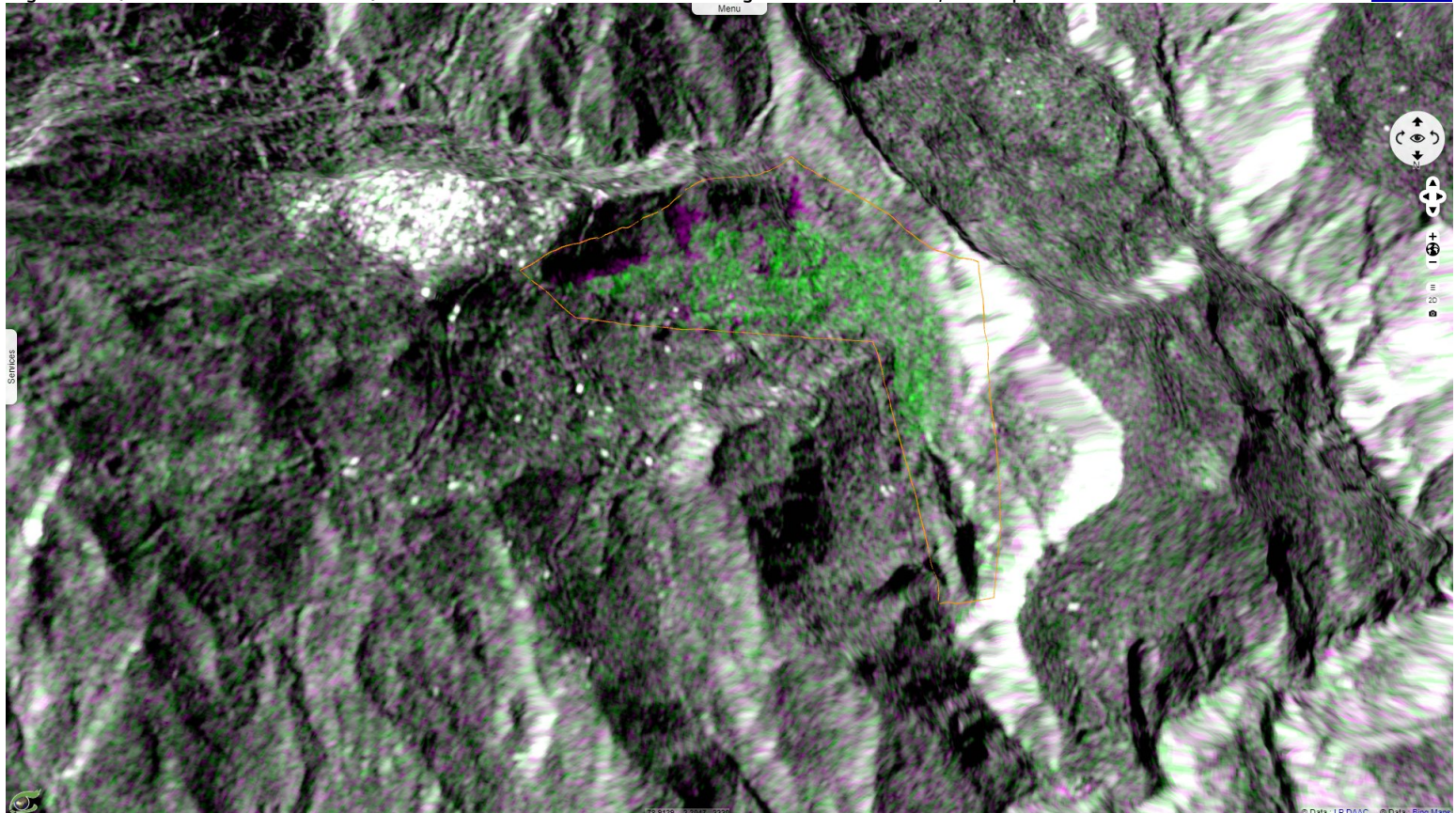


Fig. 5 - S1 (04.02.2021 -> 06.03.2021) - The saturated colours show the magnitude of the event, two square kilometres.

[2D View](#)



*The views expressed herein can in no way be taken to reflect the official opinion of the European Space Agency or the European Union.  
Contains modified Copernicus Sentinel data 2021, processed by VisioTerra.*

More on European Commission space:							
More on ESA:				<a href="#">S-1 website</a>	<a href="#">S-2 website</a>	<a href="#">S-3 website</a>	
More on Copernicus program:				<a href="#">SciHub portal</a>	<a href="#">Cophub portal</a>	<a href="#">Inthub portal</a>	<a href="#">Colhub portal</a>
More on VisioTerra:				<a href="#">Sentinel Vision Portal</a>	<a href="#">Envisat+ERS portal</a>	<a href="#">Swarm+GOCE portal</a>	<a href="#">CryoSat portal</a>