

Once in a generation flooding in eastern Australia

Sentinel-2 MSI acquired on 09 February 2022 at 23:52:39 UTC

Sentinel-1 CSAR IW acquired on 11 February 2022 from 19:13:30 to 19:14:20 UTC

Sentinel-2 MSI acquired on 18 February 2022 at 00:02:41 UTC

Sentinel-1 CSAR IW acquired on 23 February 2022 from 19:13:30 to 19:14:20 UTC

Sentinel-3 SLSTR RBT acquired on 23 February 2022 from 22:52:46 to 23:32:11 UTC

Author(s): Sentinel Vision team, VisioTerra, France - svp@visioterra.fr

Keyword(s): Emergency, climate change, weather, natural disaster, precipitations, flooding, river, Australia



[2D Layerstack](#)

Fig. 1 - S3 SLSTR (28.02.2022) - The Australian continent has experienced a faced rainfall event associated with the current La Nina event. [2D view](#)

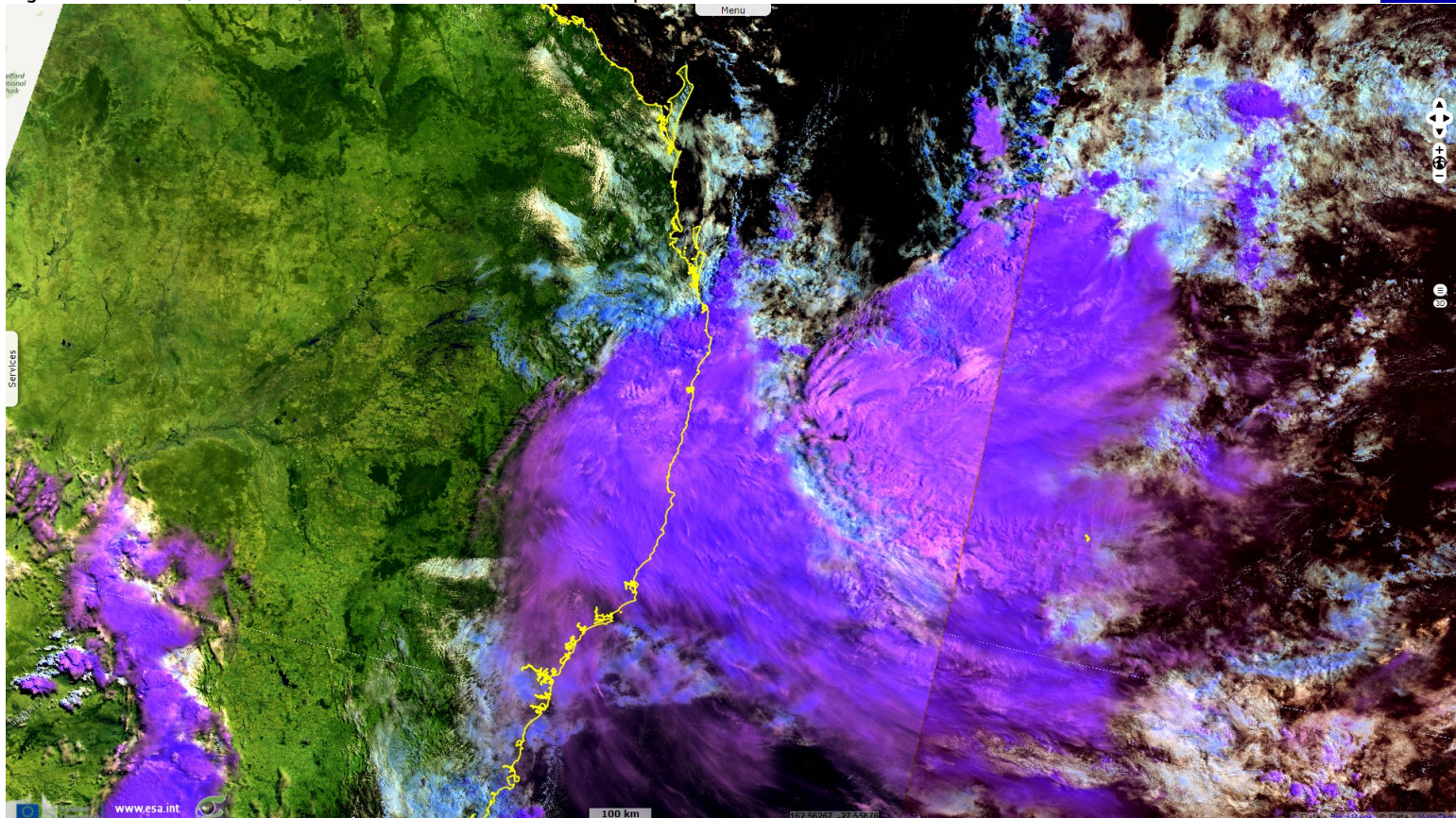


Fig. 2 - S1 (11, 18 & 23.02.2022, 02 & 05.03.2022) - This weather pattern has impacted S-E Queensland & N-E New South Wales. [2D view](#)

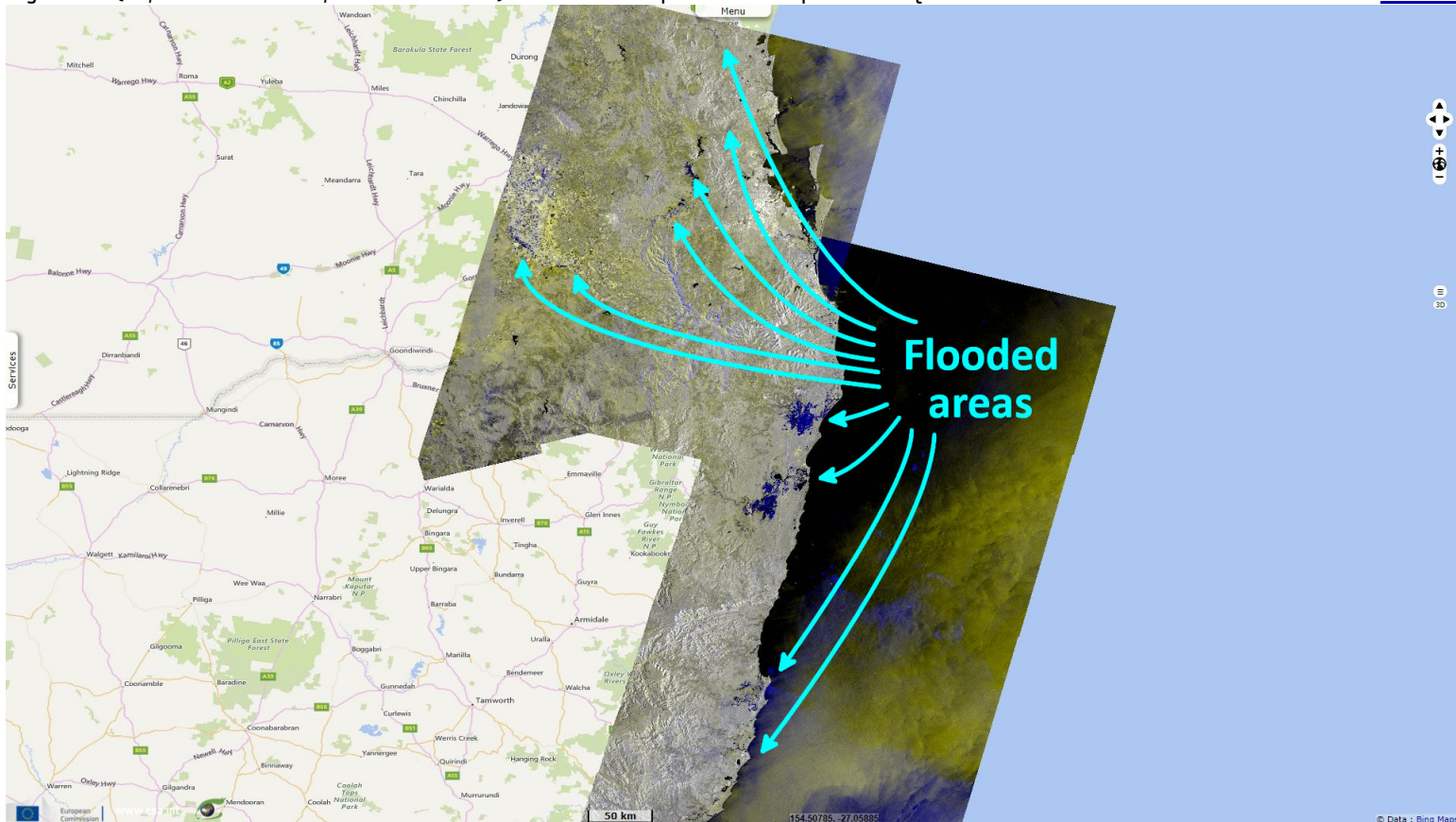
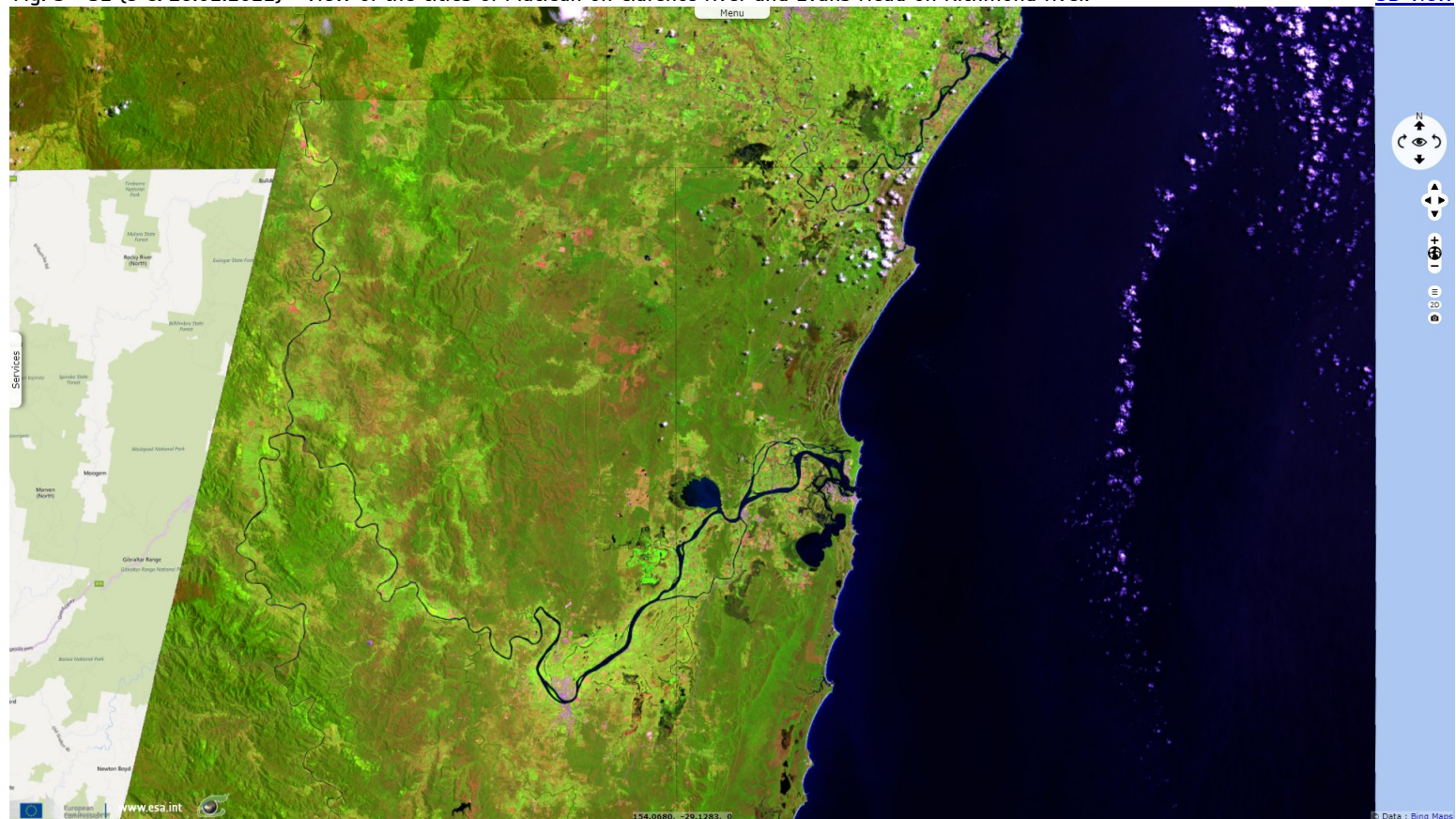


Fig. 3 - S2 (9 & 18.02.2022) - View of the cities of Maclean on Clarence river and Evans Head on Richmond river.

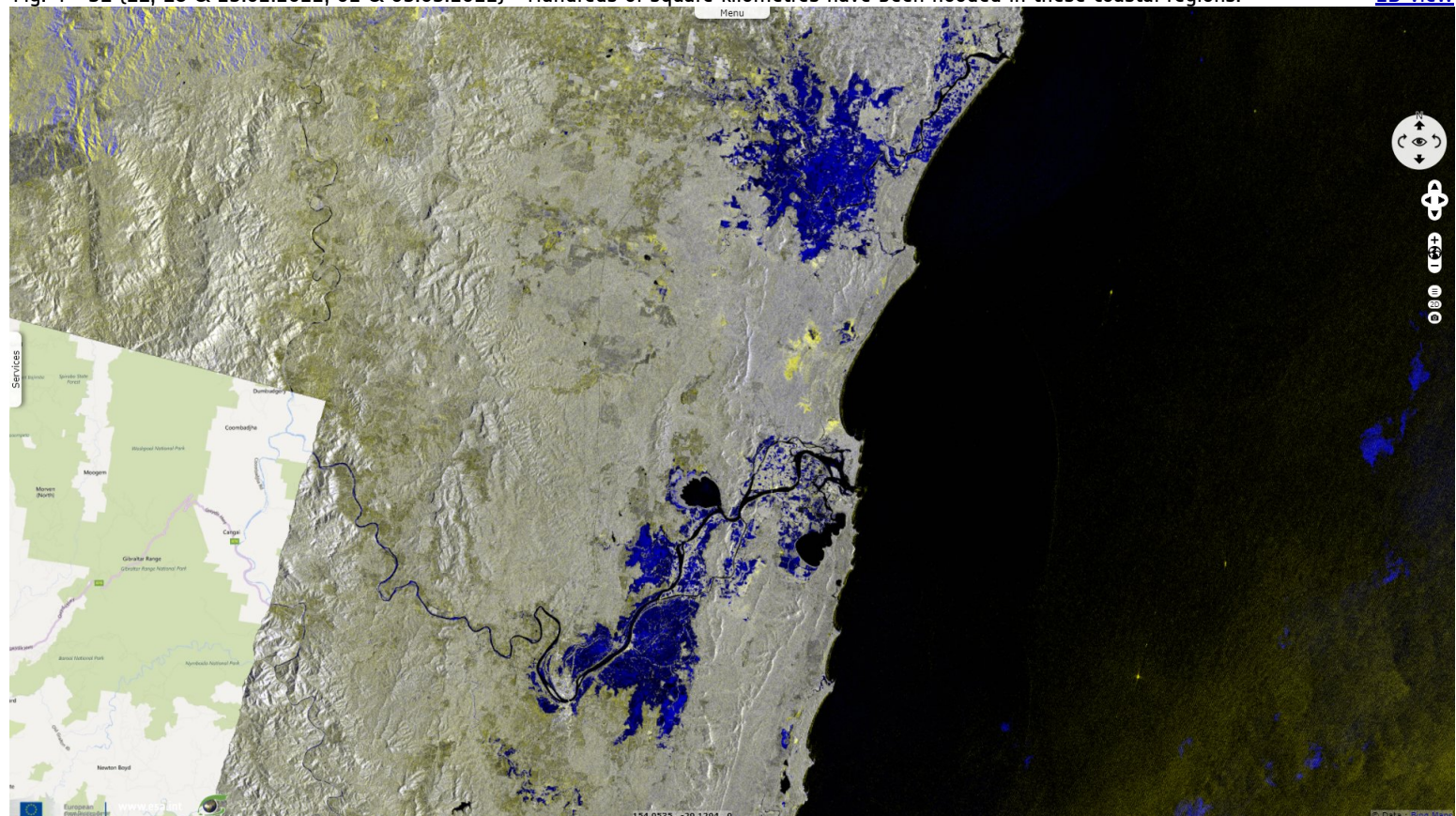
[3D view](#)



According to floodlist.com, as much as 117 mm of rain fell in just 1 hour in Kippa-Ring, a suburb in the Moreton Bay Region. Bureau of Meteorology figures nearby Clontarf recorded 340 mm in 24 hours on 27 February and 330 the following 24 hour period. The highest total was recorded at Upper Springbrook with 530 mm. The highest in the Brisbane area was Bracken Ridge Reservoir with 444 mm.

Fig. 4 - S1 (11, 18 & 23.02.2022, 02 & 05.03.2022) - Hundreds of square kilometres have been flooded in these coastal regions.

[2D view](#)



A large number of the communities within the area have experienced once in a generation flooding. The Mary River at Gympie jumped to 22.96 metres early 27 February. Major flood stage here is 17 metres. The Wilsons River peaked at a record 14.11 metres early on 28 February, beating previous record highs of 1974 (12.15 m) and 1954 (12.27 m).

Fig. 5 - S1 (11, 18 & 23.02.2022, 02 & 05.03.2022) - Floods near Kempsey & Port Macquarie, built along Macleay river & Hastings river. [3D view](#)

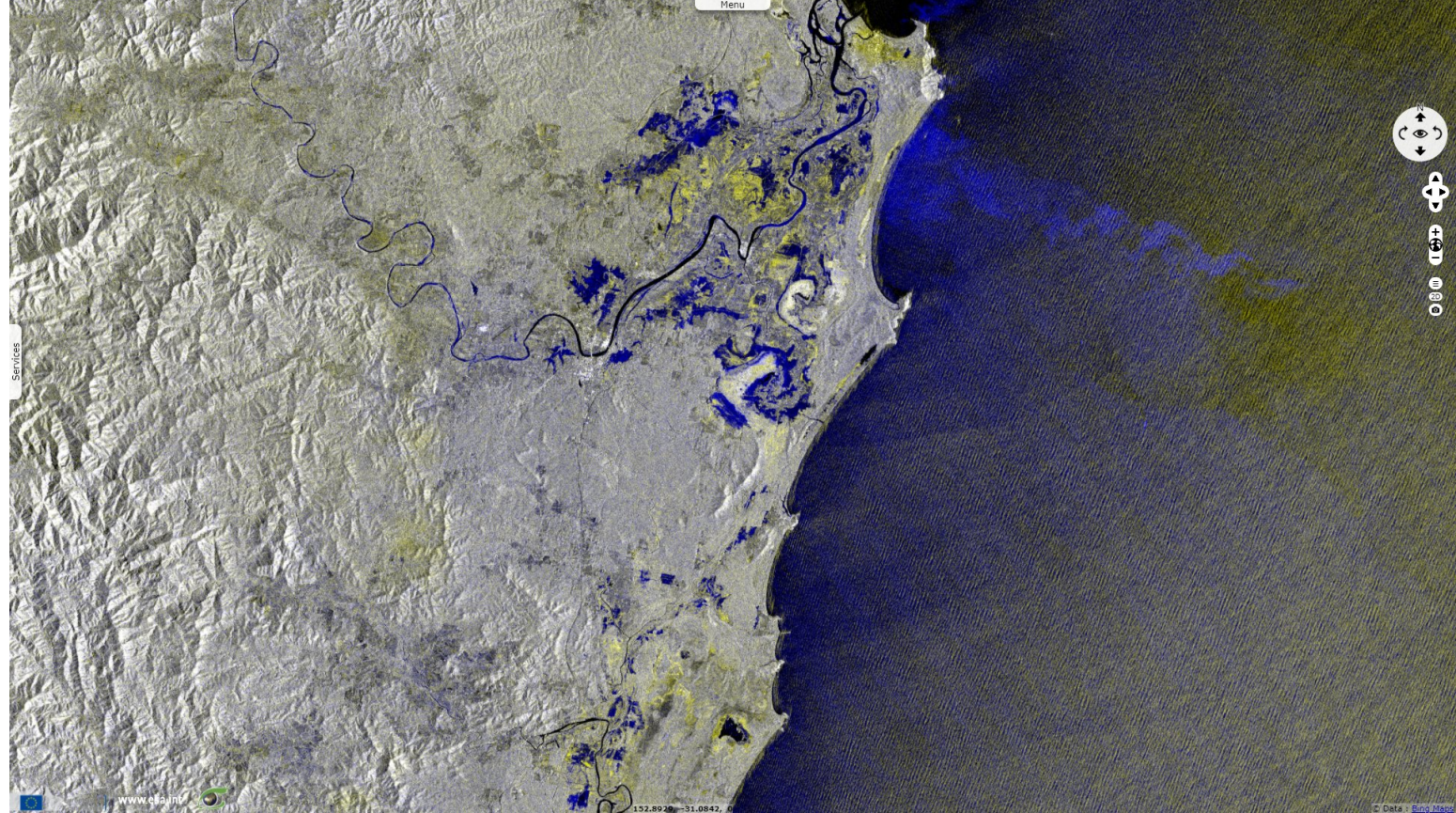
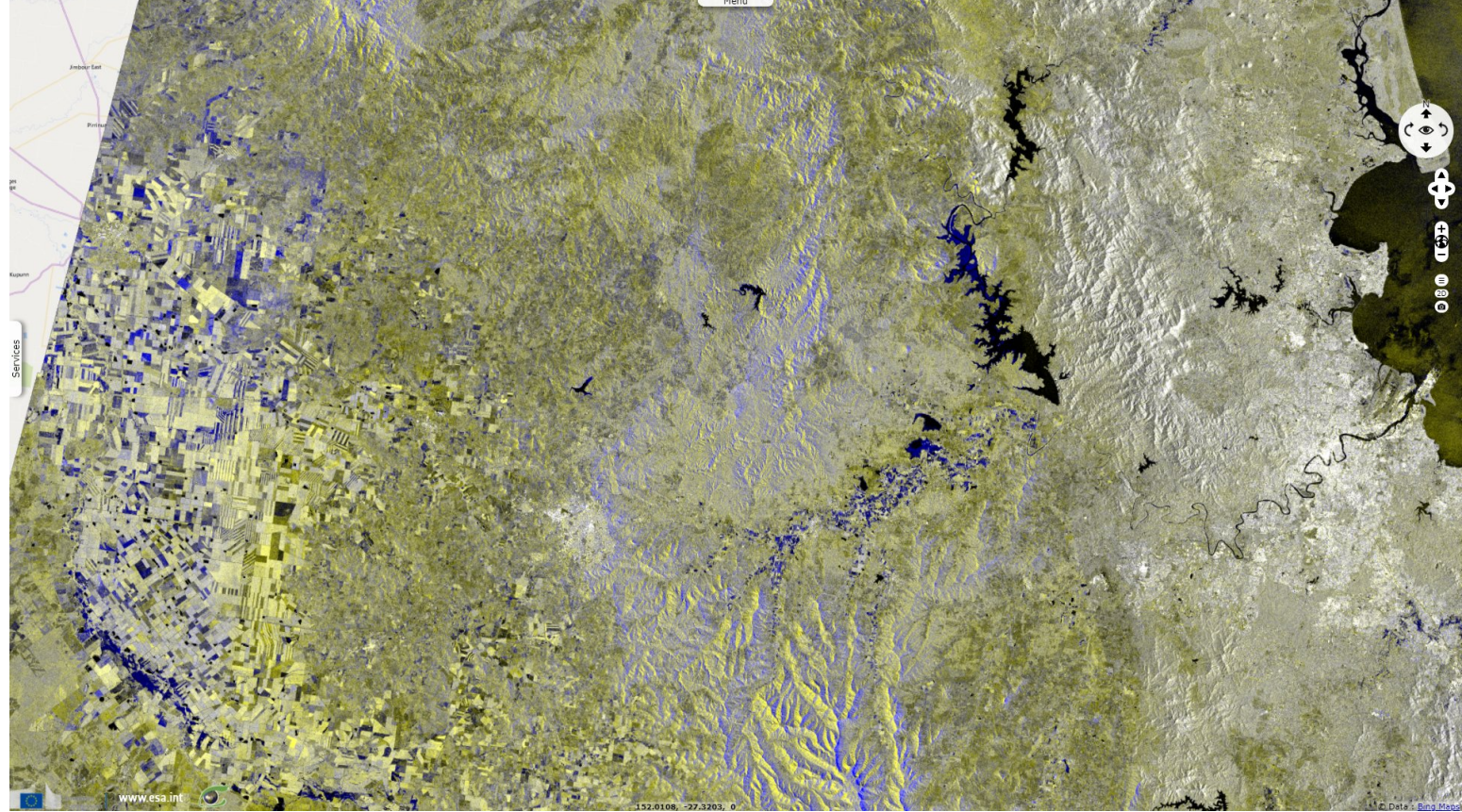














Fig. 6 - S1 (11, 18 & 23.02.2022, 02 & 05.03.2022) - Regions inland of Brisbane have been affected, with swollen rivers damaging crops. [2D view](#)



*The views expressed herein can in no way be taken to reflect the official opinion of the European Space Agency or the European Union.
Contains modified Copernicus Sentinel data 2022, processed by VisioTerra.*

More on European Commission space:						
More on ESA:				S-1 website	S-2 website	S-3 website
More on Copernicus program:				SciHub portal	Cophub portal	Inthub portal
More on VisioTerra:				Sentinel Vision Portal	Envisat+ERS portal	Swarm+GOCE portal
				CryoSat portal		