

Heavy rainfall in north-east Scottish Lowlands, UK

Sentinel-1 CSAR IW acquired on 13 October 2022 from 17:59:34 to 17:59:59 UTC
Sentinel-1 CSAR IW acquired on 15 October 2022 at 17:43:21 UTC
... Sentinel-1 CSAR IW acquired on 18 November 2022 from 17:59:34 to 17:59:59 UTC
Sentinel-1 CSAR IW acquired on 20 November 2022 at 17:43:21 UTC

Author(s): Sentinel Vision team, VisioTerra, France - svp@visioterra.fr

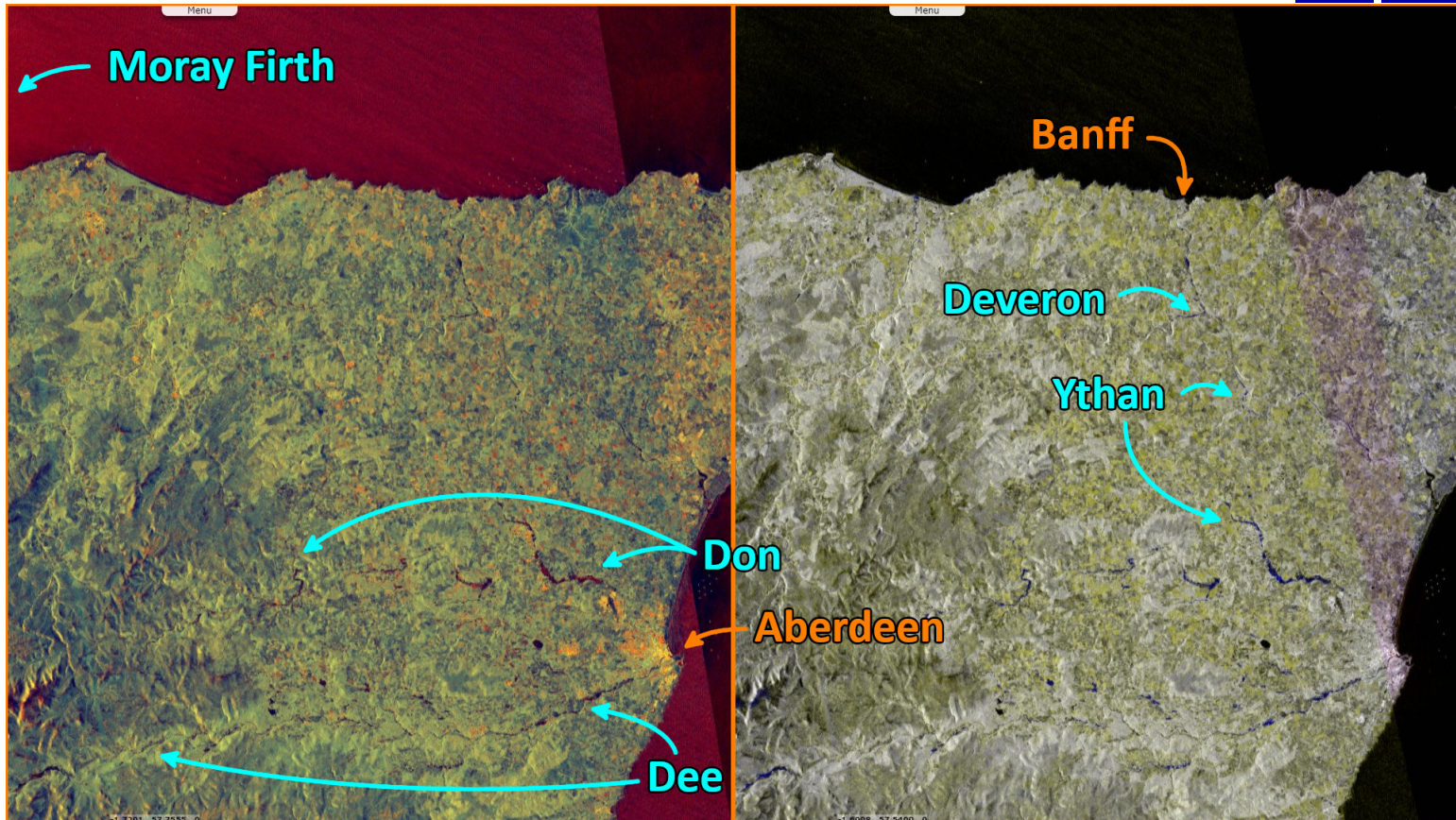
Keyword(s): Emergency, natural disaster, rainfall, precipitation, hydrology, flooding, Scotland, United Kingdom, UK



[2D Layerstack](#)

[3D view](#) [3D view](#)

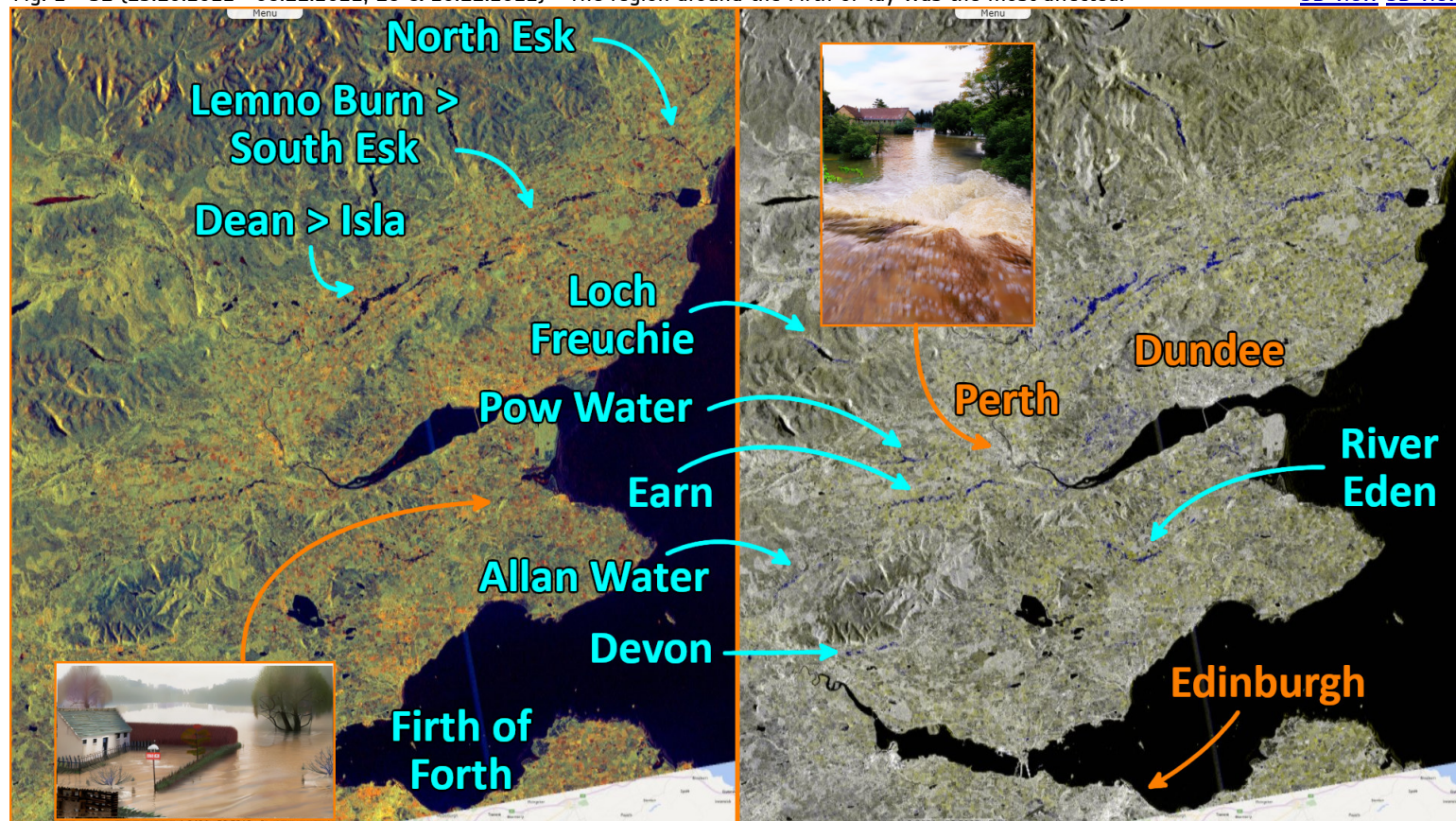
Fig. 1 - S1 (13.10.2022->08.11.2022; 18 & 20.11.2022) - Widespread floods occurred in the north-east of the Lowlands from Edinburgh to Aberdeen.



Heavy rain fell across Scotland from 16 November, in particular areas of the north east. The UK's Met Office said close to a month's worth of rain fell across parts of Aberdeenshire and Angus in 48 hours to 18 November.

Fig. 2 - S1 (13.10.2022->08.11.2022; 18 & 20.11.2022) - The region around the Firth of Tay was the most affected.

[3D view](#) [3D view](#)



As much as 140 mm of rain was recorded in Charr in Aberdeenshire. There were some record breaking totals in the west too, with some rainfall gauges on the Isle of Skye recording 251 mm of rain in the space of 48 hours. One person is missing after being swept away.

*The views expressed herein can in no way be taken to reflect the official opinion of the European Space Agency or the European Union.
Contains modified Copernicus Sentinel data 2022, processed by VisioTerra.*

| | | | | | | |
|------------------------------------|--|--|--|--|------------------------------------|--|
| More on European Commission space: | | | | | | |
| More on ESA: | | | | S-1 website | S-2 website | S-3 website |
| More on Copernicus program: | | | | SciHub portal | Cophub portal | Inthub portal Colhub portal |
| More on VisioTerra: | | | | Sentinel Vision Portal | Envisat+ERS portal | Swarm+GOCE portal CryoSat portal |