

Record canyons in Arequipa region, Peru

Sentinel-2 MSI acquired on 19 November 2018 at 15:07:11 UTC

Sentinel-2 MSI acquired on 21 November 2018 at 14:57:19 UTC

...

Sentinel-1 CSAR IW acquired on 13 January 2019 at 10:31:18 UTC

Sentinel-1 CSAR IW acquired on 14 January 2019 from 23:23:44 to 23:24:09 UTC

Author(s): Sentinel Vision team, VisioTerra, France - svp@visioterra.fr

Keyword(s): Mountain range, canyon, river, agriculture, volcano, subduction zone, Peru, Pacific Ring of Fire.

[2D Layerstack](#)

Fig. 1 - S2 (19 & 21.11.2018) - Located within the Andean cordillera, the Arequipa region features the deepest canyons on Earth.

[2D view](#)

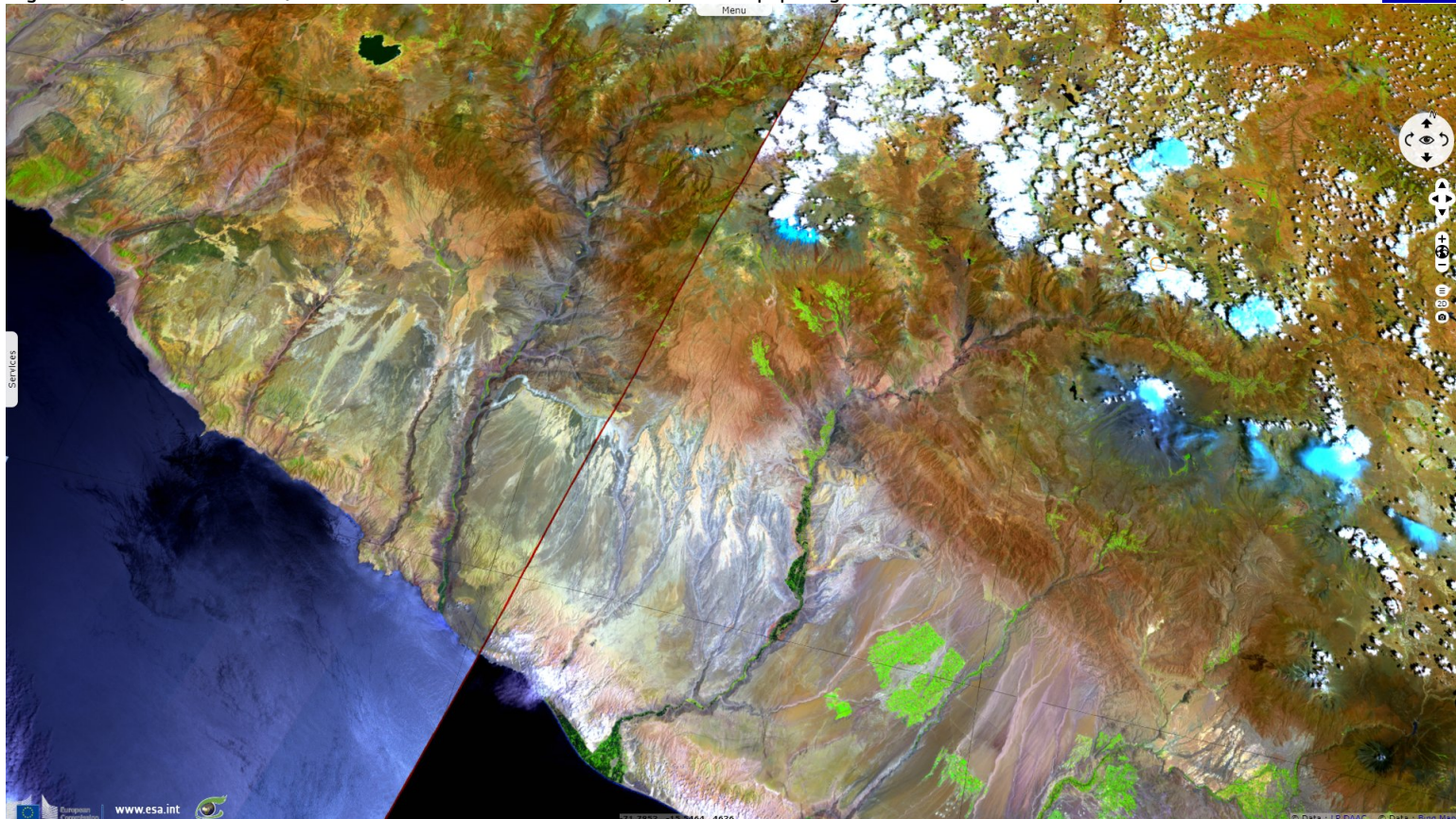


Fig. 2 - S1 (08.01.2019) - Relief x1 - Cotahuasi Canyon is 3354 m deep; the relief drops from the 6425 m Coropuna to sea level in 100 km.

[3D view](#)

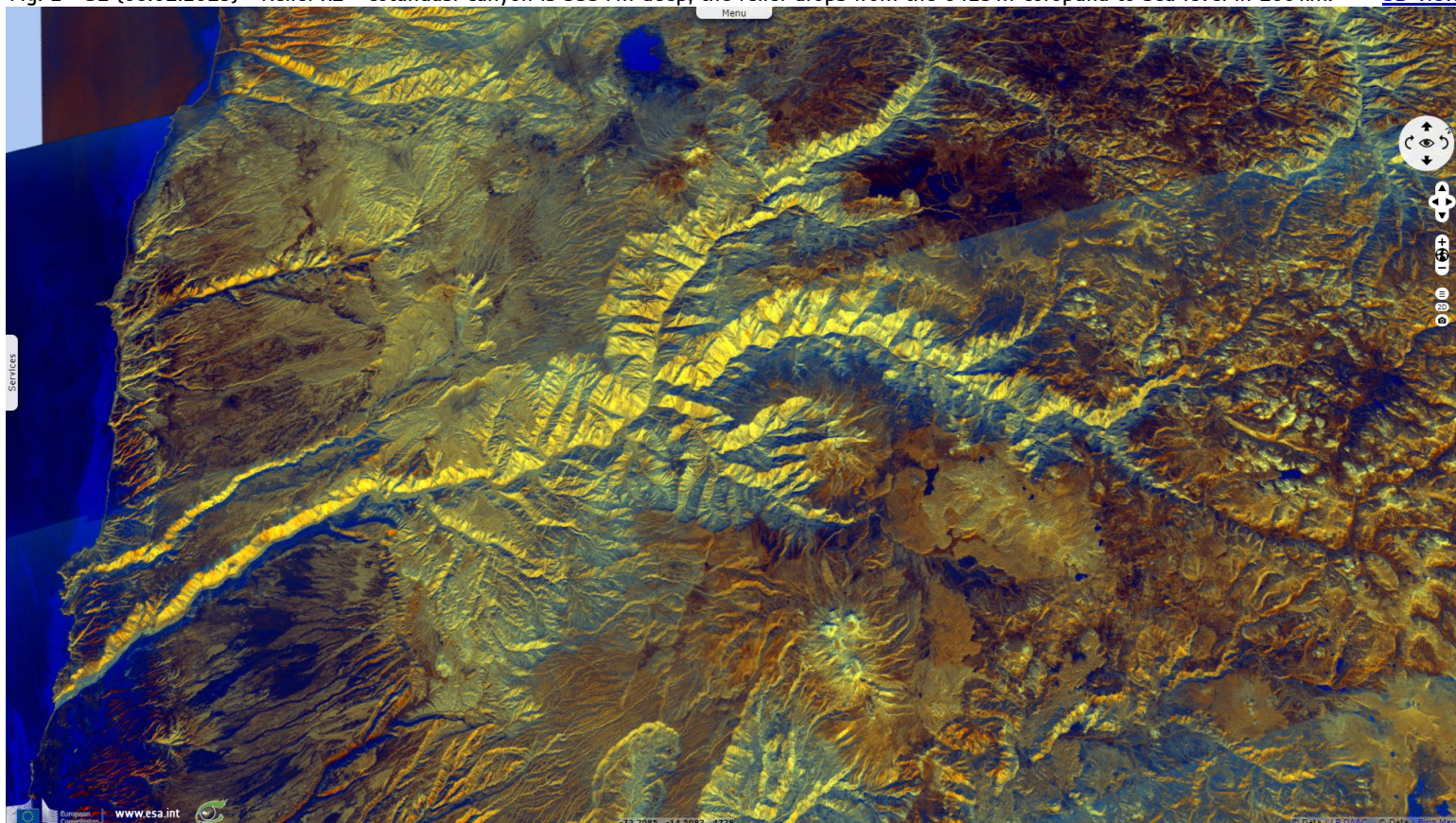


Fig. 3 - Colca Canyon is 70 km long & 3270 m deep. At right, the 5600 m high Nevado Mismi, the most distant source of the Amazon river. [3D view](#)

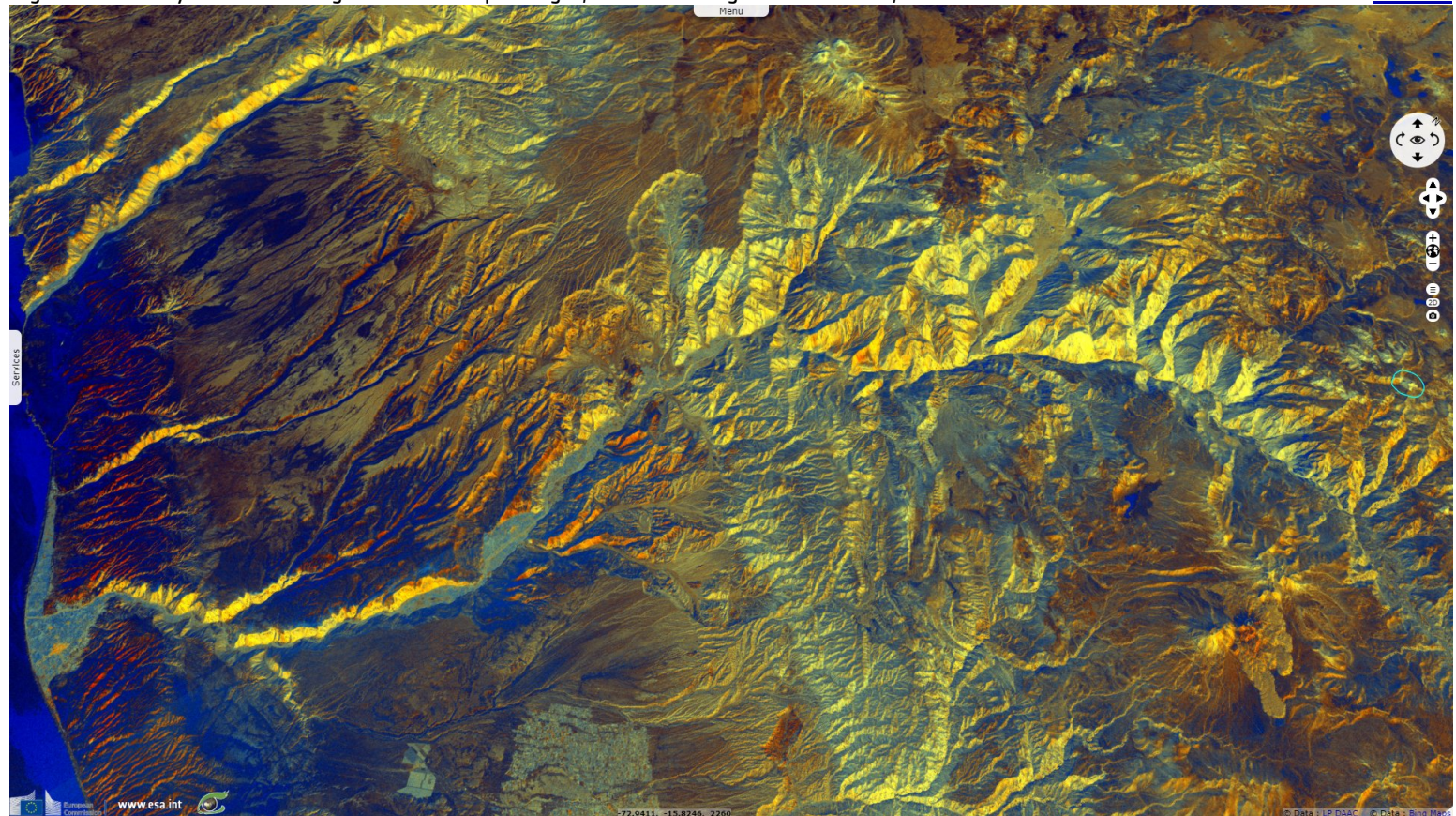
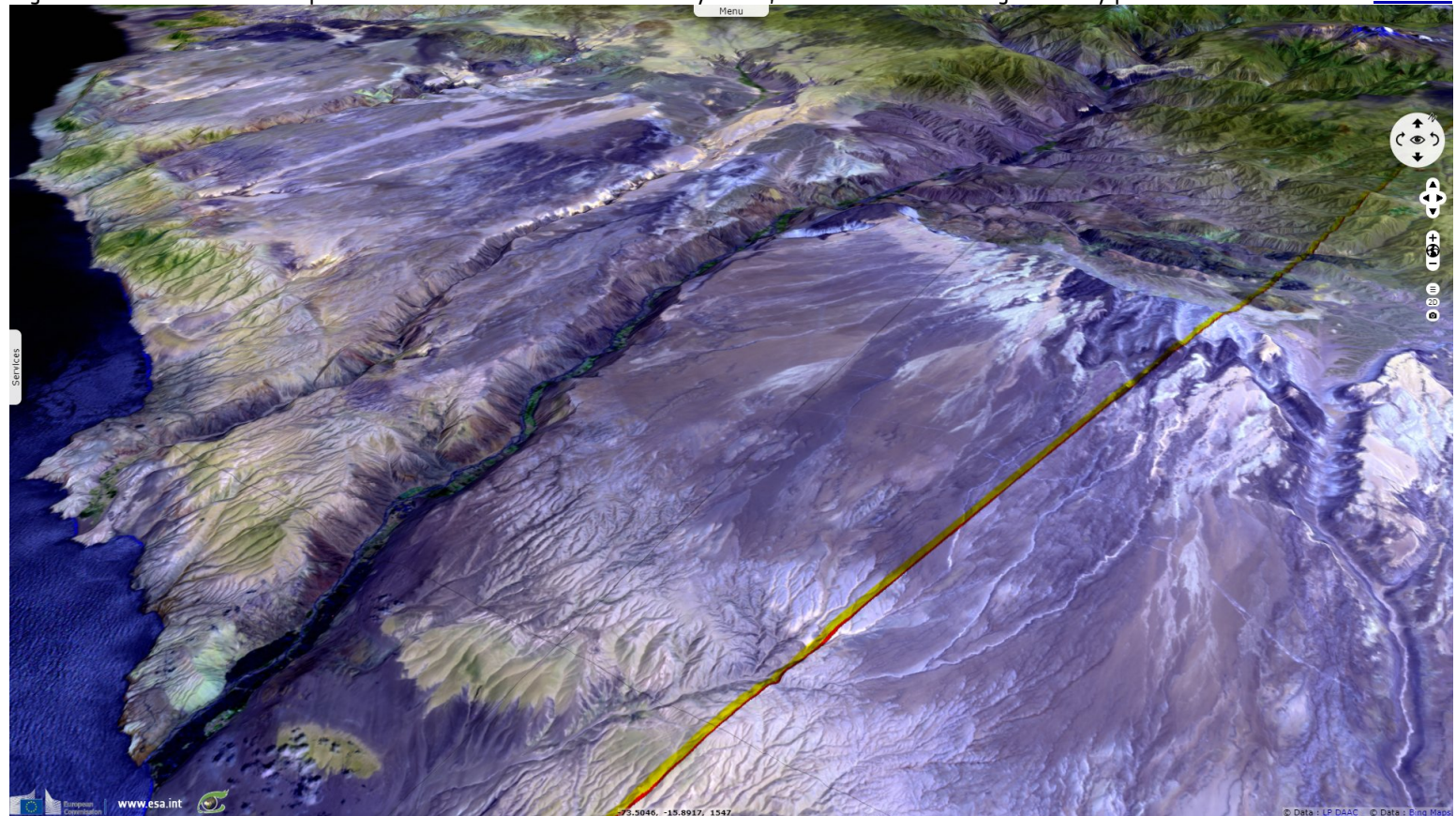


Fig. 4 - S2 - The numerous eruptions have made the local soil extremely fertile, it is one of the most agriculturally productive in Peru. [3D view](#)



*The views expressed herein can in no way be taken to reflect the official opinion of the European Space Agency or the European Union.
Contains modified Copernicus Sentinel data 2019, processed by VisioTerra.*

More on European Commission space:						
More on ESA:				S-1 website	S-2 website	S-3 website
More on Copernicus program:				SciHub portal	Cophub portal	Inthub portal
More on VisioTerra:				Sentinel Vision Portal	Envisat+ERS portal	Swarm+GOCE portal
					CryoSat portal	