

Mount Gunnbjørn, Greenland, roof of the Arctic Circle

Sentinel-1 CSAR IW acquired on 20 March 2021 from 08:37:21 to 08:37:46 UTC

...

Sentinel-2 MSI acquired on 27 April 2021 at 13:57:29 UTC

Sentinel-2 MSI acquired on 30 August 2021 at 14:00:21 UTC

Sentinel-1 CSAR IW acquired on 22 September 2021 from 08:38:12 to 08:38:37 UTC

Author(s): Sentinel Vision team, VisioTerra, France - svp@visioterra.fr

Keyword(s): Polar, cryosphere, summit, mountain range, glacier, ice sheet, fjord, snow, ice, Greenland, Denmark, Arctic Circle



[2D Layerstack](#)

Fig. 1 - S1 (16->28.09.2021) - Gunnbjørn Fjeld is the tallest mountain in Greenland, the Kingdom of Denmark, and north of the Arctic Circle. [3D view](#)



Fig. 2 - S1 (14->26.03.2021) - It is located 55 kilometres from the sea where its glacier ends its course. [3D view](#)

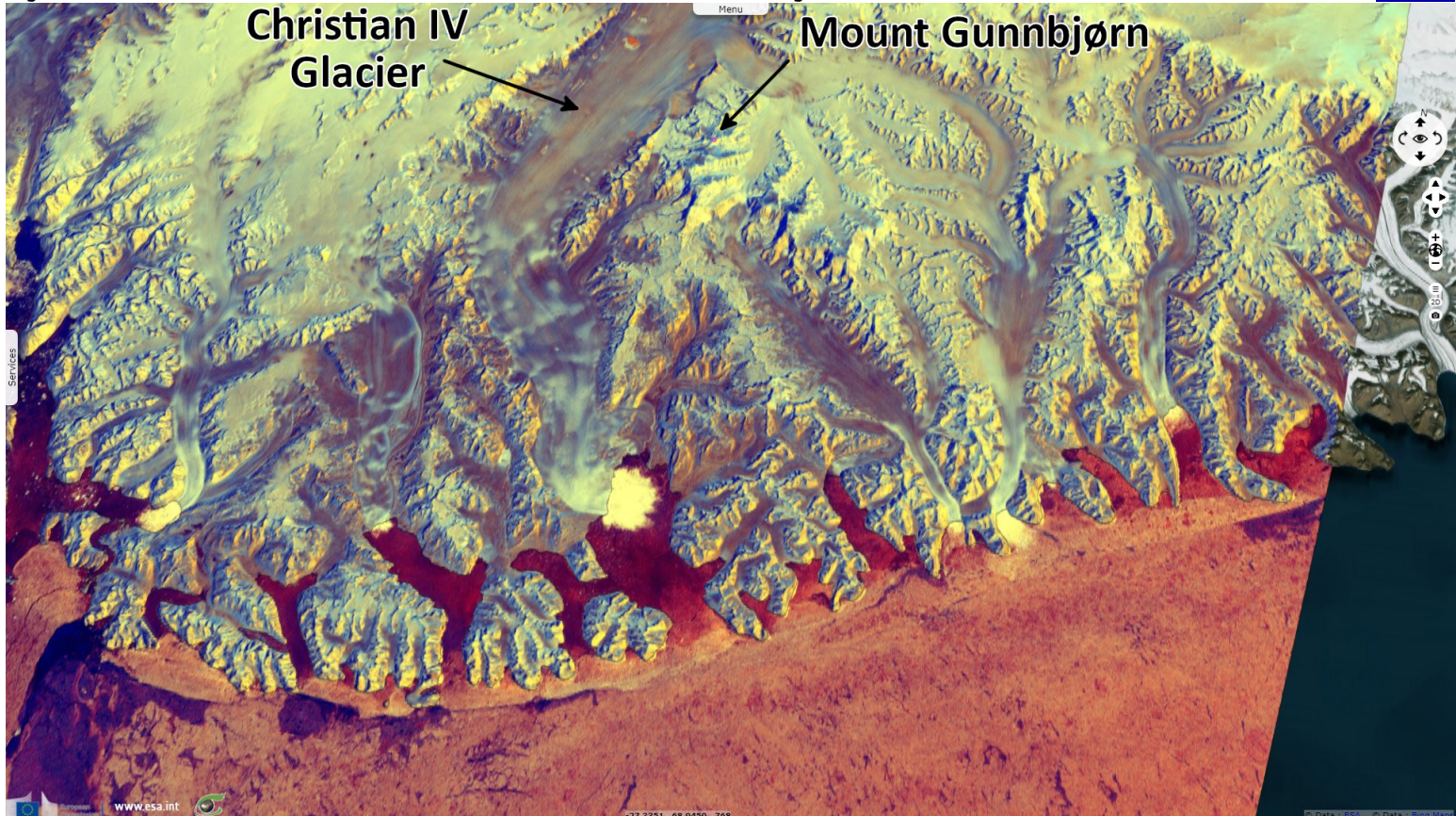


Fig. 3 - S2 (27.04.2021) - Gunnbjørn Fjeld is located on the Greenland east coast, in the Watkins Range.

[3D view](#)

**Christian IV
Glacier**

Mount Gunnbjørn

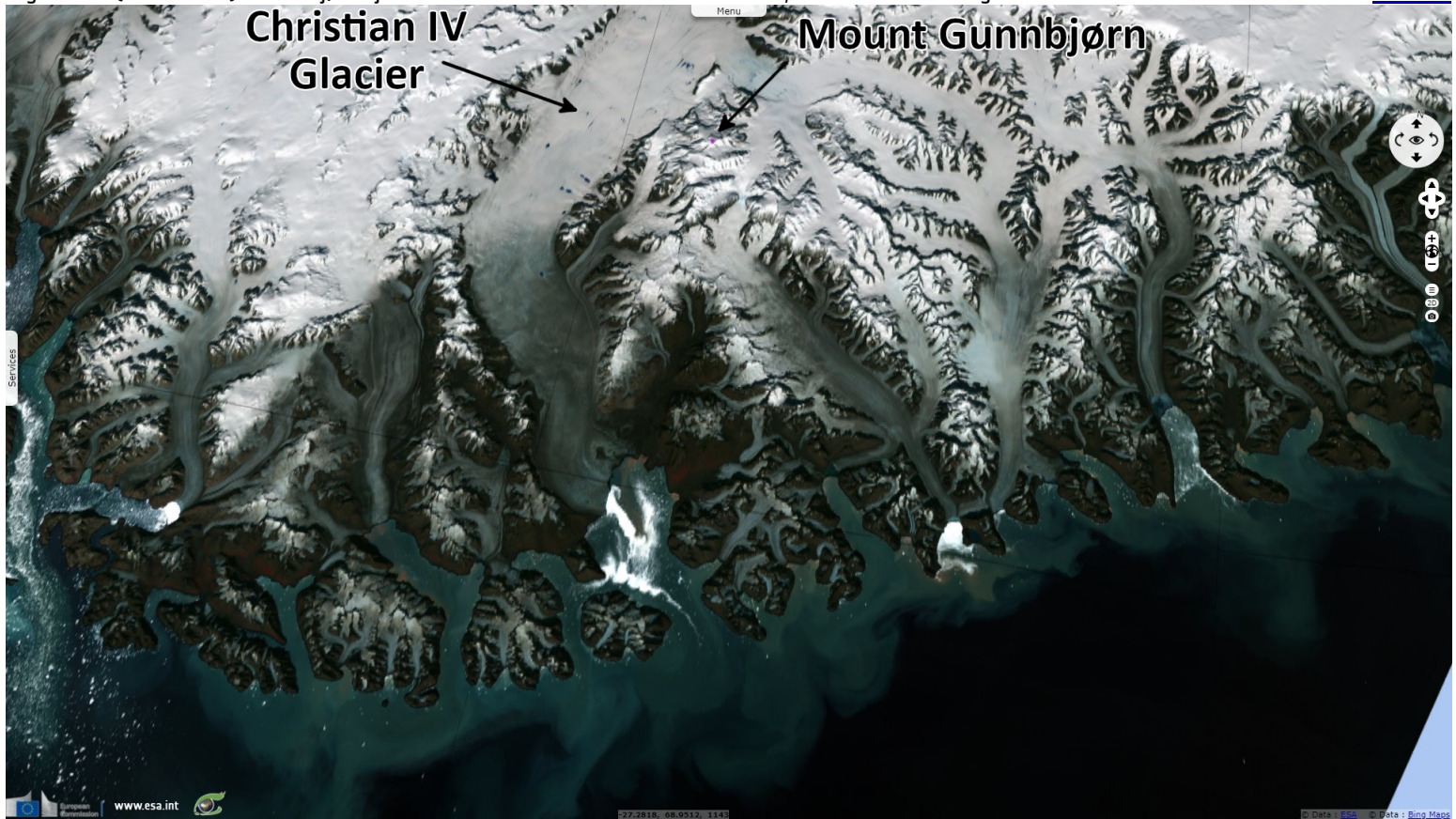


Fig. 4 - S1 (16->28.09.2021) - It is the highest of its nunataks, rocky peaks protruding through glacial ice.

[3D view](#)

Mount Gunnbjørn

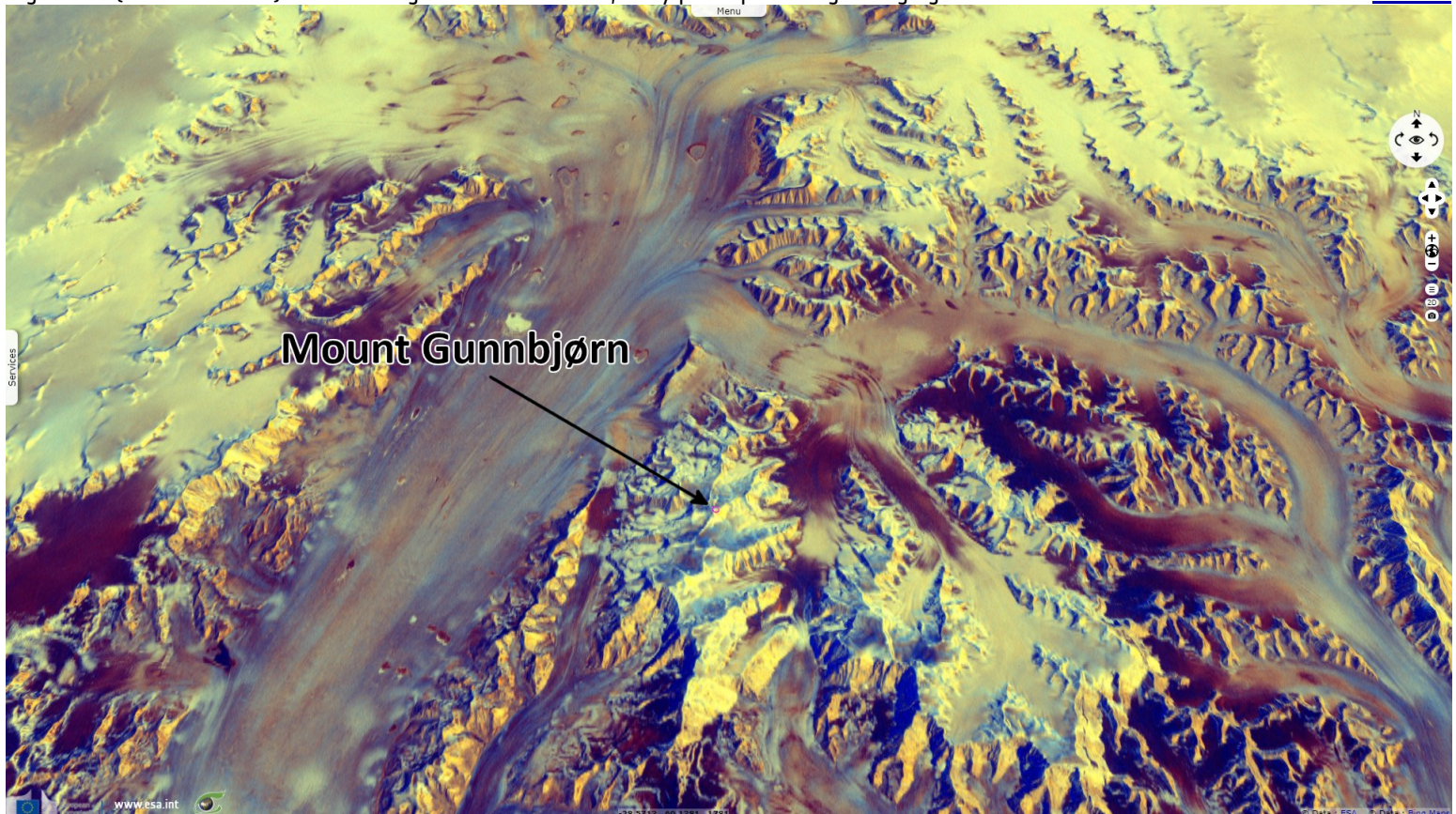
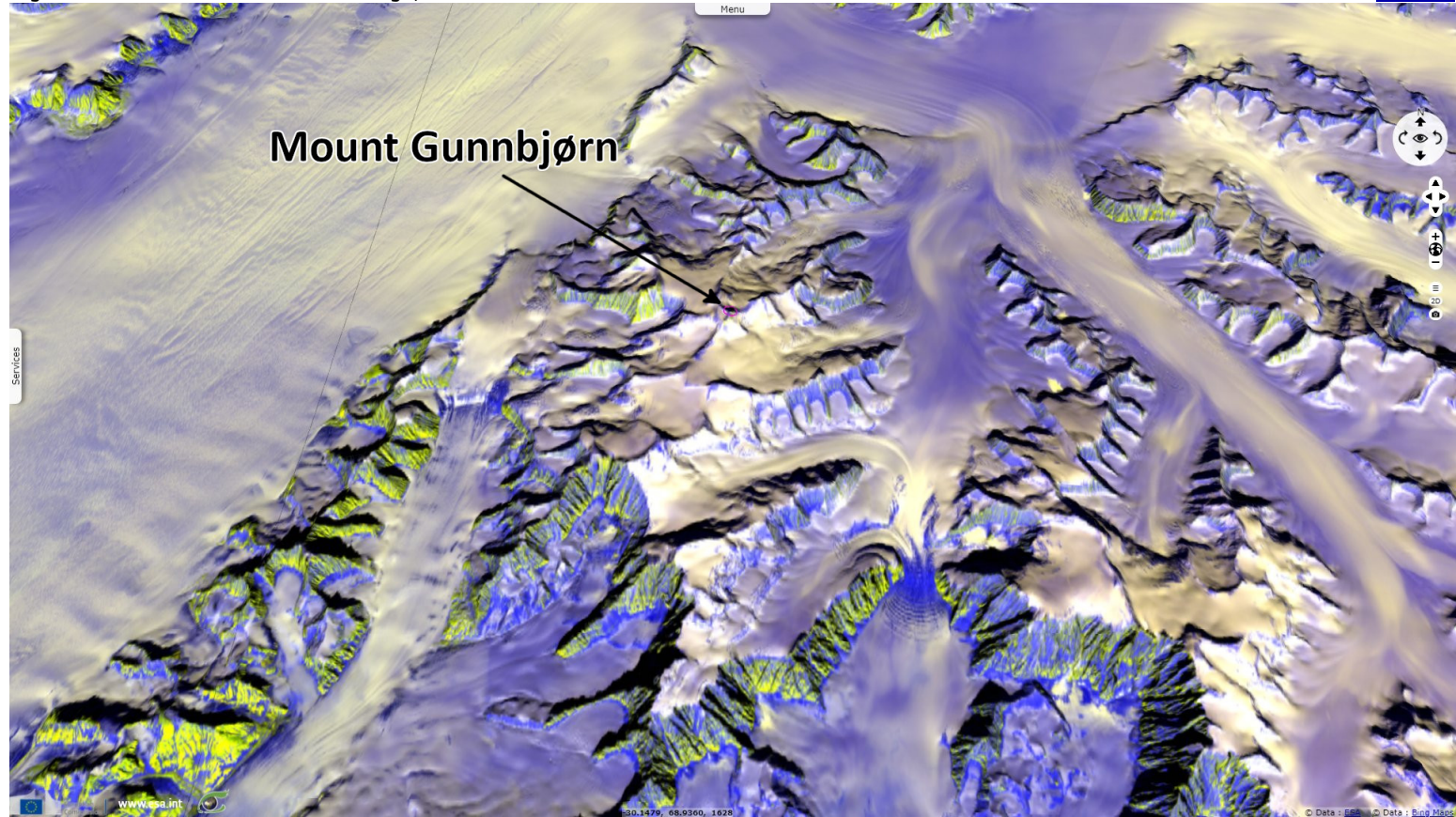


Fig. 5 - S2 (27.04.2021) - At 3694 m high, it dominates several other summits above 3500 metres.

[3D view](#)

Mount Gunnbjørn



*The views expressed herein can in no way be taken to reflect the official opinion of the European Space Agency or the European Union.
Contains modified Copernicus Sentinel data 2022, processed by VisioTerra.*

More on European Commission space:							
More on ESA:				S-1 website	S-2 website	S-3 website	
More on Copernicus program:				SciHub portal	Cophub portal	Inthub portal	Colhub portal
More on VisioTerra:				Sentinel Vision Portal	Envisat+ERS portal	Swarm+GOCE portal	CryoSat portal



Funded by the EU and ESA

SED-1013-SentinelVision

