

Witenwasserenstock peak, at the crossroad of 3 seas

Sentinel-1 CSAR IW acquired on 03 September 2018 at 17:15:17 UTC

Sentinel-2 MSI acquired on 19 October 2018 at 10:20:31 UTC

Sentinel-1 CSAR IW acquired on 06 February 2019 at 17:15:14 UTC

Sentinel-2 MSI acquired on 21 February 2019 at 10:20:39 UTC

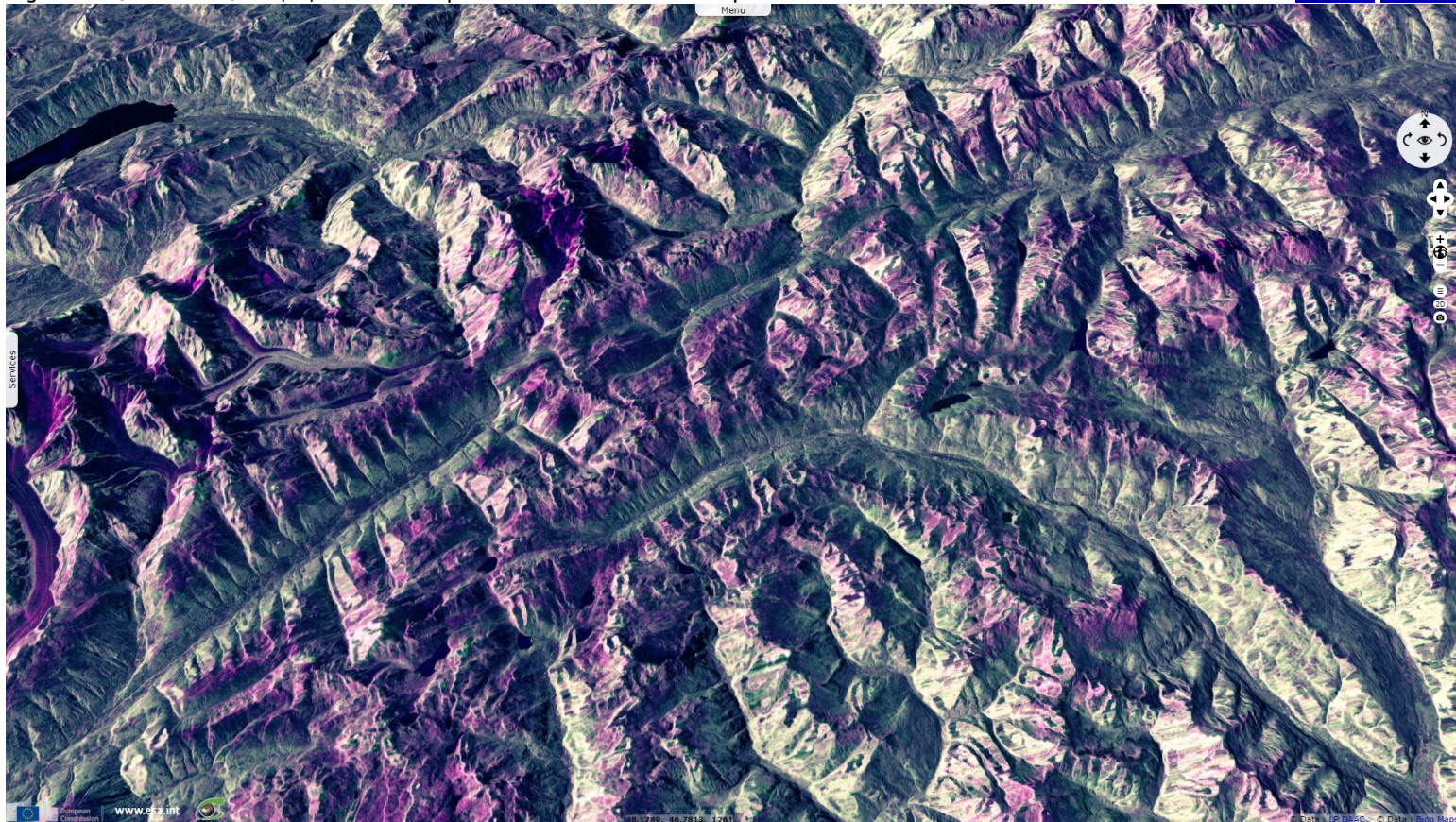
Author(s): Sentinel Vision team, VisioTerra, France - svp@visioterra.fr

Keyword(s): Land, hydrology, river, cryosphere, mountain range, glacier, lake, snow, ice, Switzerland, Italy, Alps



[3D Layerstack](#)

Fig. 1 - S1 (03.09.2018) - vv,vh,vv colour composite - Witenwasserenstock peak lies in Saint-Gotthard Massif near the Italian border. [2D view](#) [3D view](#)



At 3082m, this tripoint lies next to the 3190m-high Pizzo Rotondo, the summit of Saint-Gotthard Massif, itself a part of the Lepontine Alps.

Fig. 2 - S2 (21.02.2019) - 11,8,2 colour composite - On its eastern flank, water enters the North Sea 670km north via the Reuss & the Rhine. [3D view](#)

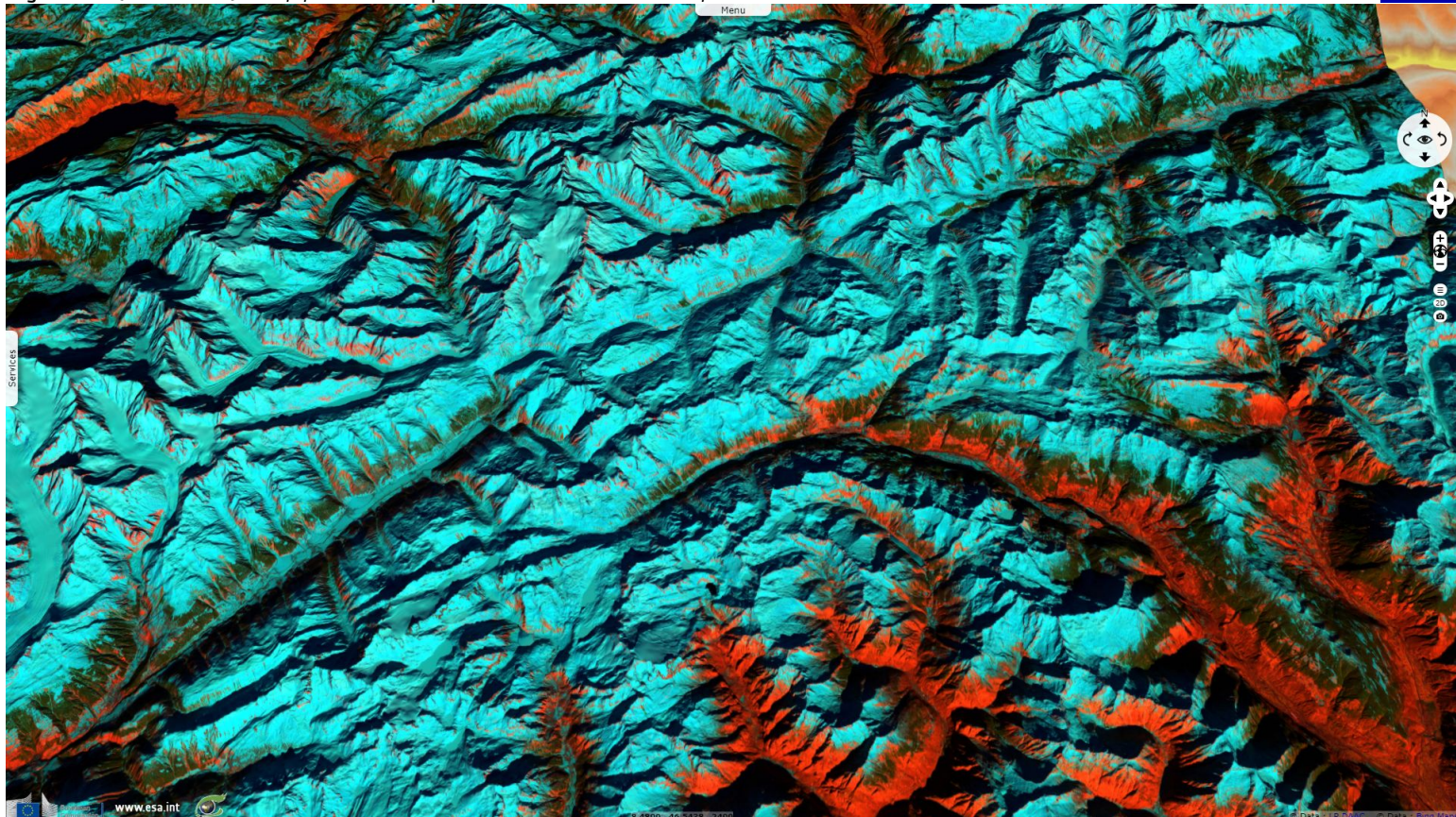


Fig. 3 - S1 (06.02.2019) - vv,vh,ndi(vh,vv) - On the west water flows in the Rhone, through Lake Lemman & into the Mediterranean 460km SW. [3D view](#)

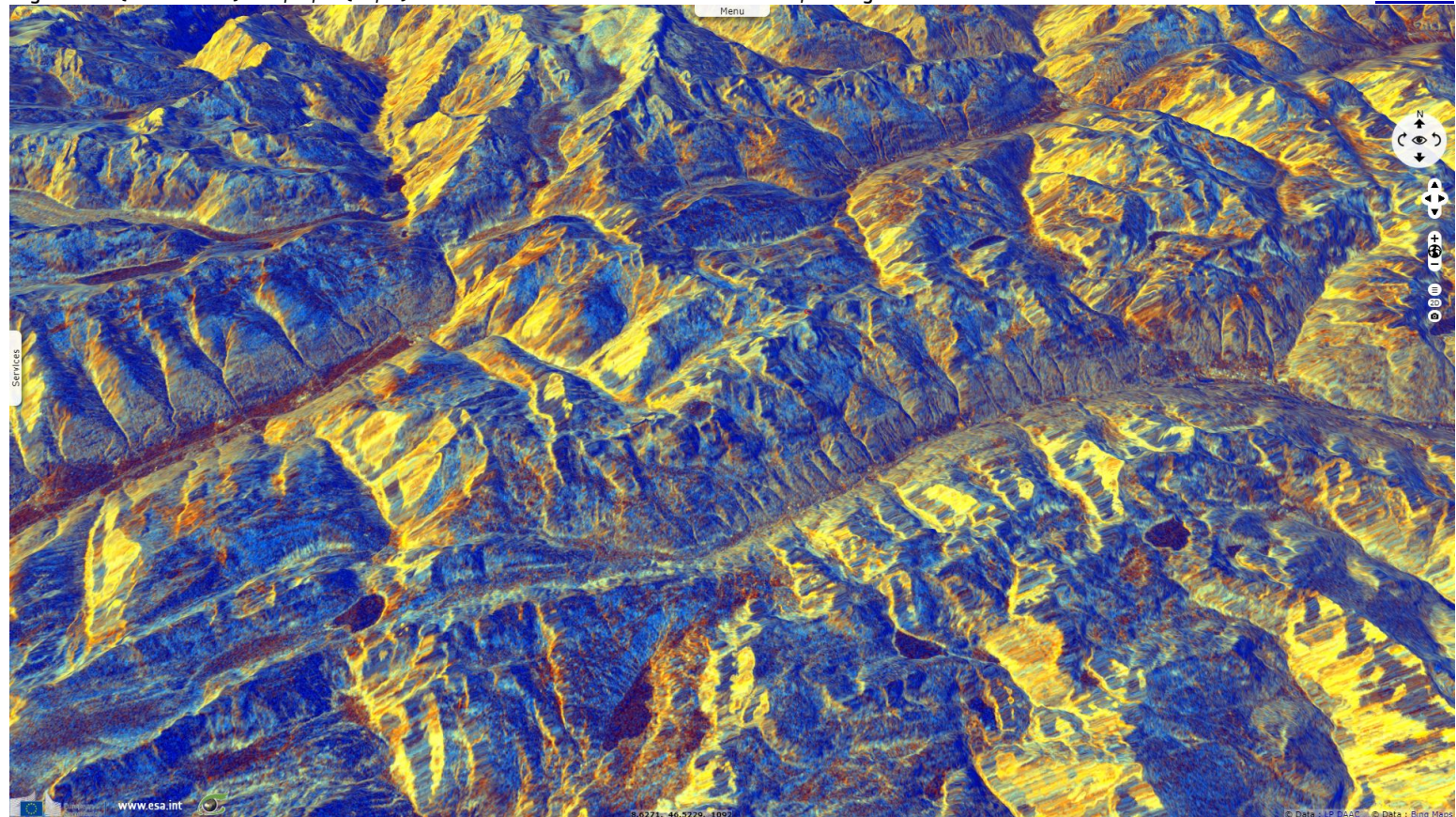
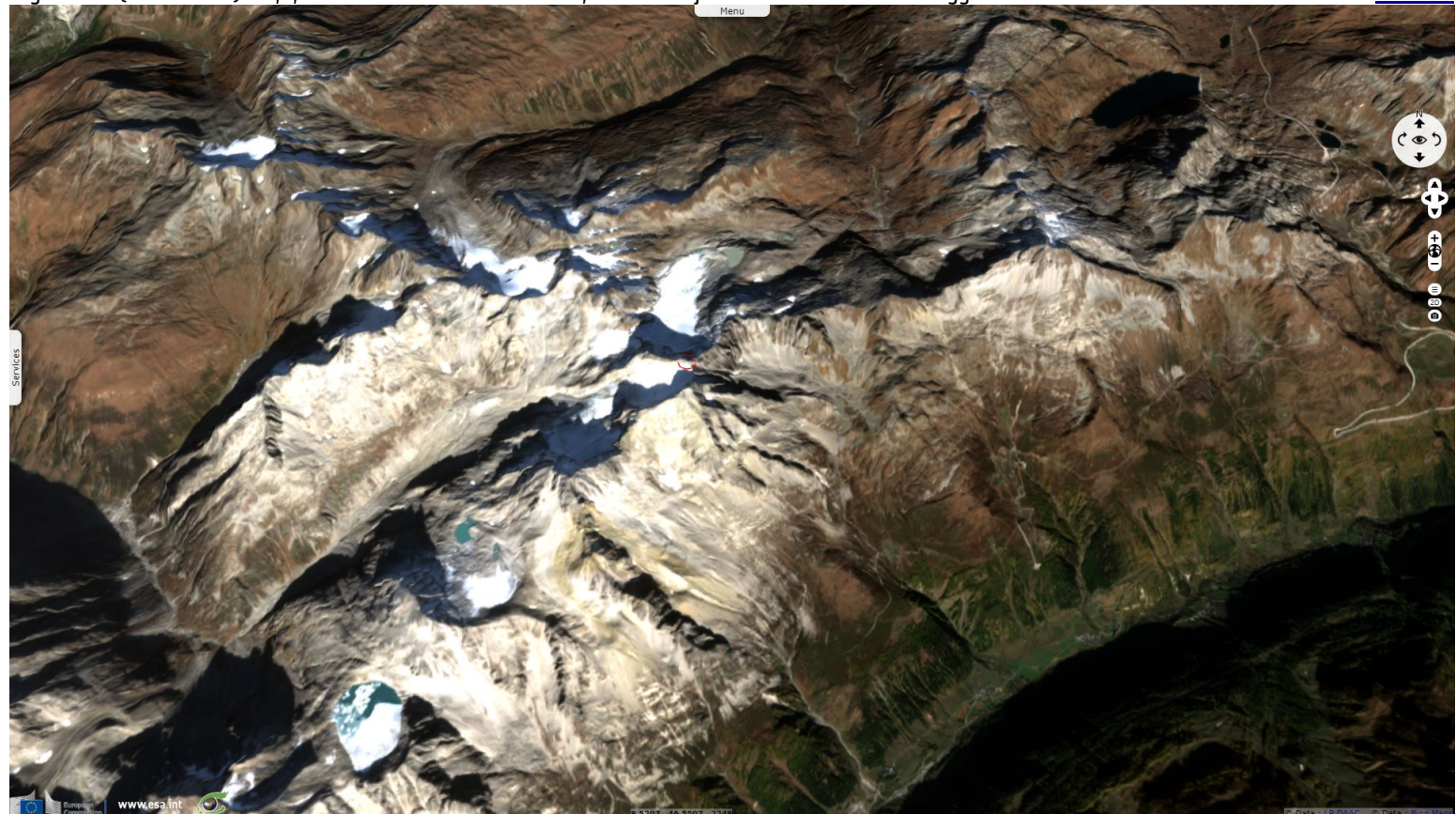


Fig. 4 - S2 (19.10.2018) - 4,3,2 natural colour - On the east, the Ticino joins the Po after Lake Maggiore & ends in the Adriatic 360km SE. [3D view](#)



*The views expressed herein can in no way be taken to reflect the official opinion of the European Space Agency or the European Union.
Contains modified Copernicus Sentinel data 2019, processed by VisioTerra.*

More on European Commission space:						
More on ESA:				S-1 website	S-2 website	S-3 website
More on Copernicus program:				SciHub portal	Cophub portal	Inthub portal
More on VisioTerra:				Sentinel Vision Portal	Envisat+ERS portal	Swarm+GOCE portal
					CryoSat portal	