

Malaysia closes its doors to foreign to-be-recycled waste

Sentinel-2 MSI acquired on 30 March 2016 at 03:25:52 UTC
Sentinel-1 CSAR IW acquired on 15 April 2016 at 22:55:29 UTC

Author(s): Sentinel Vision team, VisioTerra, France - svp@visioterra.fr

Keyword(s): Coastal, urban, port, infrastructures, resources, marine traffic, Malaysia, Malacca Strait

[2D Layerstack](#)

Fig. 1 - 15.04.2016 - vv,vh,vv colour composite - Kuala Lumpur, the capital of Malaysia, is bordered by patches of rainforest & mangrove. [2D view](#)

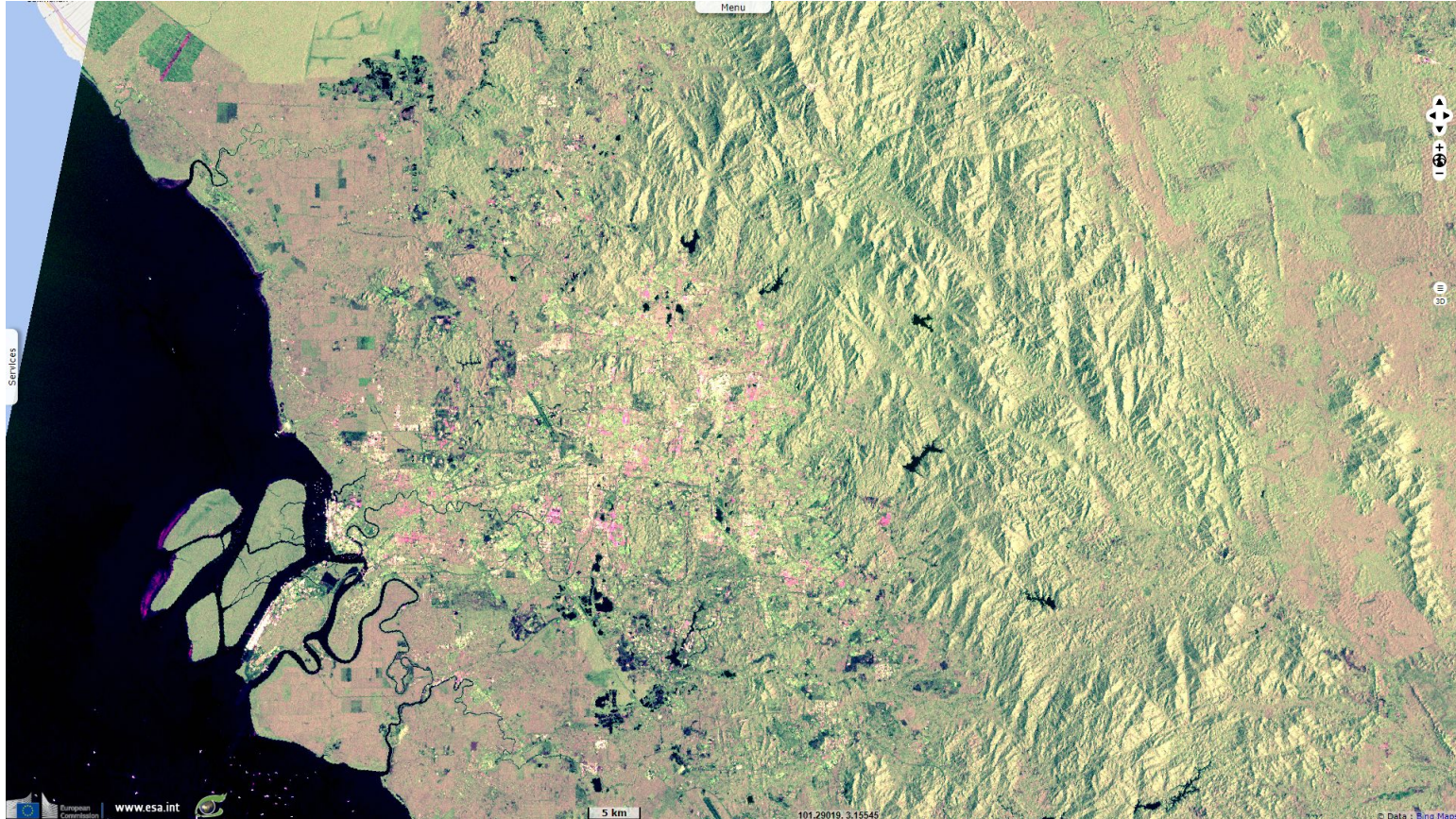


Fig. 2 - 30.03.2016 - 12,11,2 colour composite - Bordering Malacca Strait, Port Keland is the maritime door to Kuala Lumpur. [2D view](#)



Port Keland has grown hundredfold since 1940, reaching World's top 20; it benefits from Kuala Lumpur growth & the saturation of Singapour port.

Fig. 3 - 11,8,2 composite - Jenjarom factories (lower right) had become an alternative after China stopped importing recyclable waste in 2018 [2D view](#)



Fig. 4 - 4,3,2 natural colour - As Philippines, Malaysia decided to stop recycling foreign garbage & sent back several unemptied foreign ships. [2D view](#)



*The views expressed herein can in no way be taken to reflect the official opinion of the European Space Agency or the European Union.
Contains modified Copernicus Sentinel data 2019, processed by VisioTerra.*

More on European Commission space:						
More on ESA:				S-1 website	S-2 website	S-3 website
More on Copernicus program:				SciHub portal	Cophub portal	Inthub portal
More on VisioTerra:				Sentinel Vision Portal	Envisat+ERS portal	Swarm+GOCE portal
					CryoSat portal	