

Hunter Valley coal mines, New South Wales, Australia

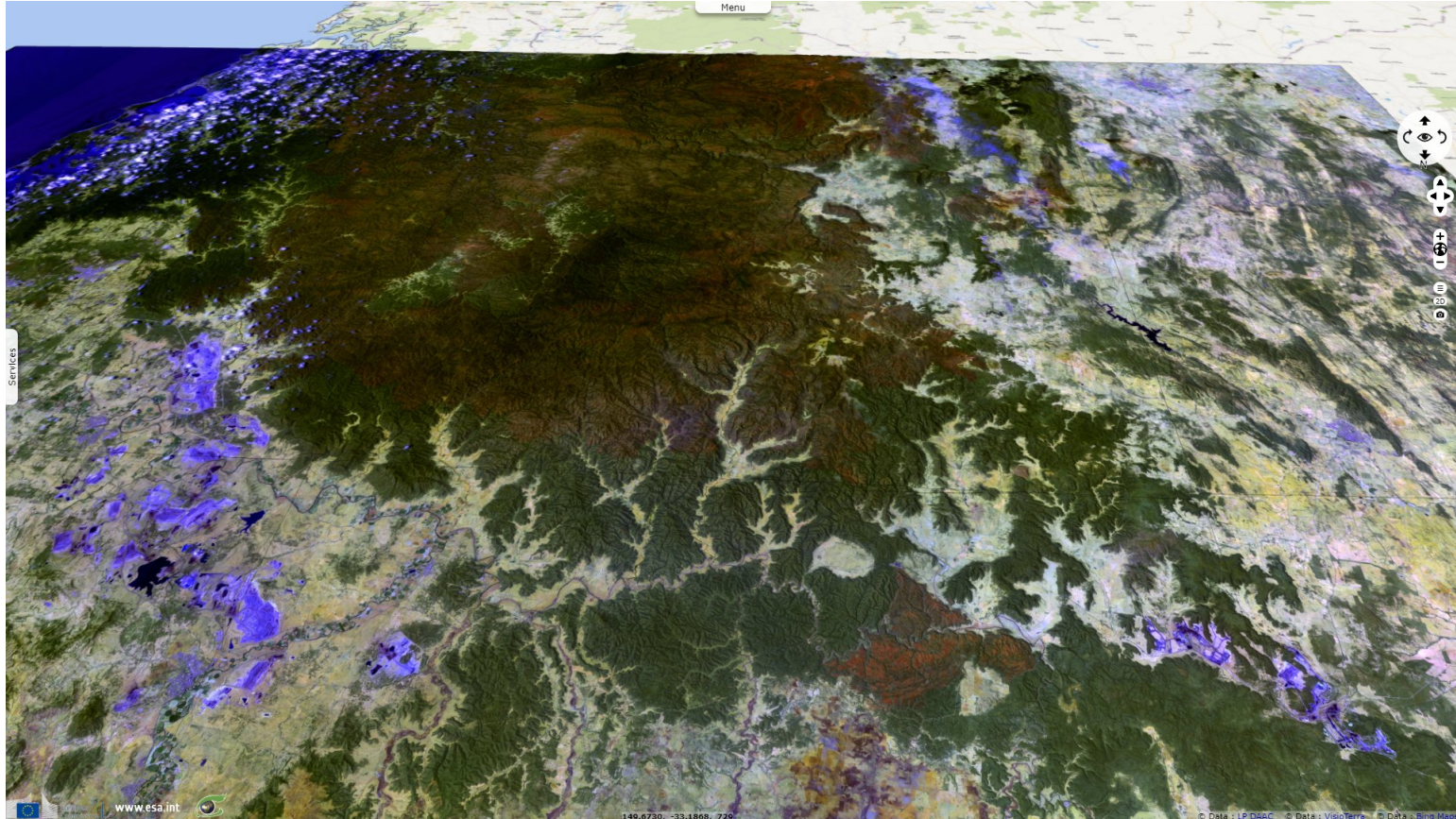
Sentinel-2 MSI acquired on 03 August 2019 at 00:02:51 UTC
Sentinel-1 CSAR IW acquired on 12, 24 December 2019 & 05 January 2020 at 19:15:26 UTC
Sentinel-2 MSI acquired on 10 January 2020 at 00:02:31 UTC

Author(s): Sentinel Vision team, VisioTerra, France - syp@visioterra.fr

Keyword(s): Natural resources, mine, land, emergency, climate change, global warming, greenhouse gas emissions, fossil energies, heatwave, drought, wildfire, bush fire, Australia.

[3D Layerstack](#)

Fig. 1 - S2 (03.08.2019) - 12,11,2 natural colour - South looking view of Sidney region where fire rages, coal mines show in indigo. [2D view](#) [3D view](#)



While exposed to climate change, Australia is one of the biggest per capita greenhouse gas emitters with ~85% of its electricity produced by coal.

Fig. 2 - S1 (mean of 12 & 24.12.2019, 05.01.2020) - vv,vh,ndi(vh,vv) colour composite - Australia is the World's 2nd coal exporter. [3D view](#)

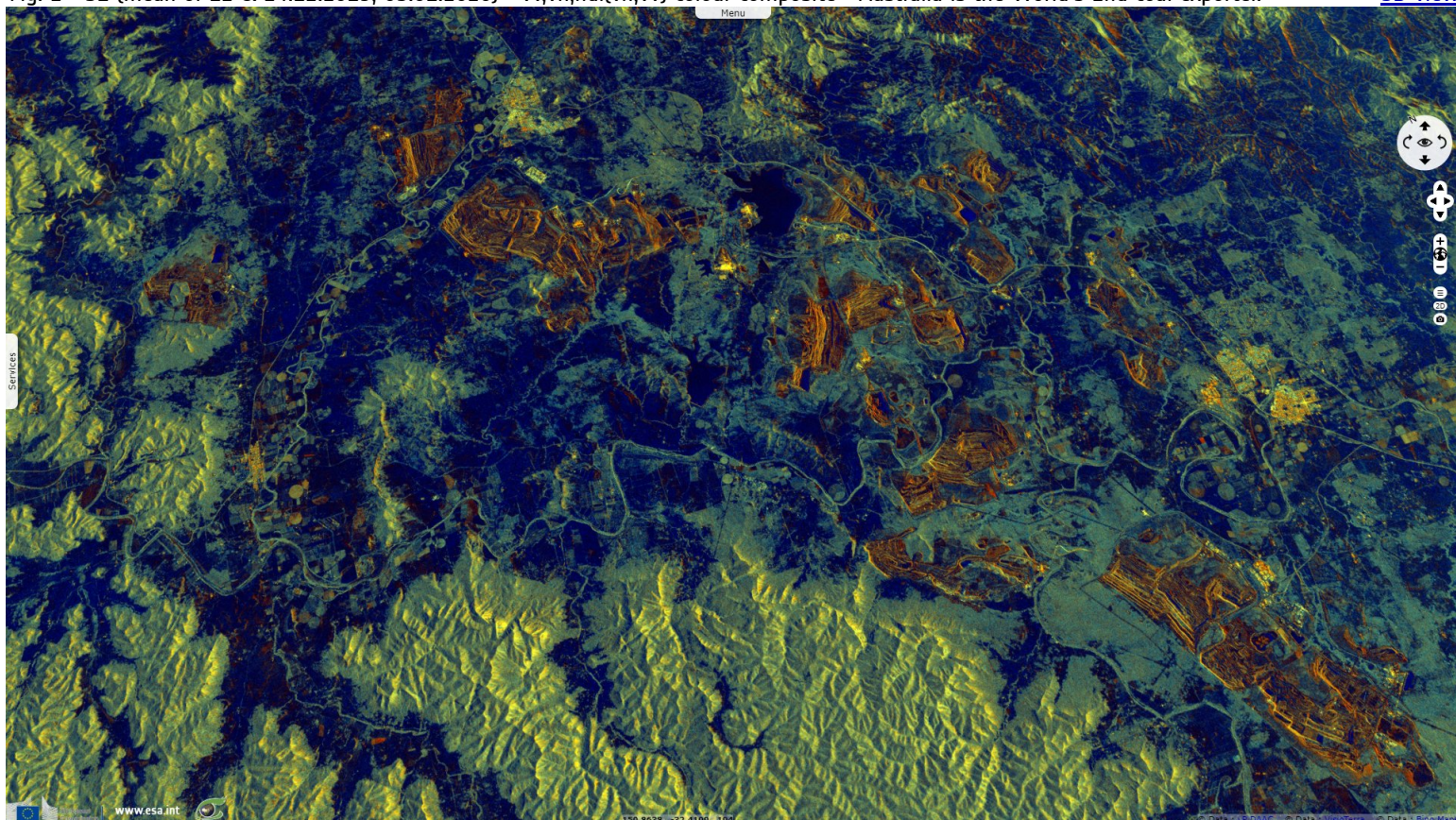


Fig. 3 - Australia recently approved the subsidised construction in Queensland of what could be the biggest coal mine in the World. [3D view](#)

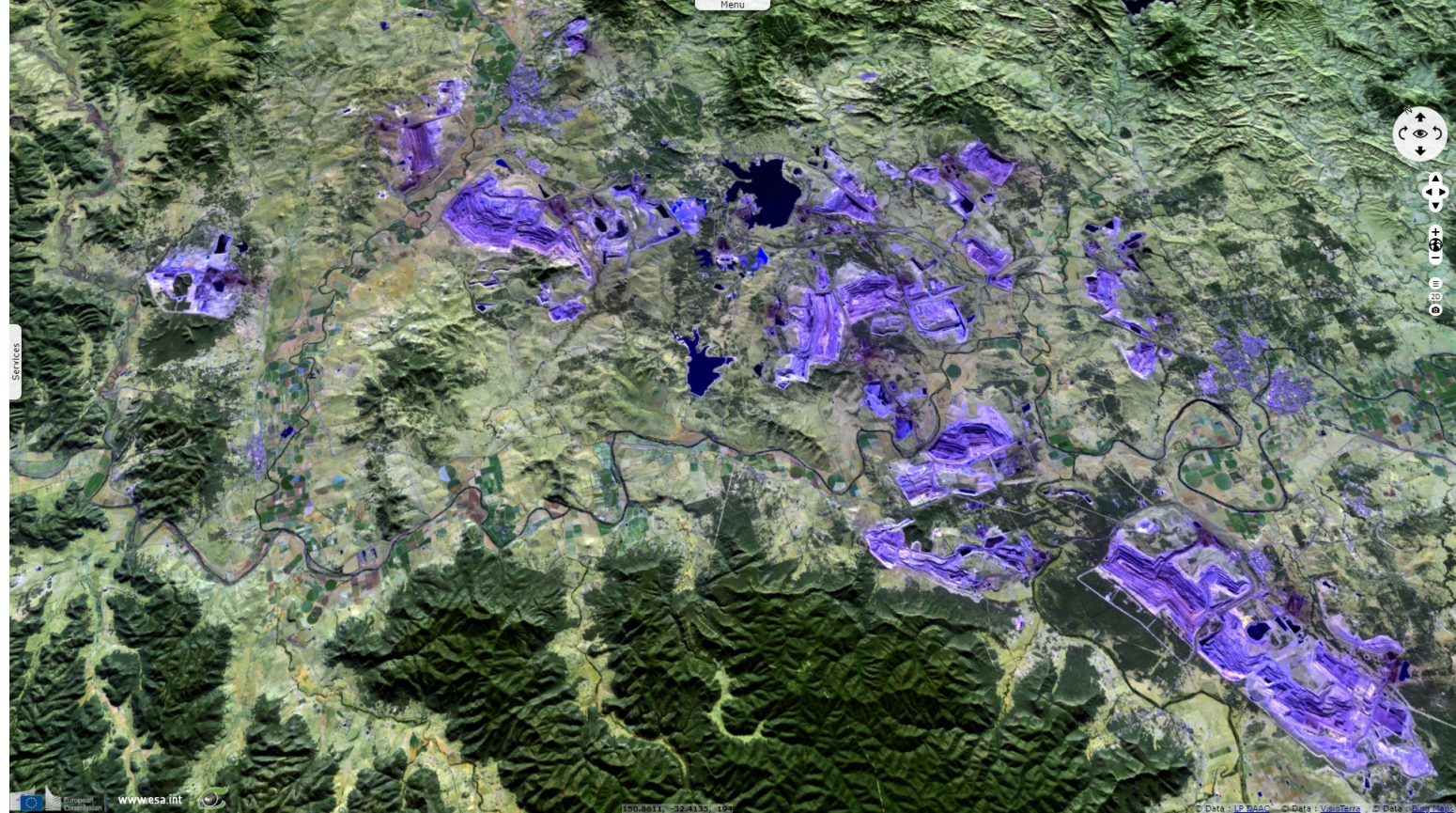
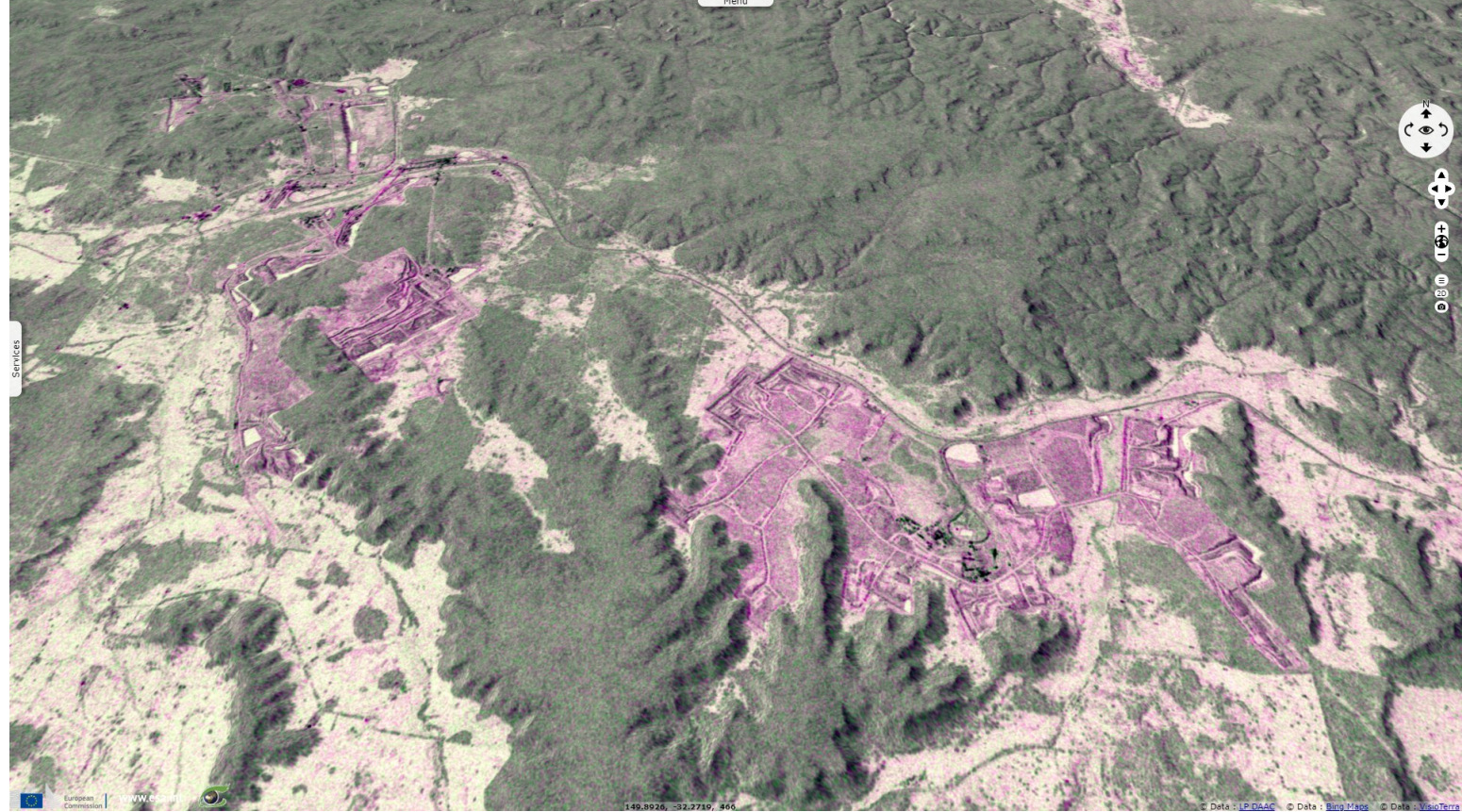














Fig. 4 - neg(vh,vv,vh) - Australia is a wealthy & sunny country but diplomats have listed it among the big-6 resisting bolder action at COP25. [3D view](#)



*The views expressed herein can in no way be taken to reflect the official opinion of the European Space Agency or the European Union.
Contains modified Copernicus Sentinel data 2019, processed by VisioTerra.*

More on European Commission space:						
More on ESA:				S-1 website	S-2 website	S-3 website
More on Copernicus program:				SciHub portal	Cophub portal	Inthub portal
More on VisioTerra:				Sentinel Vision Portal	Envisat+ERS portal	Swarm+GOCE portal
				CryoSat portal		