

# Ceuta & Melilla, Spanish exclaves in Africa

Sentinel-2 MSI acquired on 28 June 2017 at 10:56:51 UTC  
Sentinel-1 CSAR IW acquired on 23 January 2018 at 06:19:08 UTC  
Sentinel-1 CSAR IW acquired on 16 February 2018 at 06:19:08 UTC  
Sentinel-1 CSAR IW acquired on 07 April 2019 at 06:11:03 UTC  
Sentinel-2 MSI acquired on 01 September 2019 at 10:56:19 UTC

Author(s): Sentinel Vision team, VisioTerra, France - [svp@visioterra.fr](mailto:svp@visioterra.fr)

Keyword(s): Coastal, security, border, Spain, Morocco



[2D Layerstack](#)

Fig. 1 - S1 (2018.01.23; 2018.02.04; 2018.02.16) - Ceuta & Melilla are two Spanish exclaves bordered by Morocco & the Mediterranean Sea. [3D view](#)

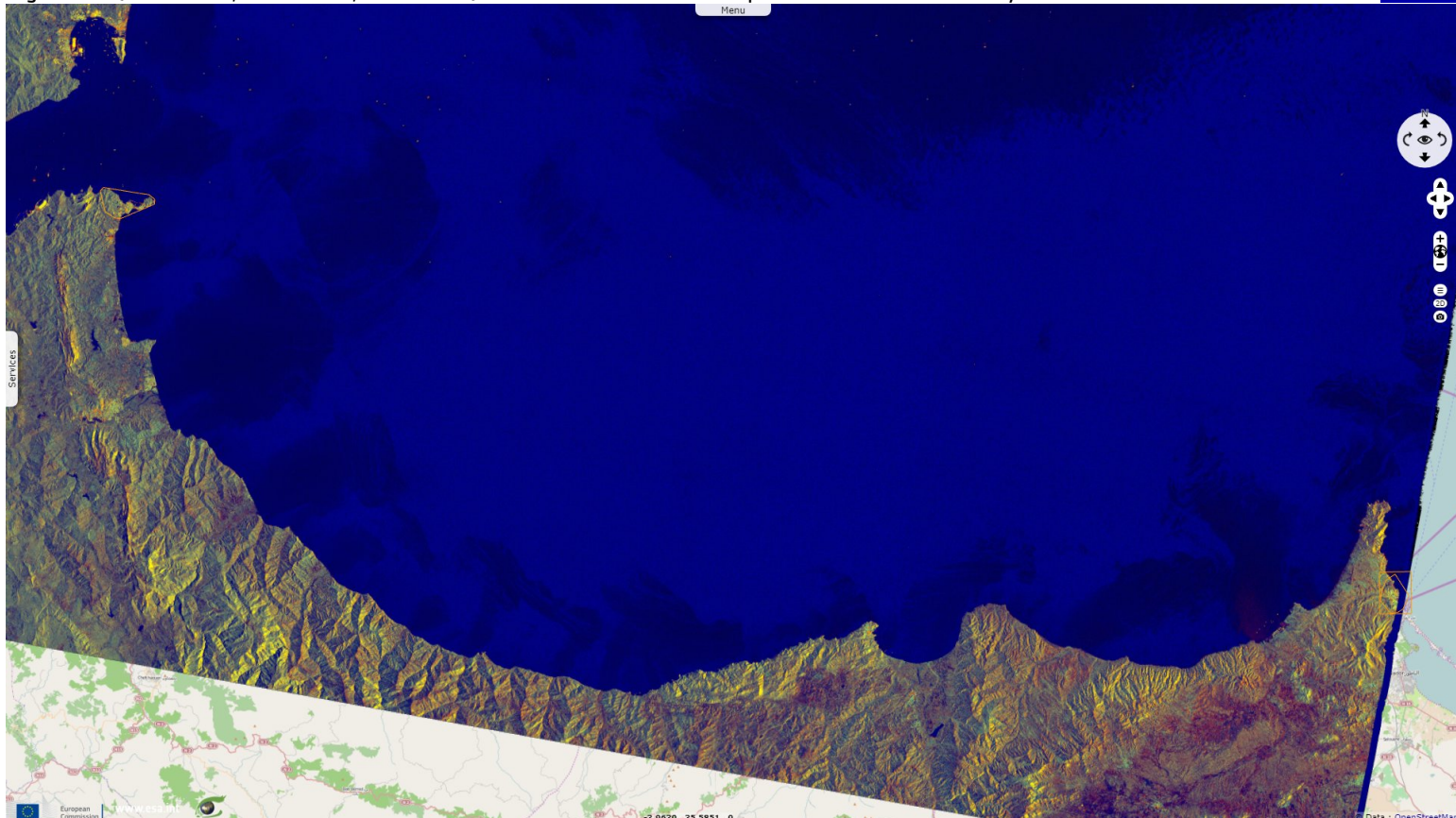
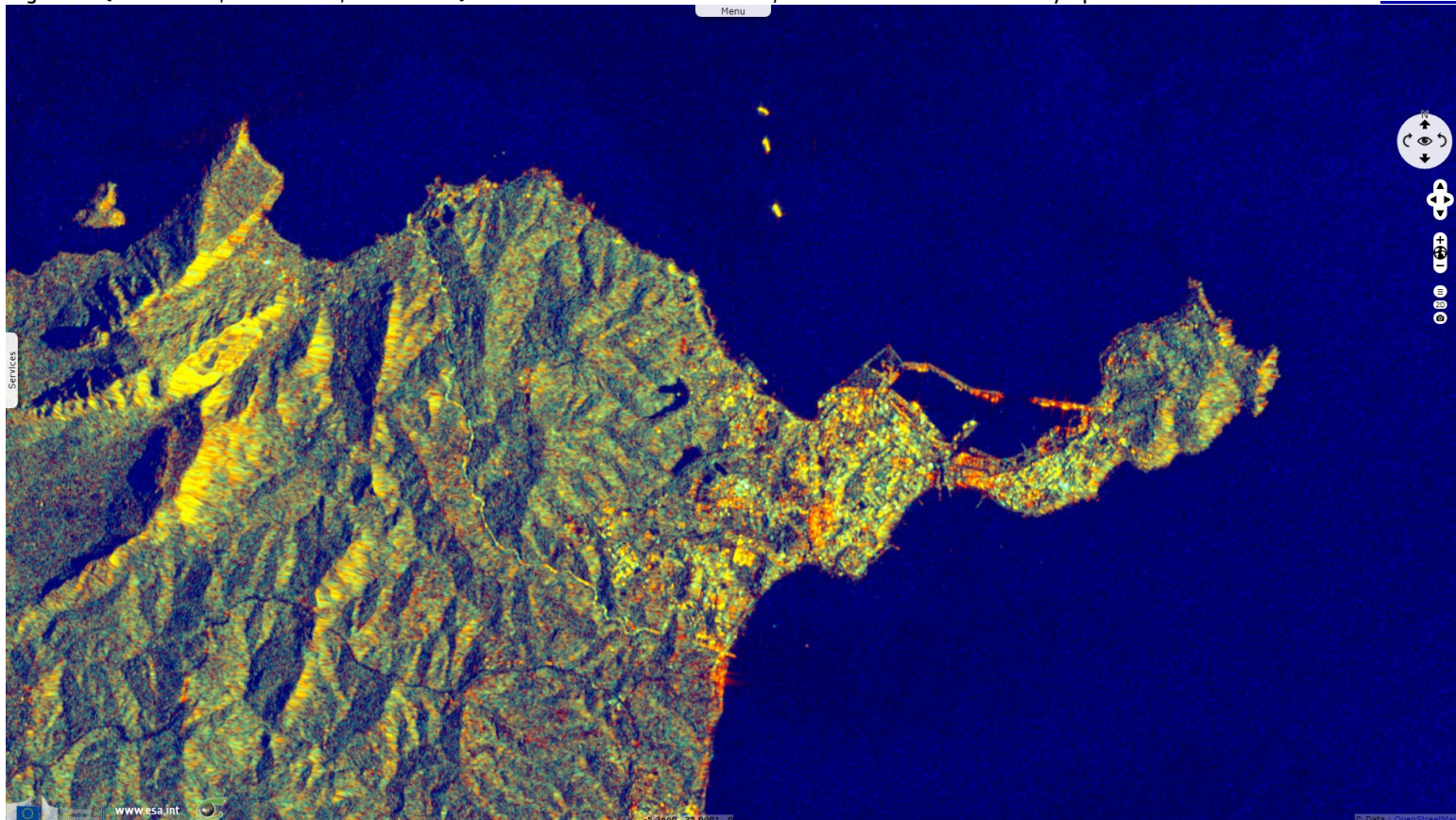


Fig. 2 - 1 (2018.01.23; 2018.02.04; 2018.02.16) - Ceuta lies in front of Gibraltar, a British exclave bordered by Spain. [3D view](#)



A Portuguese possession in 1415, it became a Spanish city from 1580 and remained such.

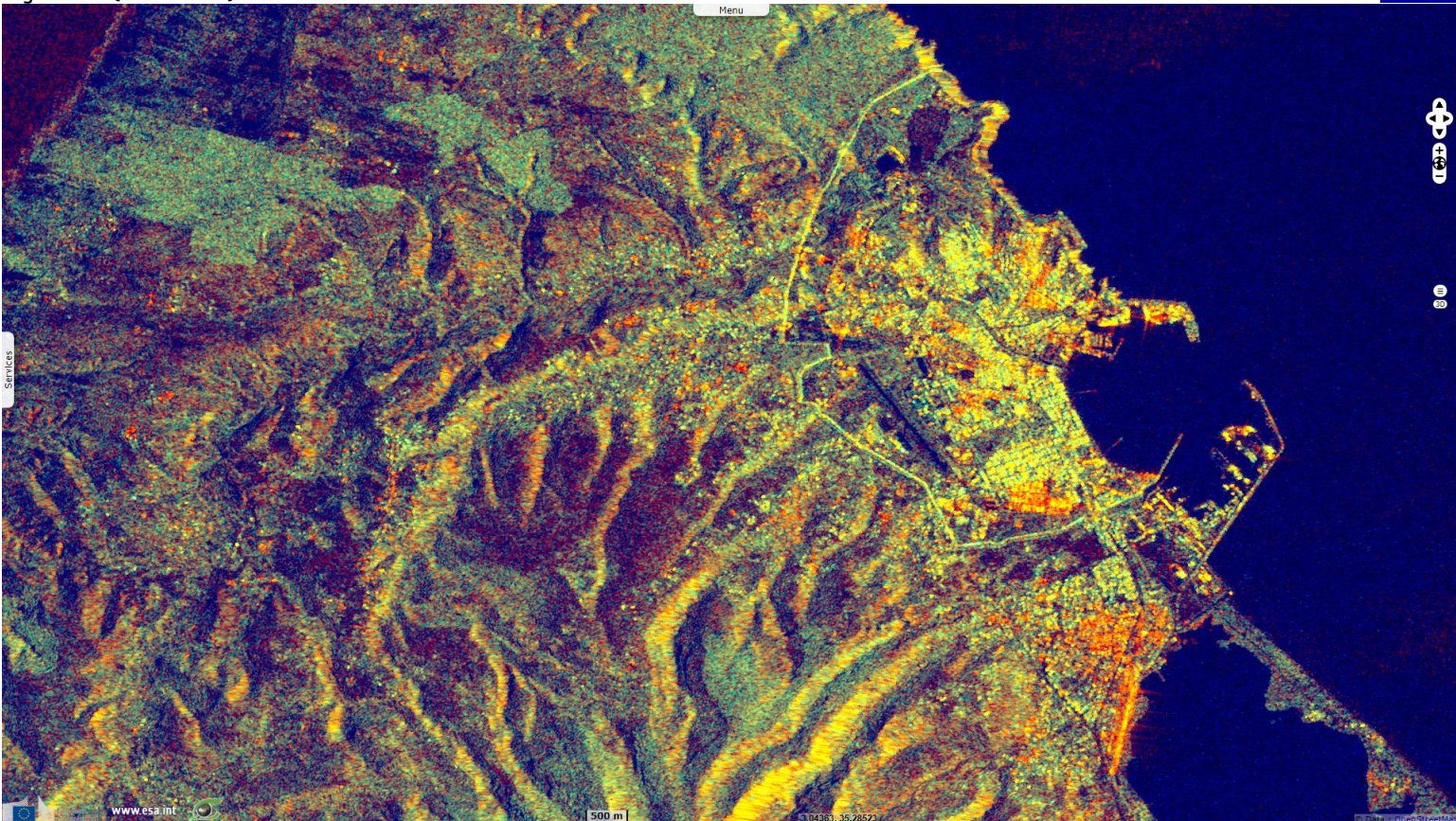
Fig. 3 - S2 (01.09.2019) - This 18.5 km<sup>2</sup> territory is home to 85 000 people, it is surrounded by a wall to reduce immigration.

[3D view](#)



Fig. 4 - S1 (07.04.2019) - Melilla is another exclave around north-east Morocco.

[2D view](#)



The double 6m high fence is well visible around the city. It has an area of 12.3 km<sup>2</sup> and 86 000 inhabitants.













Fig. 5 - S2 (28.06.2017) - The distinct architecture of Melilla is distinct from the neighbouring Moroccan cities.

[2D view](#)



It is a Spanish city since 1497, 5 years after the end of the Reconquista. In a symmetric fashion, Granada in Spain remained part of Al-Andalus from 719 to 1492. While it is 150 km away from mainland Spain, 75% of the inhabitants feel "only Spanish", while 25% feel as Spanish as Melillense according to a 2014 survey.

*The views expressed herein can in no way be taken to reflect the official opinion of the European Space Agency or the European Union.  
Contains modified Copernicus Sentinel data 2021, processed by VisioTerra.*

|                                    |   |   |   |  |                                    |  |
|------------------------------------|---|---|---|--|------------------------------------|--|
| More on European Commission space: |  |  |  |  |                                    |  |
| More on ESA:                       |  |  |  | <a href="#">S-1 website</a>            | <a href="#">S-2 website</a>        | <a href="#">S-3 website</a>                                      |
| More on Copernicus program:        |  |  |  | <a href="#">SciHub portal</a>          | <a href="#">COP Hub portal</a>     | <a href="#">In Hub portal</a> <a href="#">Col Hub portal</a>     |
| More on VisioTerra:                |  |  |  | <a href="#">Sentinel Vision Portal</a> | <a href="#">Envisat+ERS portal</a> | <a href="#">Swarm+GOCE portal</a> <a href="#">CryoSat portal</a> |