

Tekesi, the largest bagua-shaped city, China

Sentinel-2 MSI acquired on 03 August 2016 at 05:26:52 UTC
Sentinel-1 CSAR IW acquired on 07 March 2019 at 12:26:17 UTC
Sentinel-1 CSAR IW acquired on 19 March 2019 at 12:26:17 UTC
Sentinel-1 CSAR IW acquired on 31 March 2019 at 12:26:18 UTC

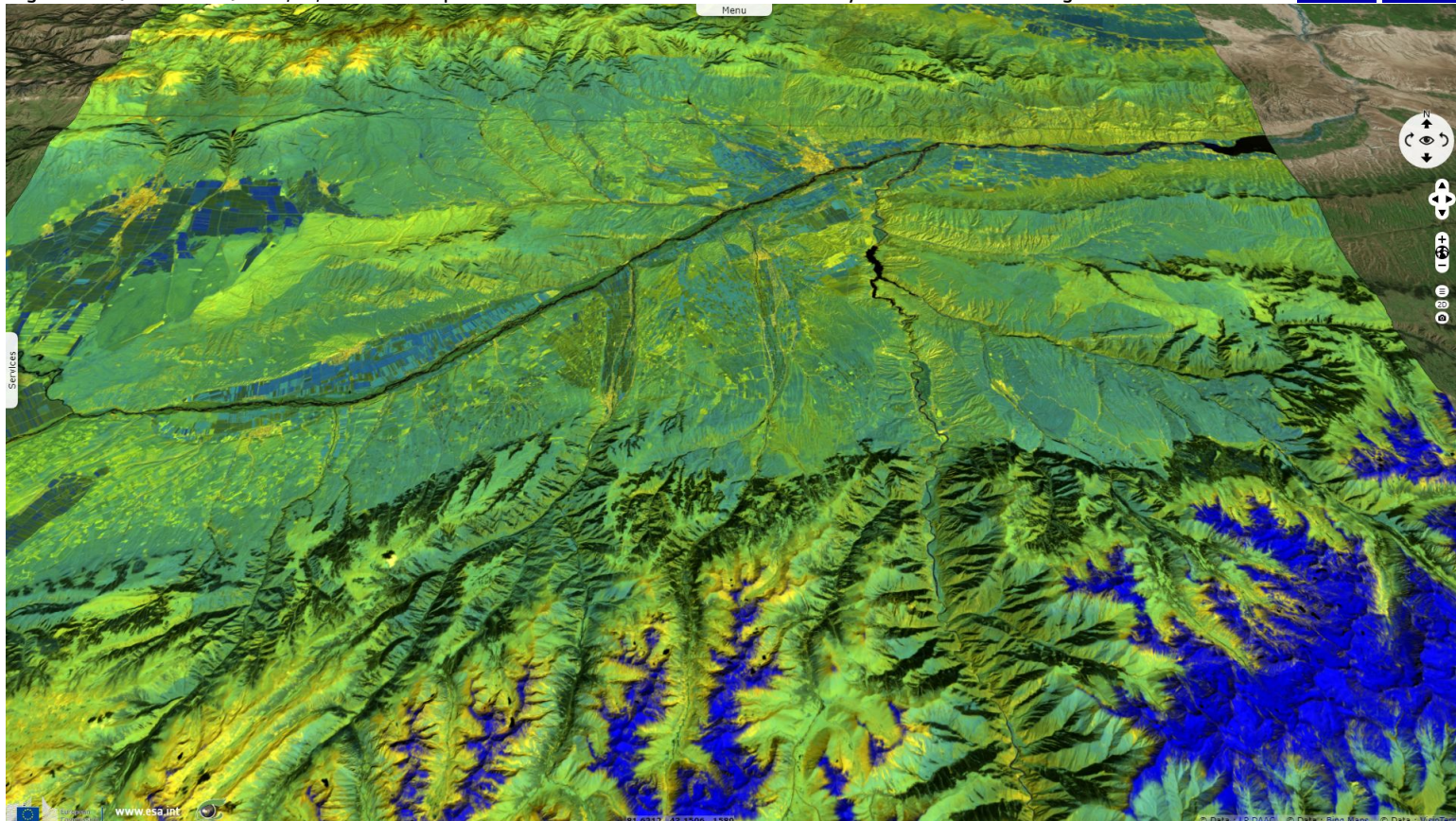
Author(s): Sentinel Vision team, VisioTerra, France - svp@visioterra.fr

Keyword(s): Urban planning, land, mountain range, valley, Tian Shan, China

[2D Layerstack](#)

Fig. 1 - S2 (03.08.2016) - 12,11,8 colour composite - Tekesi lies in the Tekes river valley of the Tian Shan range.

[2D view](#) [3D view](#)



It is situated along an ancient silk road in the Chinese Xinjiang Uyghur Autonomous Region, close to Kazakhstan and Kyrgyzstan.

Fig. 2 - S1 (07, 19 & 31.03.2019) - vv,vh,vv colour composite - Tekesi is located halfway between Issyk Kul Lake & Turpan depression.

[3D view](#)

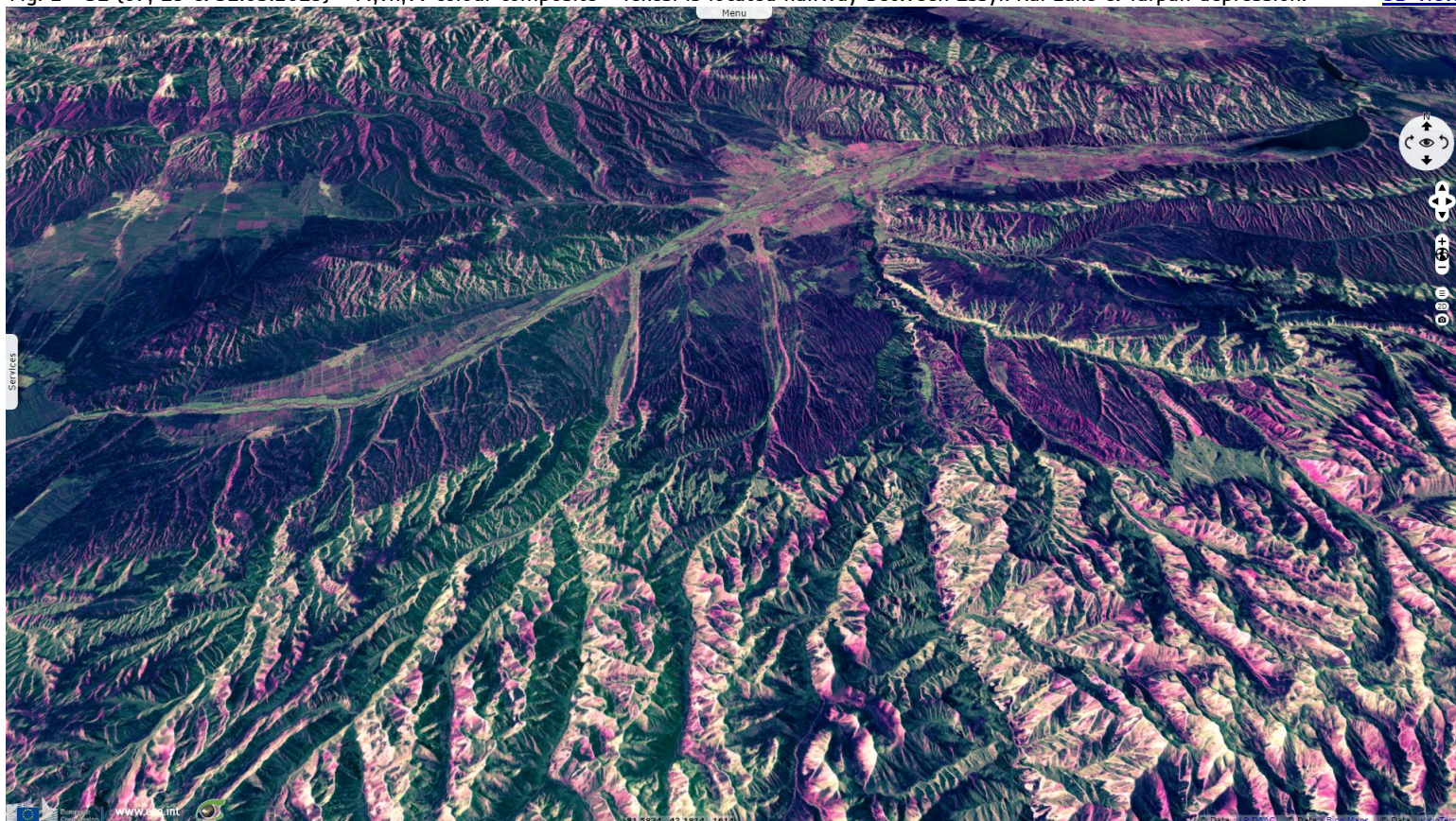


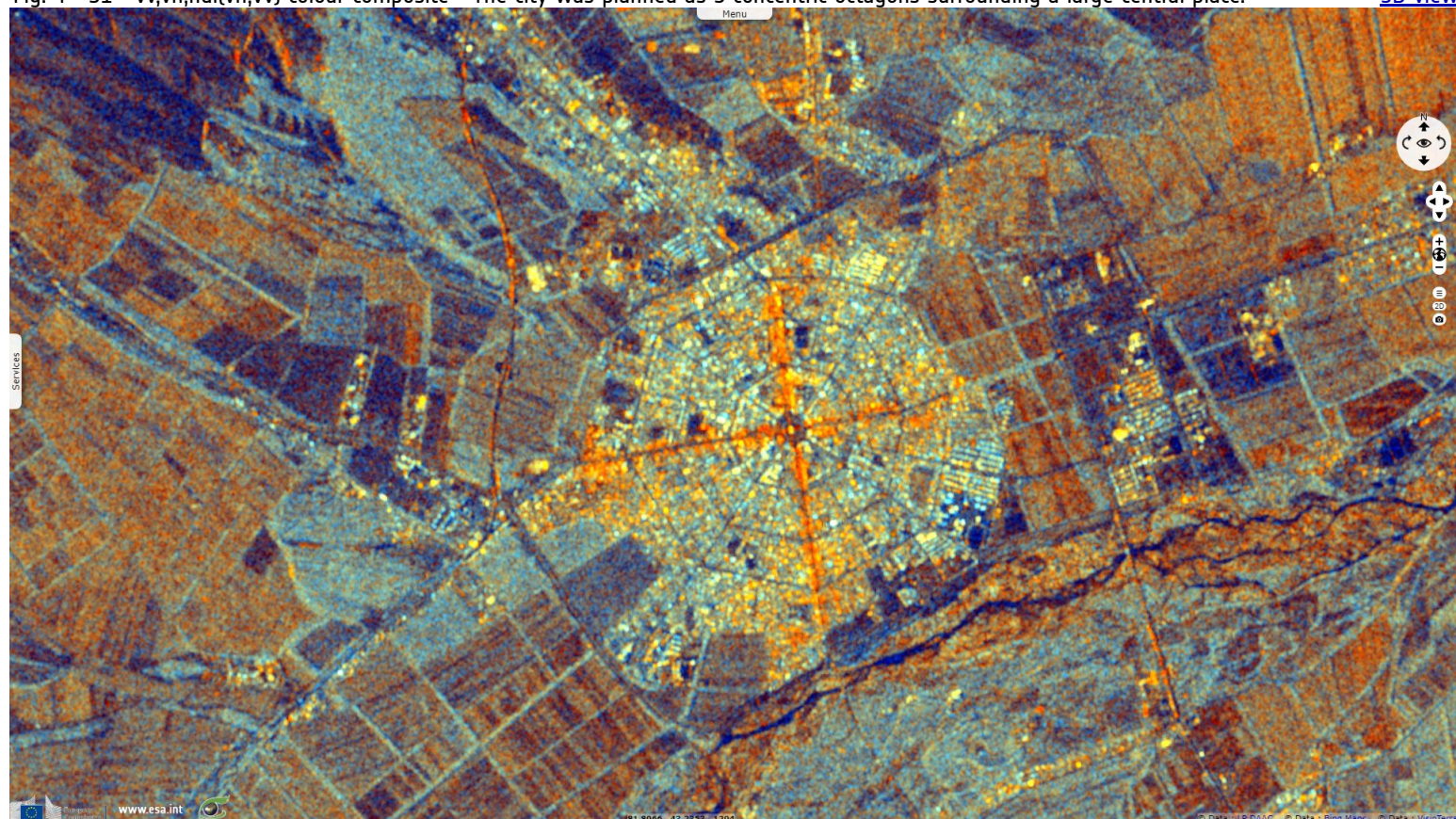
Fig. 3 - S2 - 4,3,2 natural colour - Tekesi is known for its bagua shape, a taoist symbol related to the ying and yang concepts.

[3D view](#)



Fig. 4 - S1 - vv,vh,ndi(vh,vv) colour composite - The city was planned as 3 concentric octagons surrounding a large central place.

[3D view](#)



*The views expressed herein can in no way be taken to reflect the official opinion of the European Space Agency or the European Union.
Contains modified Copernicus Sentinel data 2019, processed by VisioTerra.*

More on European Commission space:						
More on ESA:				S-1 website	S-2 website	S-3 website
More on Copernicus program:				SciHub portal	Cophub portal	Inthub portal
More on VisioTerra:				Sentinel Vision Portal	Envisat+ERS portal	Swarm+GOCE portal
					CryoSat portal	