

# Philippsburg nuclear plant pulled down, Germany

Sentinel-2 MSI acquired on 19 April 2020 at 10:25:49 UTC  
Sentinel-1 CSAR IW acquired on 11 May 2020 at 05:34:34 UTC  
Sentinel-1 CSAR IW acquired on 17 May 2020 at 05:34:01 UTC  
Sentinel-2 MSI acquired on 19 May 2020 at 10:25:59 UTC

Author(s): Sentinel Vision team, VisioTerra, France - [svp@visioterra.fr](mailto:svp@visioterra.fr)

Keyword(s): Infrastructure, energy, nuclear power plant, climate change, Germany



[2D Layerstack](#)

Fig. 1 - S2 (19.04.2020) - Philippsburg nuclear power plant lies near Karlsruhe in Bade-Wurtemberg, within the Rhine Rift Valley.

[2D view](#)



Fig. 2 - 19.05.2020 - Started in 1979, it has generated 355 billion TWh; 5 incidents were reported between 2001 & 2006.

[2D view](#) [2D animation](#)



Following Fukushima Daiichi nuclear disaster, Germany's politicians decided in 2011 that all 17 reactors in operation would be shut down by 2022.



Fig. 3 - S1 - Reactor 1 was decommissioned in 2011, reactor 2 on 31.12.2019, the two cooling towers were pulled down on 14 May 2020. [2D view](#)

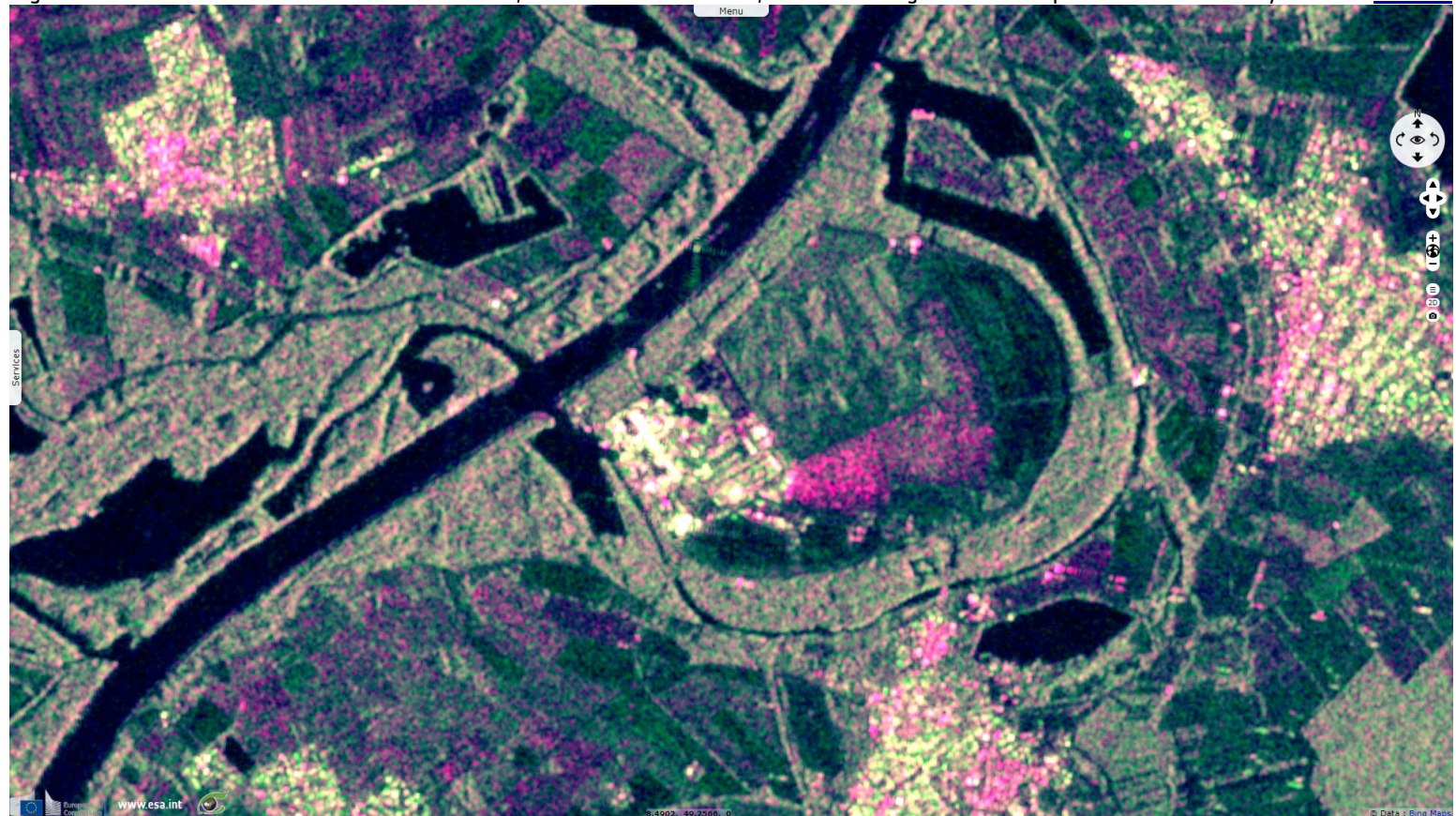
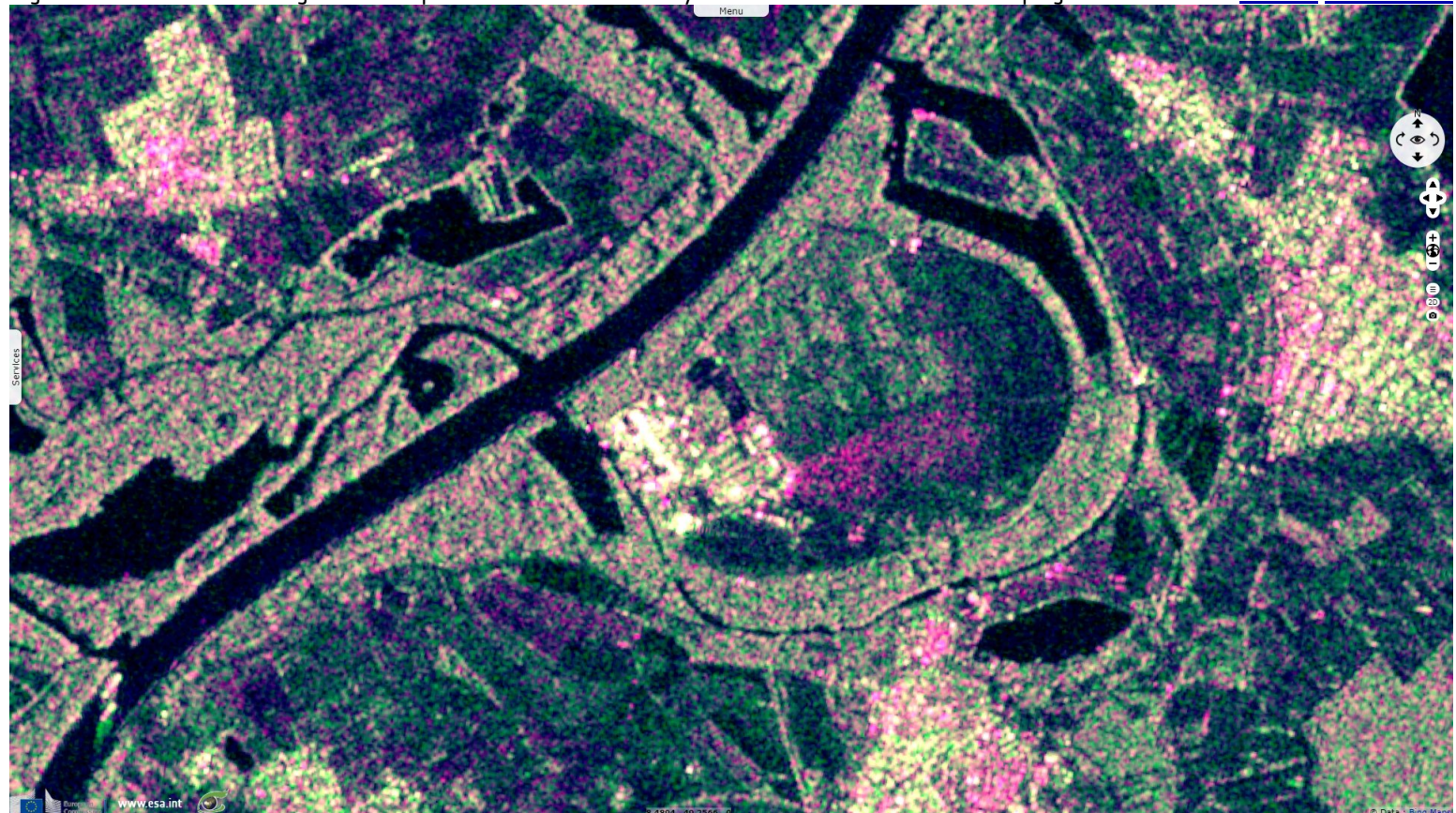














Fig. 4 - 17.05.2020 - Coal & lignite make up 35% of German electricity. The end of its reliance on coal is programmed for 2038. [2D view](#) [2D animation](#)



*The views expressed herein can in no way be taken to reflect the official opinion of the European Space Agency or the European Union.  
Contains modified Copernicus Sentinel data 2019, processed by VisioTerra.*

More on European Commission space:						
More on ESA:				<a href="#">S-1 website</a>	<a href="#">S-2 website</a>	<a href="#">S-3 website</a>
More on Copernicus program:				<a href="#">SciHub portal</a>	<a href="#">Cophub portal</a>	<a href="#">Inthub portal</a>
More on VisioTerra:				<a href="#">Sentinel Vision Portal</a>	<a href="#">Envisat+ERS portal</a>	<a href="#">Swarm+GOCE portal</a>
				<a href="#">CryoSat portal</a>		