

# Marine and coastal operations for Southern Africa

Sentinel-2 MSI acquired on 07 June 2018 at 07:16:21 UTC  
Sentinel-2 MSI acquired on 18 September 2018 at 07:26:11 UTC

...  
Sentinel-3 OLCI FR acquired on 15 July 2020 from 07:27:08 to 08:28:40 UTC  
Sentinel-3 SLSTR RBT & OLCI WFR acquired on 22 September 2021 from 07:36:27 to 08:18:47 UTC

Author(s): Sentinel Vision team, VisioTerra, France - [svp@visioterra.fr](mailto:svp@visioterra.fr)

Keyword(s): Water colour, biodiversity, mangrove, lagoon, fishing, upwelling, Angola, Namibia, RSA, Mozambique, Tanzania



[2D Layerstack](#)

Fig. 1 - OLCI WFR (mean 04.09.2021-30.11.2021) - A powerful upwelling, the Benguela current lies along the Atlantic coast of Austral Africa. [2D view](#)

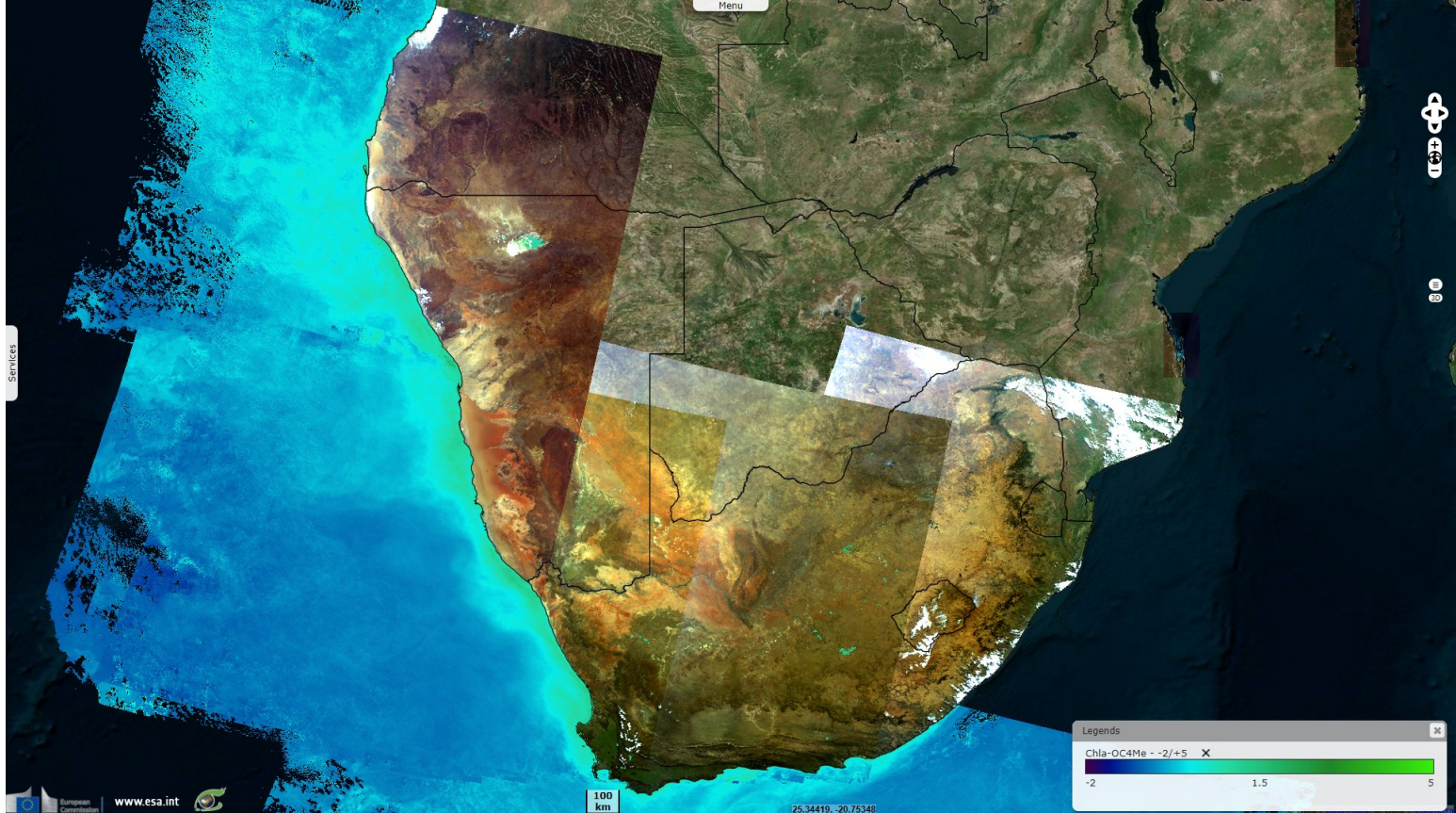


Fig. 2 - S3 OLCI (15-16.07.2020) - Plankton bloom along the coast of South Africa. [2D view](#)

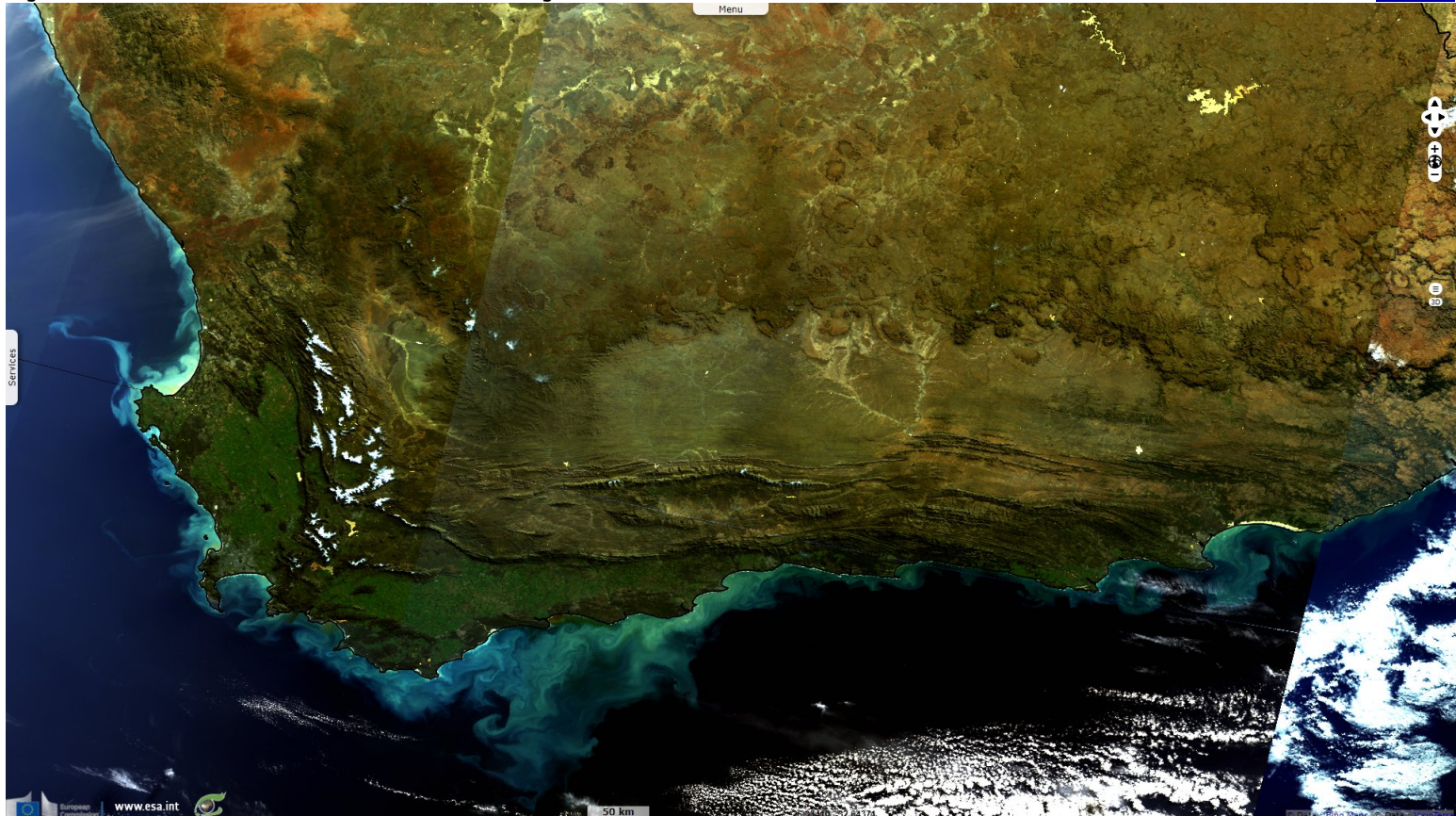


Fig. 3 - S3 SLSTR (22.09.2021) - The warm waters of the Indian Ocean meet the cold Benguela current.

[3D animation](#) [3D view](#)

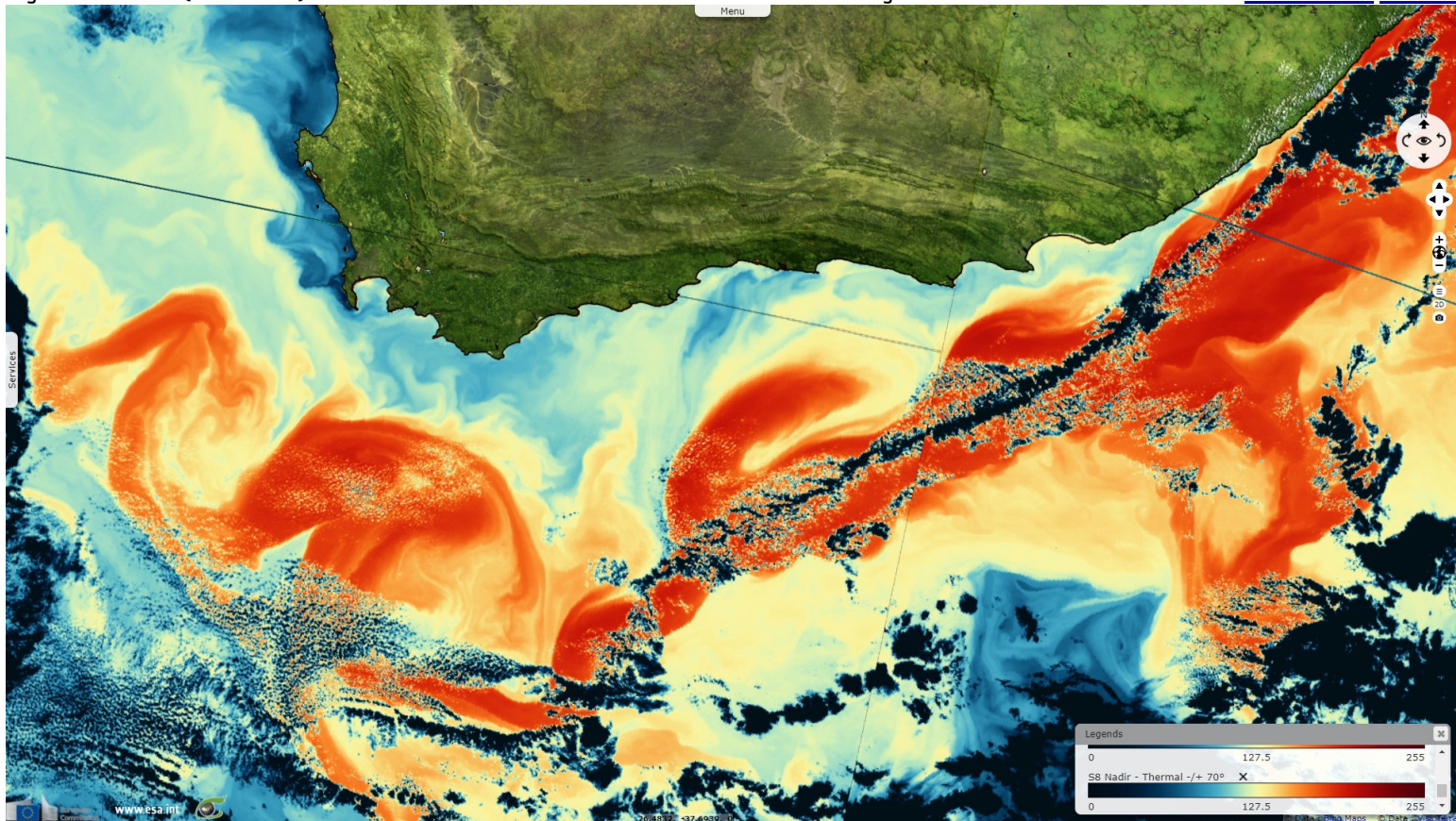


Fig. 4 - S3 OLCI WFR (22.09.2021) - The mixing of these waters is very productive in phytoplankton.

[3D view](#)

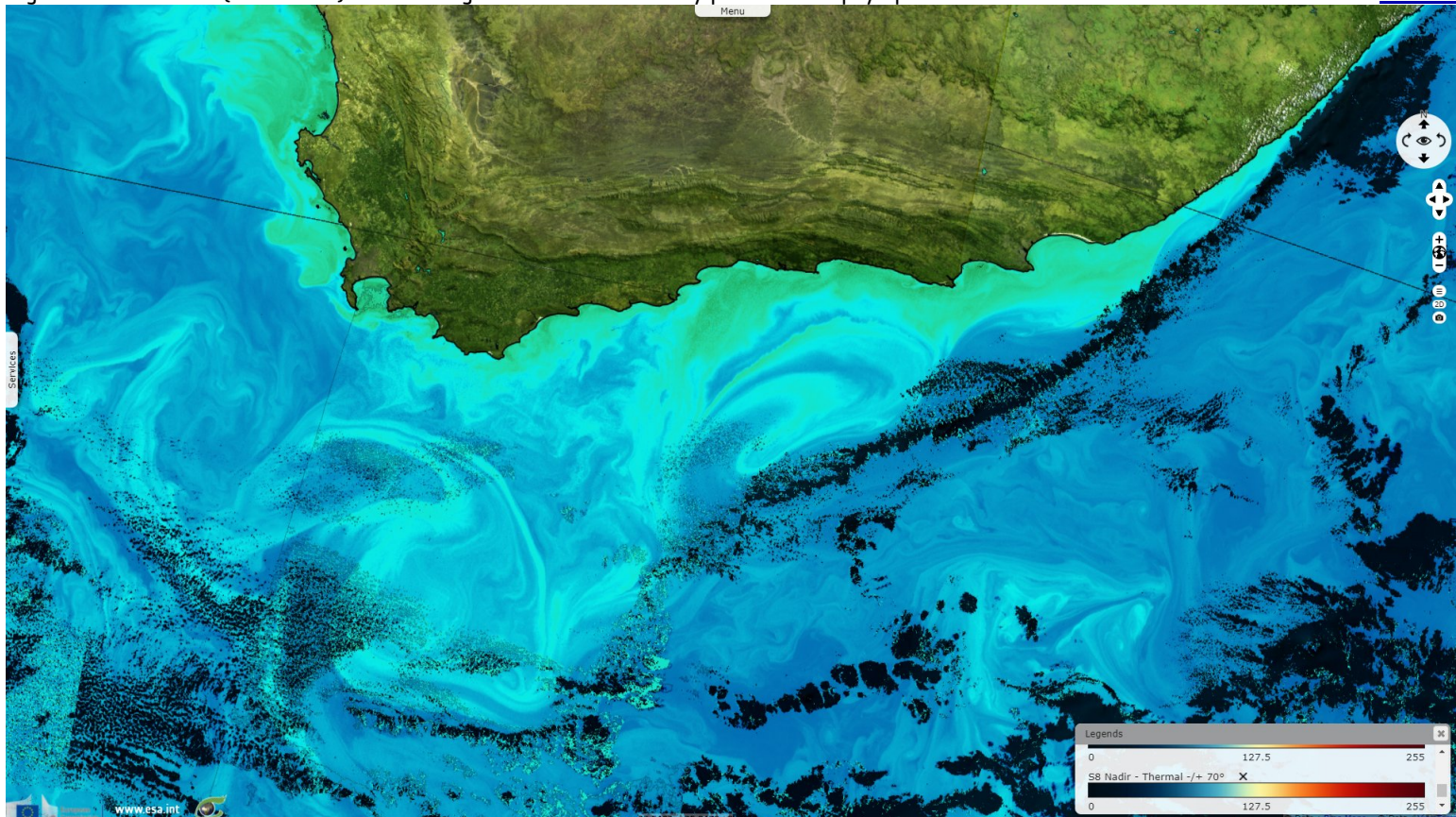


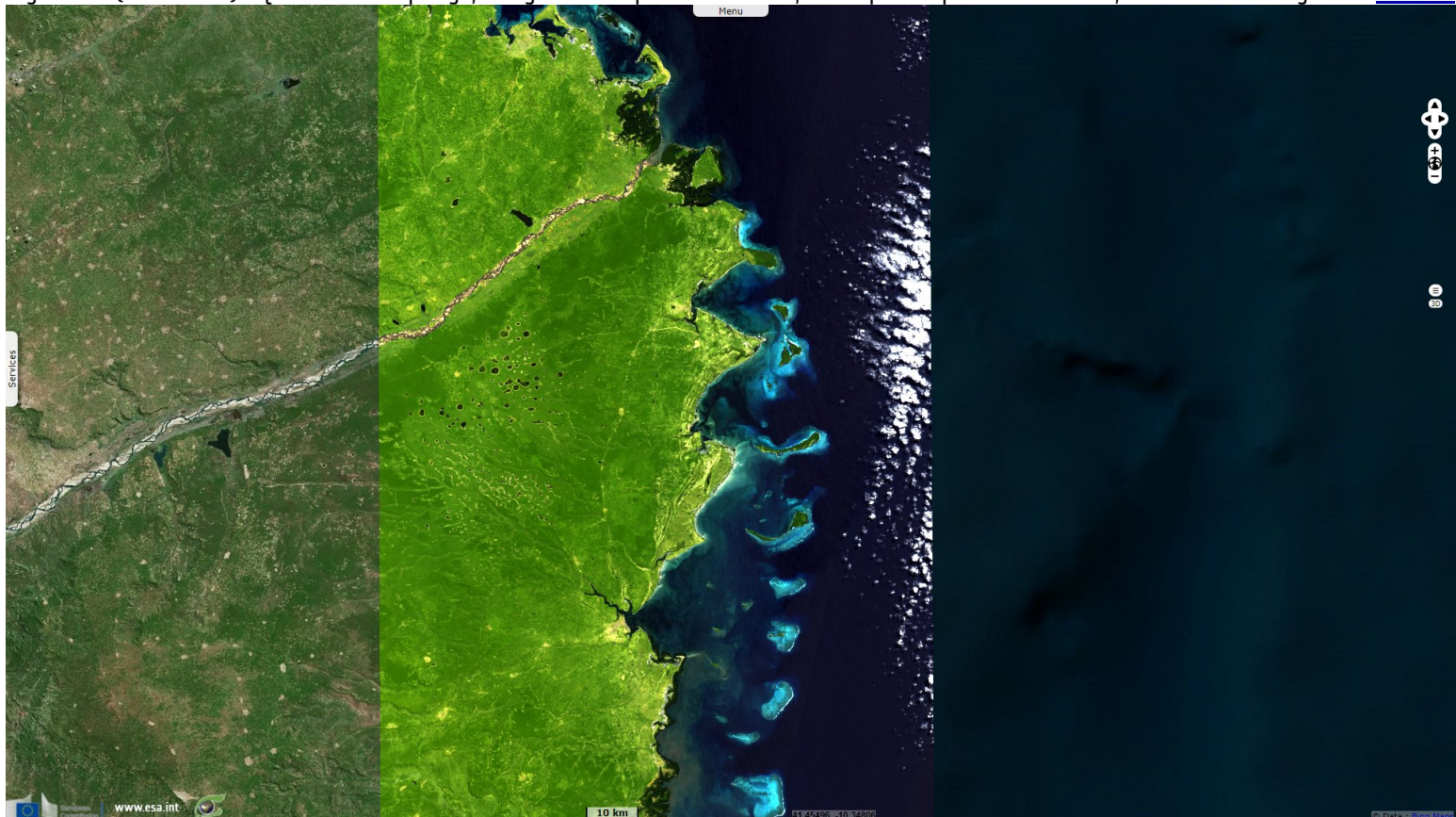
Fig. 5 - S2 (18.09.2018) - Shallow waters, dunes and sandbar around Bazaruto Archipelago, Mozambique.

[2D view](#)



Fig. 6 - S2 (07.06.2018) - Quirimbas archipelago, along Mozambique's north coast, encompasses pristine sand bars, coral reefs & mangroves.

[2D view](#)



*The views expressed herein can in no way be taken to reflect the official opinion of the European Space Agency or the European Union.  
Contains modified Copernicus Sentinel data 2021, processed by VisioTerra.*

More on European Commission space:						
More on ESA:				<a href="#">S-1 website</a>	<a href="#">S-2 website</a>	<a href="#">S-3 website</a>
More on Copernicus program:				<a href="#">SciHub portal</a>	<a href="#">Cophub portal</a>	<a href="#">Inhub portal</a>
More on VisioTerra:				<a href="#">Sentinel Vision Portal</a>	<a href="#">Envisat+ERS portal</a>	<a href="#">Swarm+GOCE portal</a>
						<a href="#">Colhub portal</a>
						<a href="#">CryoSat portal</a>