

A tailing dam fails at Williamson diamond mine, Tanzania

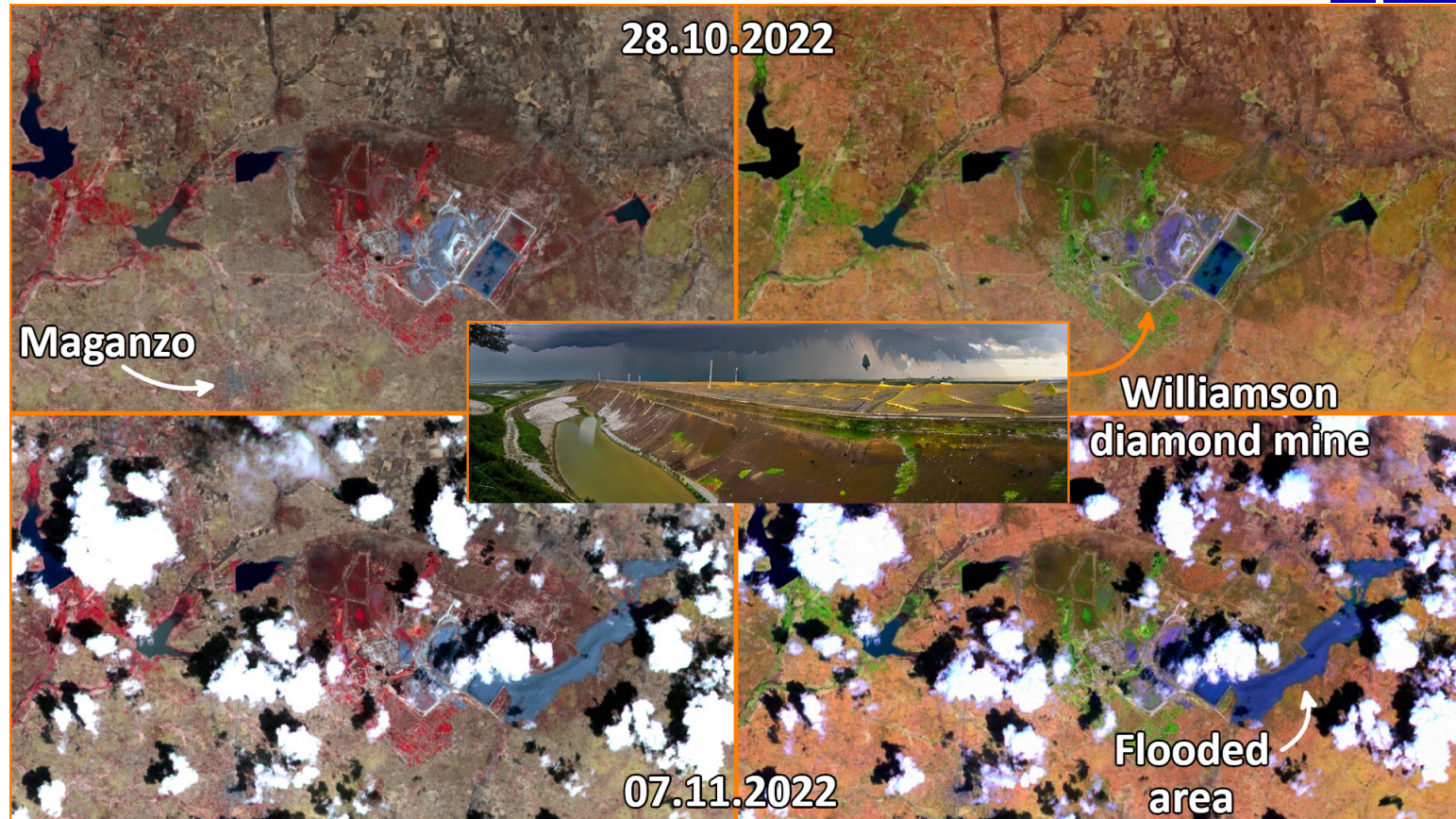
Sentinel-2 MSI acquired on 28 October 2022 at 07:50:09 UTC
Sentinel-2 MSI acquired on 07 November 2022 at 07:50:29 UTC

Author(s): Sentinel Vision team, VisioTerra, France - syp@visioterra.fr

Keyword(s): Emergency, flooding, tailing dam, diamond mine, open pit mine, natural resources, hydrology, Tanzania

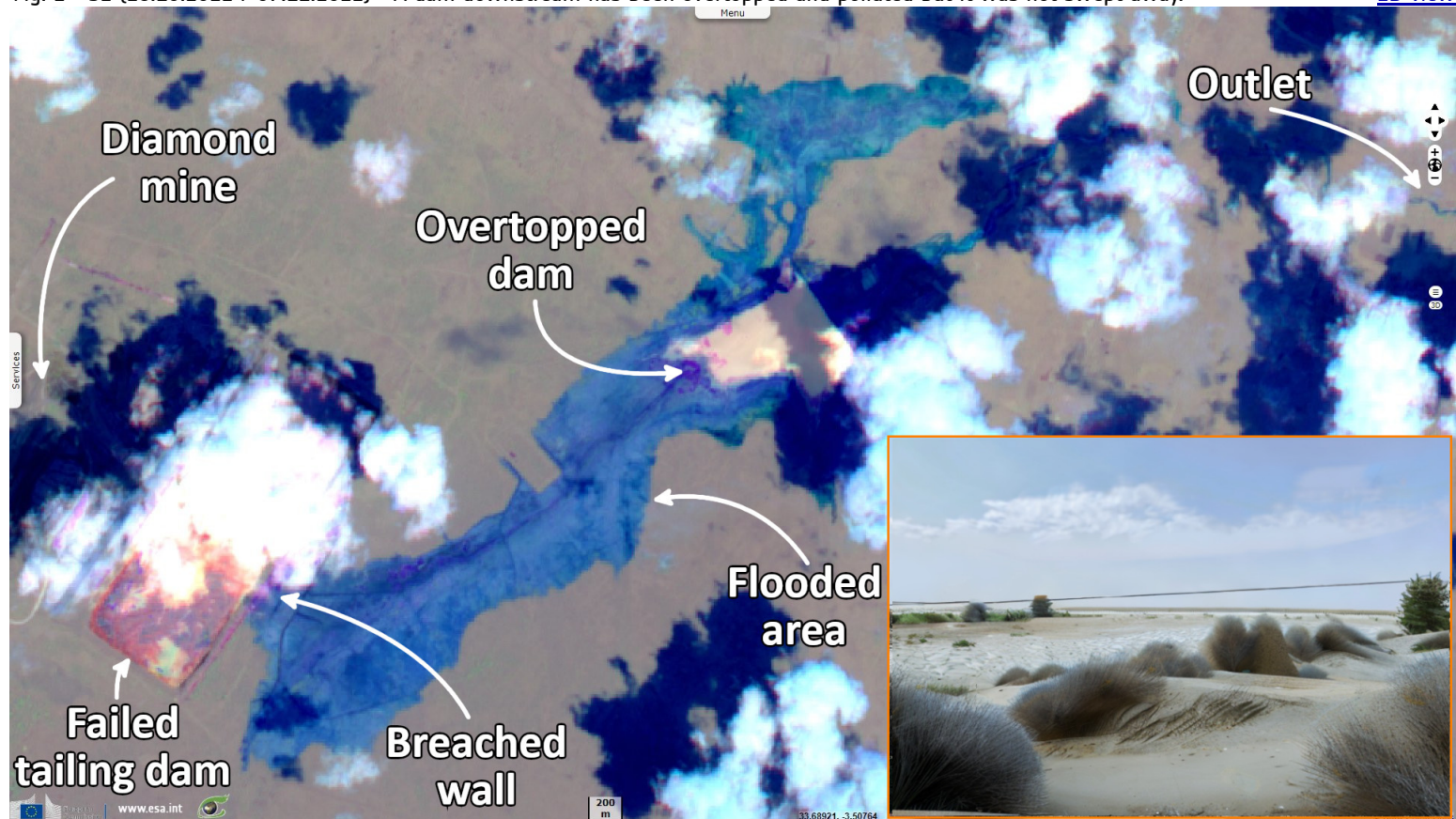
Fig. 1 - S2 (28.10.2022 / 07.11.2022) - A breach in a tailing dam caused a flooding at the largest diamond mine of Tanzania.

[3D view](#) [3D view](#) [3D view](#)
[view](#) [3D view](#)















The eastern wall of a tailings storage facility at its Williamson diamond mine, in Tanzania, was breached earlier on November 7, resulting in flooding away from the pit and extending into areas outside of the mine lease area. A total of 13 dwellings have been affected by the breach. Three minor injuries have been reported.

Fig. 2 - S2 (28.10.2022 / 07.11.2022) - A dam downstream has been overtopped and polluted but it was not swept away. [2D view](#)



The whitish plume is over 6 km long and has a maximum width of about 1.2 km. A very rough estimate has a surface area of the plume at about 4.7 km².

*The views expressed herein can in no way be taken to reflect the official opinion of the European Space Agency or the European Union.
Contains modified Copernicus Sentinel data 2022, processed by VisioTerra.*

More on European Commission space:						
More on ESA:				S-1 website	S-2 website	S-3 website
More on Copernicus program:				SciHub portal	CopHub portal	Inthub portal Colhub portal
More on VisioTerra:				Sentinel Vision Portal	Envisat+ERS portal	Swarm+GOCE portal CryoSat portal