

Water & natural resource management in Central Africa

Sentinel-2 MSI acquired on 03 December 2016 at 09:33:52 UTC
Sentinel-2 MSI acquired on 10 December 2016 at 09:24:02 UTC
Sentinel-1 CSAR IW acquired on 30 August 2019 from 04:30:14 to 04:30:39 UTC
Sentinel-1 CSAR IW acquired on 17 October 2020 from 04:33:51 to 04:35:06 UTC
Sentinel-2 MSI acquired on 04 August 2021 at 08:36:01 UTC

Author(s): Sentinel Vision team, VisioTerra, France - svp@visioterra.fr

Keyword(s): Hydrology, water resources, water quality, wetland, water height, transport, flooding, Congo, DRC, Cameroon, Chad



[2D Layerstack](#)

Fig. 1 - Back by GMES and Africa, the CICOS consortium works on the subject of Water and natural resource management in Central Africa. [2D view](#)



Fig. 2 - S2 (03 & 10.12.2016) - During winter, open water of Lake Chad remains mostly in Cameroon (south) and Chad (east).



Fig. 3 - S1 (17.10.2020) - View of the Sangha river, a tributary of the Congo river, during a flood event in the Republic of Congo.

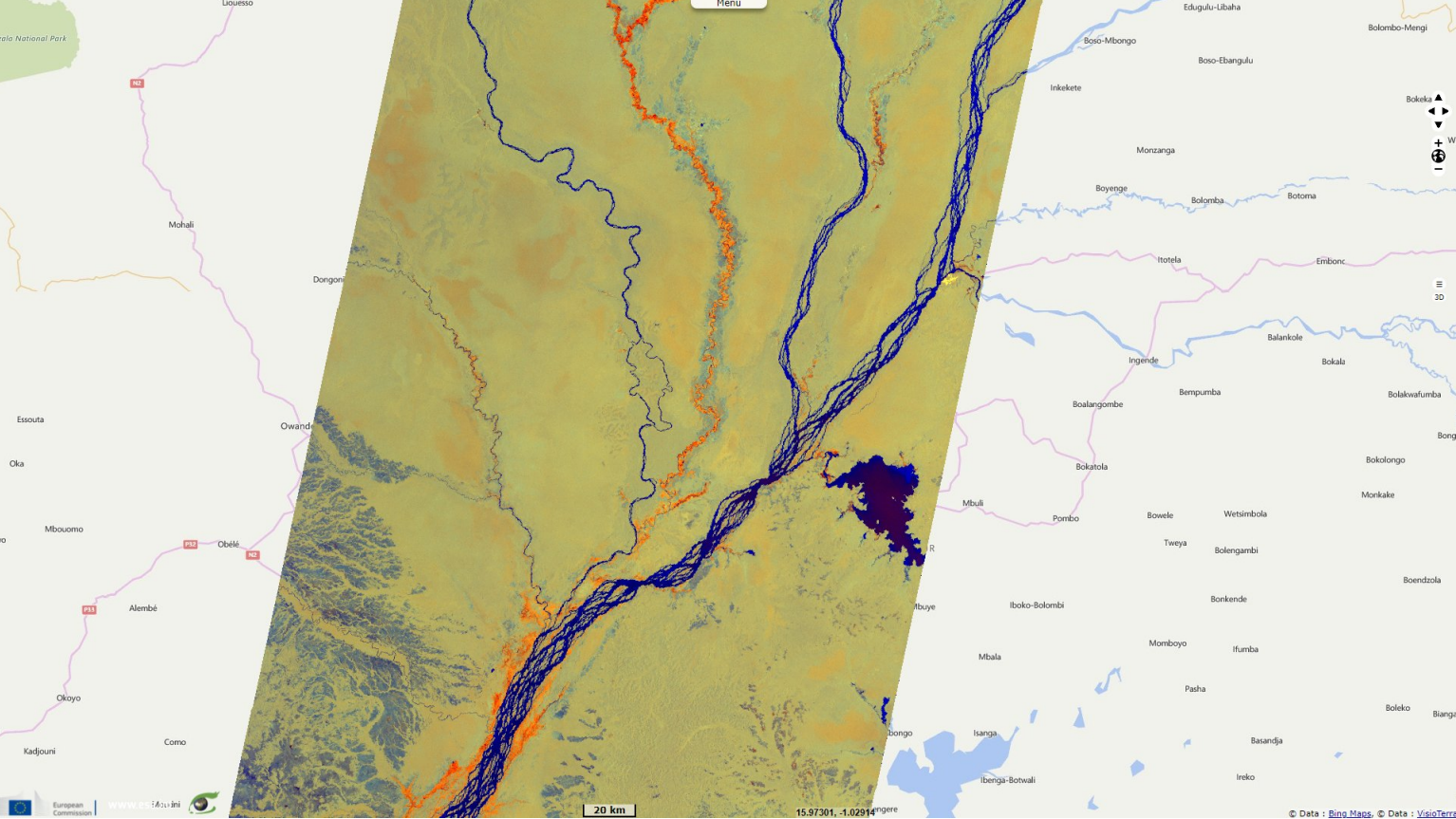


Fig. 4 - S1 (30.08.2019 - 29.10.2019) - Zakouma national park is bordered at east by the Bahr Aouk et Salamat floodplains.

[2D view](#)

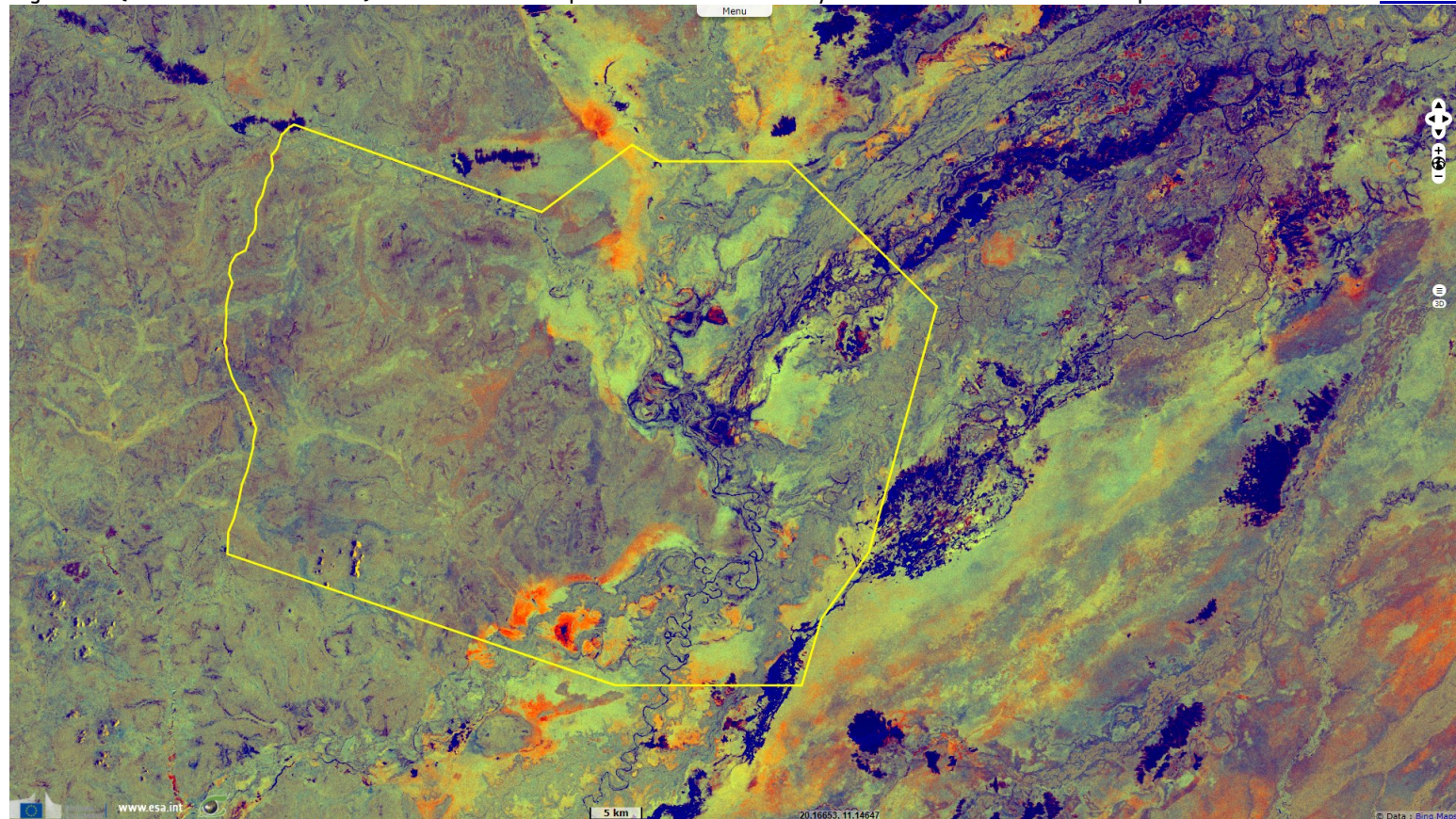
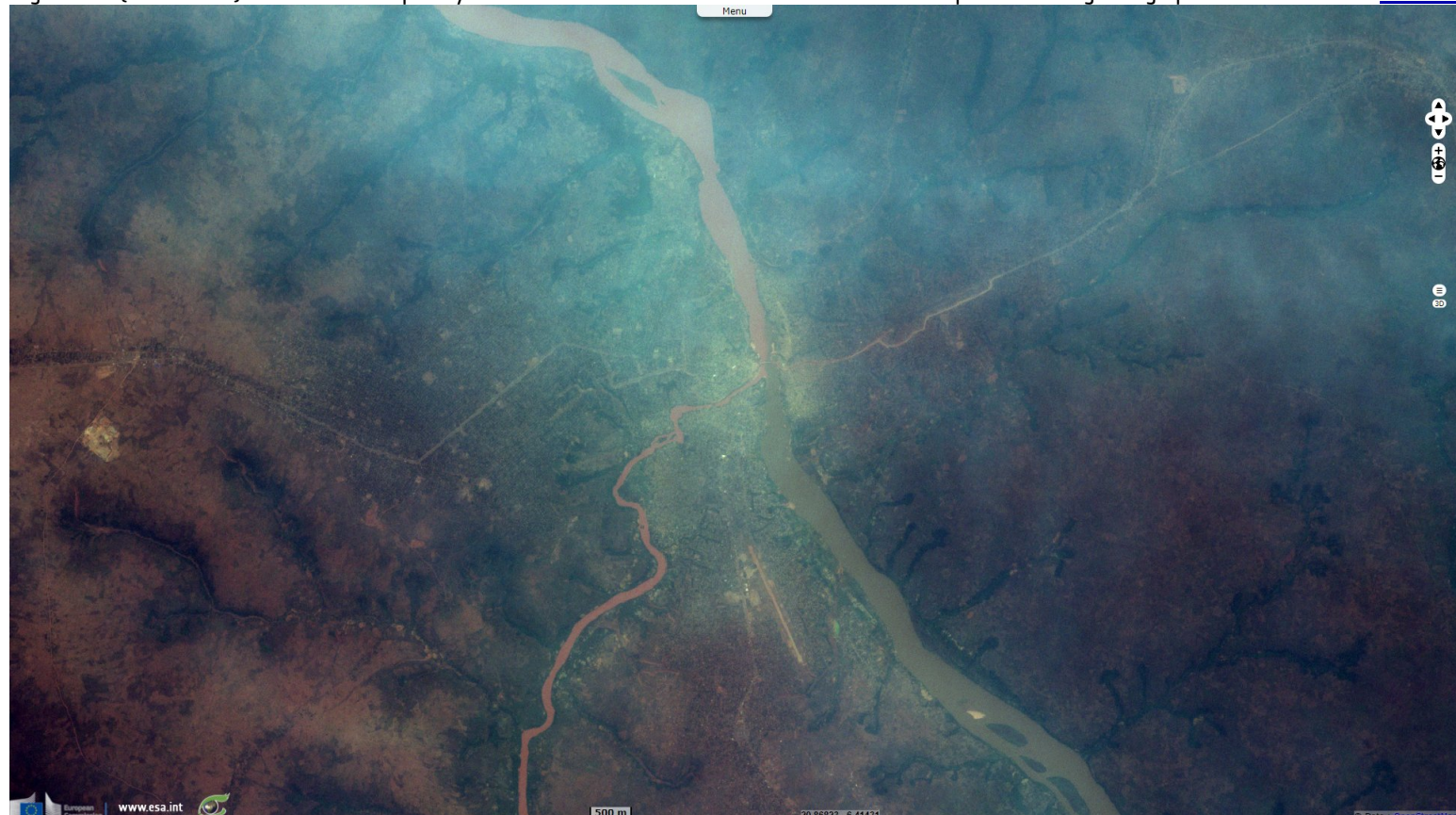


Fig. 5 - S2 (04.08.2021) - View of Tshikapa city at the confluence of the Kasai river and the Tshikapa river during a large pollution event.

[2D view](#)



*The views expressed herein can in no way be taken to reflect the official opinion of the European Space Agency or the European Union.
Contains modified Copernicus Sentinel data 2021, processed by VisioTerra.*

More on European Commission space:						
More on ESA:				S-1 website	S-2 website	S-3 website
More on Copernicus program:				SciHub portal	Cophub portal	Inthub portal
More on VisioTerra:				Sentinel Vision Portal	Envisat+ERS portal	Swarm+GOCE portal
					CryoSat portal	