

Kaskakia, from a state capital to a hamlet, Illinois, USA

Sentinel-1 CSAR IW acquired on 16 June 2018 at 23:55:47 UTC
Sentinel-2 MSI acquired on 17 December 2018 at 16:47:09 UTC
Sentinel-2 MSI acquired on 10 June 2019 at 16:39:01 UTC
Sentinel-1 CSAR IW acquired on 11 June 2019 at 23:55:53 UTC

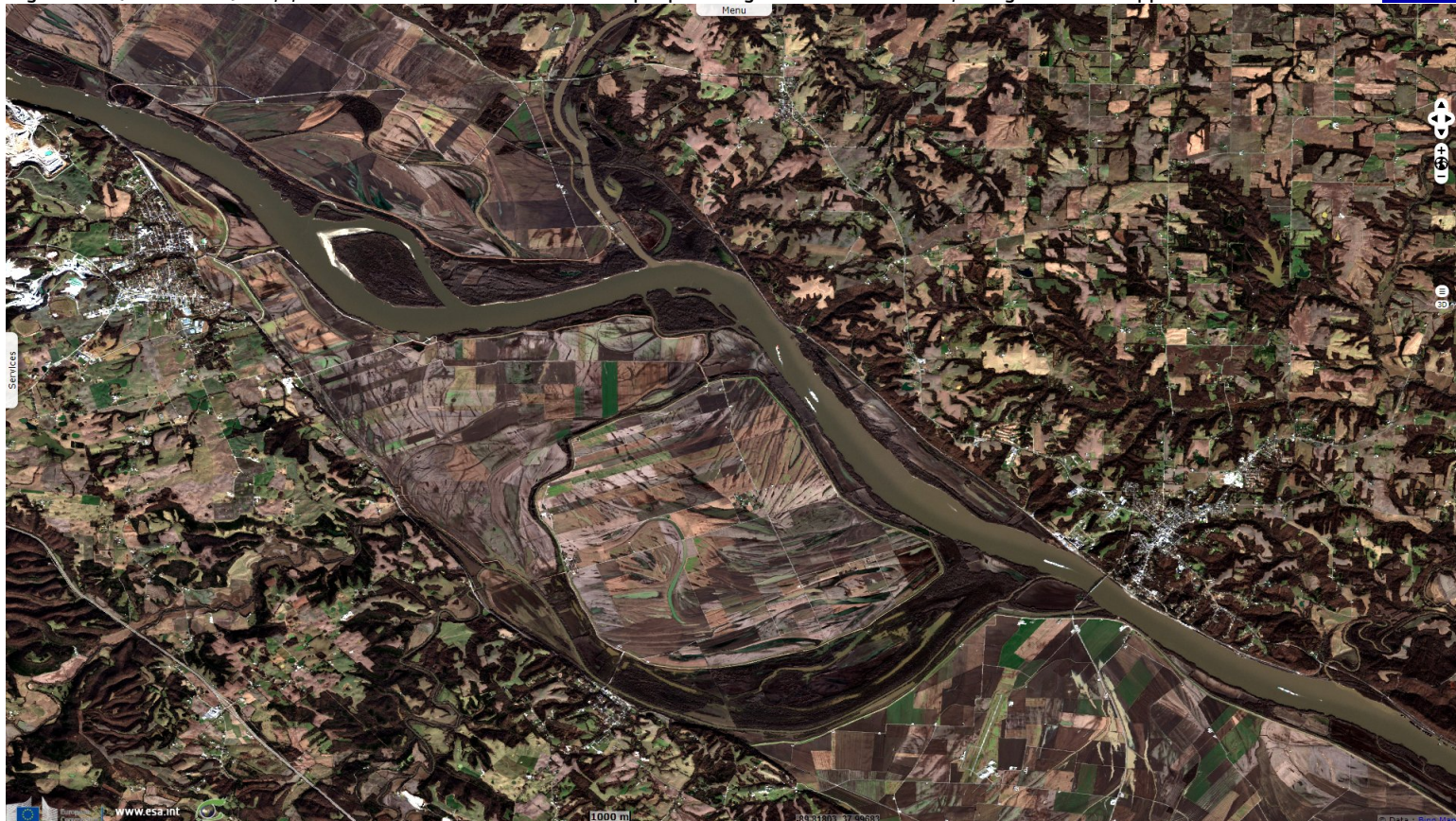
Author(s): Sentinel Vision team, VisioTerra, France - svp@visioterra.fr

Keyword(s): Urban planning, flood, Missouri river, Mississippi, Illinois, United States, USA

[2D Layerstack](#)

Fig. 1 - S2 (17.12.2018) - 4,3,2 natural colour - Native American peoples long inhabited Kaskakia, along the Mississippi.

[2D view](#)



French colonists named the town after the Illini people word for the Kaskaskia River and built a fort there.

Fig. 2 - S1 (16.06.2018) - vv,vh,ndi(vh,vv) composite - Until 1819, Kaskakia served as the capital of Illinois, its population then reached 7000. [2D view](#)

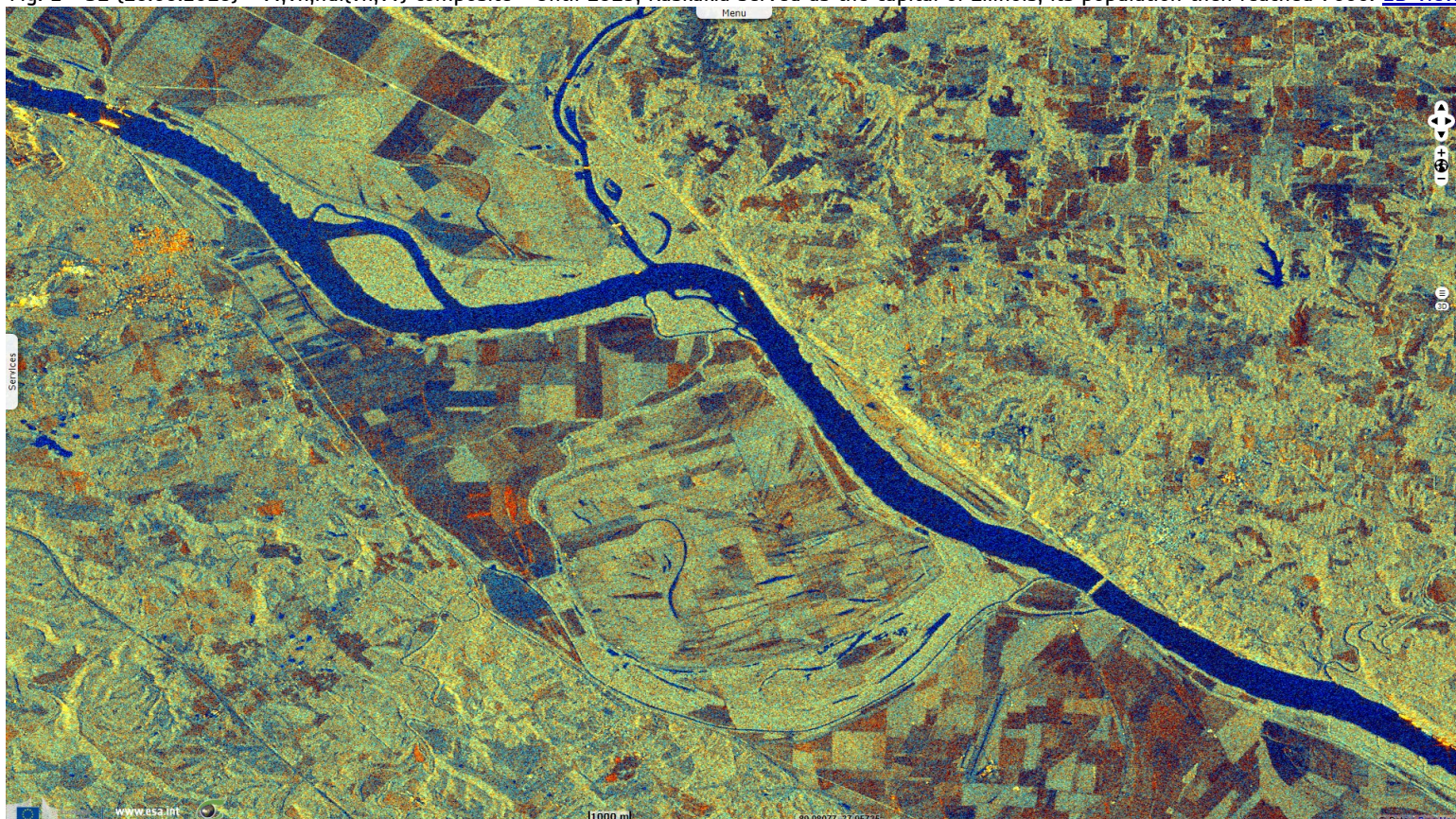
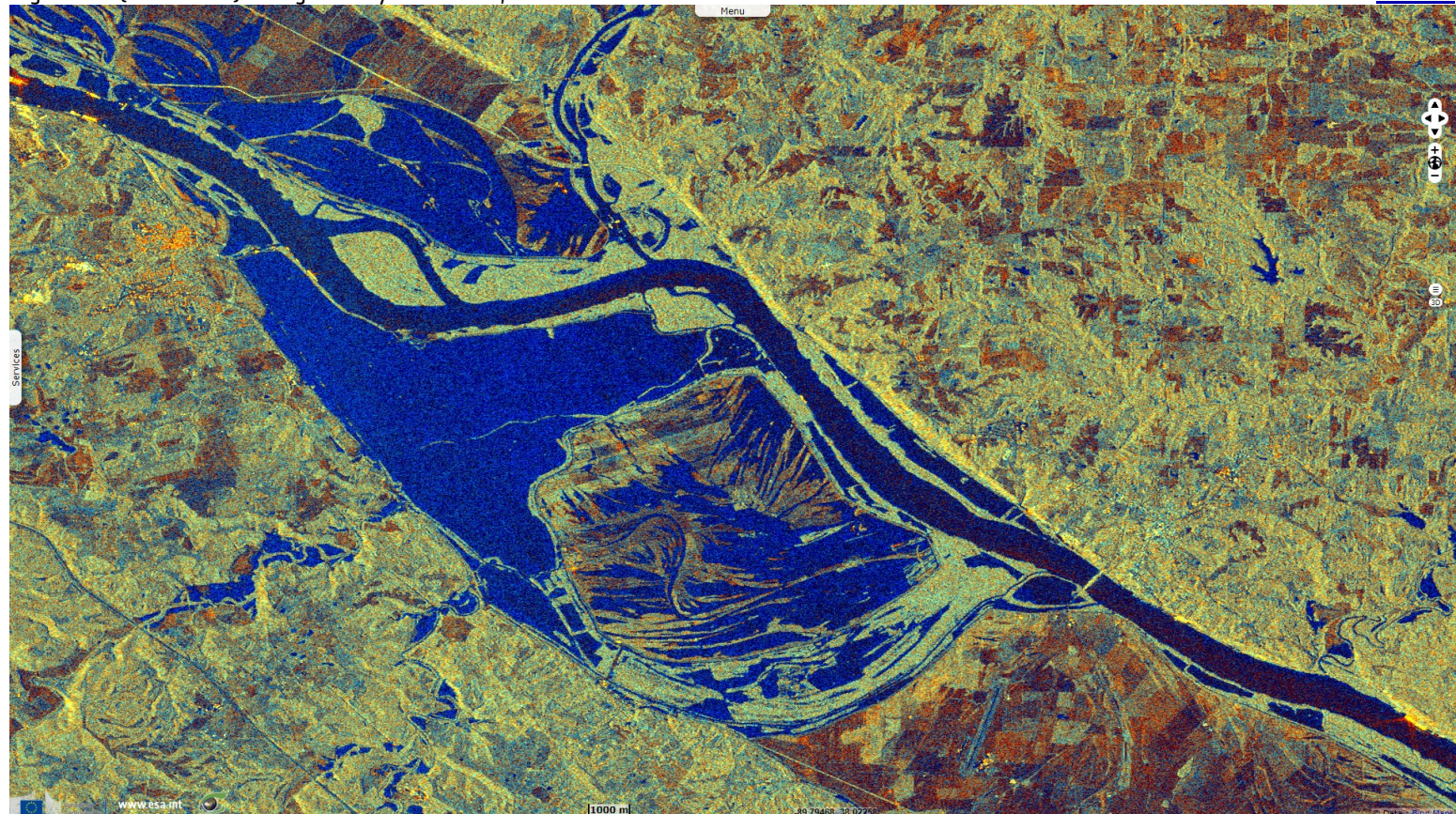














Fig. 3 - S2 (10.06.2019) - Repeatedly flooded by the Mississippi, it became an exclave of Illinois within Missouri after a channel change. [2D view](#)



Fig. 4 - S1 (11.06.2019) - Progressively abandoned, the 2010 US census counted 14 inhabitants in Kaskakia. [2D view](#)



*The views expressed herein can in no way be taken to reflect the official opinion of the European Space Agency or the European Union.
Contains modified Copernicus Sentinel data 2019, processed by VisioTerra.*

More on European Commission space:							
More on ESA:				S-1 website	S-2 website	S-3 website	
More on Copernicus program:				Scihub portal	Cophub portal	Inthub portal	Colhub portal
More on VisioTerra:				Sentinel Vision Portal	Envisat+ERS portal	Swarm+GOCE portal	CryoSat portal