

Discords regarding potential lithium sources in Europe

Sentinel-2 MSI acquired on **10 October 2021** at 10:09:41 UTC
Sentinel-2 MSI acquired on **18 February 2022** at 09:40:41 UTC
Sentinel-2 MSI acquired on **23 July 2022** at 11:21:19 UTC
Sentinel-2 MSI acquired on **09 October 2022** at 10:38:39 UTC

Author(s): Sentinel Vision team, VisioTerra, France - svp@visioterra.fr

Keyword(s): Land, mine, natural ressources, climate change, power, pollution, Serbia, France, Portugal, Germany, CzechCzech Republic



[2D Layerstack](#)

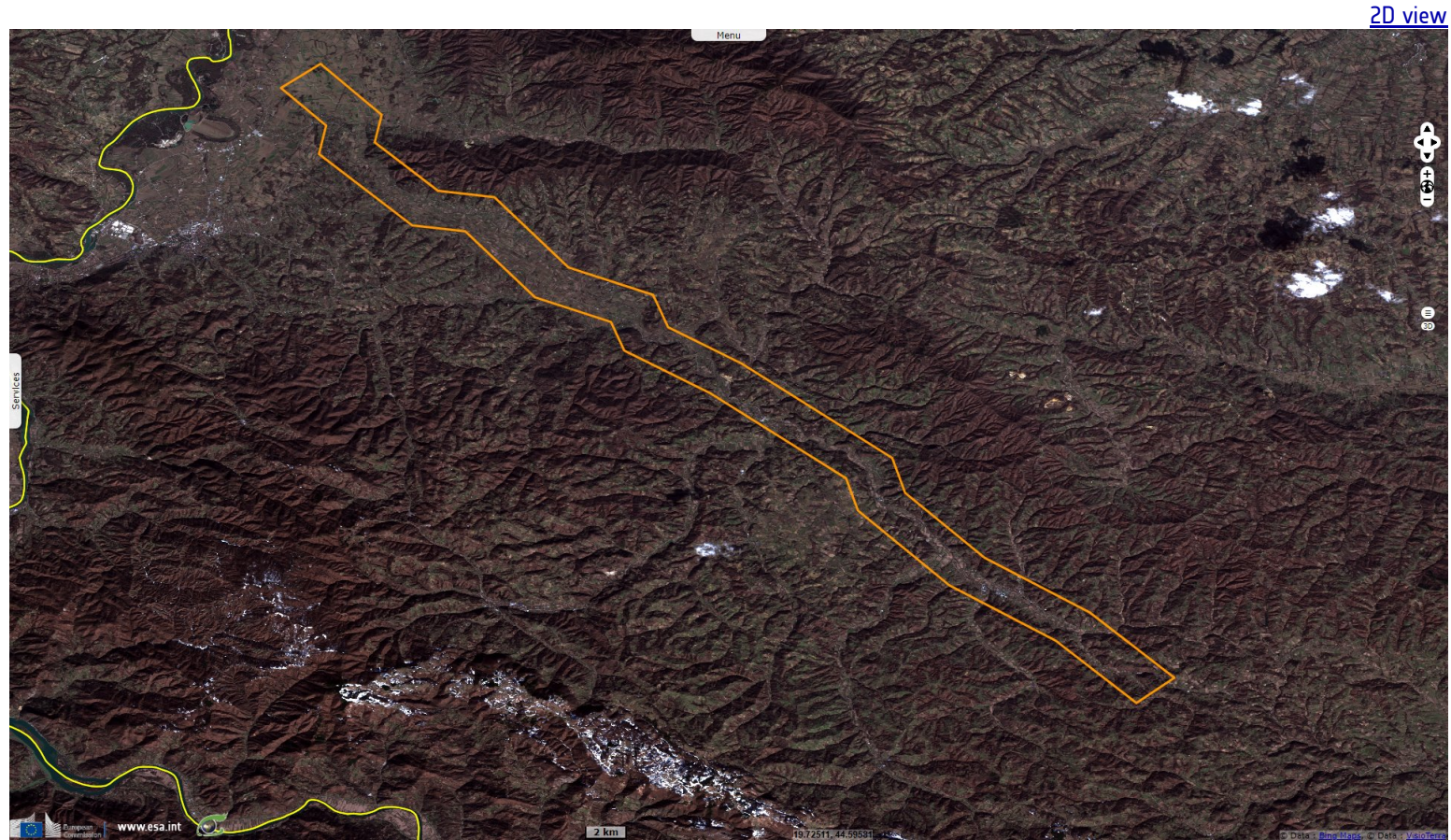
Fig. 1 - S2 (09.10.2022) - Lithium could be produced in Echassières (Massif Central, France).

[3D view](#) [3D view](#)



The potential of the Beauvoir site is estimated at between 375 000-1 000 000 tonnes of lithium, the largest in France. Another project is under study at Lauterbourg, Alsace. In another project in Tréguennec village, Brittany, more than 600 people protested against lithium mining.

Fig. 2 - S2 (18.02.2022) - At the large world-class Jadar deposit in western Serbia, strong local opposition led the government to cancel mining rights.



As more potential lithium sources are studied, Europe-sourced batteries may accelerate the conversion from fuel-powered to electric cars. As many of these projects are contested, several issues are raised: Some prefer importing lithium to externalize land degradation at the cost of strategic autonomy and commercial balance. Other tackle the question of switching over 1 billion thermal vehicles to electric equivalent without changing the use. Finally, coal-, oil- or gas-produced energy used to power these cars would still emit greenhouse gas these cars are supposed to avoid.

Fig. 3 - S2 (23.07.2022) - In northern Portugal, the verdict of the environmental authority is awaited.



According to the mayor of Boticas municipality, 95% of the local population have rejected plans for the lithium mine.

Fig. 4 - S2 (10.10.2021) - A large known lithium deposit in Europe is two-thirds in Cinovec, Czech Republic, one-third in Zinnwald, Germany. [2D view](#)



*The views expressed herein can in no way be taken to reflect the official opinion of the European Space Agency or the European Union.
Contains modified Copernicus Sentinel data 2022, processed by VisioTerra.*

More on European Commission space:						
More on ESA:				S-1 website	S-2 website	S-3 website
More on Copernicus program:				SciHub portal	CopHub portal	Inthub portal
More on VisioTerra:				Sentinel Vision Portal	Envisat+ERS portal	Swarm+GOCE portal
				CryoSat portal		