

Flooding event north of the Republic of the Congo

Sentinel-1 CSAR IW acquired on **01 July 2020** from 04:33:46 to 04:35:01 UTC
Sentinel-1 CSAR IW acquired on **30 August 2020** from 04:33:50 to 04:35:05 UTC
Sentinel-1 CSAR IW acquired on **11 September 2020** from 04:33:50 to 04:35:05 UTC
Sentinel-1 CSAR IW acquired on **17 October 2020** from 04:33:51 to 04:35:06 UTC

Author(s): Sentinel Vision team, VisioTerra, France - svp@visioterra.fr

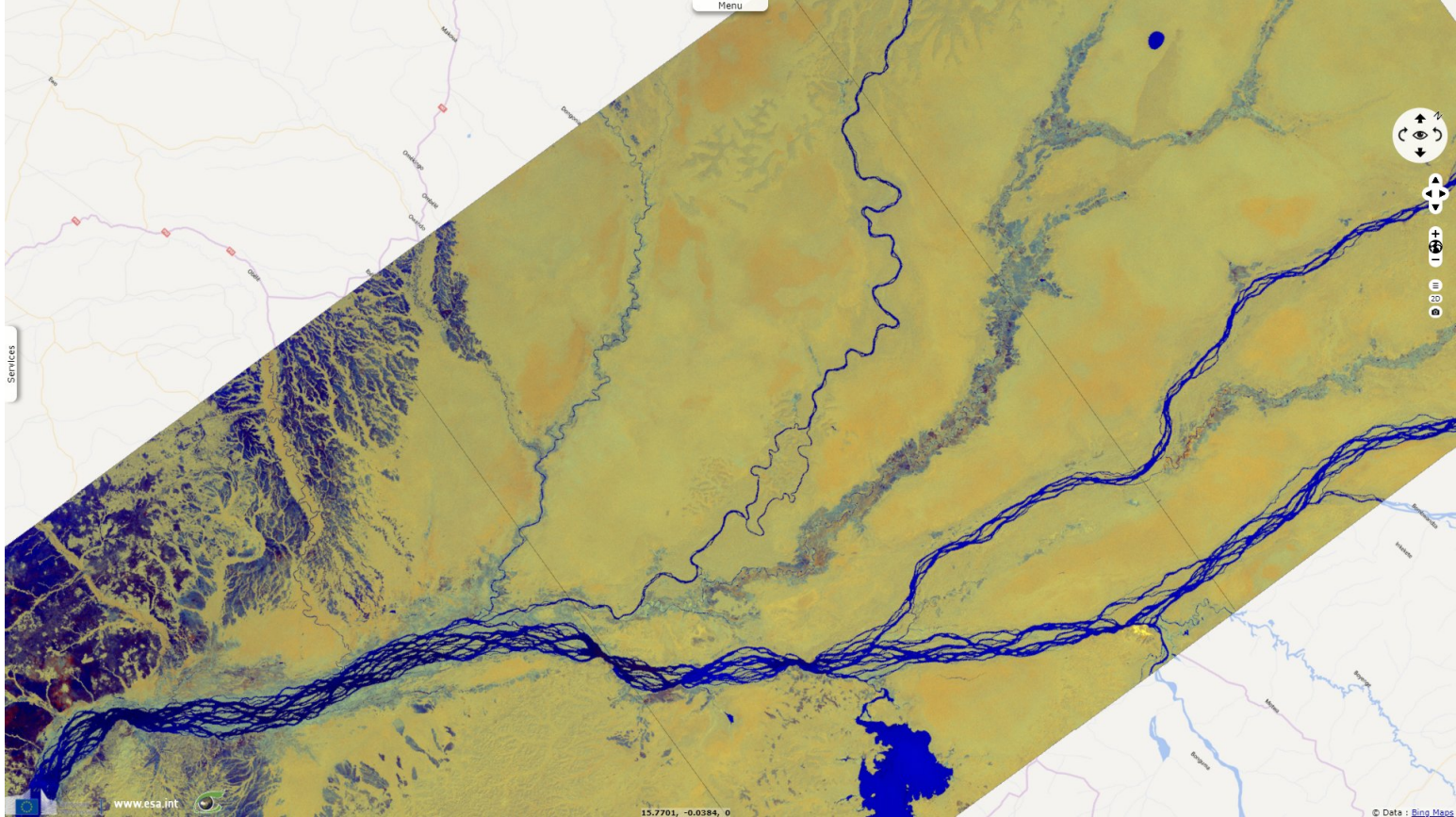
Keyword(s): Emergency, natural disaster, precipitations, river, Republic of the Congo



[2D Layerstack](#)

Fig. 1 - S1 (30.08.2020) - Seasonal flooding in the Republic of the Congo is common, especially in the northern regions.

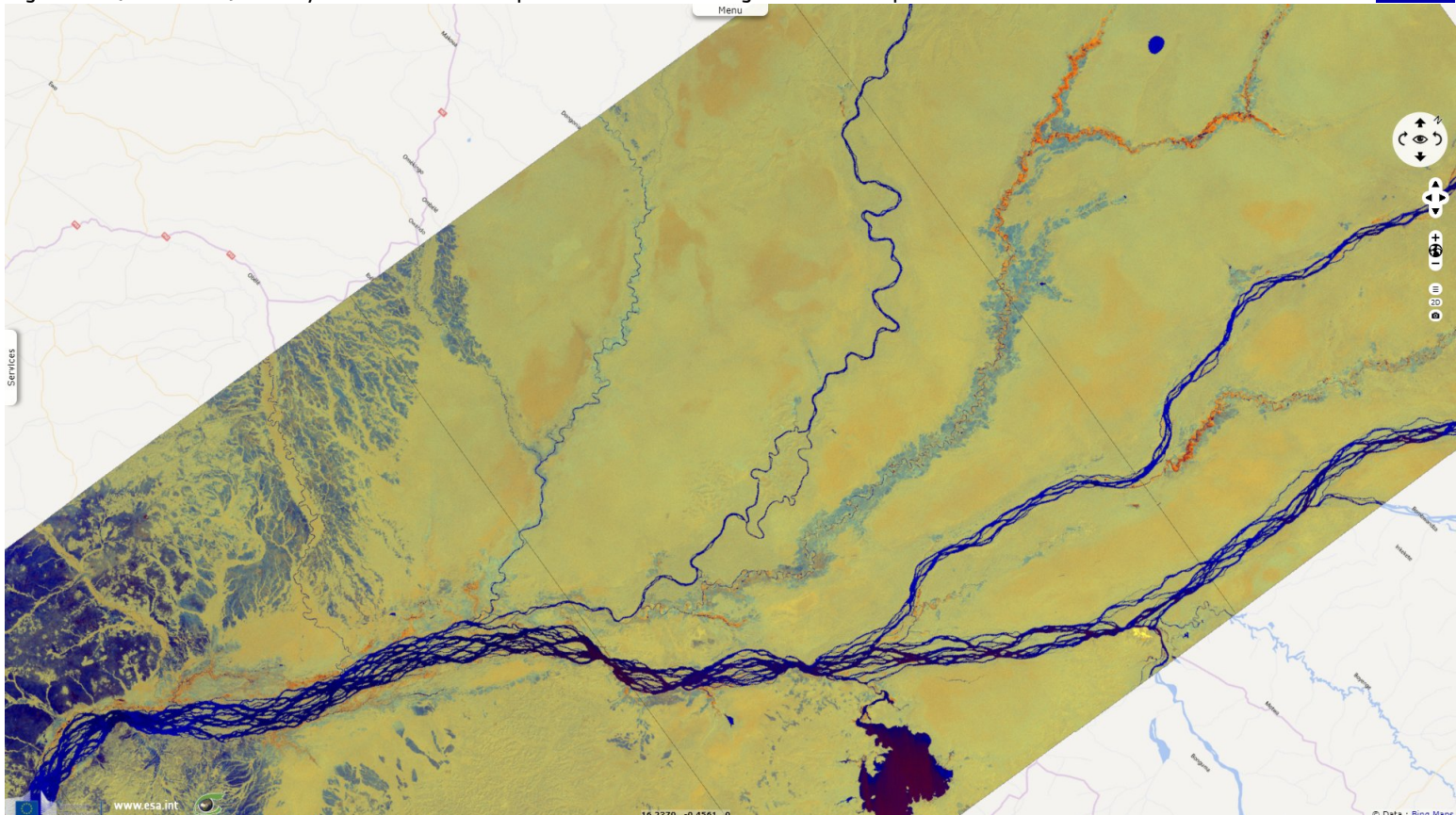
[2D view](#)



Floods affected over 169 000 people in 2019. Flooding concerns were raised in July 2020, when rainfall was reported at twice the seasonal average.

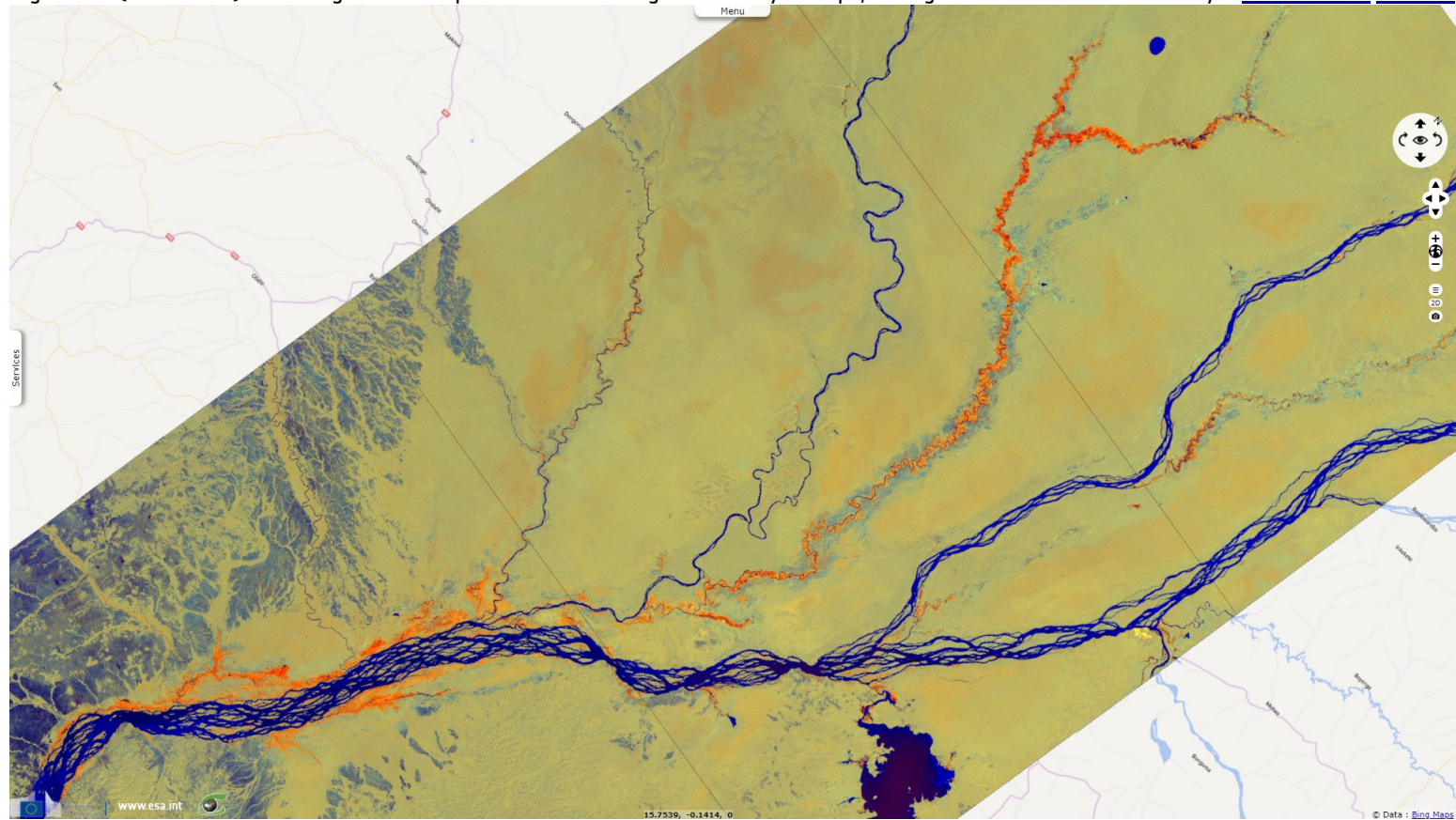
Fig. 2 - S1 (23.09.2020) - Heavy rainfall since late September caused flooding in Likouala department.

[2D view](#)















Flooding concerns were raised in July, when rainfall was reported at twice the seasonal average. 46 000 people in over 70 villages have been affected as of 18 October.

Fig. 3 - S1 (17.10.2020) - Flooding has forced premature harvesting and destroyed crops, raising concerns about food security. [2D animation](#) [2D view](#)



Prices of essential goods are already higher than average due to COVID-19-related border closures, and are likely to further increase with the effects of the floods. Other needs are not yet known, but displacement of affected populations into the forest is likely to increase health risks, should they lack adequate shelter and clean water.

*The views expressed herein can in no way be taken to reflect the official opinion of the European Space Agency or the European Union.
Contains modified Copernicus Sentinel data 2020, processed by VisioTerra.*

More on European Commission space:							
More on ESA:				S-1 website	S-2 website	S-3 website	
More on Copernicus program:				Scihub portal	Cophub portal	Inthub portal	Colhub portal
More on VisioTerra:				Sentinel Vision Portal	Envisat+ERS portal	Swarm+GOCE portal	CryoSat portal