



[3D Layerstack](#)

A blast from the port devastates Beyrouth, Lebanon

Sentinel-1 CSAR IW acquired on 23 July 2020 at 15:41:10 UTC

...

Sentinel-2 MSI acquired on 24 July 2020 at 08:16:11 UTC

Sentinel-1 CSAR IW acquired on 06 August 2020 at 03:34:46 UTC

Sentinel-2 MSI acquired on 08 August 2020 at 08:16:09 UTC

Author(s): Sentinel Vision team, VisioTerra, France - svp@visioterra.fr

Keyword(s): Emergency, disaster, urban, port infrastructures, Lebanon

Fig. 1 - S2 (24.07.2020) - A fire spread at Beyrouth port on 04.08.2020 during the afternoon.

[2D view](#)



Fig. 2 - S2 (08.08.2020) - It detonated 2750T of ammonium nitrate, fertilizers known for their explosive potential.

[2D animation](#) [2D view](#)

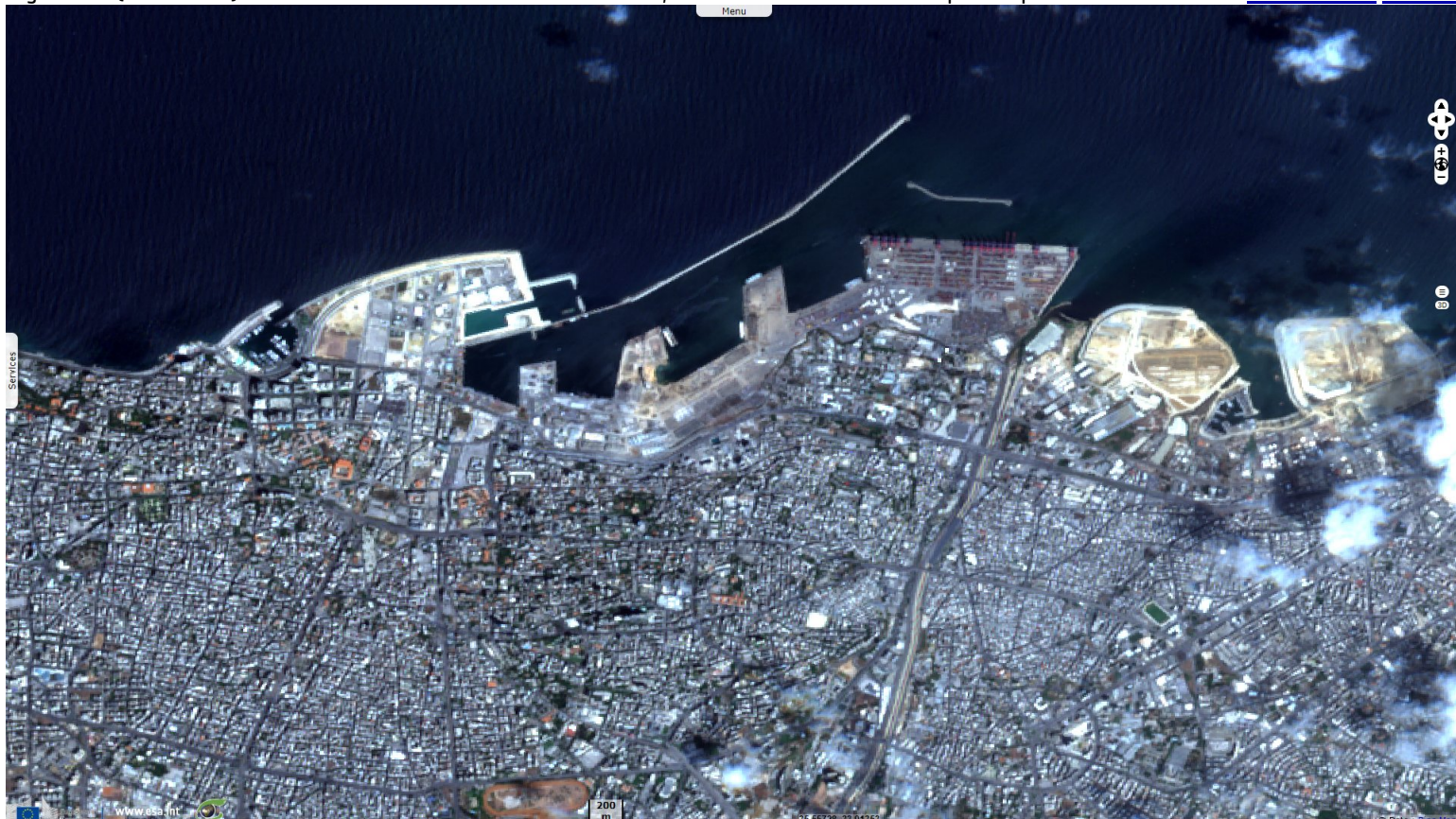
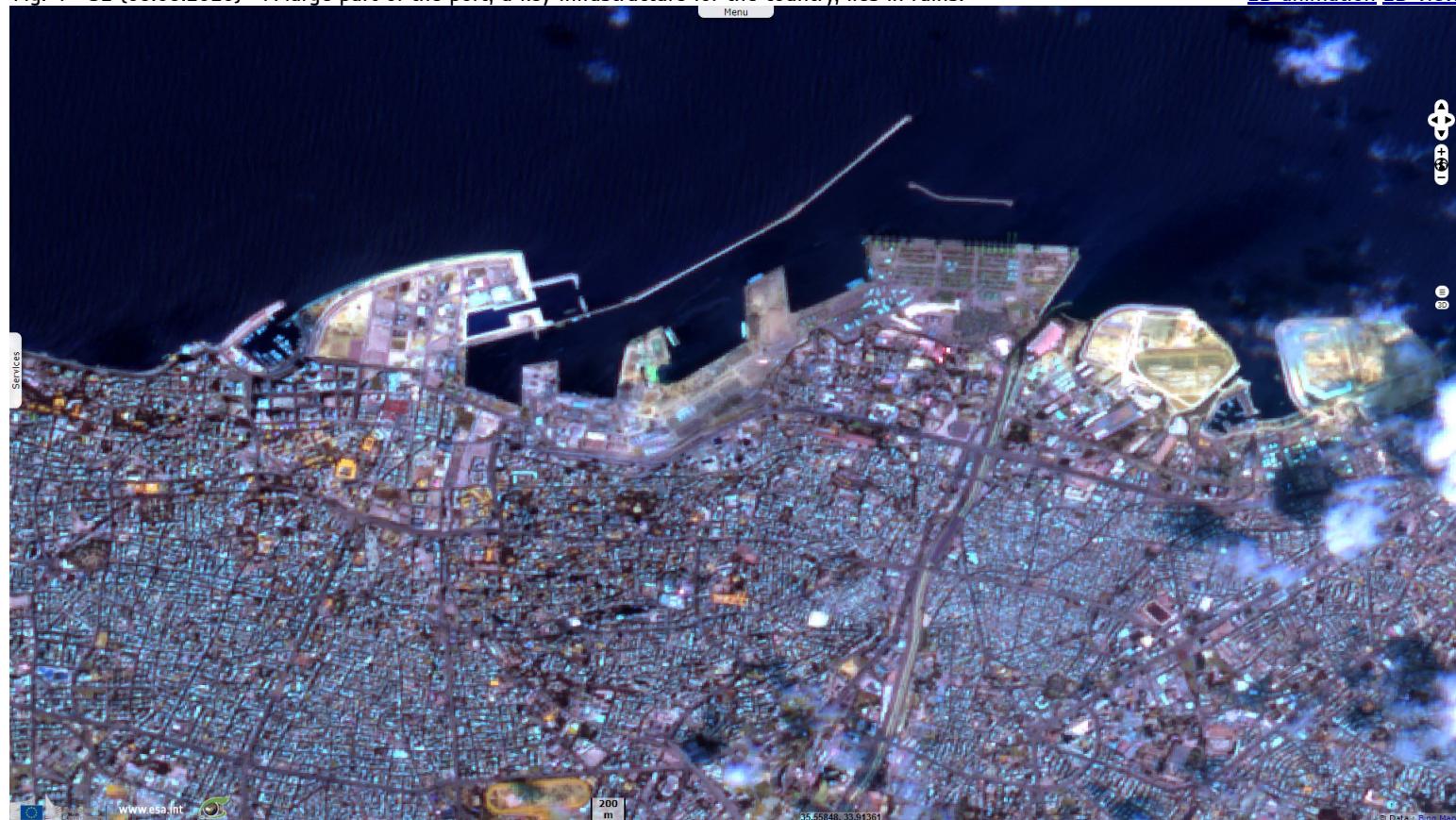


Fig. 3 - S2 (24.07.2020) - The ensuing explosion killed at least 150 people, wounded over 6000, tens are still missing, 300 000 are homeless. [2D view](#)



It had been seized from an out of order ship sailing under a flag of convenience. At the port, the fertilizers have been stored for 6 years without adequate security.

Fig. 4 - S2 (08.08.2020) - A large part of the port, a key infrastructure for the country, lies in ruins. [2D animation](#) [2D view](#)



Recording 3.3 on the Richter scale, the blast has been felt 200km away in Chyprus or in Bekka region beyond the 3000m high Lebanon range. The destruction in the capital is worse than it was after the war.

Fig. 5 - S1 (magenta: 23-25.08.2020, green: 04-08.08.2020 - vv composite - A 43m deep crater formed at the source of the detonation. [2D view](#)

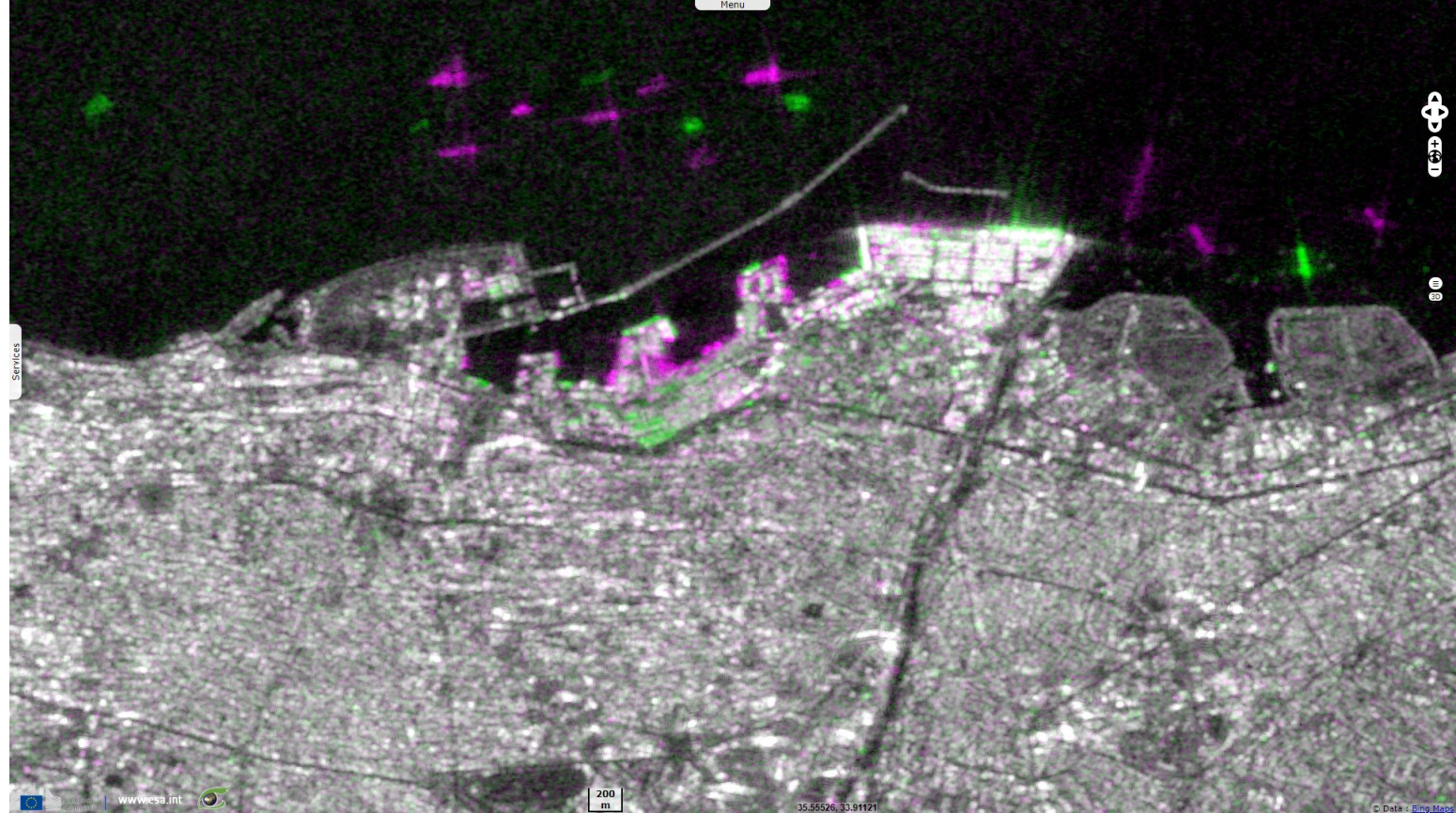
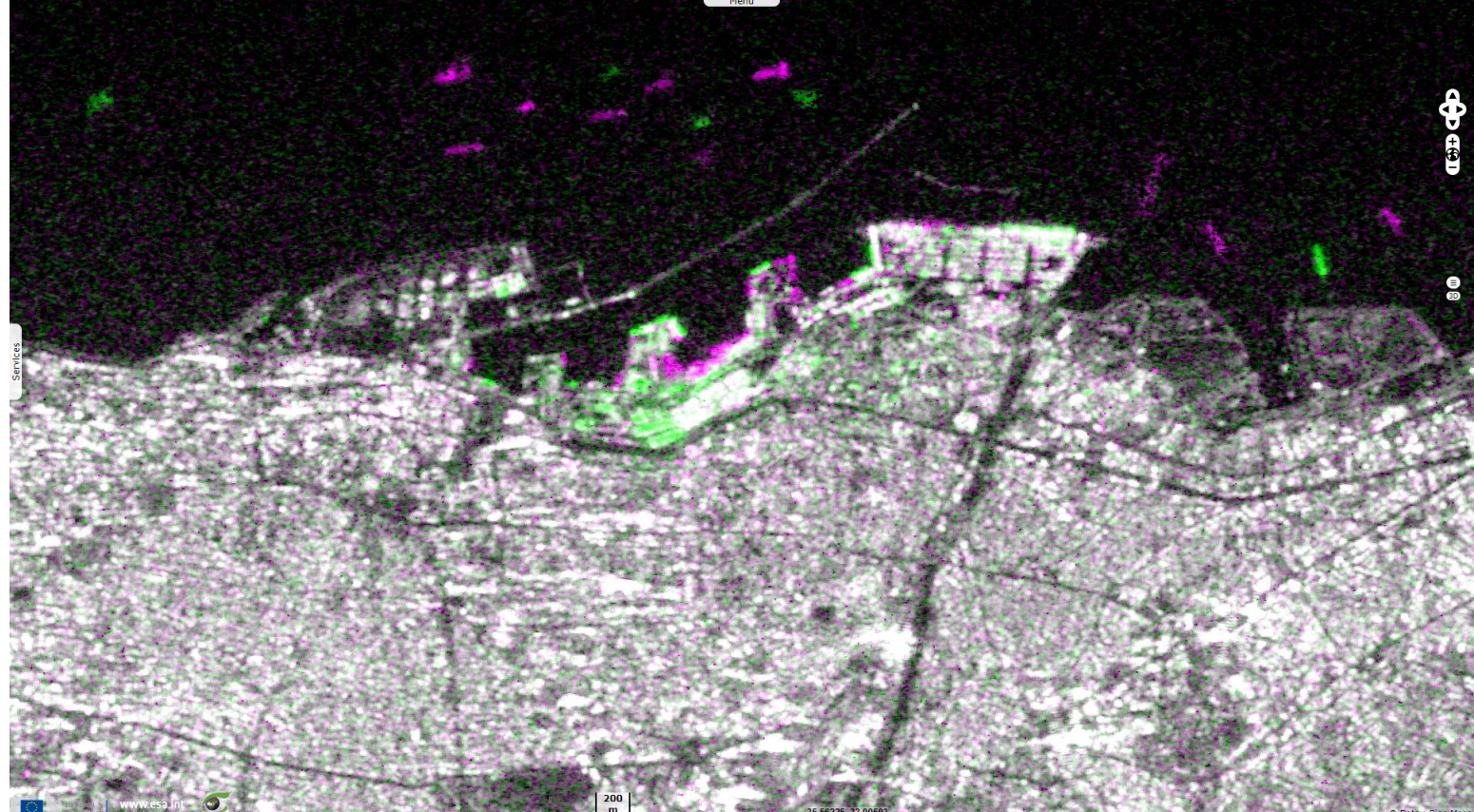














Fig. 6 - S1 (magenta: 23-25.08.2020, green: 04-08.08.2020 - vh composite - Additionally, most windows have been blown in the capital city. [2D view](#)



*The views expressed herein can in no way be taken to reflect the official opinion of the European Space Agency or the European Union.
Contains modified Copernicus Sentinel data 2020, processed by VisioTerra.*

More on European Commission space:							
More on ESA:				S-1 website	S-2 website	S-3 website	
More on Copernicus program:				Scihub_portal	Cophub_portal	Inthub_portal	Colhub_portal
More on VisioTerra:				Sentinel Vision Portal	Envisat+ERS portal	Swarm+GOCE portal	CryoSat_portal