

Europe's largest onshore wind farm on Romanian coast

Sentinel-1 CSAR IW acquired on 22 March 2019 at 04:12:44 UTC

Sentinel-1 CSAR IW acquired on 03 April 2019 at 04:12:45 UTC

...

Sentinel-1 CSAR IW acquired on 26 June 2019 at 04:12:48 UTC

Sentinel-1 CSAR IW acquired on 08 July 2019 at 04:12:50 UTC

Author(s): Sentinel Vision team, VisioTerra, France - svp@visioterra.fr

Keyword(s): Land, coastal, windpower, renewable energy, climate change, infrastructure, Romania, Black Sea



[2D Layerstack](#)

Fig. 1 - S1 (mean 22.03.2019->08.07.2019) - vv,vh,ndi(vh,vv) colour composite - Fântânele-Cogealac Wind Farm lies near the Danube delta. [2D view](#)



Fig. 2 - standard deviation (stddev): vv,vh,vv colour composite - Its 240 turbines have a max capacity of 600 MW. [2D view](#)

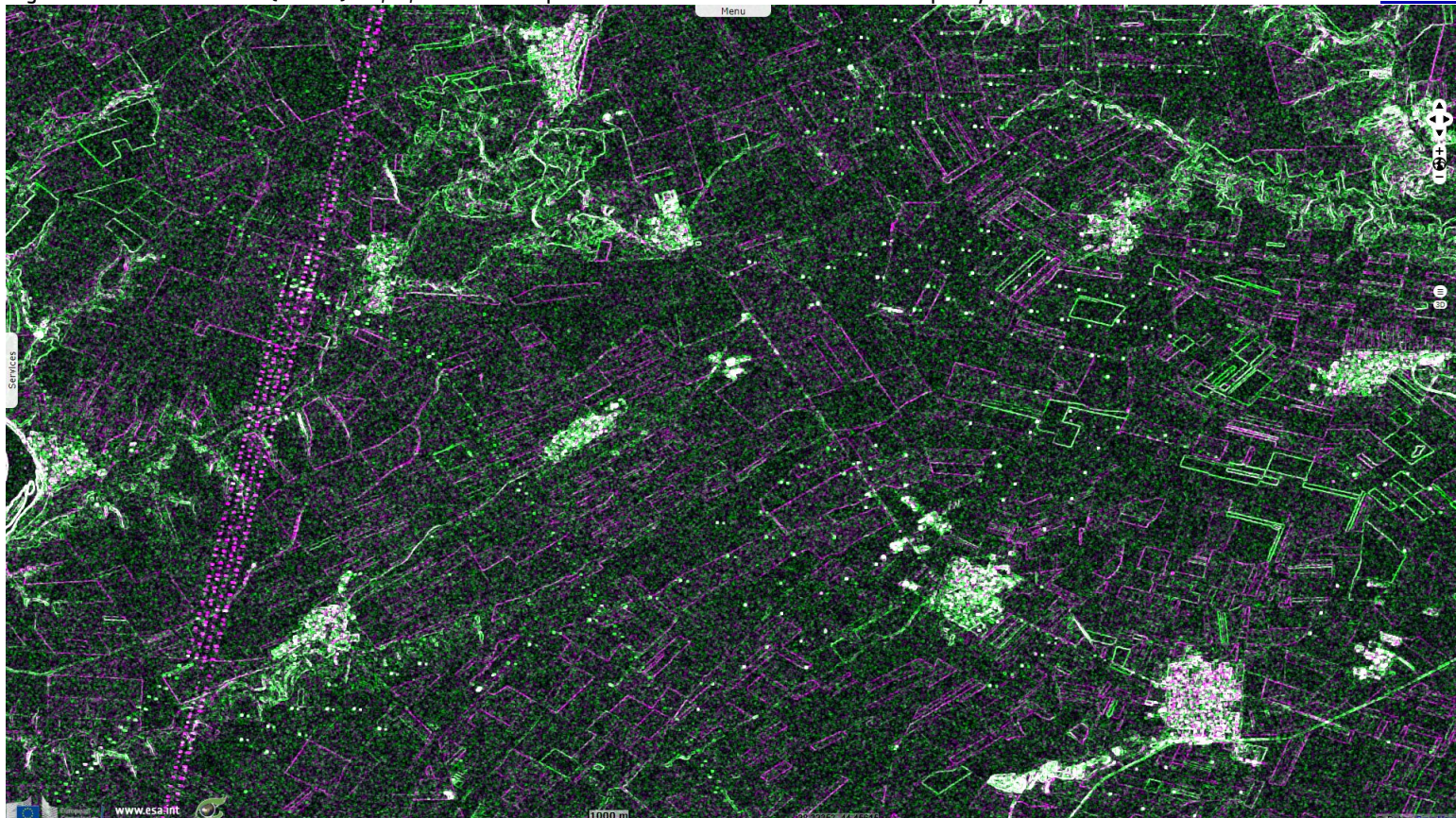
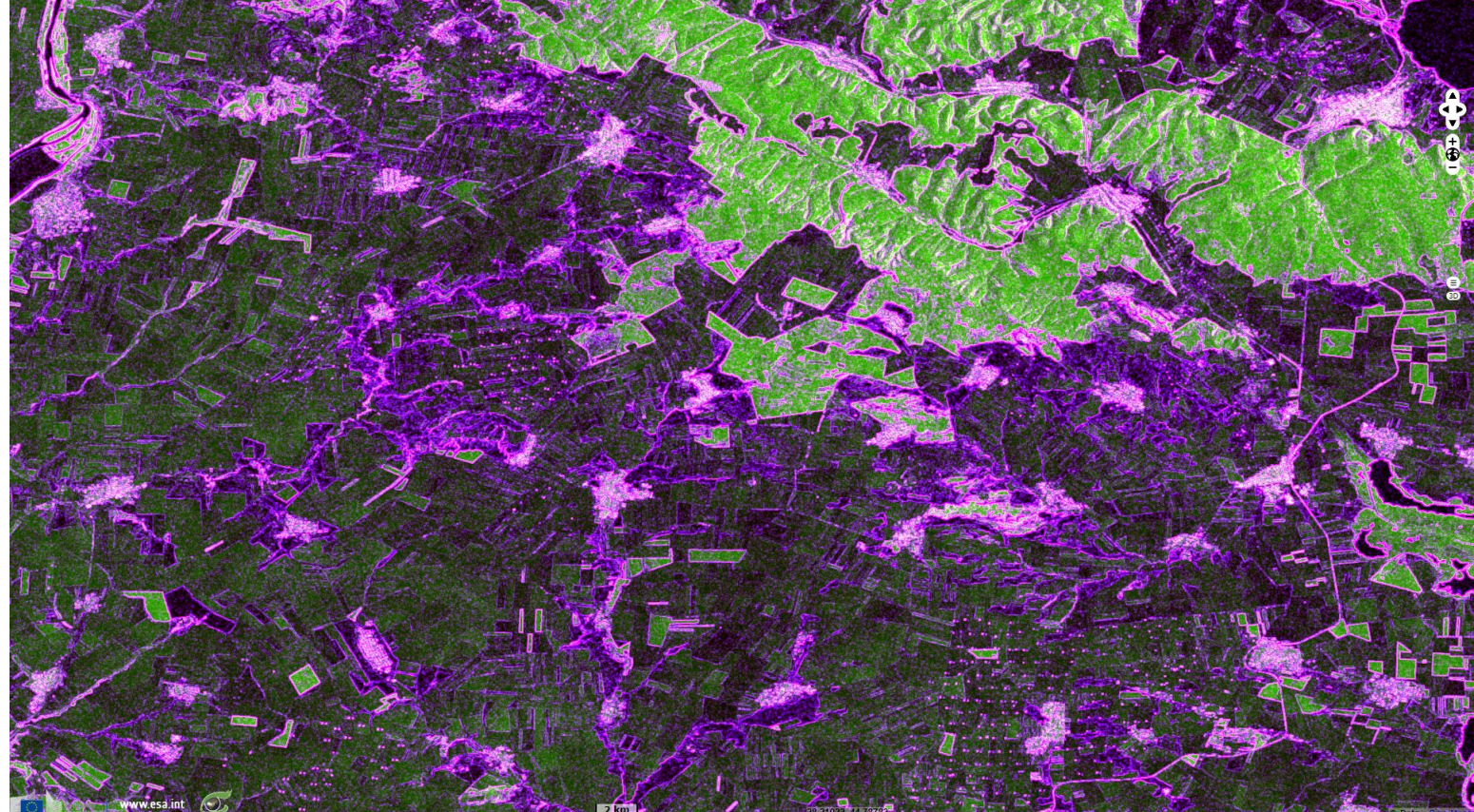














Fig. 3 - coefficient of variation (cv): vv,vh,vv colour composite - Benefiting from the Black Sea strong winds, it's Europe's largest onshore farm [2D view](#)



Fig. 4 - cv(vh),vh,stddev(vh) colour composite - The higher contrast computed on multitudes mean highlights turbines as pairs of dots. [2D view](#)



*The views expressed herein can in no way be taken to reflect the official opinion of the European Space Agency or the European Union.
Contains modified Copernicus Sentinel data 2019, processed by VisioTerra.*

More on European Commission space:						
More on ESA:				S-1 website	S-2 website	S-3 website
More on Copernicus program:				SciHub portal	Cophub portal	Inthub portal
More on VisioTerra:				Sentinel Vision Portal	Envisat+ERS portal	Swarm+GOCE portal
					CryoSat portal	