

Heavy rainfalls in flood-prone Hirshabelle state Somalia

Sentinel-2 MSI acquired on 24 April 2021 at 07:06:19 UTC
Sentinel-1 CSAR IW acquired on 28 May 2021 at 02:46:21 UTC
Sentinel-2 MSI acquired on 03 June 2021 at 07:06:19 UTC
Sentinel-1 CSAR IW acquired on 09 June 2021 at 02:46:22 UTC

Author(s): Sentinel Vision team, VisioTerra, France - svp@visioterra.fr

Keyword(s): Flooding, precipitations, rainfalls, hydrology, Somalia

[2D Layerstack](#)

Fig. 1 - S2 (24.04.2021) - By mid-May breakages along the banks of the the Shabelle river caused severe flooding affecting thousands.

[2D view](#)

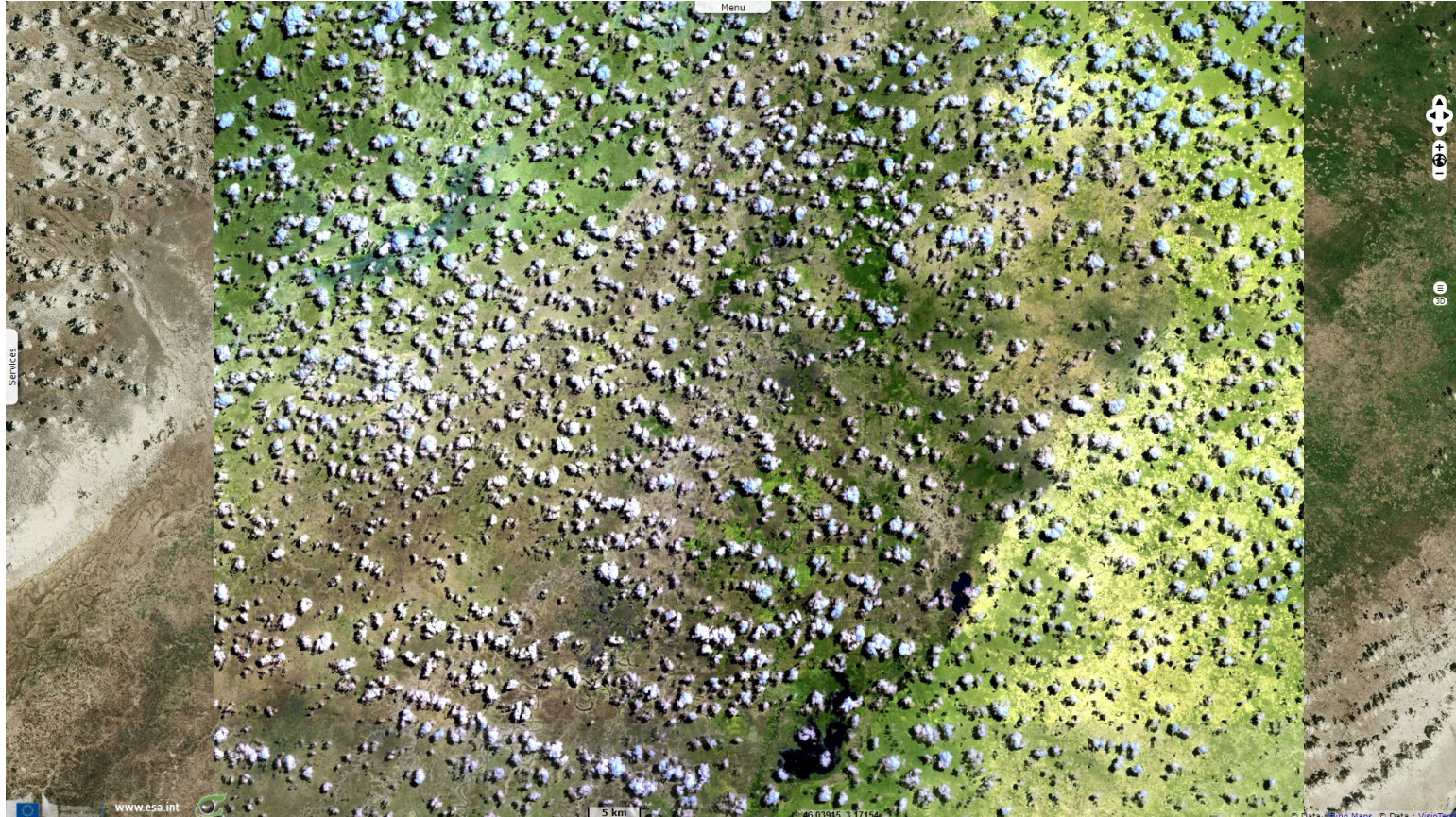
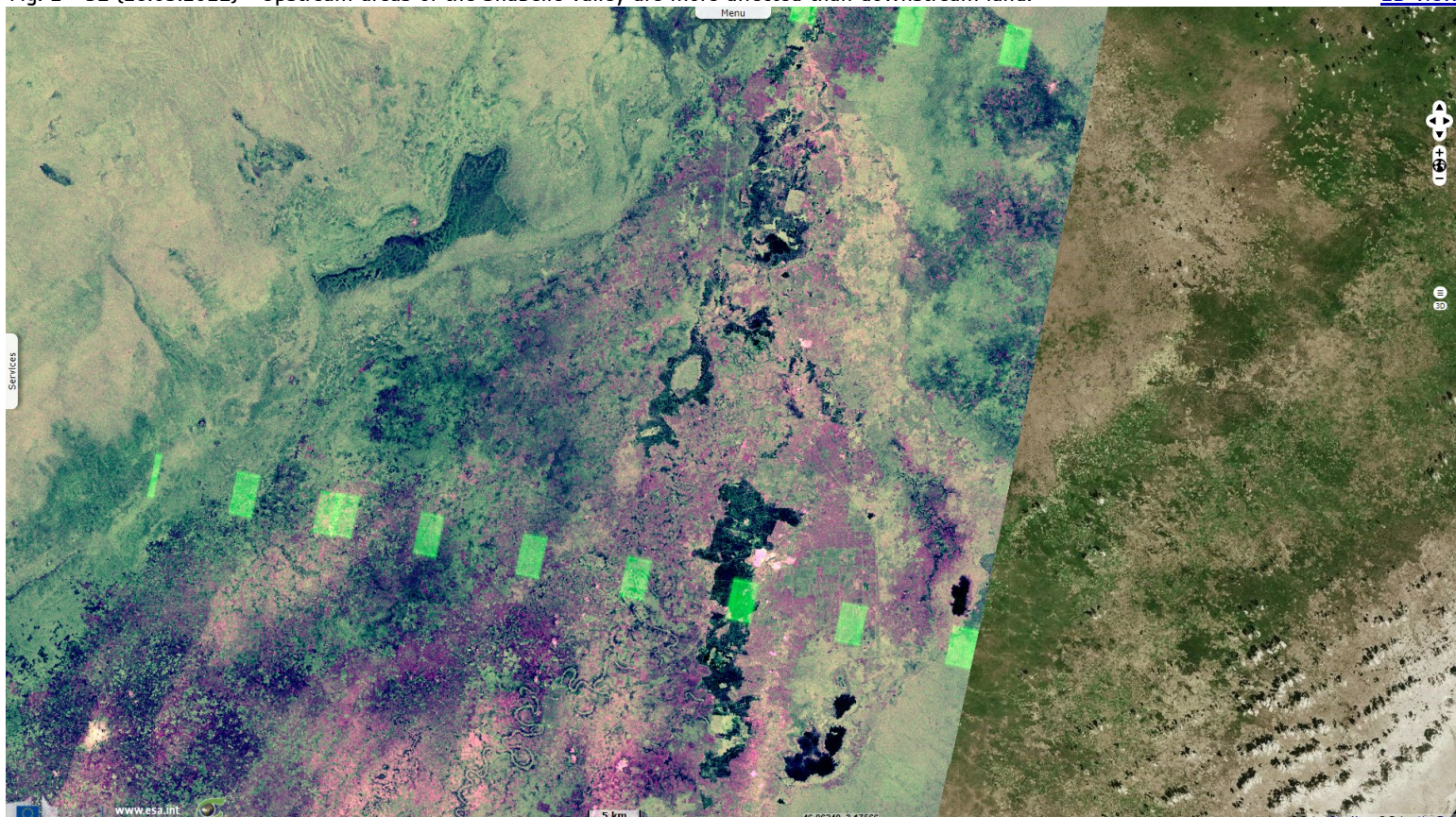


Fig. 2 - S1 (28.05.2021) - Upstream areas of the Shabelle valley are more affected than downstream land.

[2D view](#)



As of 03 June, floods in Jowhar district have destroyed +400 km² of farmland and damaged 82% of Water, Sanitation and Hygiene infrastructures.

Fig. 3 - S2 (03.06.2021) - Flooding across Somalia has affected about 400 000 people and displaced over 100 000 in 14 districts.

[2D view](#)

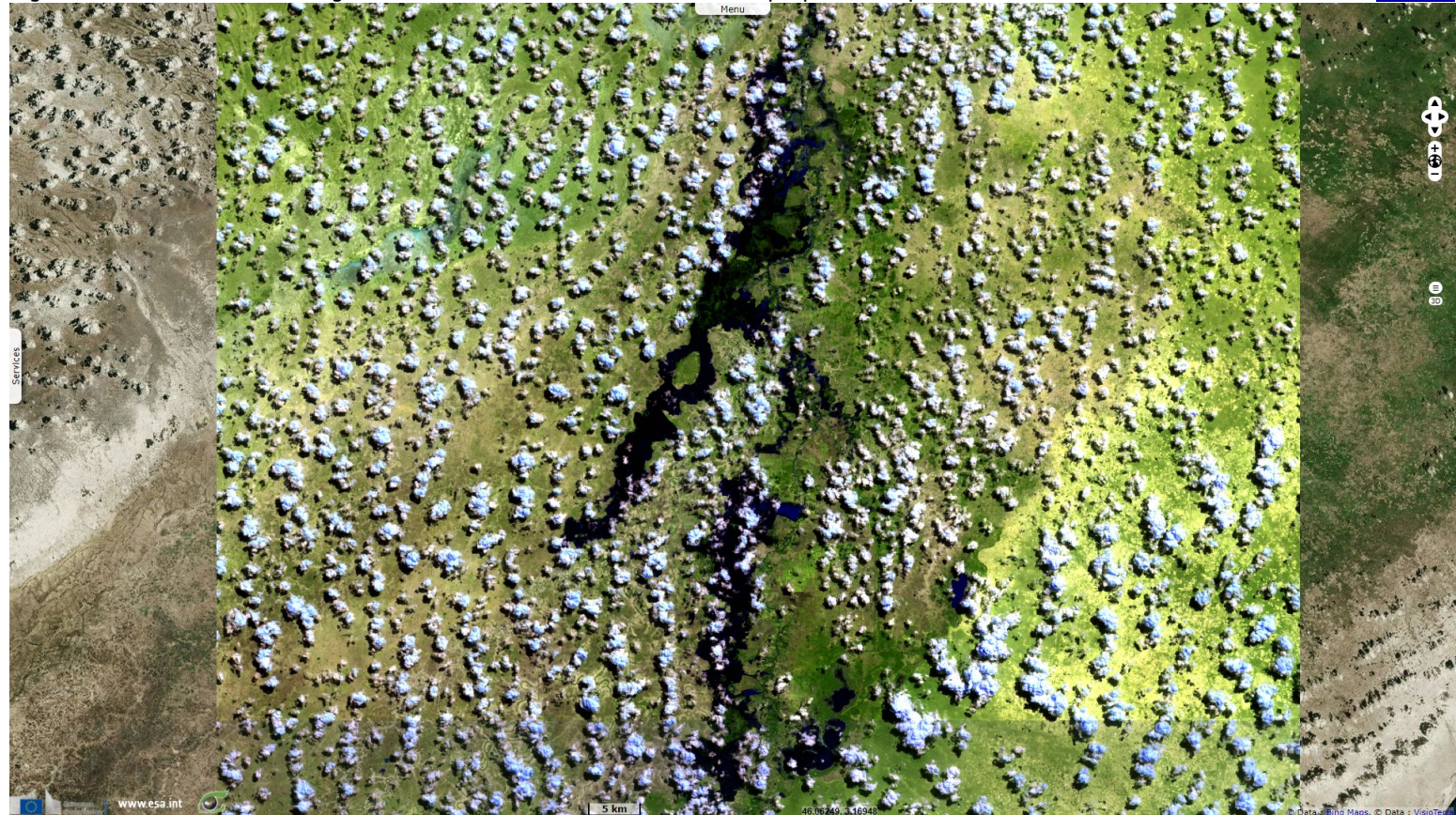
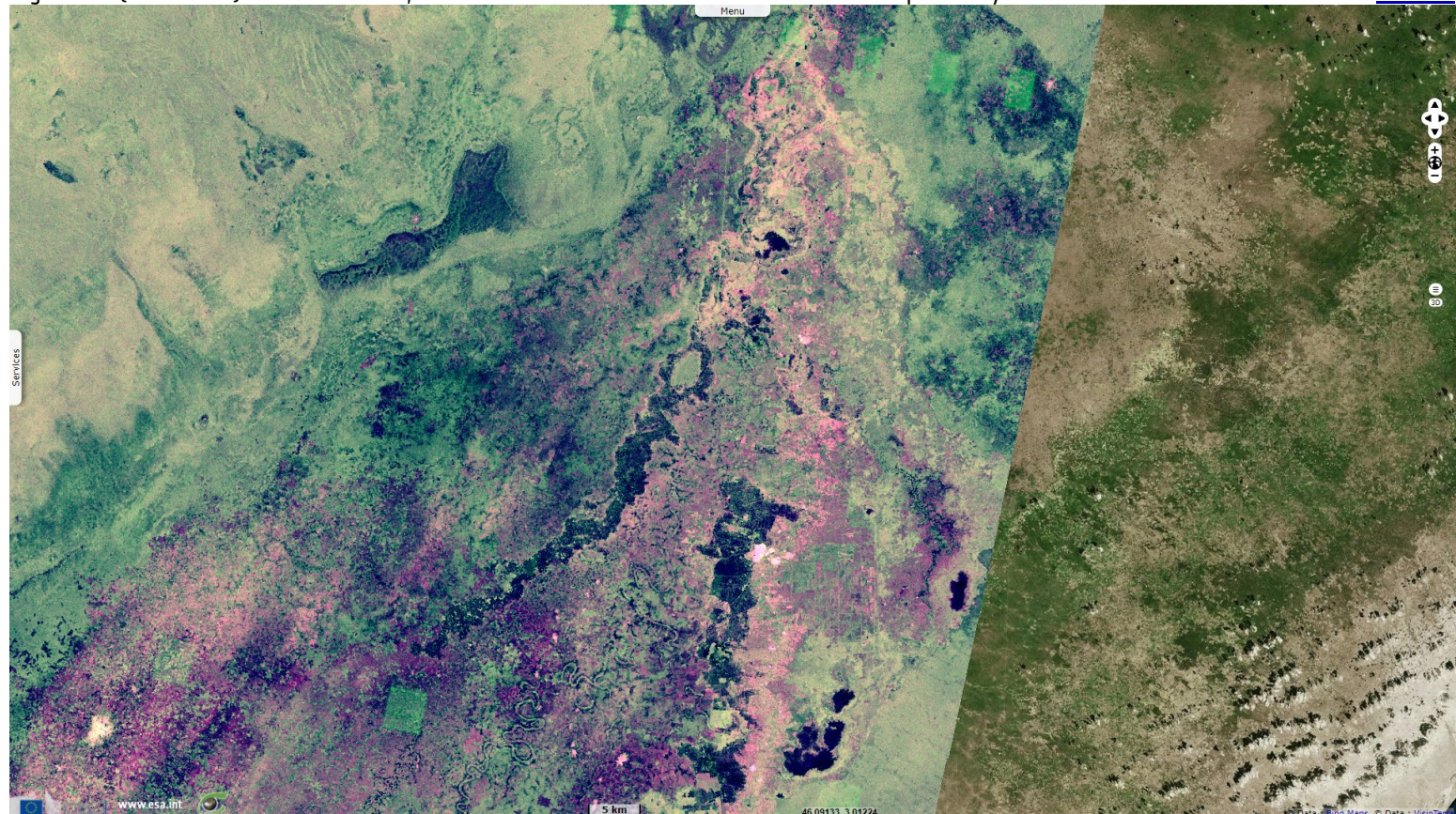














Fig. 4 - S1 (09.06.2021) - One week later, flooded areas are further downstream while some previously flooded land is now water free.

[2D view](#)



*The views expressed herein can in no way be taken to reflect the official opinion of the European Space Agency or the European Union.
Contains modified Copernicus Sentinel data 2021, processed by VisioTerra.*

More on European Commission space:							
More on ESA:				S-1 website	S-2 website	S-3 website	
More on Copernicus program:				SciHub portal	Cophub portal	Inthub portal	Colhub portal
More on VisioTerra:				Sentinel Vision Portal	Envisat+ERS portal	Swarm+GOCE portal	CryoSat portal