

Belcher Islands, Hudson Bay, Canada

Sentinel-2 MSI acquired on 31 July 2020 at 16:29:01 UTC
Sentinel-1 CSAR EW acquired on 18 September 2020 at 11:33:29 UTC
Sentinel-2 MSI acquired on 02 April 2021 at 16:28:29 UTC
Sentinel-1 CSAR EW acquired on 22 April 2021 at 11:33:27 UTC

Author(s): Sentinel Vision team, VisioTerra, France - svp@visioterra.fr

Keyword(s): Archipelago, island, polar, Arctic, Canada.



[2D Layerstack](#)

Fig. 1 - S1 (22.04.2021) - The Belcher Islands are an archipelago in the southeast part of Hudson Bay.

[2D view](#)

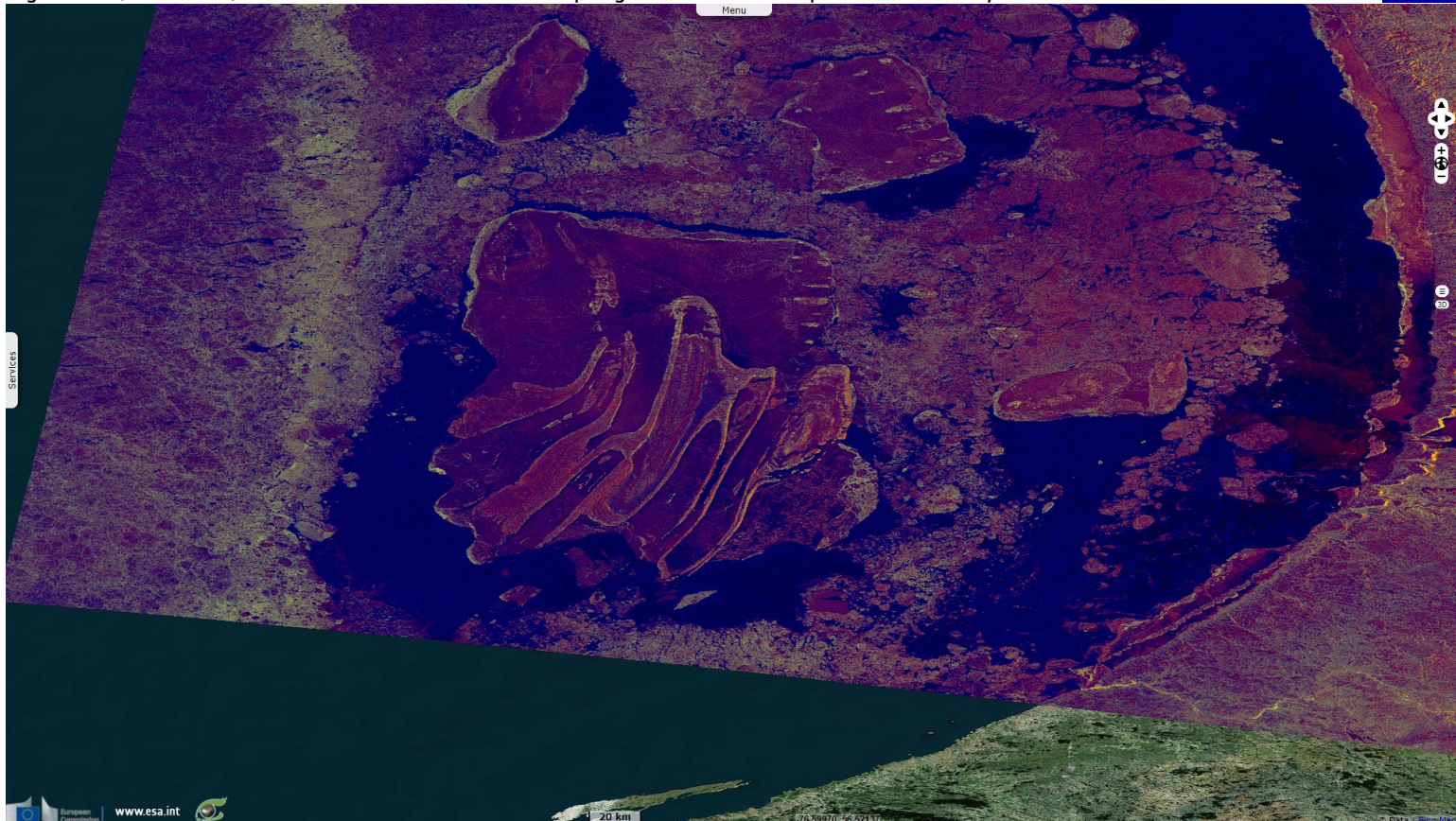


Fig. 2 - S2 (02.04.2021) - Almost 3000 km² big, they belong to the Nunavut province distant of 950 km but are only 100 km away from Quebec.

[2D view](#)

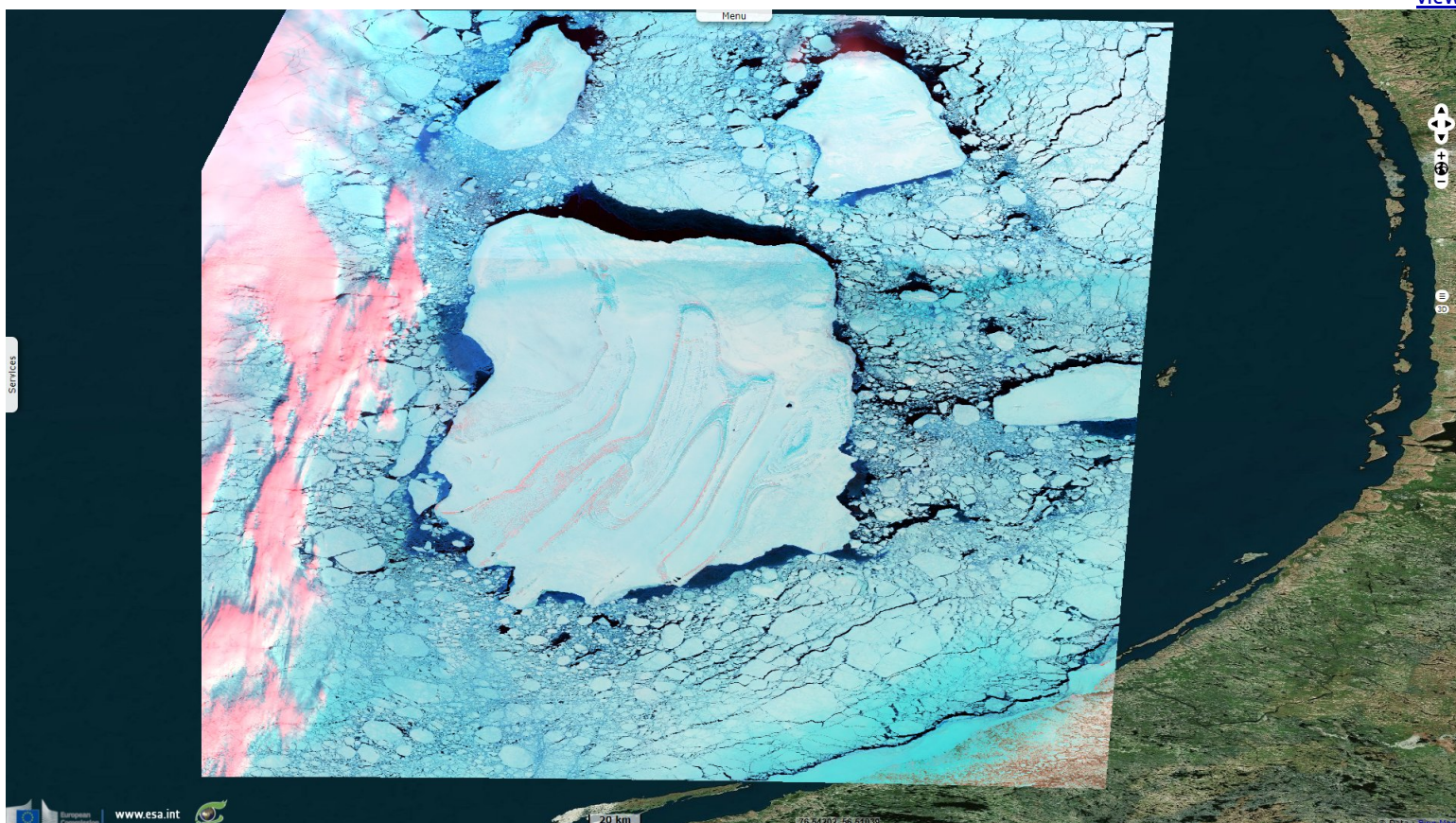
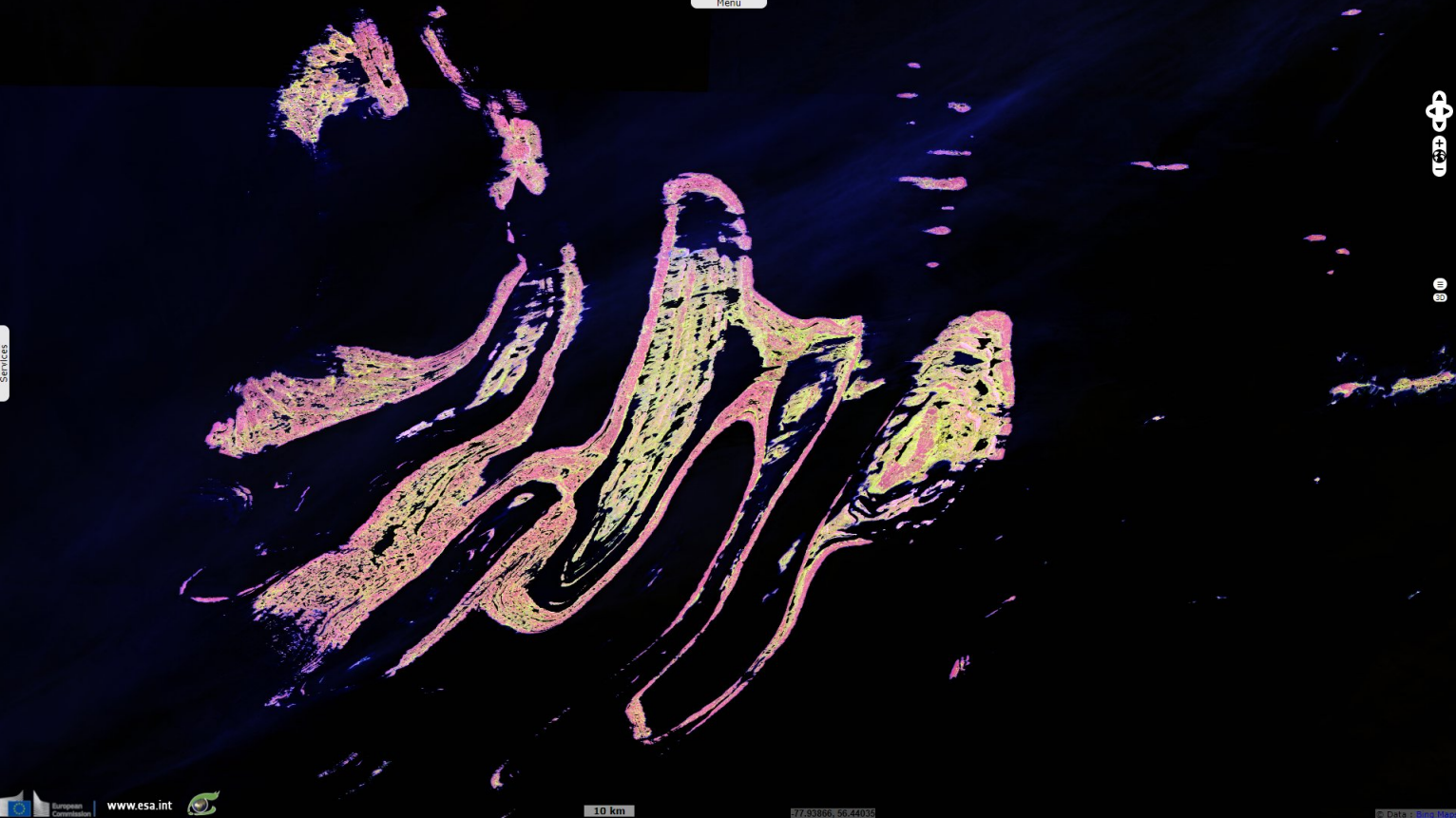


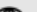








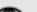


Fig. 3 - S2 (31.07.2020) - The oldest part of the Belcher Group, the Kasegalik Formation, was deposited over 2 billion years ago. [2D view](#)



Fig. 4 - S1 (18.09.2020) - The Belcher Island support 900 inhabitants and almost as many caribous. [2D view](#)



*The views expressed herein can in no way be taken to reflect the official opinion of the European Space Agency or the European Union.
Contains modified Copernicus Sentinel data 2021, processed by VisioTerra.*

More on European Commission space:							
More on ESA:				S-1 website	S-2 website	S-3 website	
More on Copernicus program:				Scihub portal	Cophub portal	Inthub portal	Colhub portal
More on VisioTerra:				Sentinel Vision Portal	Envisat+ERS portal	Swarm+GOCE portal	CryoSat portal