

Kata Tjuta / Olgas, Australia

Sentinel-2 MSI acquired on **11 June 2019** at 01:27:21 UTC

Sentinel-2 MSI acquired on **23 December 2019** at 01:27:09 UTC

Sentinel-1 CSAR IW acquired on **25 December 2019** at 20:43:14 UTC

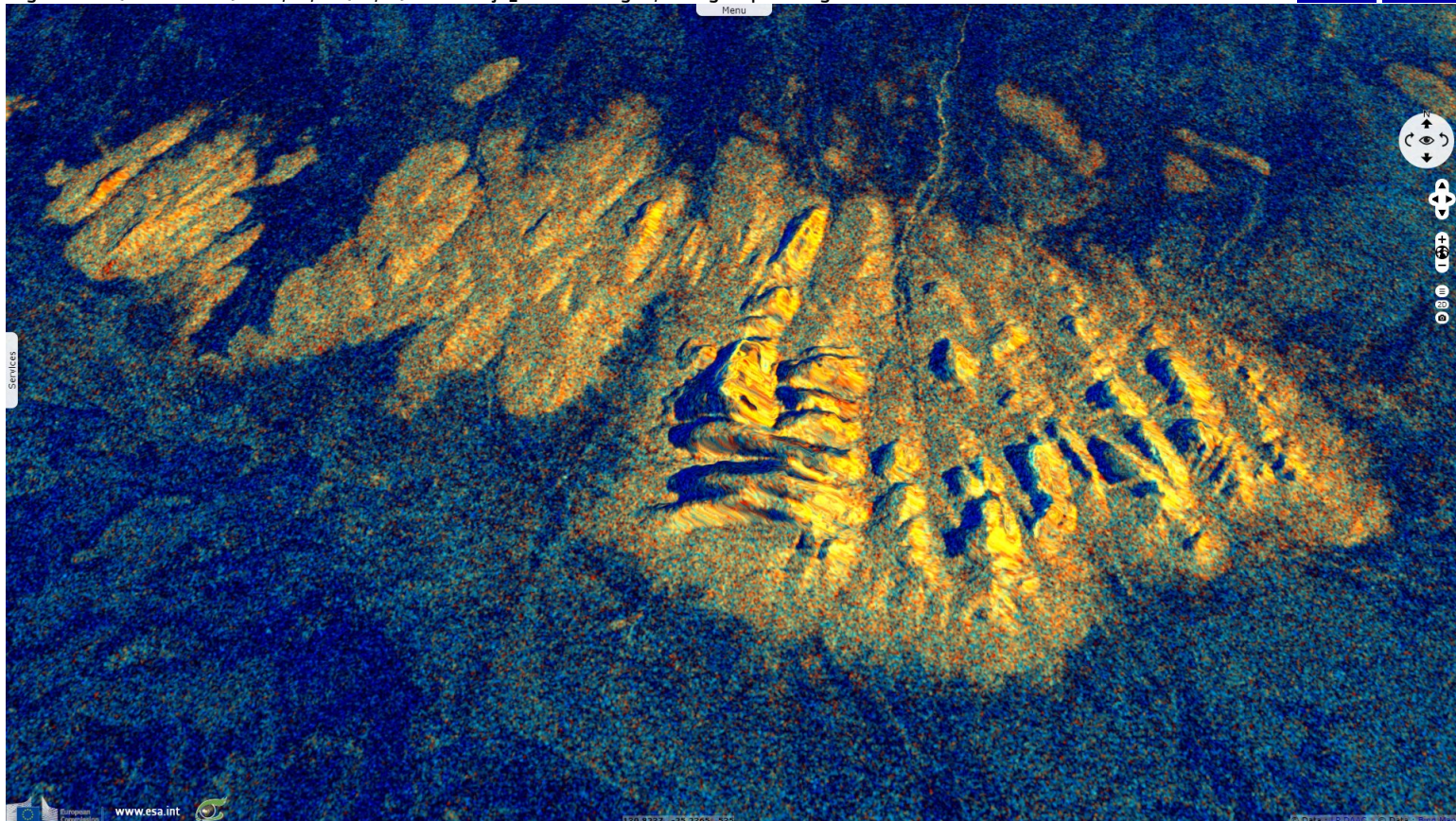
Author(s): Sentinel Vision team, VisioTerra, France - syp@visioterra.fr

Keyword(s): Land, mountain, geology, desert, UNESCO World Heritage site, National Park, Australia

[2D Layerstack](#)

Fig. 1 - S1 (25.12.2019) - vv,vh,ndi(vh,vv) - Kata Tjuta or the Olgas, is a group of large of domed rock formations in Australia.

[2D view](#) [3D view](#)



These bornhardts are made of cobbles & boulders of varying rock types including granite & basalt, cemented by a matrix of sandstone.

Fig. 2 - S1 (25.12.2019) - neg(vh,vv,vh) composite - The highest inselberg, Mount Olga, is 1066m high, ~546m above the plain.

[3D view](#)

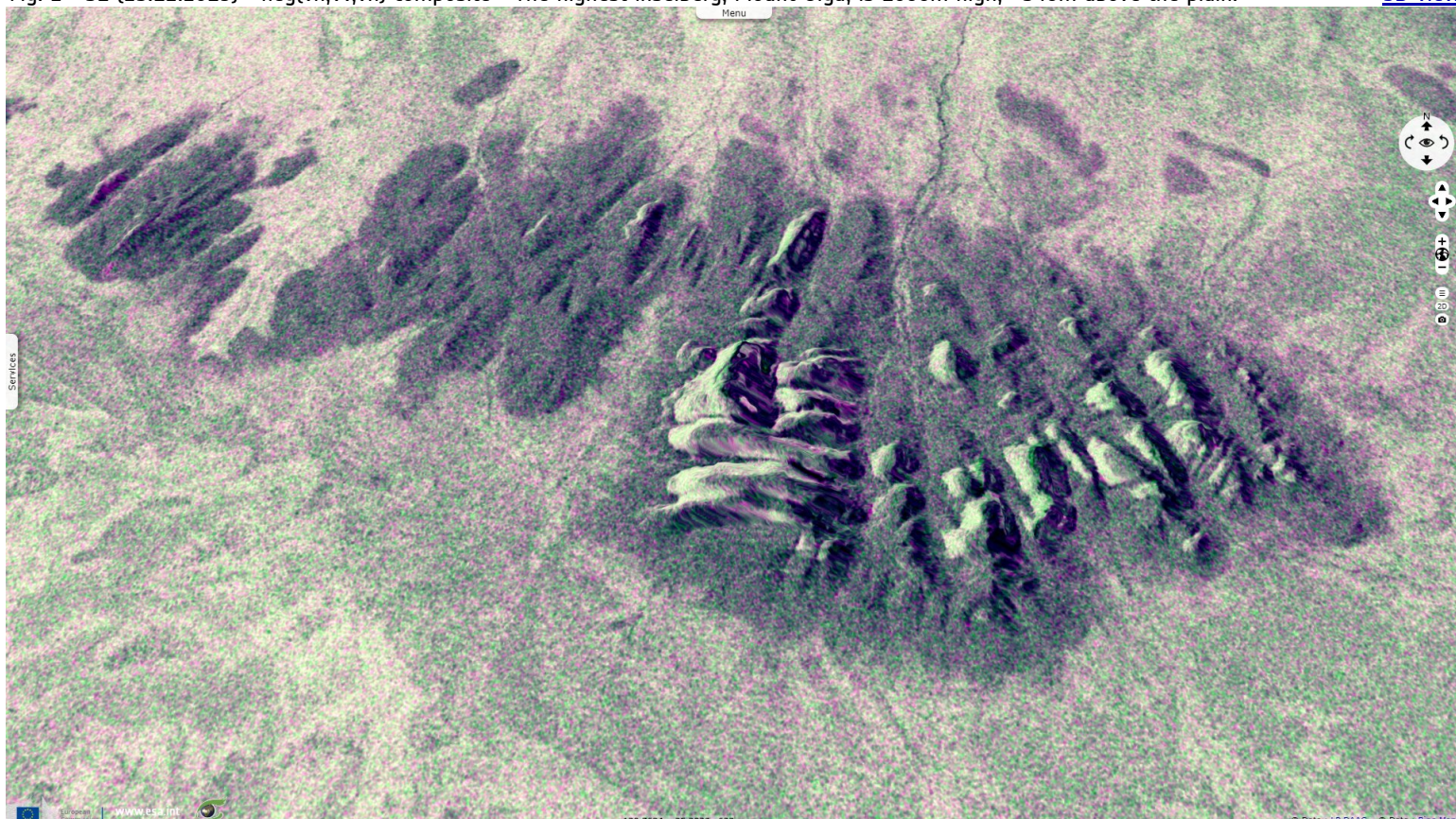


Fig. 3 - S2 (23.12.2019) - 8,4,3 colour composite - Lying in the middle of the Australian desert, these 36 domes formed ~600 myears ago. [3D view](#)

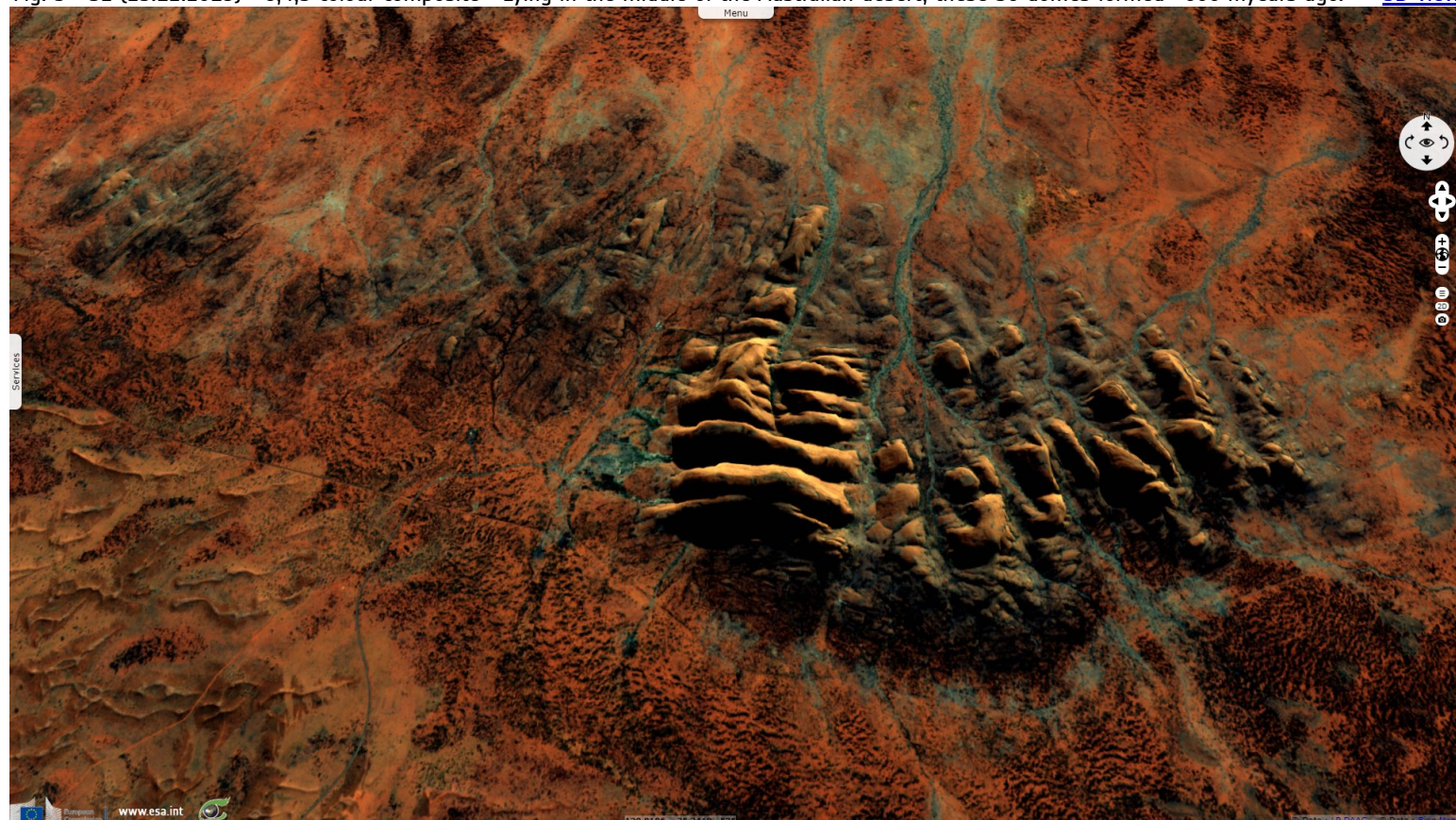
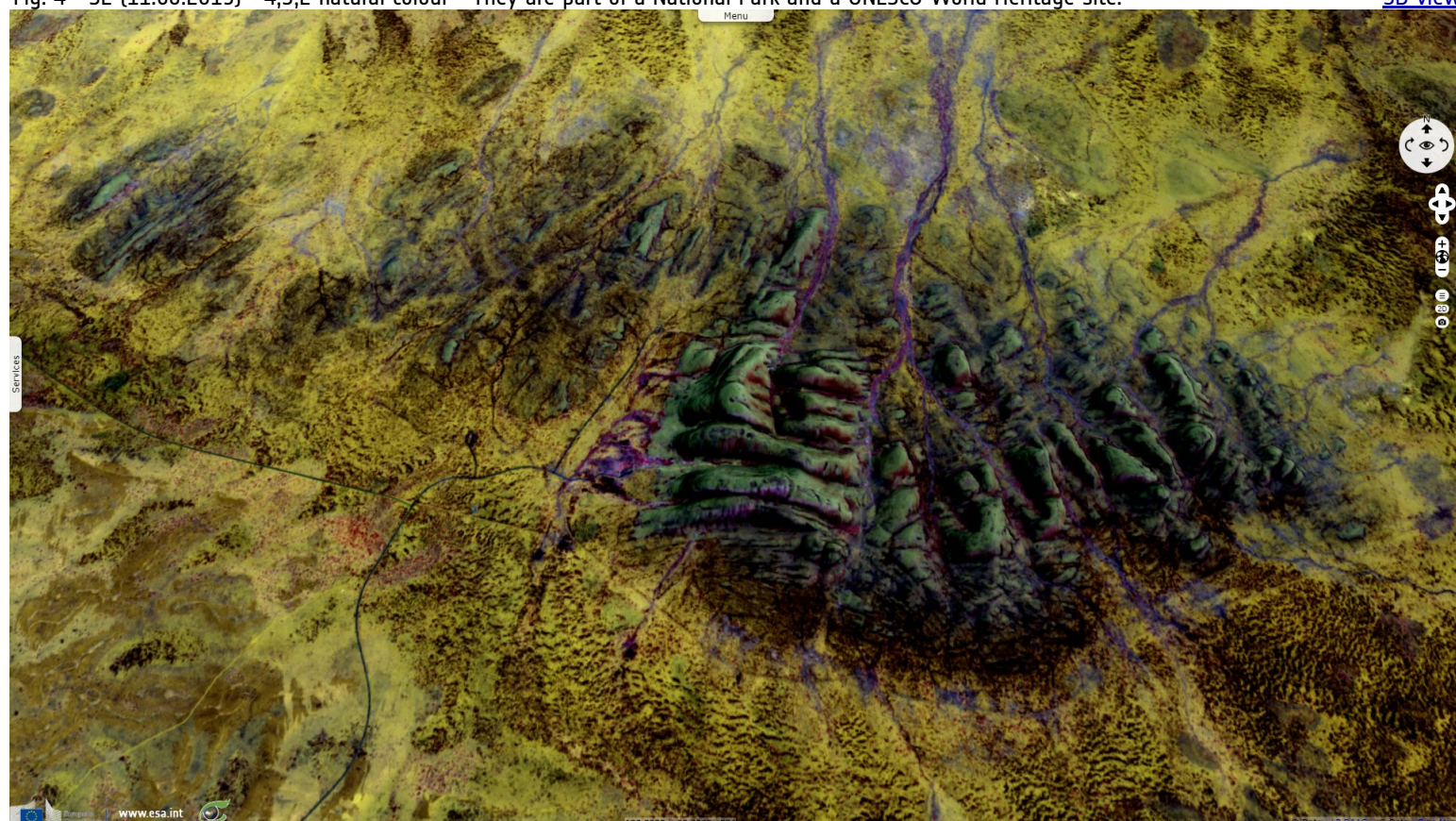








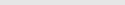





Fig. 4 - S2 (11.06.2019) - 4,3,2 natural colour - They are part of a National Park and a UNESCO World Heritage site. [3D view](#)



*The views expressed herein can in no way be taken to reflect the official opinion of the European Space Agency or the European Union.
Contains modified Copernicus Sentinel data 2019, processed by VisioTerra.*

More on European Commission space:							
More on ESA:				S-1 website	S-2 website	S-3 website	
More on Copernicus program:				Scihub portal	Cophub portal	Inthub portal	Colhub portal
More on VisioTerra:				Sentinel Vision Portal	Envisat+ERS portal	Swarm+GOCE portal	CryoSat portal