



[3D Layerstack](#)

Fessenheim nuclear power plant, first French PWR, about to close

Sentinel-2 MSI acquired on 21 March 2019 at 10:30:21 UTC

Sentinel-1 CSAR IW acquired on 23 March 2019 at 05:42:49 UTC

Author(s): Sentinel Vision team, VisioTerra, France - svp@visioterra.fr

Keyword(s): Climate change, global warming, greenhouse gas, non-renewable energy, power plant, infrastructure, land, river, France

Fig. 1 - S2 (21.03.2019) - 4,3,2 natural colour - Fessenheim nuclear power plant is built along the Grand Canal d'Alsace, next to the Rhine. [2D view](#)



It is located in the Alsace plain, north of Mulhouse in the Rhine graben between the Vosges (France) & Black Forest (Germany) rift flank ranges.

Fig. 2 - S1 (23.03.2019) - vv,vh,ndi(vh,vv) colour composite - Its two 900MW Pressurized Water Reactors were commissioned in 1977. [2D view](#)

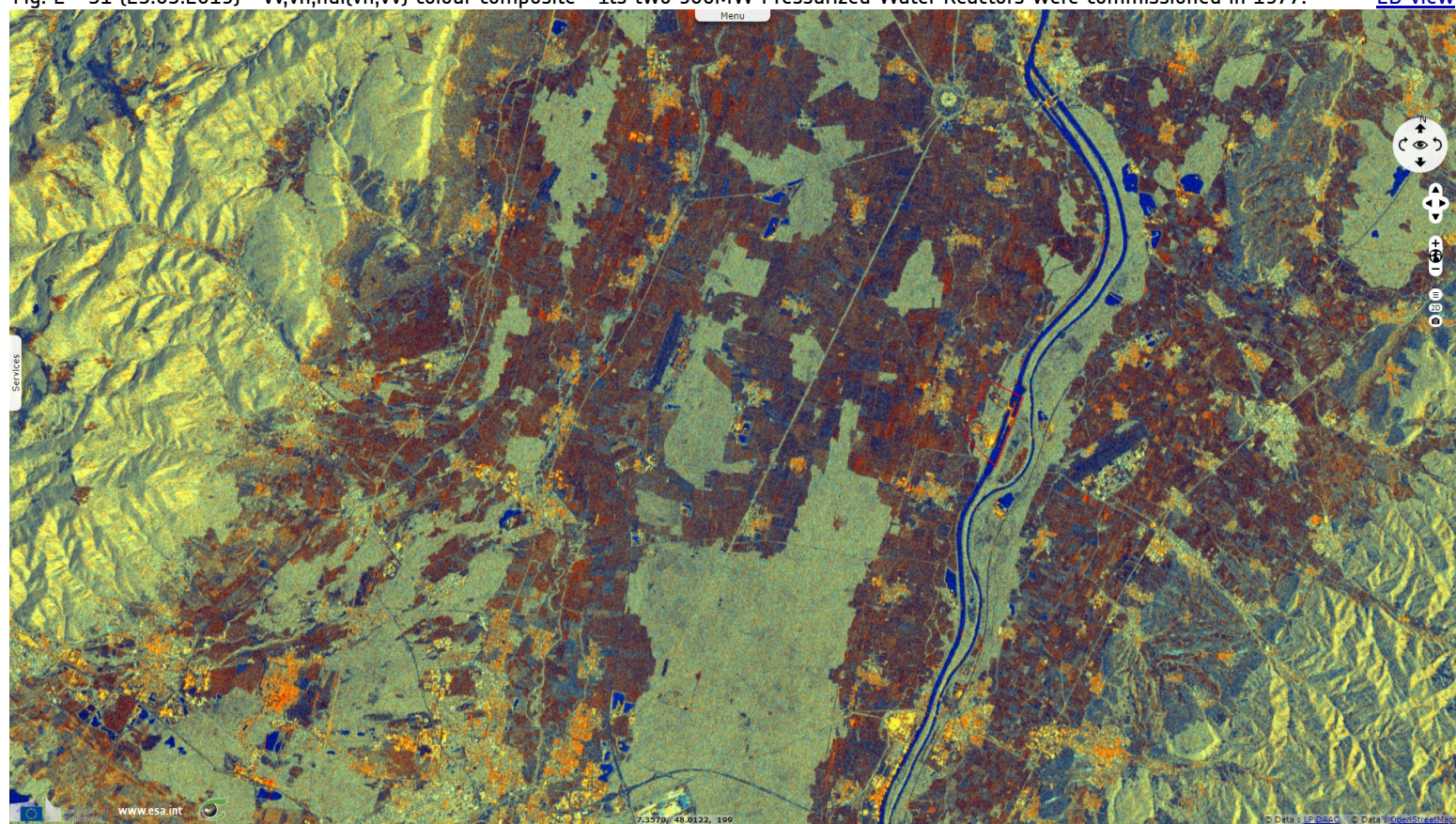


Fig. 3 - They have produced 11 TWh yearly until they are stopped on 22 February & June 2020. [2D view](#)

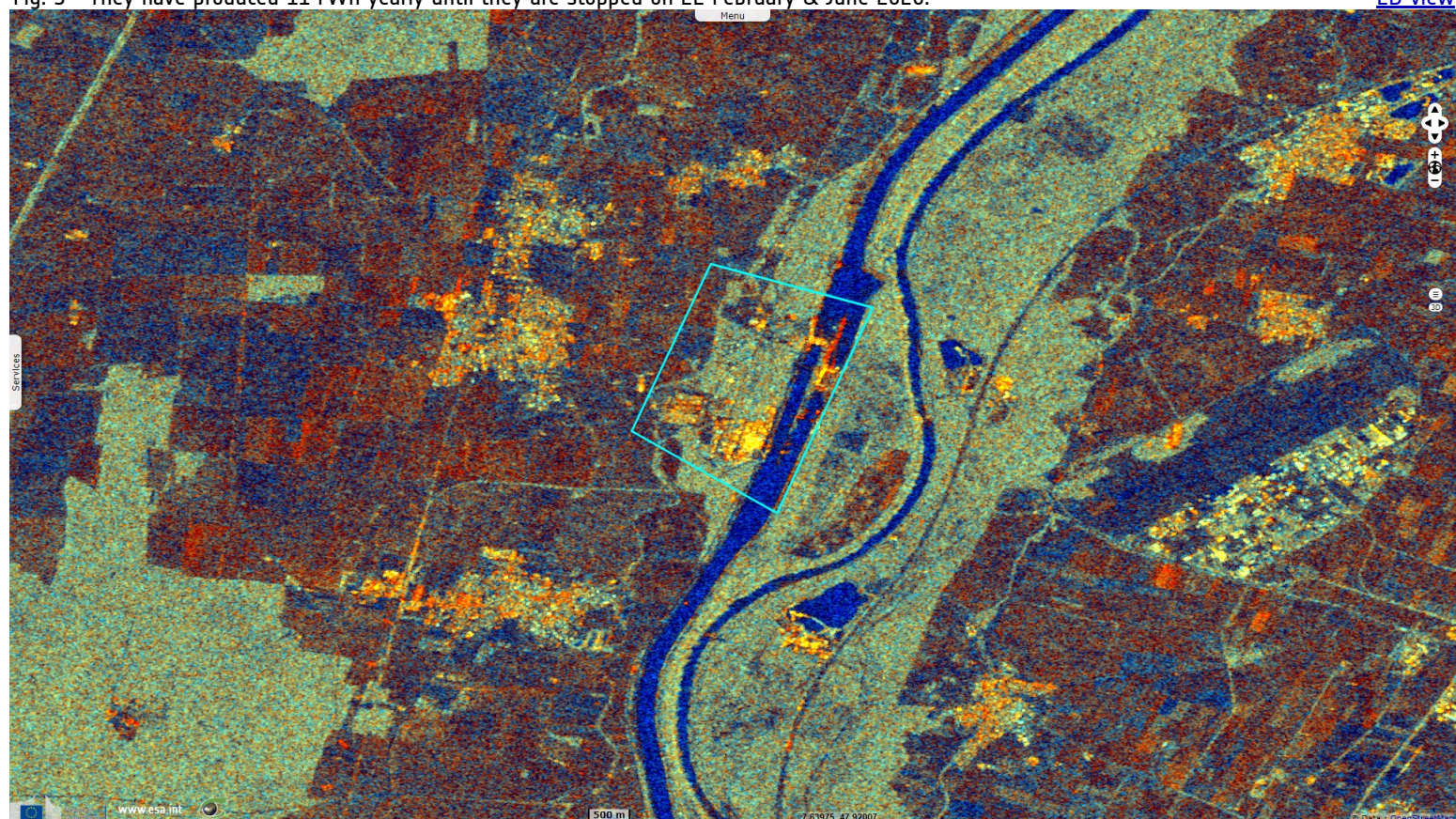














Fig. 4 - In its lifetime, it encountered several events up to anomaly level, 2nd out of the 9 grades of the International Nuclear Event Scale [2D view](#)



*The views expressed herein can in no way be taken to reflect the official opinion of the European Space Agency or the European Union.
Contains modified Copernicus Sentinel data 2019, processed by VisioTerra.*

| | | | | | | | |
|------------------------------------|---|---|---|--|------------------------------------|-----------------------------------|--------------------------------|
| More on European Commission space: |  |  |  | | | | |
| More on ESA: |  |  |  | S-1 website | S-2 website | S-3 website | |
| More on Copernicus program: |  |  |  | SciHub portal | Cophub portal | Inthub portal | Colhub portal |
| More on VisioTerra: |  |  |  | Sentinel Vision Portal | Envisat+ERS portal | Swarm+GOCE portal | CryoSat portal |



Funded by the EU and ESA

SED-610-SentinelVision

