

Seasonal changes in Volta Basin

Sentinel-3 OLCI FR acquired on **09 November 2016** at 09:43:42 UTC
Sentinel-1 CSAR IW acquired on **09 November 2016** from 18:17:43 to 18:18:37 UTC
Sentinel-1 CSAR IW acquired on **20 January 2017** from 18:17:39 to 18:18:33 UTC
Sentinel-3 OLCI FR acquired on **25 January 2017** at 09:47:25 UTC

Author(s): Sentinel Vision team, VisioTerra, France - svp@visioterra.fr

Keyword(s): land, dam, seasonal change, bush, savanna, sediments, coastal erosion, renewable energy, lake Volta, Ghana, Togo



[2D Layerstack](#)

Fig. 1 - OLCI (2016.11.09) - Lake Volta during wet season, it shows high sediments content in water courses - 8-6-3 natural colour.

[2D view](#)

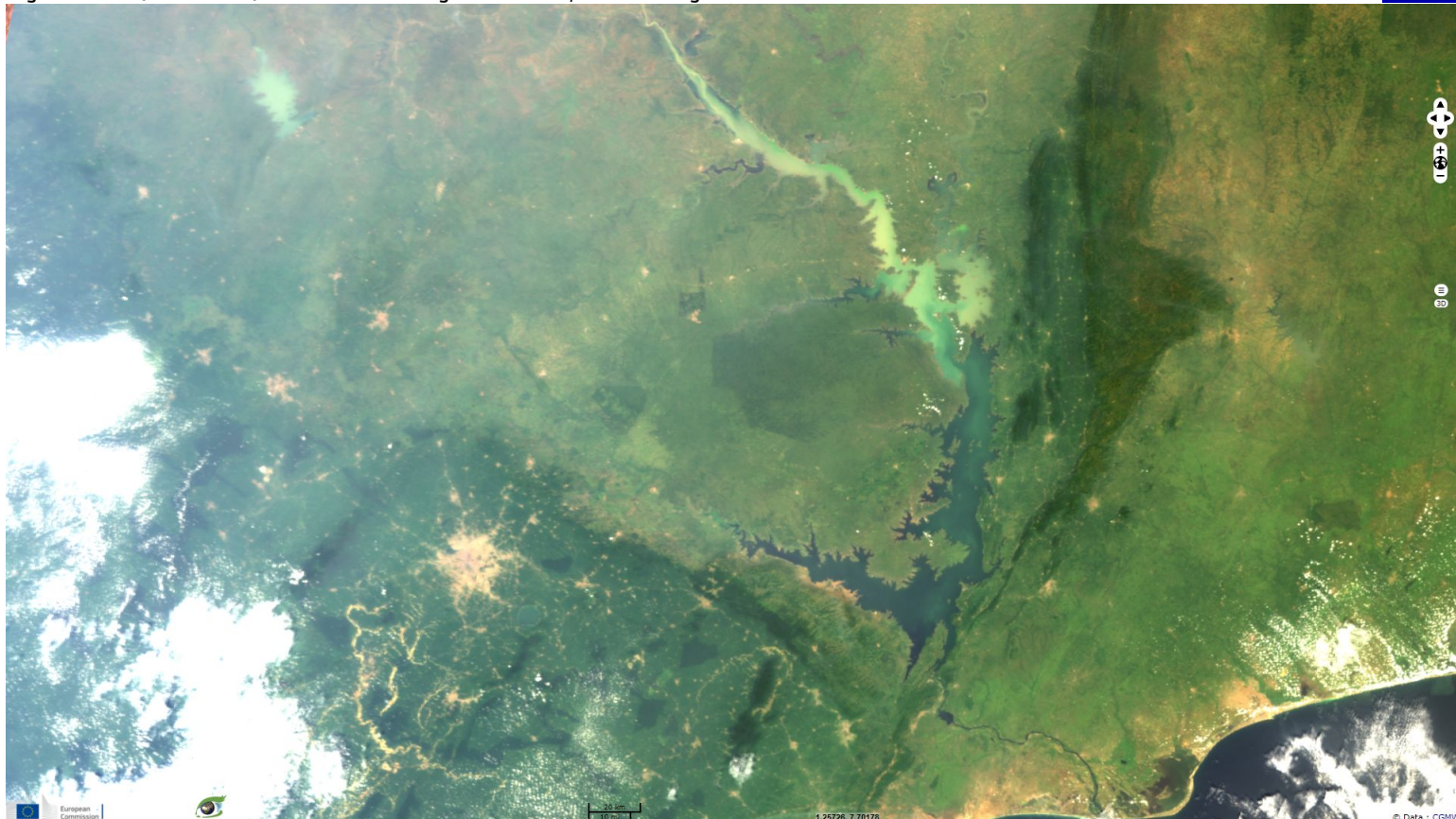


Fig. 2 - OLCI (2017.01.25) - Lake Volta during the dry season (December to February).

[2D view](#)

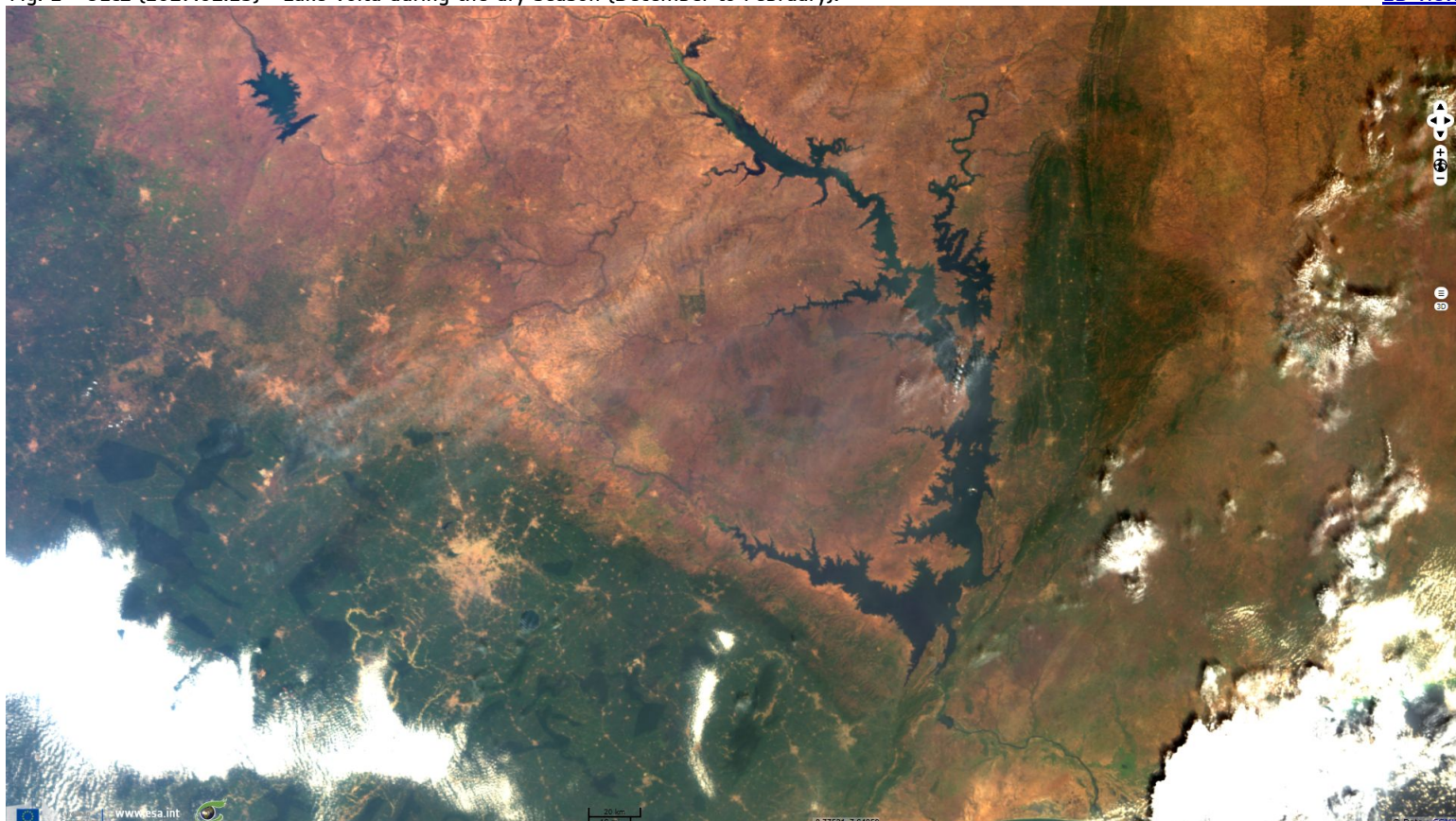


Fig. 3 - S1 (2016.11.09) - Lake Volta is by far the World's largest artificial reservoir by area with 8500km² - VV/VH/NDI(VH,VV) composite. [2D view](#)

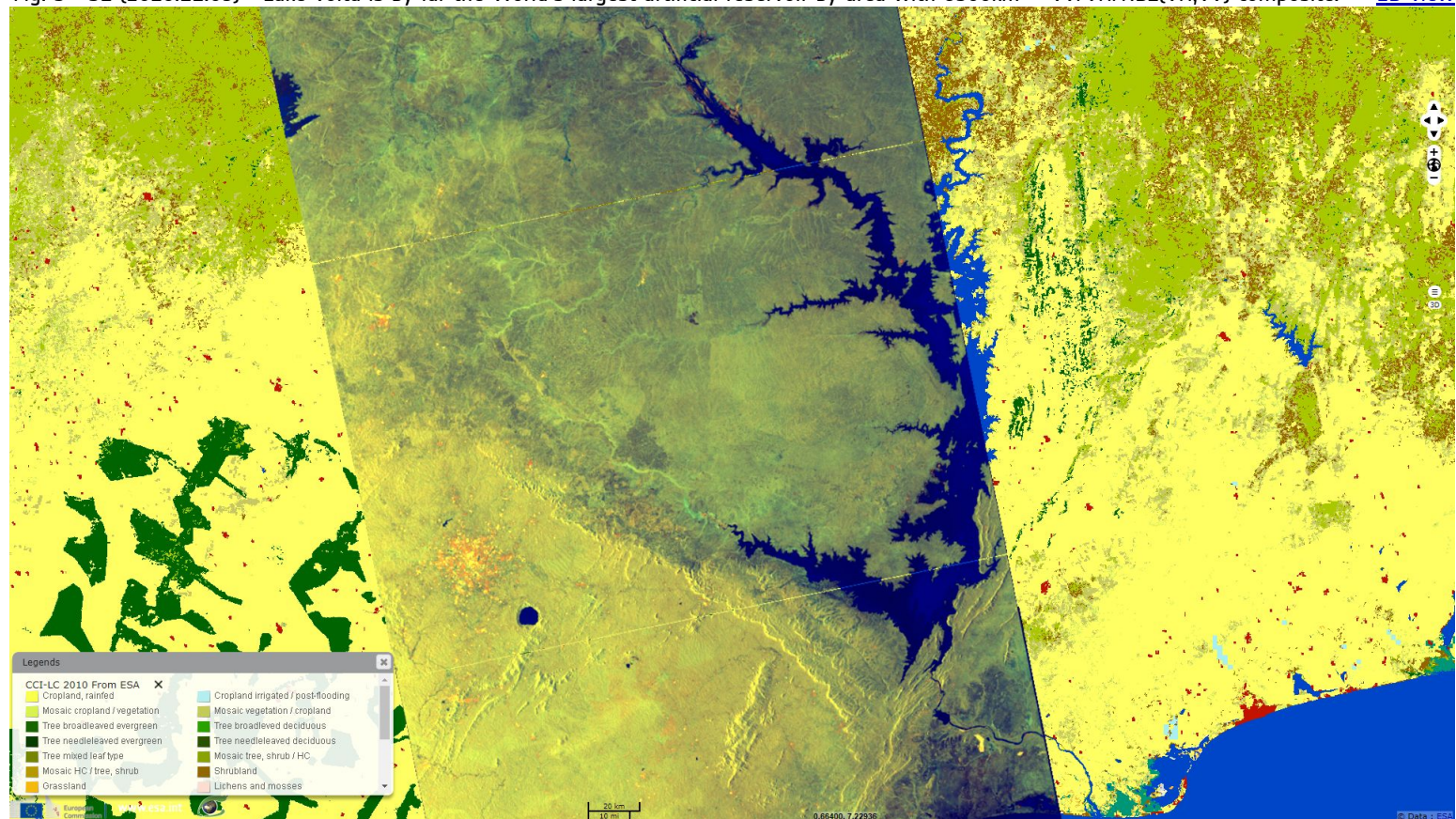


Fig. 4 - S1 (2016.01.20) - While critical for Ghana electricity production, Lake Volta is accused of inducing seismicity and shoreline erosion. [2D view](#)

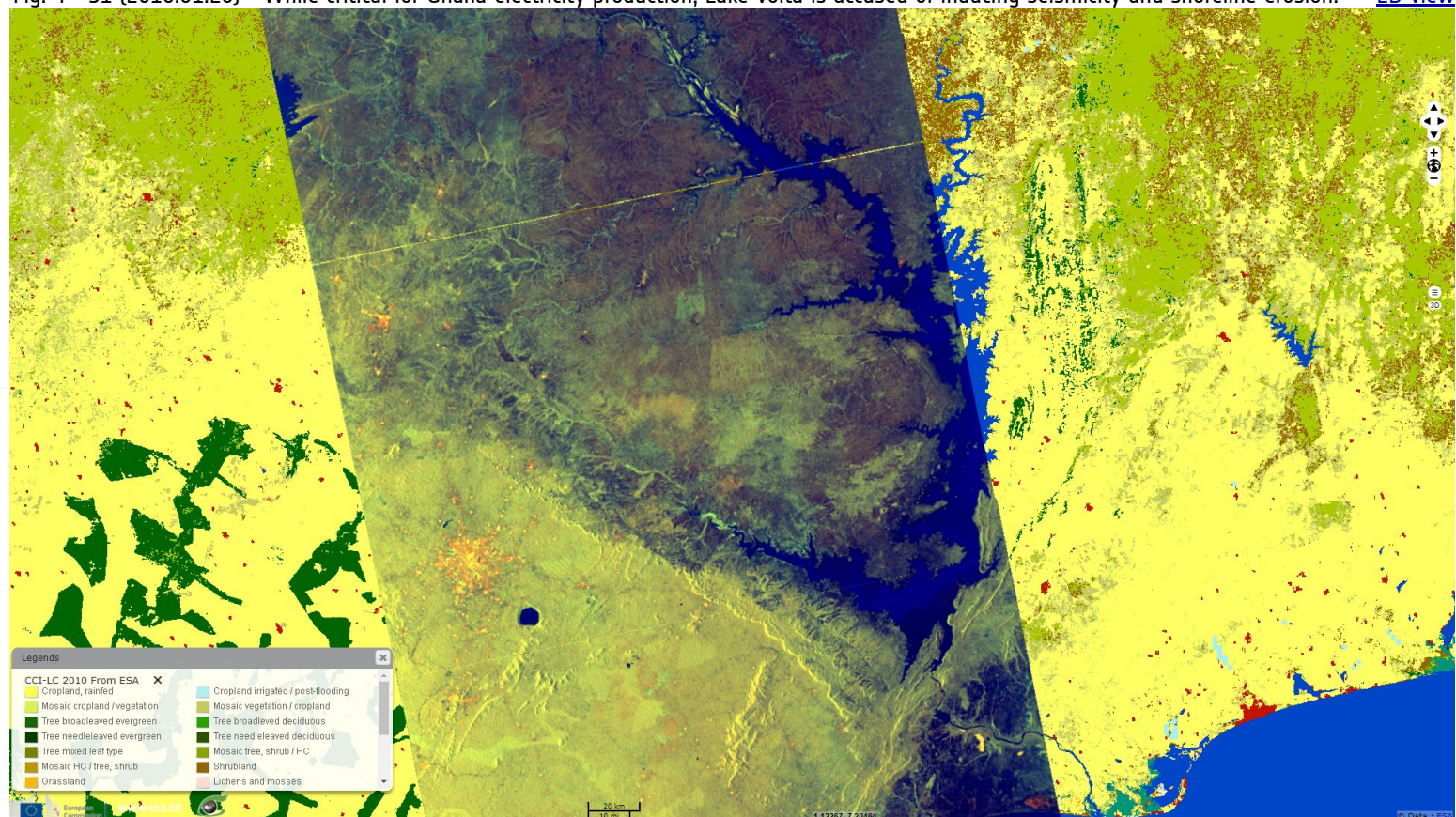


Fig. 5 - S1 (2016.11.09) - Detail in the northernmost part of Lake Volta.

[2D view](#)

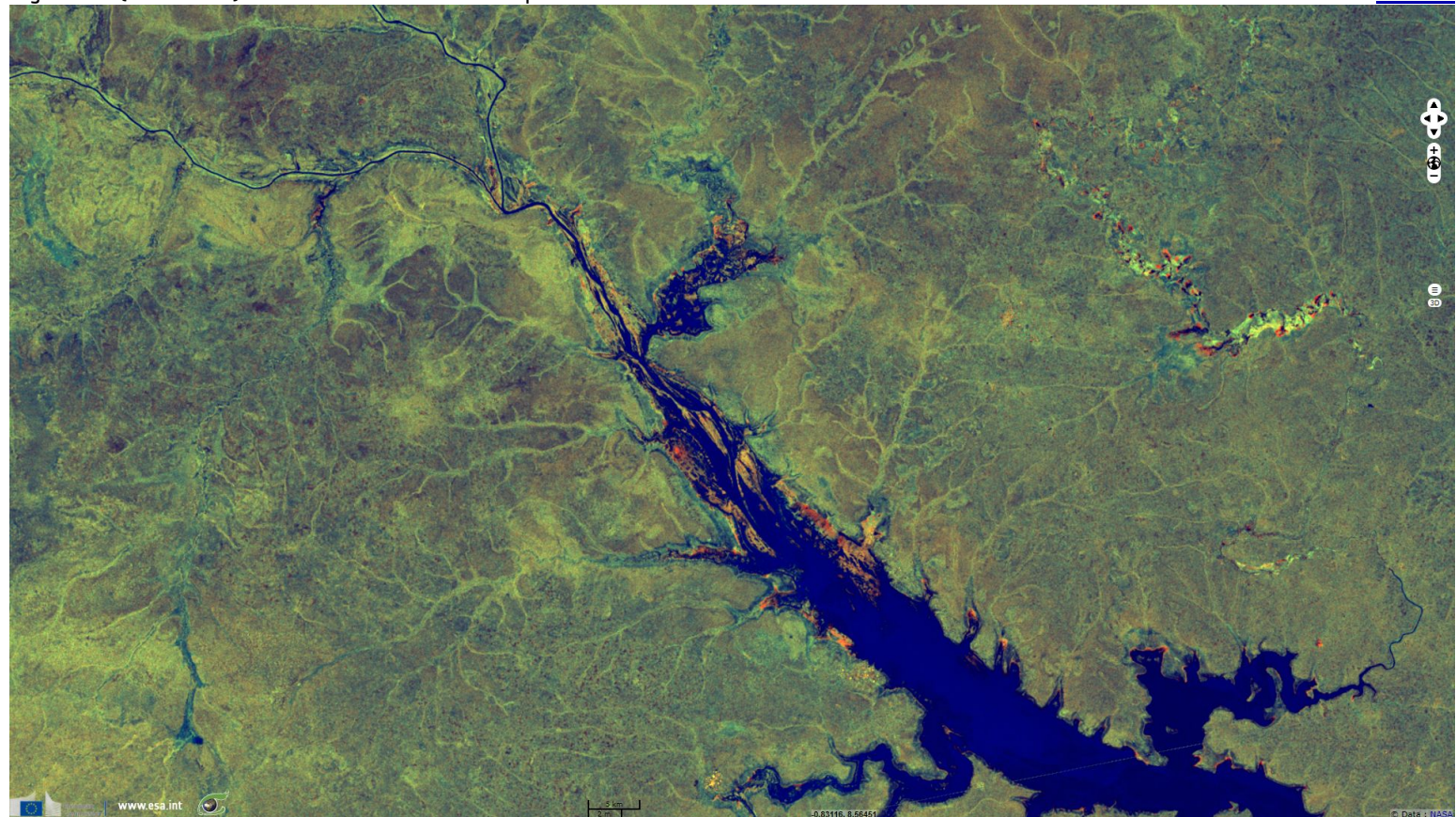


Fig. 6 - S1 (2017.01.20) - One can observe a striking contrast in this region between the wet and dry season.

[2D view](#)

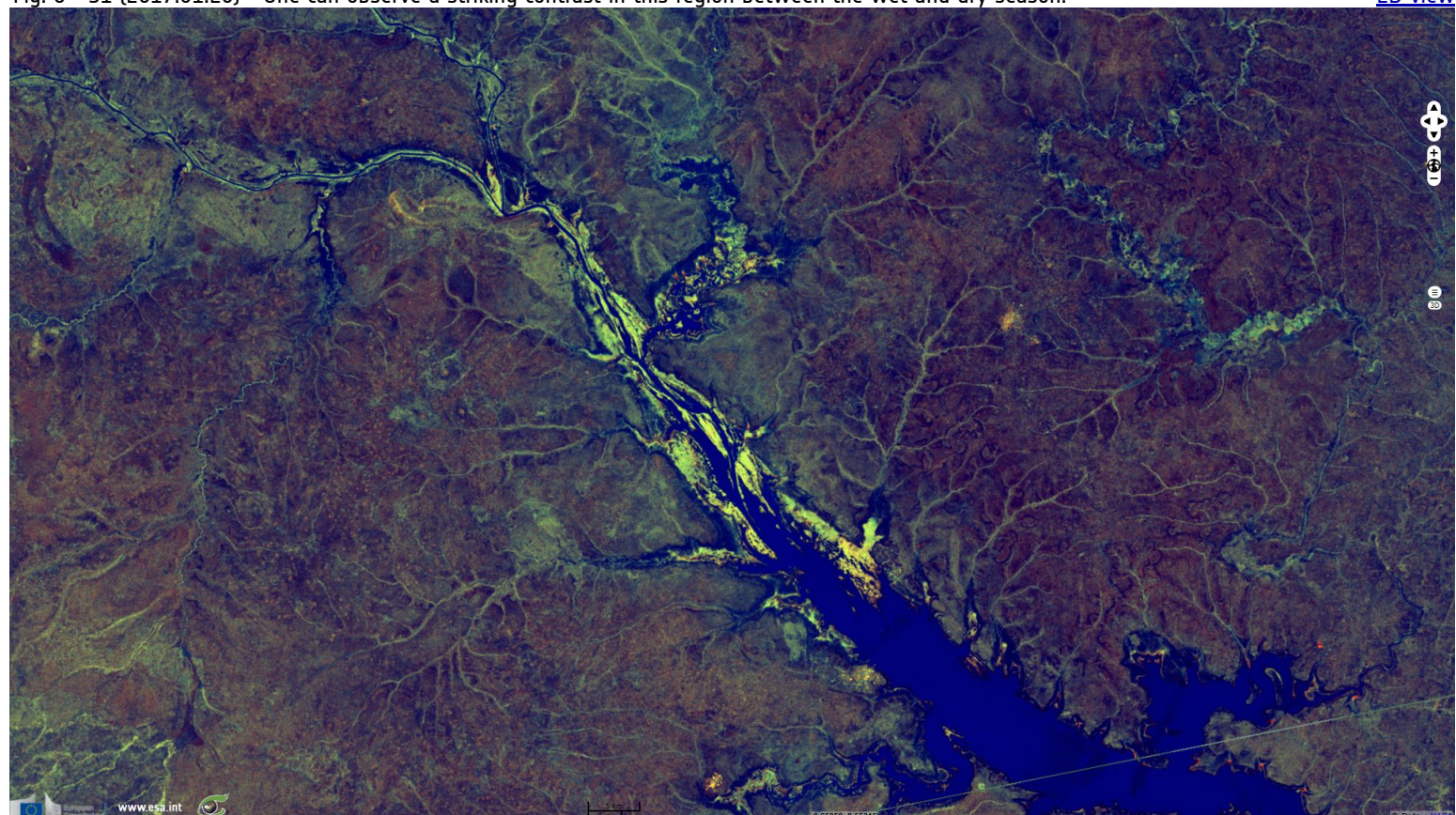
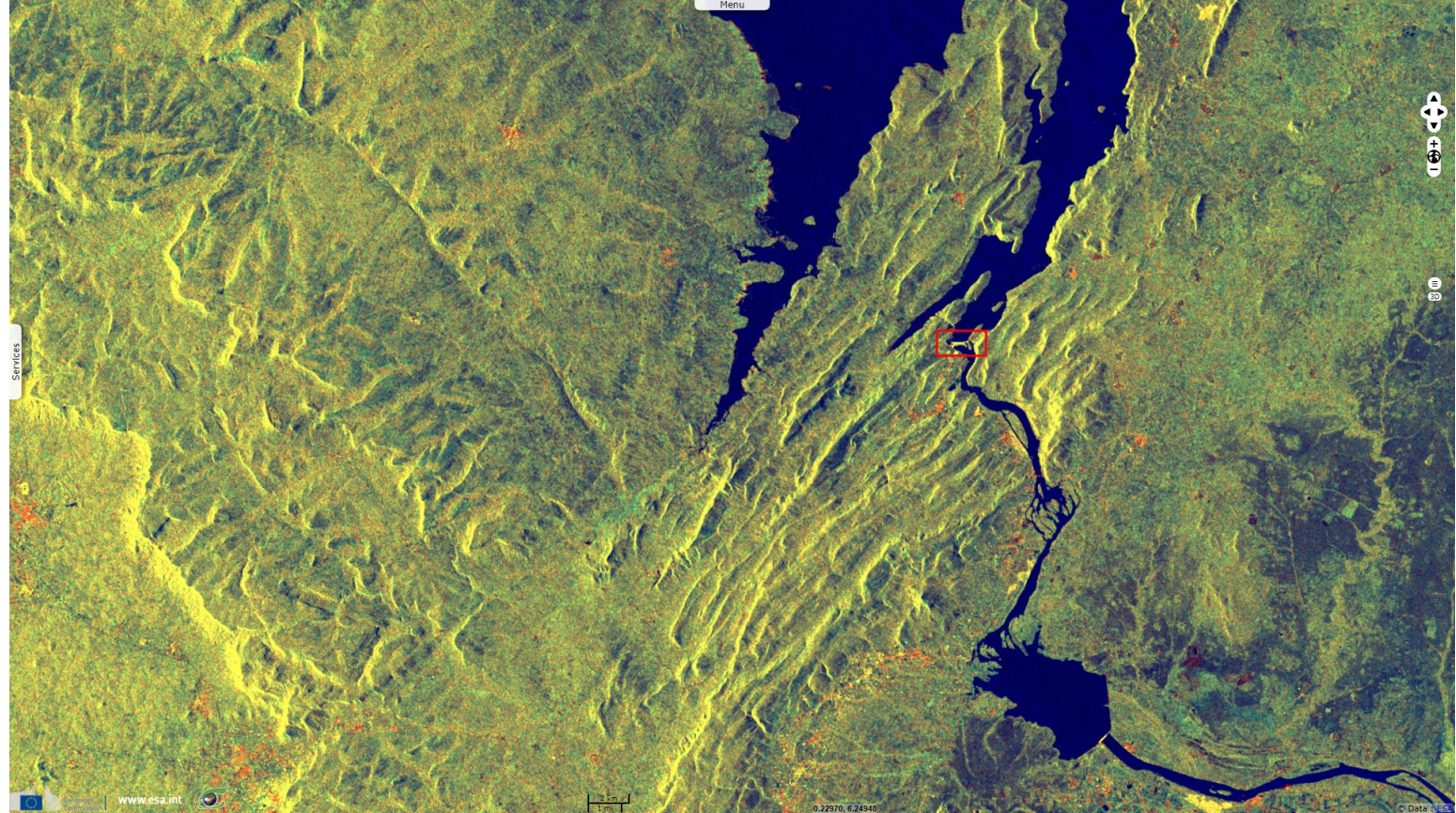














Fig. 7 - Akosombo dam (red) is located near the converging point where the Akwapim-Togo Range meets the Kwahu Plateau. [2D view](#)



The views expressed herein can in no way be taken to reflect the official opinion of the European Space Agency or the European Union.

More on European Commission space:									
More on ESA:				S-1 website	S-2 website	S-3 website			
More on Copernicus program:				SciHub portal	Cophub portal	Inthub portal	Colhub portal		
More on VisioTerra:				Sentinel Vision Portal	Envisat+ERS portal	Swarm+GOCE portal	CryoSat portal	Proba-V portal	