

# Makhtesh Ramon, Israel, World's largest erosion cirque

Sentinel-1 CSAR IW acquired on 11 February 2019 at 15:40:07 UTC  
Sentinel-1 CSAR IW acquired on 23 February 2019 at 15:40:07 UTC  
Sentinel-2 MSI acquired on 25 February 2019 at 08:19:19 UTC  
Sentinel-1 CSAR IW acquired on 07 March 2019 at 15:40:07 UTC

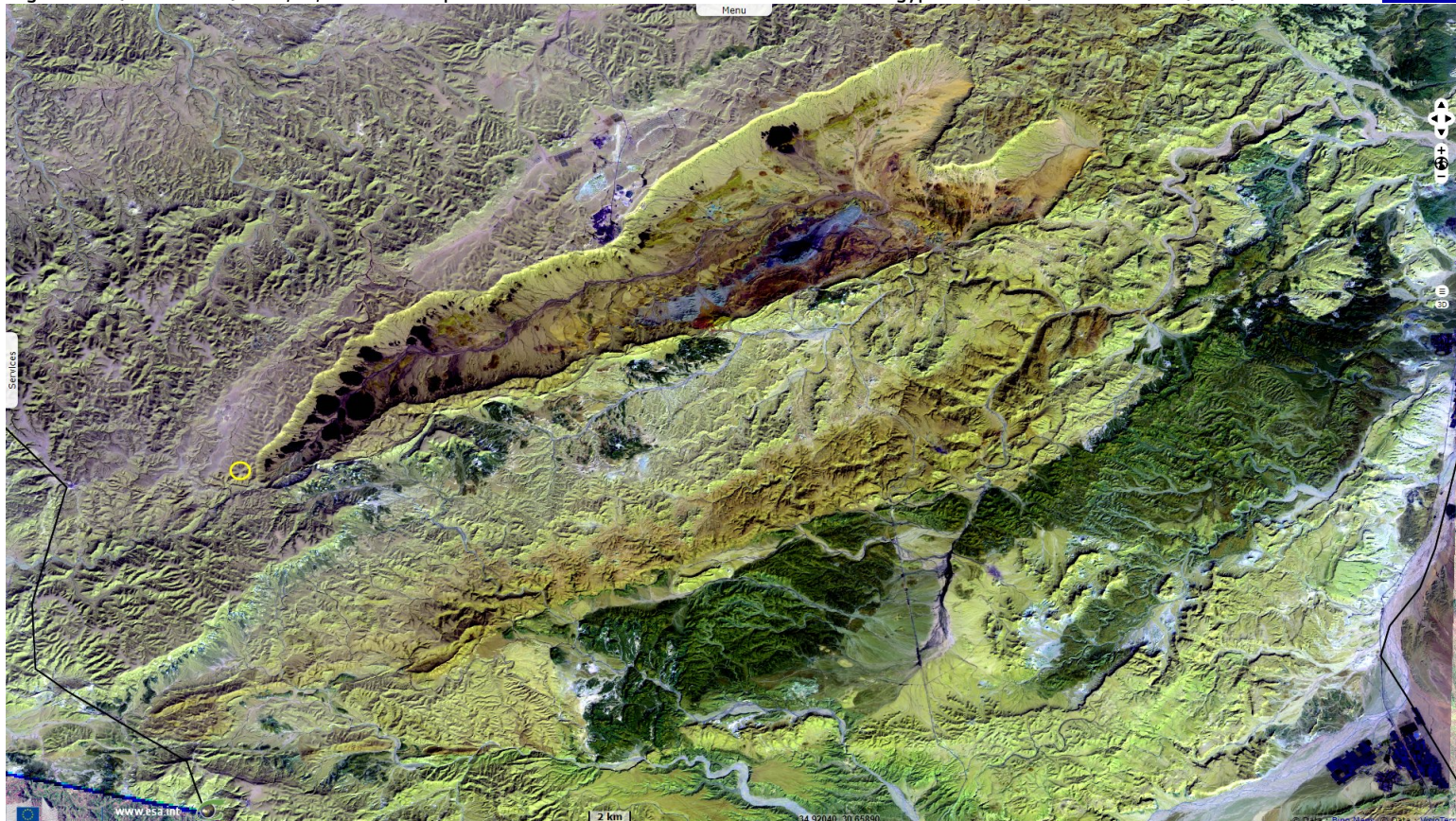
Author(s): Sentinel Vision team, VisioTerra, France - [svp@visioterra.fr](mailto:svp@visioterra.fr)

Keyword(s): Landform, geology, erosion, river, Israel, Negev desert

[2D Layerstack](#)

Fig. 1 - S2 (25.02.2019) - 12,11,2 colour composite - Makhtesh Ramon is located near the Egyptian (west) and Jordanian (east) borders.

[2D view](#)



Being 40 km long, 2–10 km wide and over 500 m deep, Makhtesh Ramon is the largest erosion cirque in the World, the only drained by two rivers.

Fig. 2 - S2 (25.02.2019) - 11,8,2 colour composite - At its S-W end lies the 1037 m high Mt Ramon, highest point in the Negev highlands.

[3D view](#)

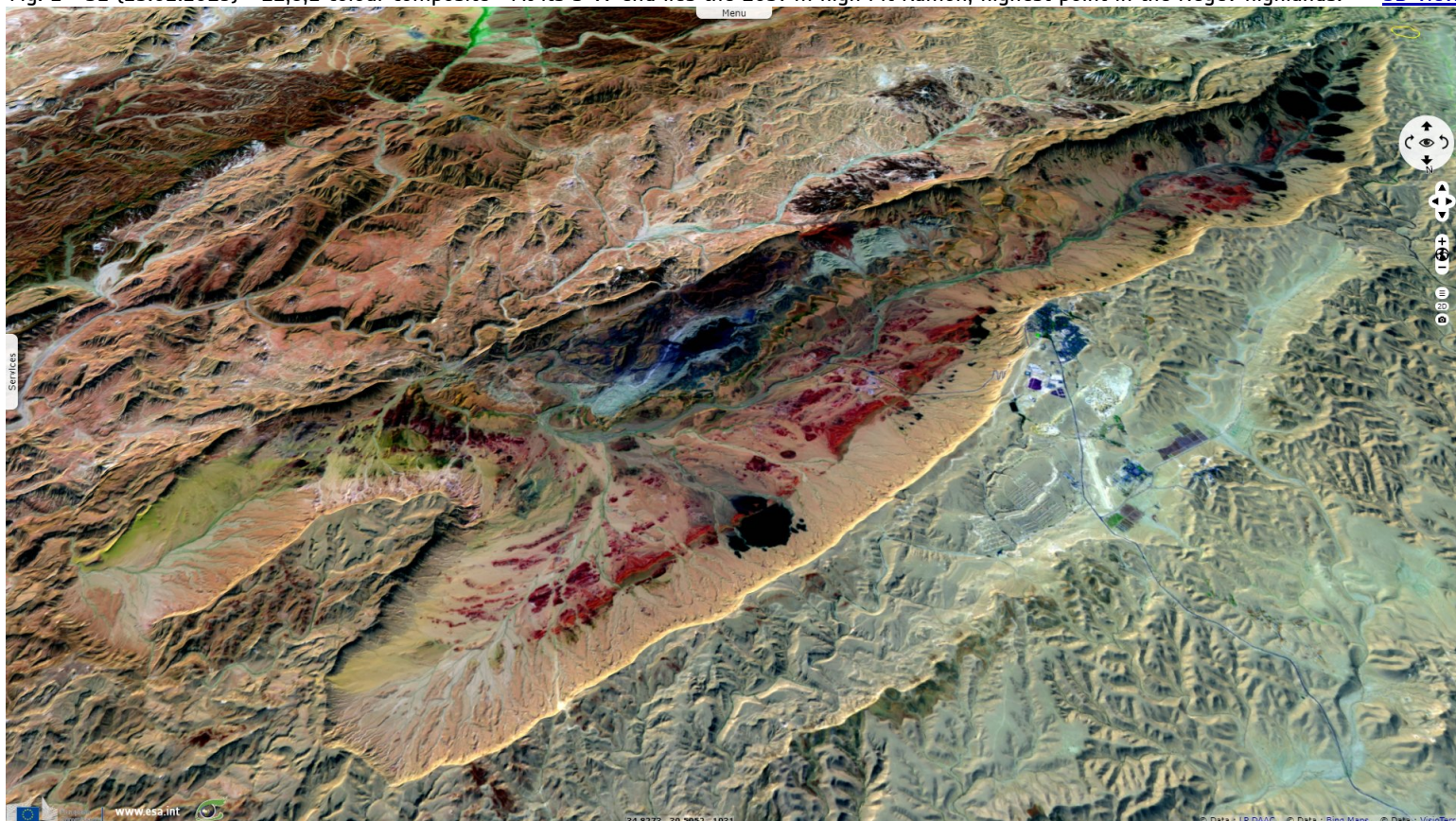




Fig. 3 - S1 (mean 11, 23.02.2019 & 07.03.2019) - neg(vh,vv,vh) - The bottom eroded faster than the walls, revealing 200 Myears old layers. [3D view](#)

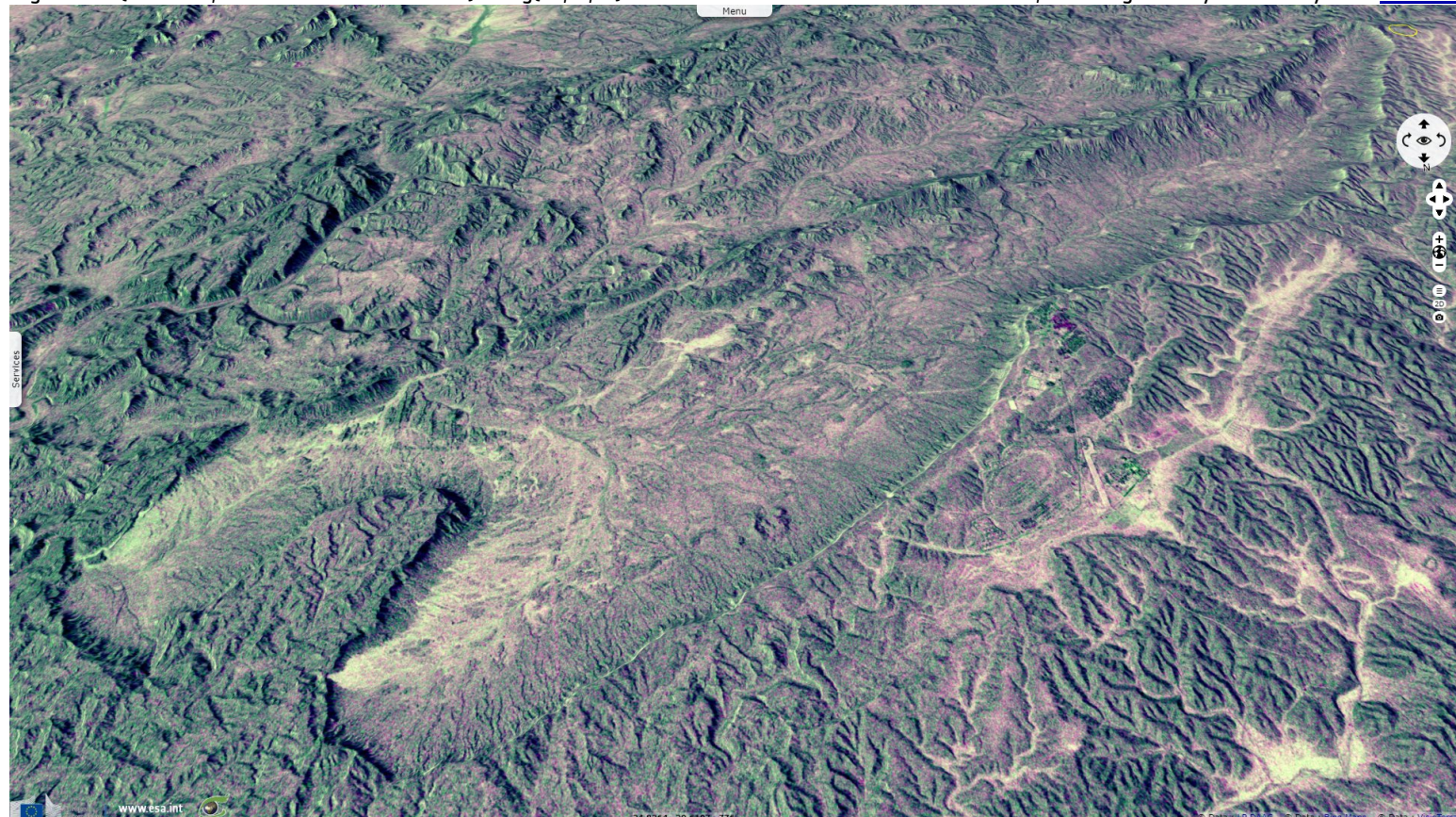
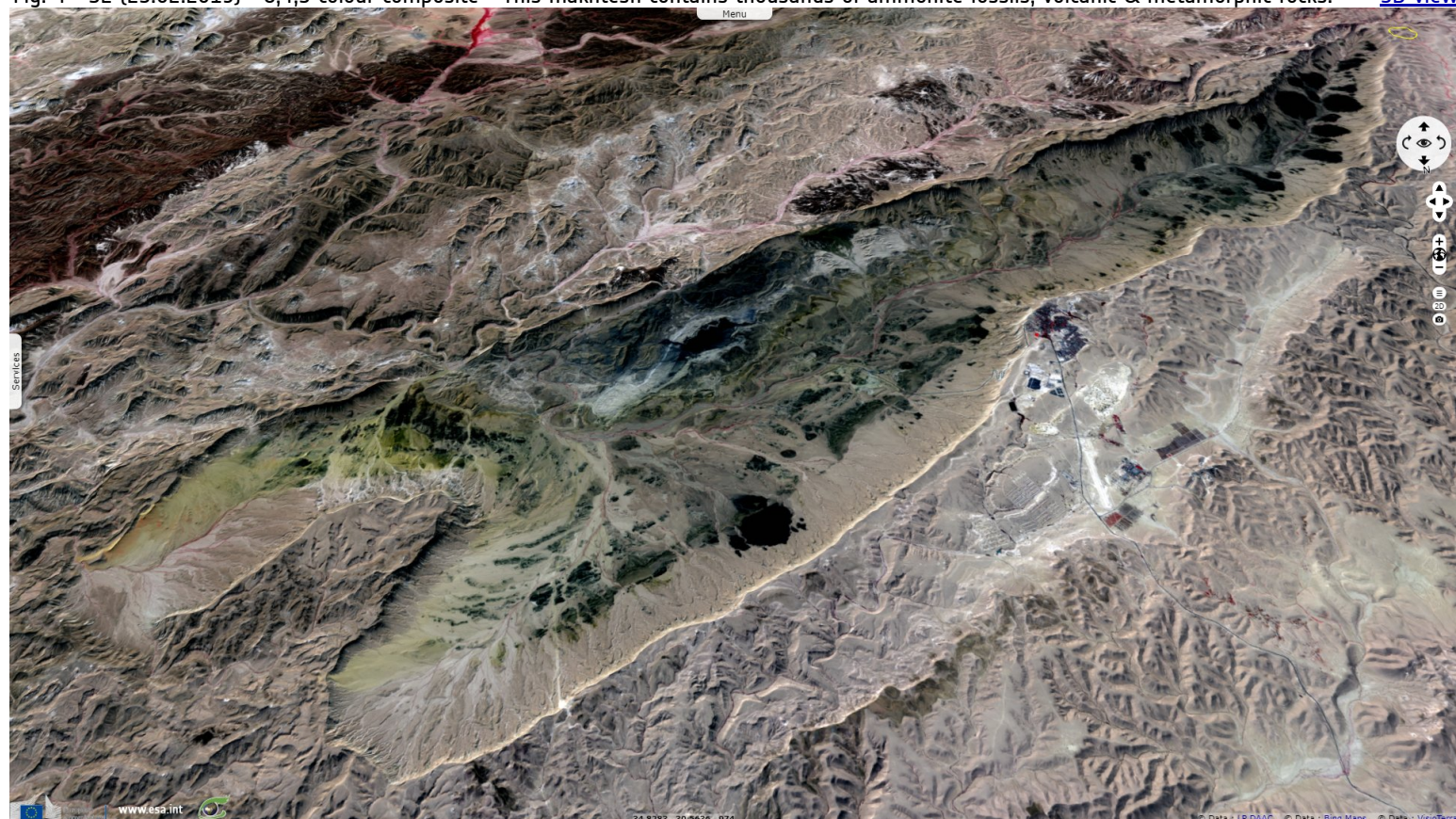














Fig. 4 - S2 (25.02.2019) - 8,4,3 colour composite - This makhtesh contains thousands of ammonite fossils, volcanic & metamorphic rocks. [3D view](#)



*The views expressed herein can in no way be taken to reflect the official opinion of the European Space Agency or the European Union.  
Contains modified Copernicus Sentinel data 2019, processed by VisioTerra.*

More on European Commission space:						
More on ESA:				<a href="#">S-1 website</a>	<a href="#">S-2 website</a>	<a href="#">S-3 website</a>
More on Copernicus program:				<a href="#">SciHub portal</a>	<a href="#">Cophub portal</a>	<a href="#">Inthub portal</a>
More on VisioTerra:				<a href="#">Sentinel Vision Portal</a>	<a href="#">Envisat+ERS portal</a>	<a href="#">Swarm+GOCE portal</a>
					<a href="#">CryoSat portal</a>	