

# Gaborone, boom-town capital city of Botswana

Sentinel-2 MSI acquired on 16 March 2019 at 07:56:51 UTC  
Sentinel-1 CSAR IW acquired on 20 March 2019 at 16:54:52 UTC  
Sentinel-1 CSAR IW acquired on 21 March 2019 at 16:47:26 UTC  
Sentinel-1 CSAR IW acquired on 26 March 2019 at 16:55:14 UTC

Author(s): Sentinel Vision team, VisioTerra, France - [svp@visioterra.fr](mailto:svp@visioterra.fr)

Keyword(s): Urban planning, infrastructure, capital city, Botswana

[2D Layerstack](#)

Fig. 1 - S2 (16.03.2019) - Gaborone is located in south-eastern Botswana, near the Notwani River, only 15 km from the South African border. [2D view](#)

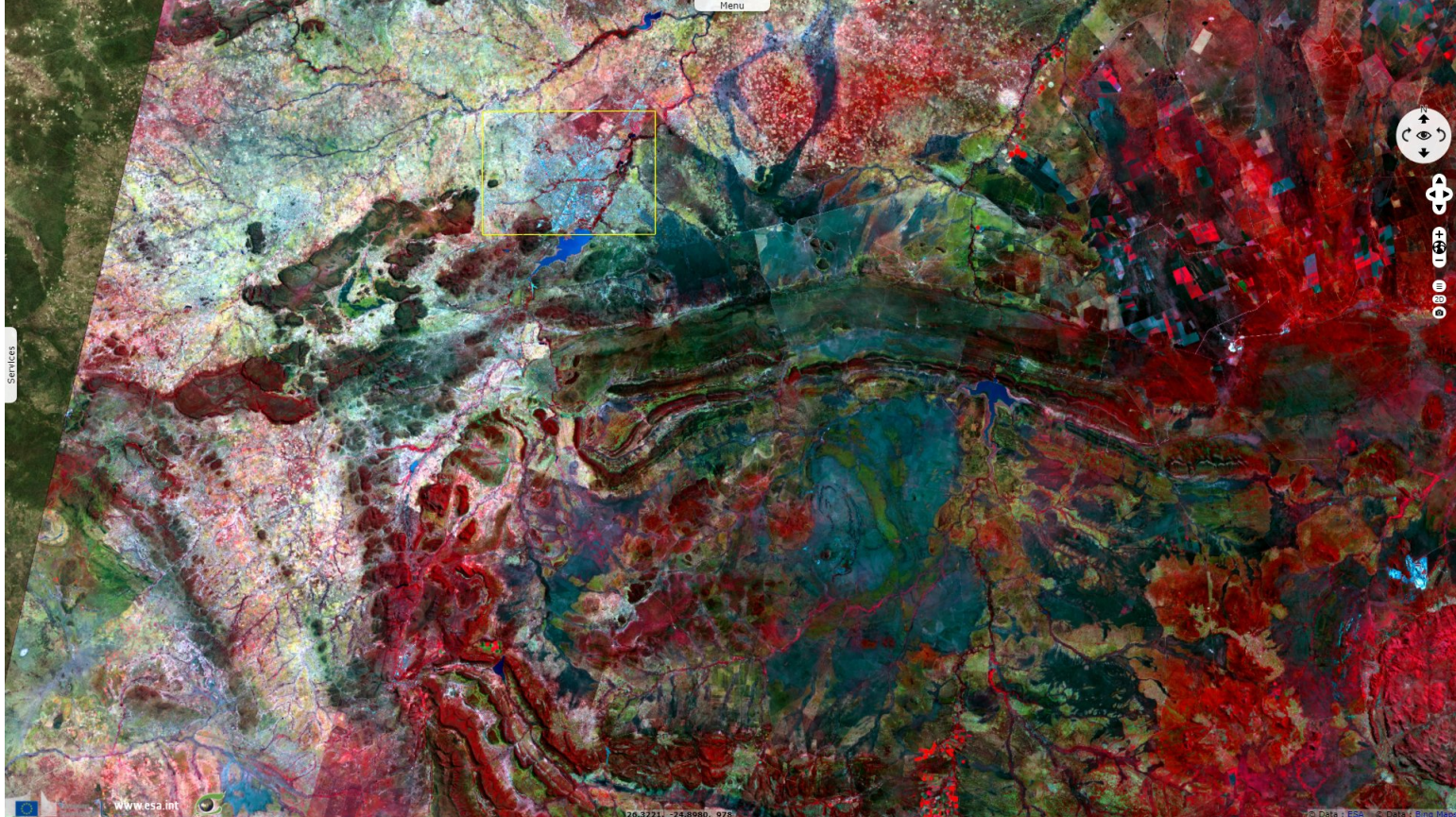
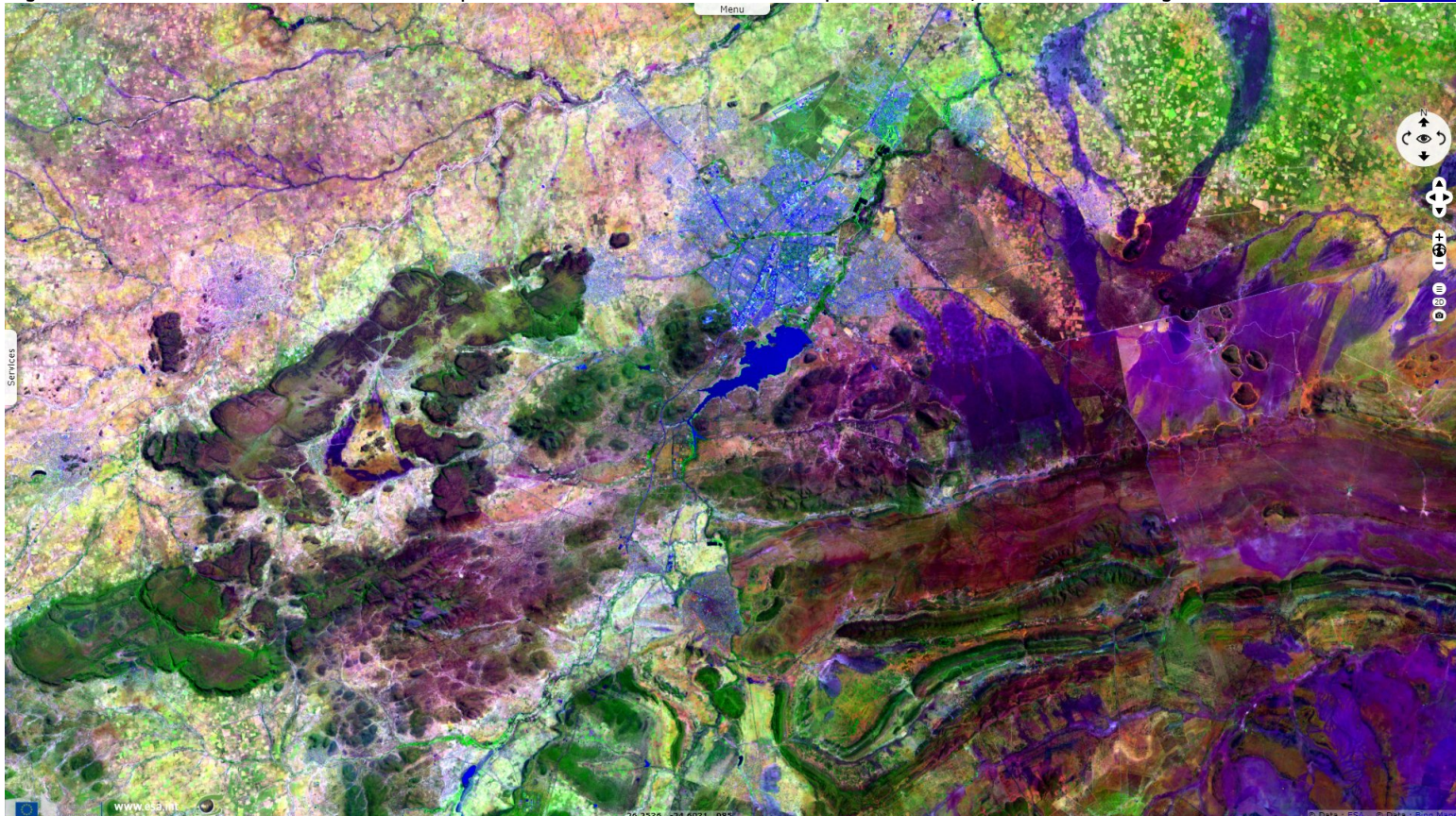


Fig. 2 - S2 (16.03.2019) - Planned to be the capital when Botswana became an independent nation, Gaborone's building started in 1963. [3D view](#)



The city originally planned on 20 000 citizens. By 2011, it counted over 230 000 inhabitants.



Fig. 3 - S1 (20,21,26.03.2019) - Its very fast, unplanned growth has created problems with housing & illegal settlements.

[2D view](#)



Fig. 4 - S2 (16.03.2019) - Original city planners have sometimes been pointed as the cause of Gaborone's development problems.

[2D view](#)



*The views expressed herein in no way be taken to reflect the official opinion of the European Space Agency or the European Union.  
Contains modified Copernicus Sentinel data 2021, processed by VisioTerra.*

More on European Commission space:						
More on ESA:				<a href="#">S-1 website</a>	<a href="#">S-2 website</a>	<a href="#">S-3 website</a>
More on Copernicus program:				<a href="#">SciHub portal</a>	<a href="#">Cophub portal</a>	<a href="#">Inthub portal</a>
More on VisioTerra:				<a href="#">Sentinel Vision Portal</a>	<a href="#">Envisat+ERS portal</a>	<a href="#">Swarm+GOCE portal</a>
					<a href="#">CryoSat portal</a>	