

# Yangon, Naypyidaw, past & present capitals of Burma

Sentinel-1 CSAR IW acquired on 23 January 2021 from 11:46:23 to 11:47:13 UTC  
Sentinel-1 CSAR IW acquired on 27 January 2021 from 23:24:20 to 23:25:10 UTC  
Sentinel-2 MSI acquired on 01 February 2021 at 04:00:01 UTC  
Sentinel-1 CSAR IW acquired on 01 February 2021 from 23:32:29 to 23:33:19 UTC

Author(s): Sentinel Vision team, VisioTerra, France - [svp@visioterra.fr](mailto:svp@visioterra.fr)

Keyword(s): Urban planning, capital city, Myanmar, Burma



[2D Layerstack](#)

Fig. 1 - S1 [23 & 27.01.2021] - Yangon, also known as Rangoon, borders the river Hlaing, near the Andaman Sea.

[2D view](#)

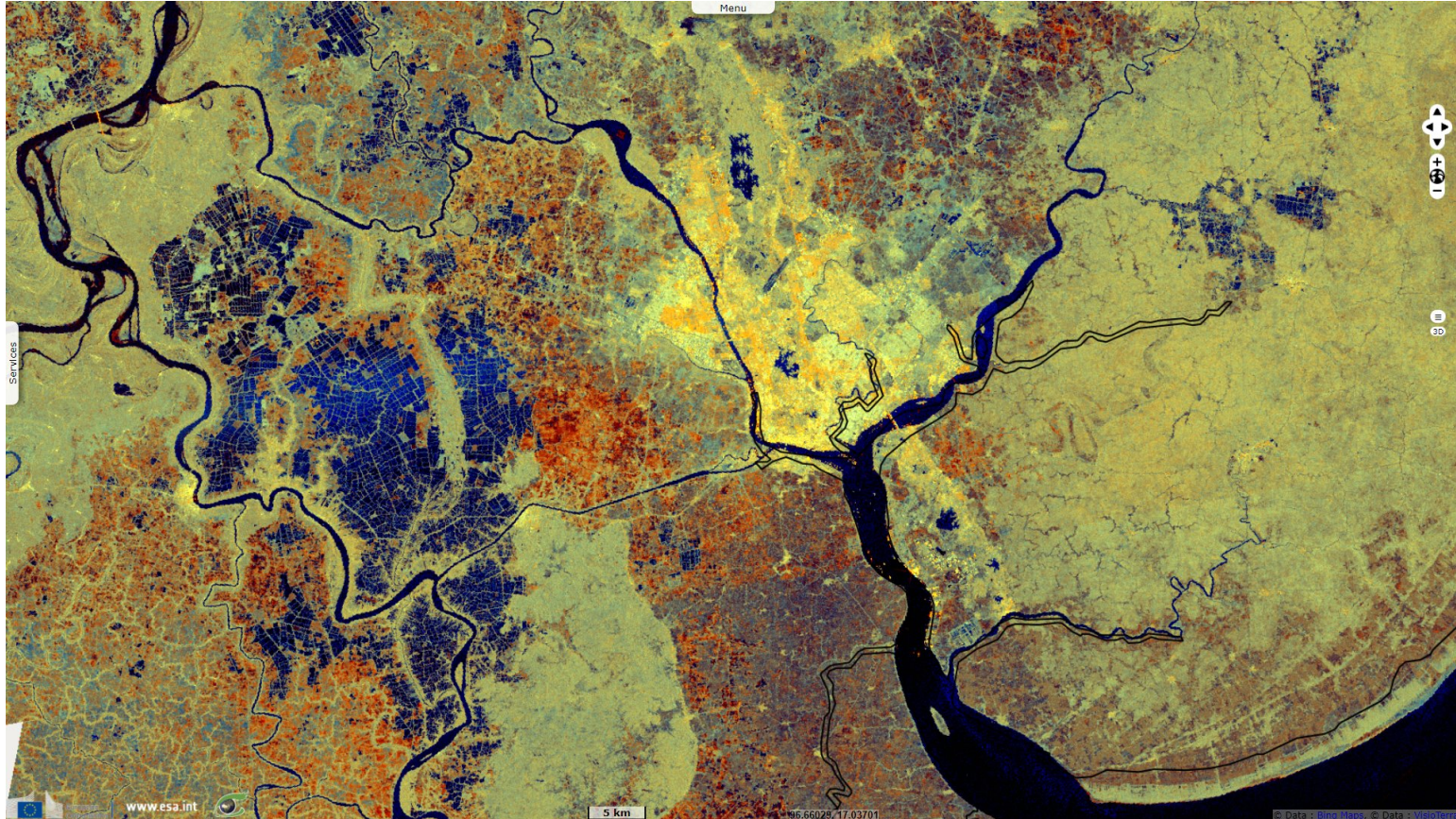


Fig. 2 - S2 [01.02.2021] - With over 7 million people, Yangon is Myanmar's most populous city, it served as its capital until 2006.

[2D view](#)





Fig. 3 - S1 (23.01.2021) - The location of Naypyidaw is more central than Yangon, it is also less vulnerable to hurricanes.

[2D view](#)

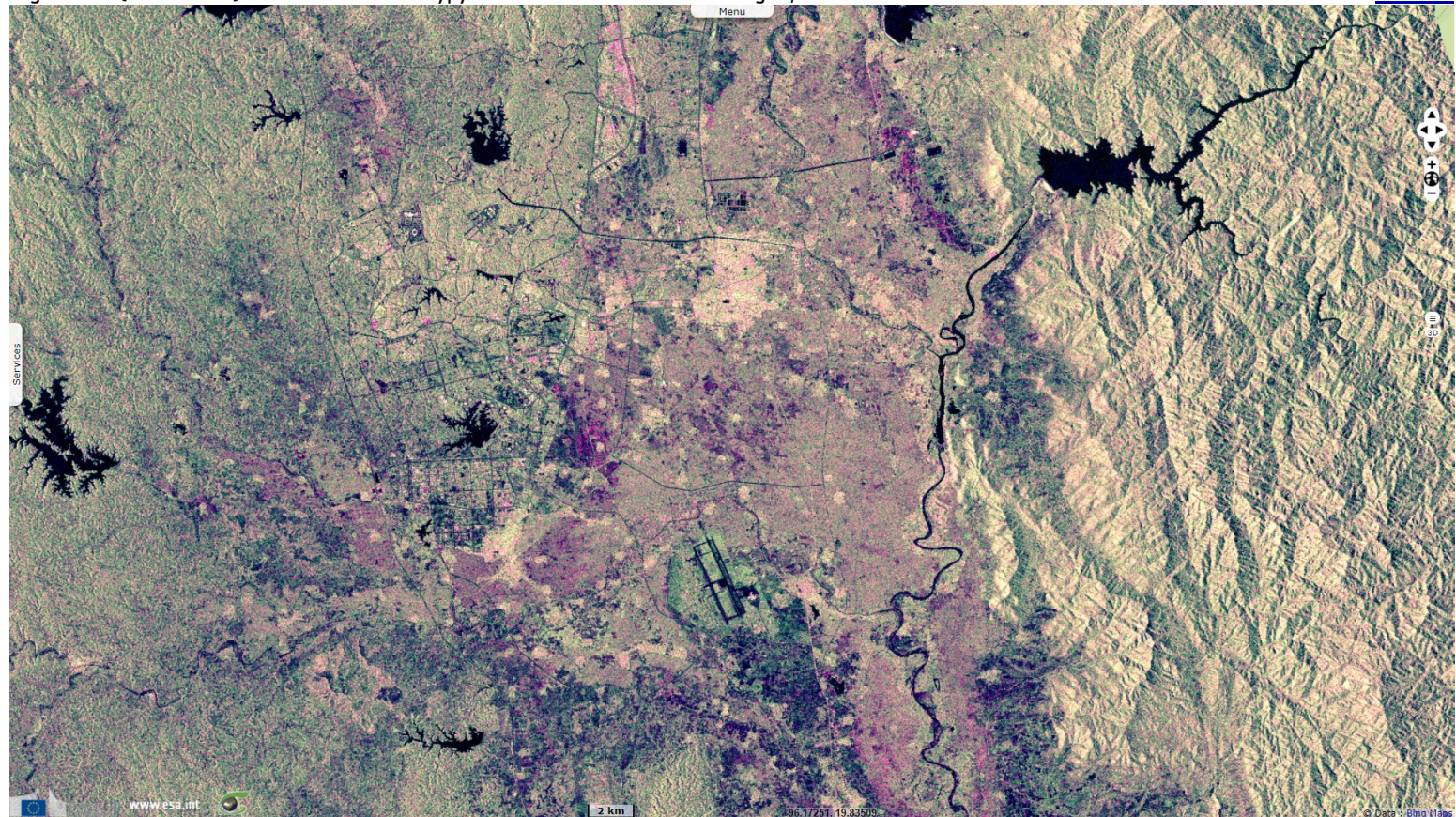


Fig. 4 - S2 (01.02.2021) - Its construction started in 2002 and was completed by 2012. It counts 930 000 inhabitants, its district 1 200 000.

[2D view](#)



*The views expressed herein can in no way be taken to reflect the official opinion of the European Space Agency or the European Union.  
Contains modified Copernicus Sentinel data 2021, processed by VisioTerra.*

More on European Commission space:						
More on ESA:				<a href="#">S-1 website</a>	<a href="#">S-2 website</a>	<a href="#">S-3 website</a>
More on Copernicus program:				<a href="#">SciHub portal</a>	<a href="#">Cophub portal</a>	<a href="#">Inthub portal</a>
More on VisioTerra:				<a href="#">Sentinel Vision Portal</a>	<a href="#">Envisat+ERS portal</a>	<a href="#">Swarm+GOCE portal</a>
					<a href="#">CryoSat portal</a>	