

Indonesia moves its capital from Jakarta to Borneo

Landsat TM acquired on **19 July 1988** at 02:30:34 UTC
Sentinel-2 MSI acquired on **12 September 2019** at 02:55:41 UTC
Sentinel-2 MSI acquired on **26 July 2021** at 02:16:09 UTC
Sentinel-1 CSAR IW acquired on **28 November 2021** at 11:15:29 UTC
Sentinel-1 CSAR IW acquired on **05 December 2021** at 21:51:20 UTC

Author(s): Sentinel Vision team, VisioTerra, France - svp@visioterra.fr

Keyword(s): Archipelago, island, subsidence, urban growth, coastal, rainforest, deforestation, biodiversity, Indonesia

[2D Layerstack](#)

Fig. 1 - Landsat-5 (23.06.1988) - View of Jakarta in 1988 while it counted 8 million inhabitants. It is located in Java island, Indonesia.

[2D view](#)



Fig. 2 - S2 (12.09.2019) - 30 years later, the city has spread as its inner population rose to 10.5 millions, three times more with its suburb.

[2D view](#)



Fig. 3 - S1 (23.10.2021-28.11.2021) - It faces rapid urban growth, ecological breakdown, gridlocked traffic, congestion, flooding & seismic hazard. [2D view](#)

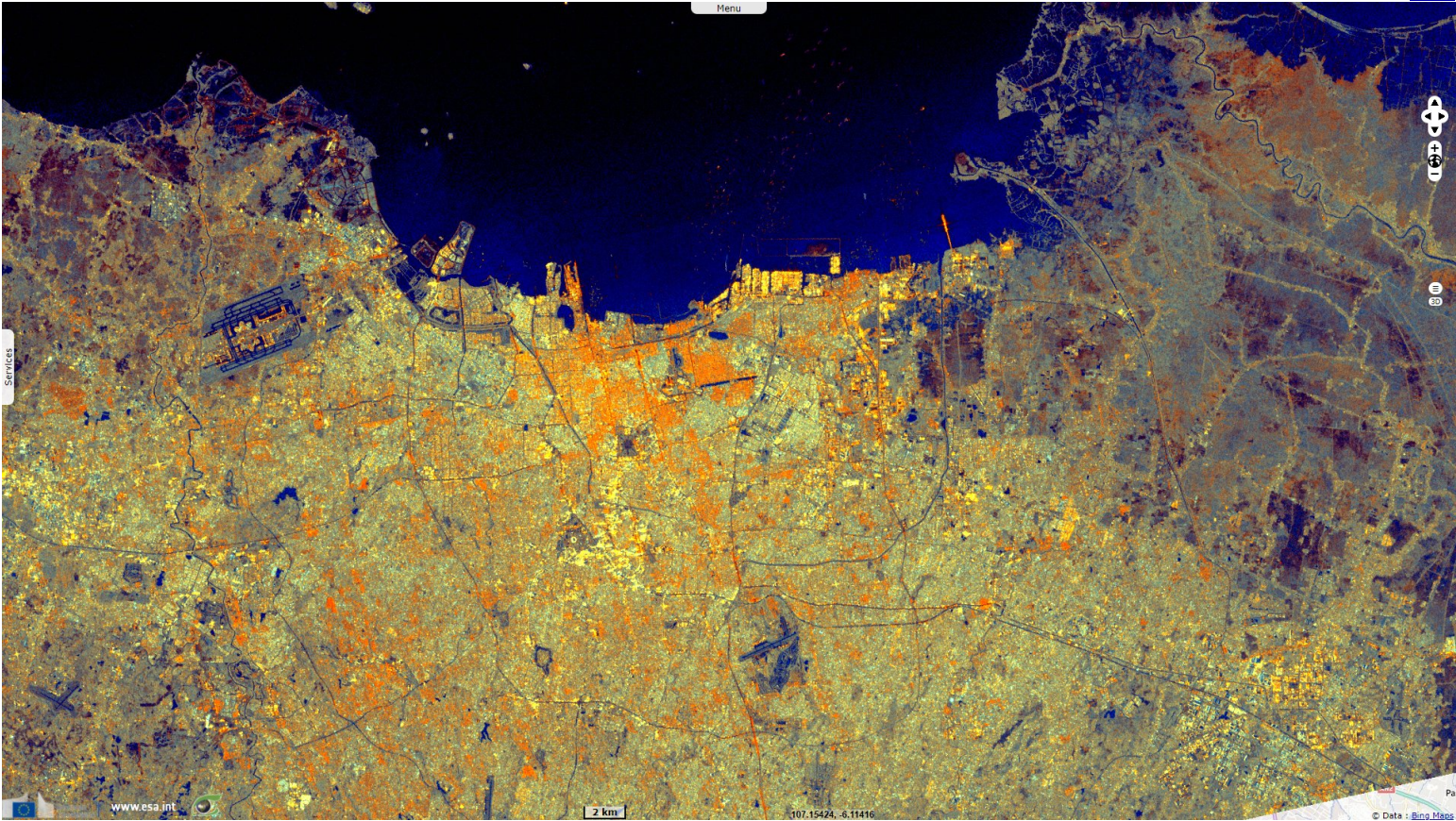


Fig. 4 - S2 (26.07.2021) - The city is sinking 10 cm/year, up to 25 cm in some parts. Coupled with sea level rise, it's become more prone to flooding. [2D view](#)



Fig. 5 - S2 (26.07.2021) - Because of these challenges, the capital of Indonesia would be moved to the province of East Kalimantan.

[3D view](#)

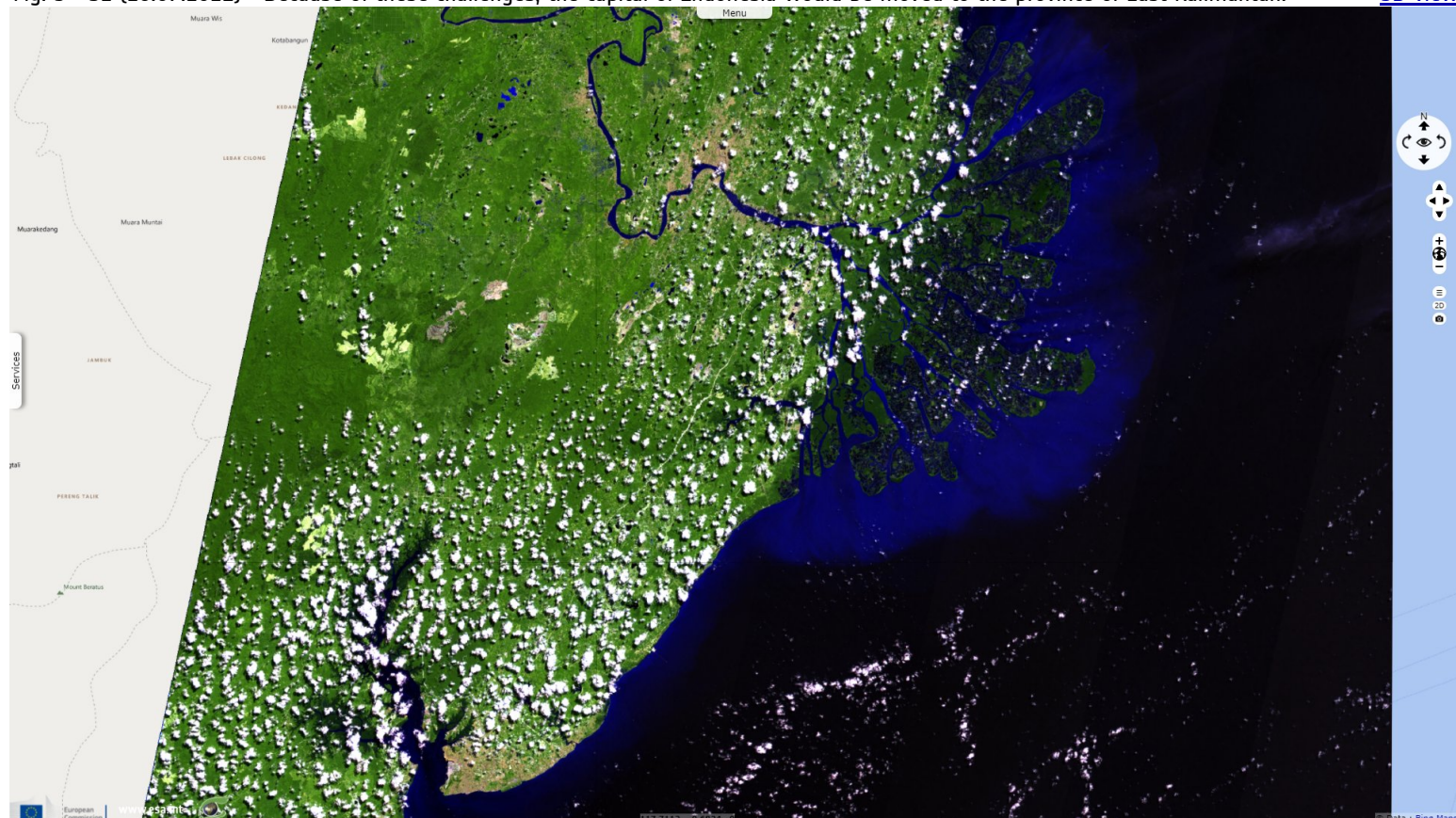
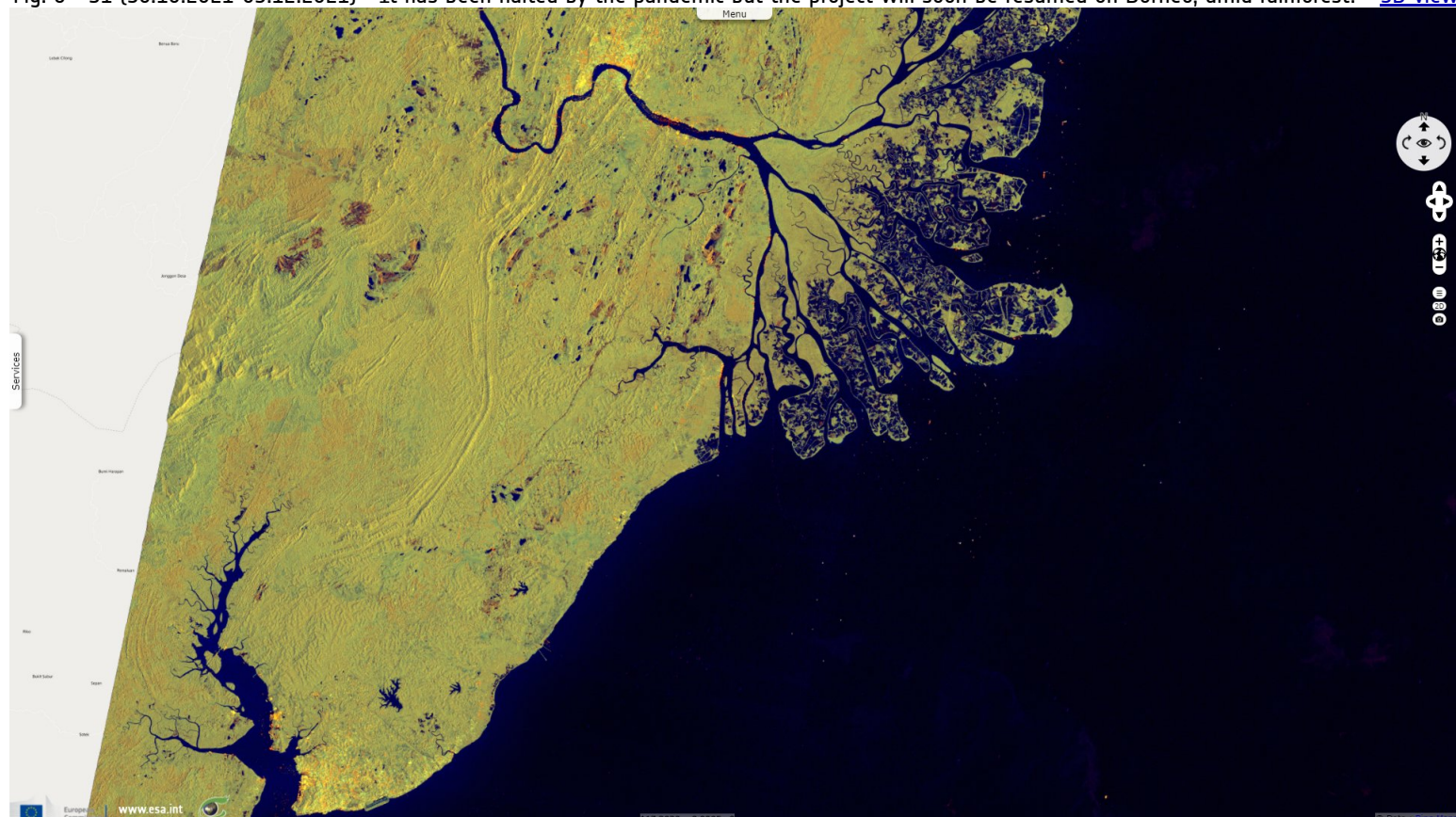


Fig. 6 - S1 (30.10.2021-05.12.2021) - It has been halted by the pandemic but the project will soon be resumed on Borneo, amid rainforest.

[3D view](#)



*The views expressed herein can in no way be taken to reflect the official opinion of the European Space Agency or the European Union.
Contains modified Copernicus Sentinel data 2021, processed by VisioTerra.*

More on European Commission space:						
More on ESA:				S-1 website	S-2 website	S-3 website
More on Copernicus program:				SciHub portal	Cophub portal	Inthub portal
More on VisioTerra:				Sentinel Vision Portal	Envisat+ERS portal	Swarm+GOCE portal
					CryoSat portal	