

Brand new but derelict theme park, Ankara, Turkey

Sentinel-1 CSAR IW acquired on 5, 11, 17, 23 October 2014

Sentinel-1 CSAR IW acquired on 13, 18, 19 March 2019

Sentinel-2 MSI acquired on 25 August 2019 at 08:36:01 UTC

Sentinel-2 MSI acquired on 29 August 2021 at 08:35:59 UTC

Author(s): Sentinel Vision team, VisioTerra, France - svp@visioterra.fr

Keyword(s): Urban planning, infrastructures, Turkey



[2D Layerstack](#)

Fig. 1 - S1 (Oct. 2014) - The site of the park during its construction. It used to be a zoo open to the public within the Ataturk Forest Farm. [2D view](#)

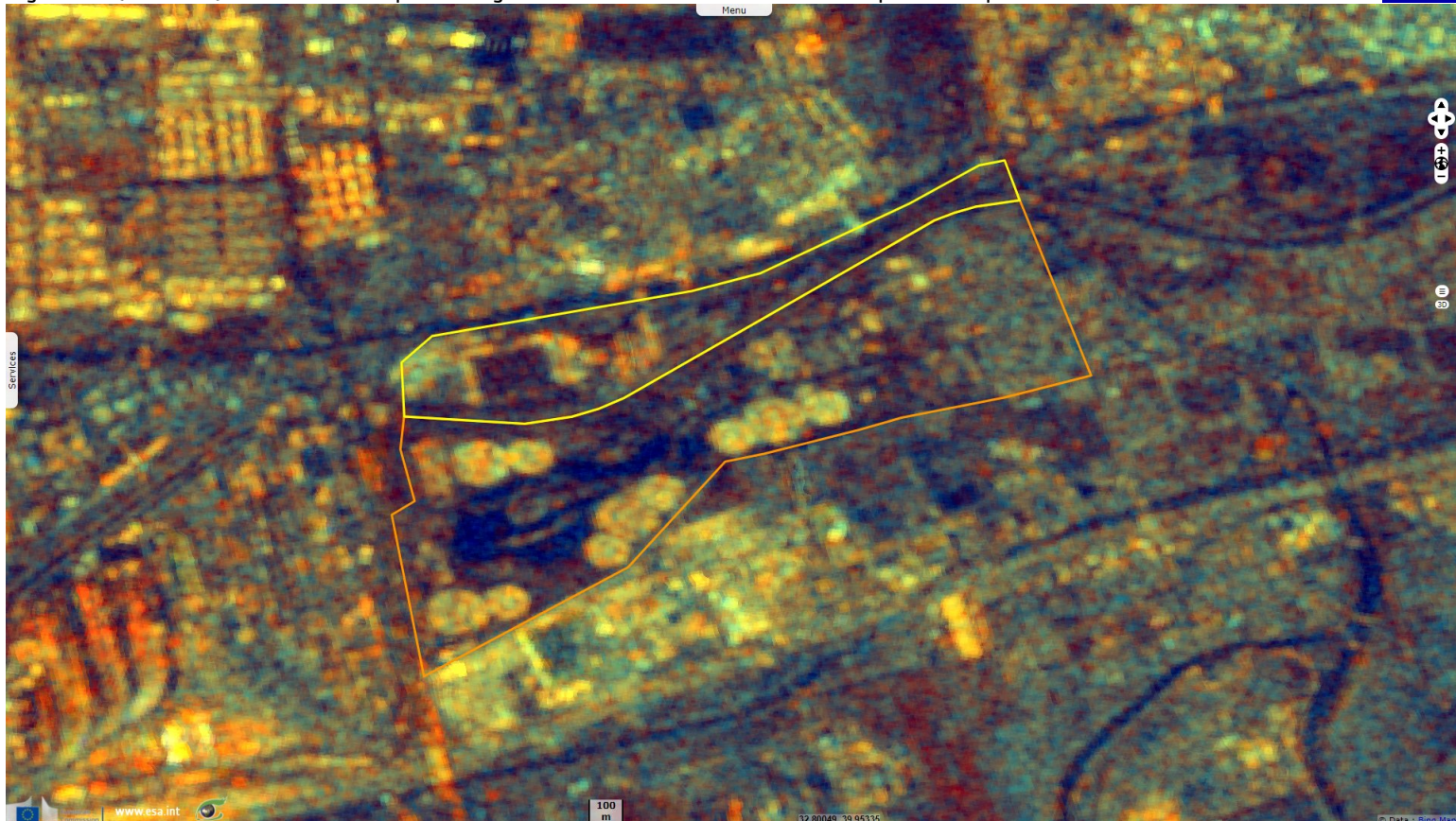


Fig. 2 - S1 (March 2019) - View soon after it had opened. Multiple conic marquees show. It was then the World's 2nd largest theme park. [2D view](#)

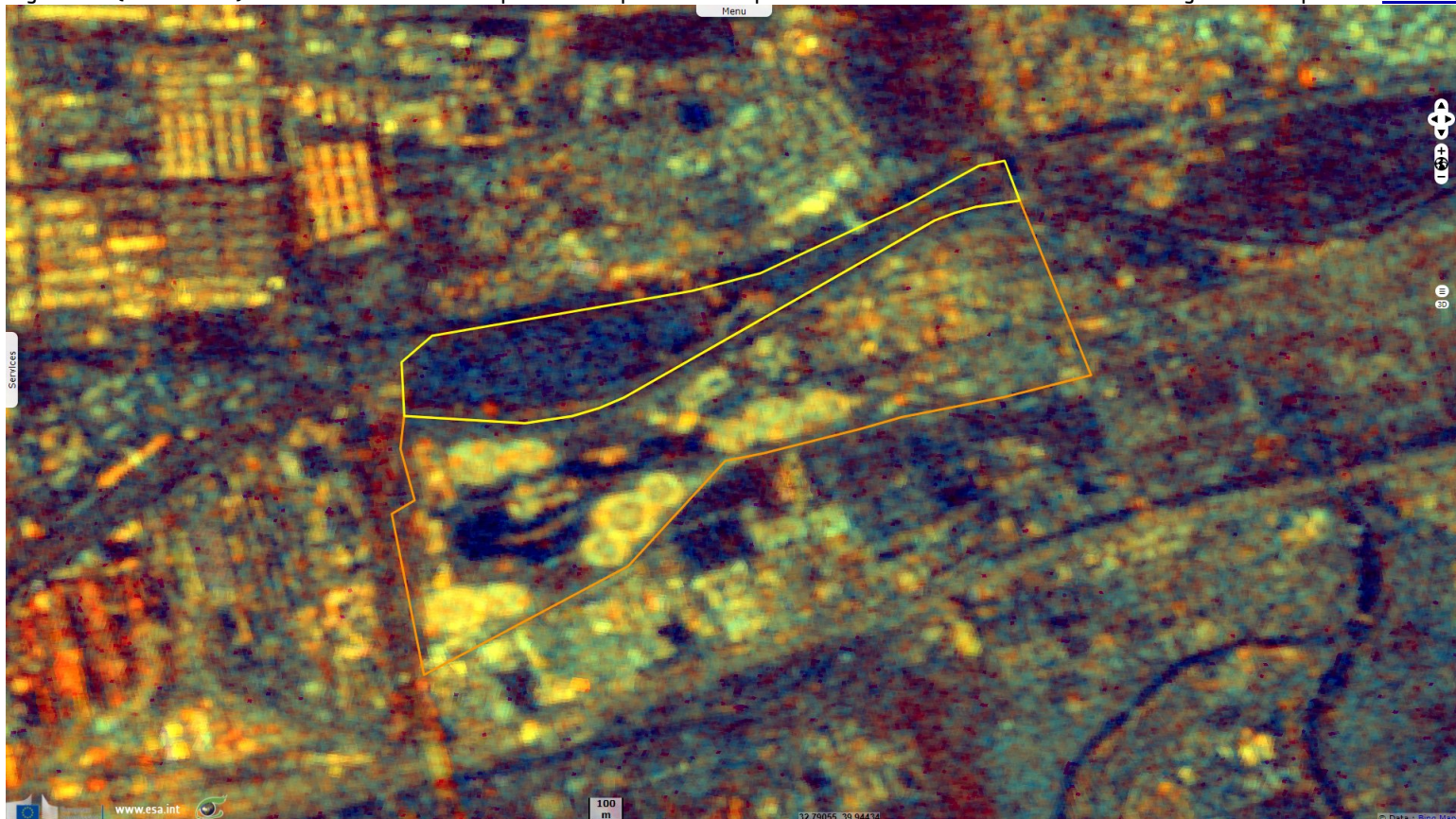


Fig. 3 - S2 (25.08.2019) - Lacking visitors, it closed in February 2020, never fully completed. It remains derelict since.

[2D view](#)



Fig. 4 - S2 (29.08.2021) - Its basins and vegetation are no longer maintained, its broken toys and ride parts are laying at a waste site.

[2D view](#)



*The views expressed herein can in no way be taken to reflect the official opinion of the European Space Agency or the European Union.
Contains modified Copernicus Sentinel data 2021, processed by VisioTerra.*

More on European Commission space:						
More on ESA:				S-1 website	S-2 website	S-3 website
More on Copernicus program:				SciHub portal	Cophub portal	Inthub portal
More on VisioTerra:				Sentinel Vision Portal	Envisat+ERS portal	Swarm+GOCE portal
					CryoSat portal	