

# Construction of the Grand Ethiopian Renaissance Dam

Sentinel-1 CSAR IW acquired on 13 January 2015 at 03:24:41 UTC

Sentinel-2 MSI acquired on 12 November 2015 at 08:01:42 UTC

Sentinel-2 MSI acquired on 11 March 2018 at 07:57:31 UTC

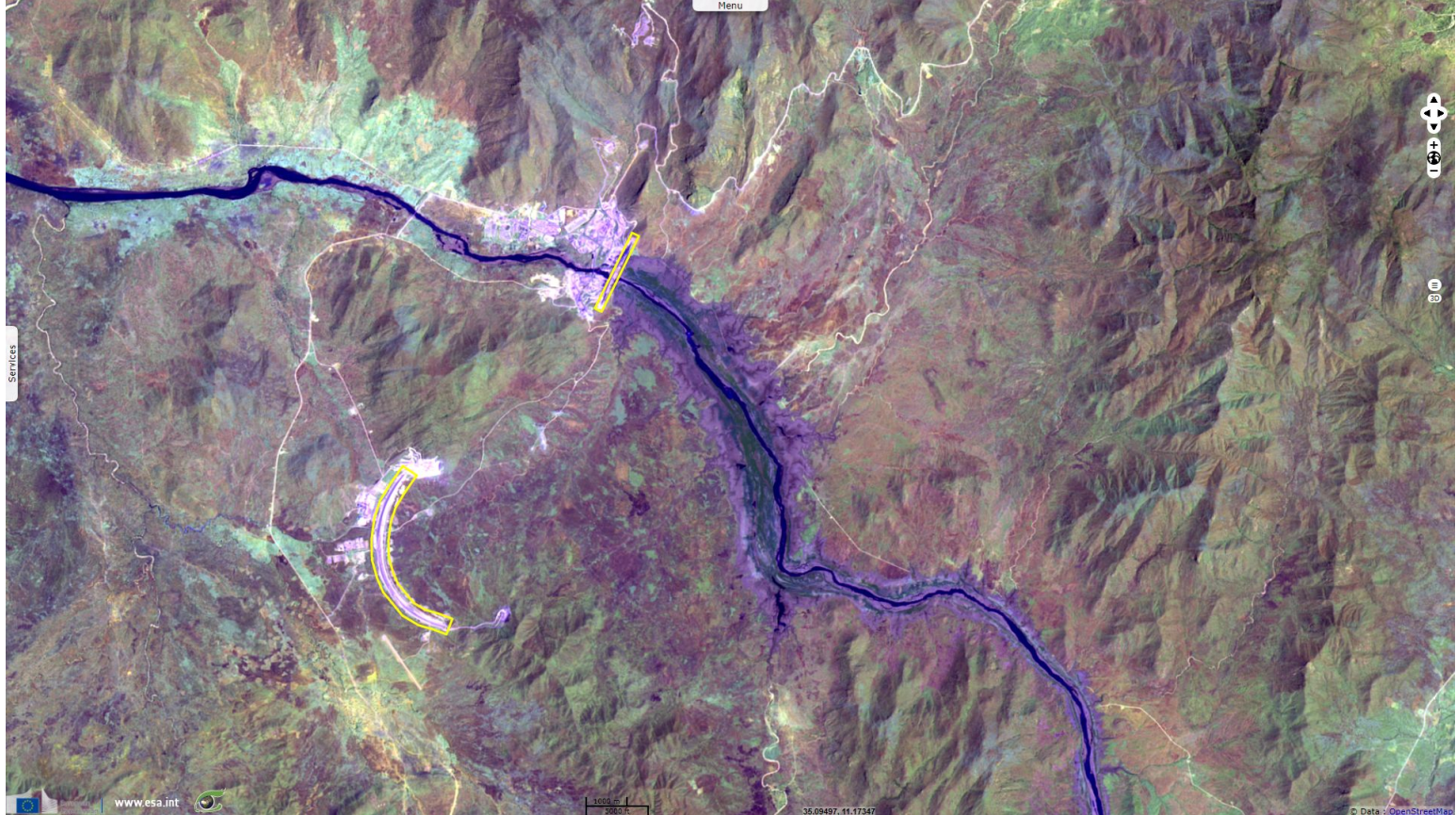
Sentinel-1 CSAR IW acquired on 03 April 2018 at 03:24:59 UTC

Author(s): Sentinel Vision team, VisioTerra, France - [svp@visioterra.fr](mailto:svp@visioterra.fr)

Keyword(s): Land, river, dam, reservoir, renewable energy, hydroelectricity, land cover, Blue Nile, Ethiopia



Fig. 1 - S2 (11.03.2018) - 12,11,2 colour composite - The Blue Nile & the two dams of the Grand Ethiopian Renaissance Dam [2D animation](#) [2D view](#)



The 6450MW dam will be the largest African hydropower plant (7th in the world). It is contested by Egypt regarding the sharing of Nile's water.

Fig. 2 - S1 (03.04.2018) - vv,vh,ndi(vh,vv) colour composite - The 2 dams will retain the water in the brownish area & beyond. [2D animation](#) [2D view](#)

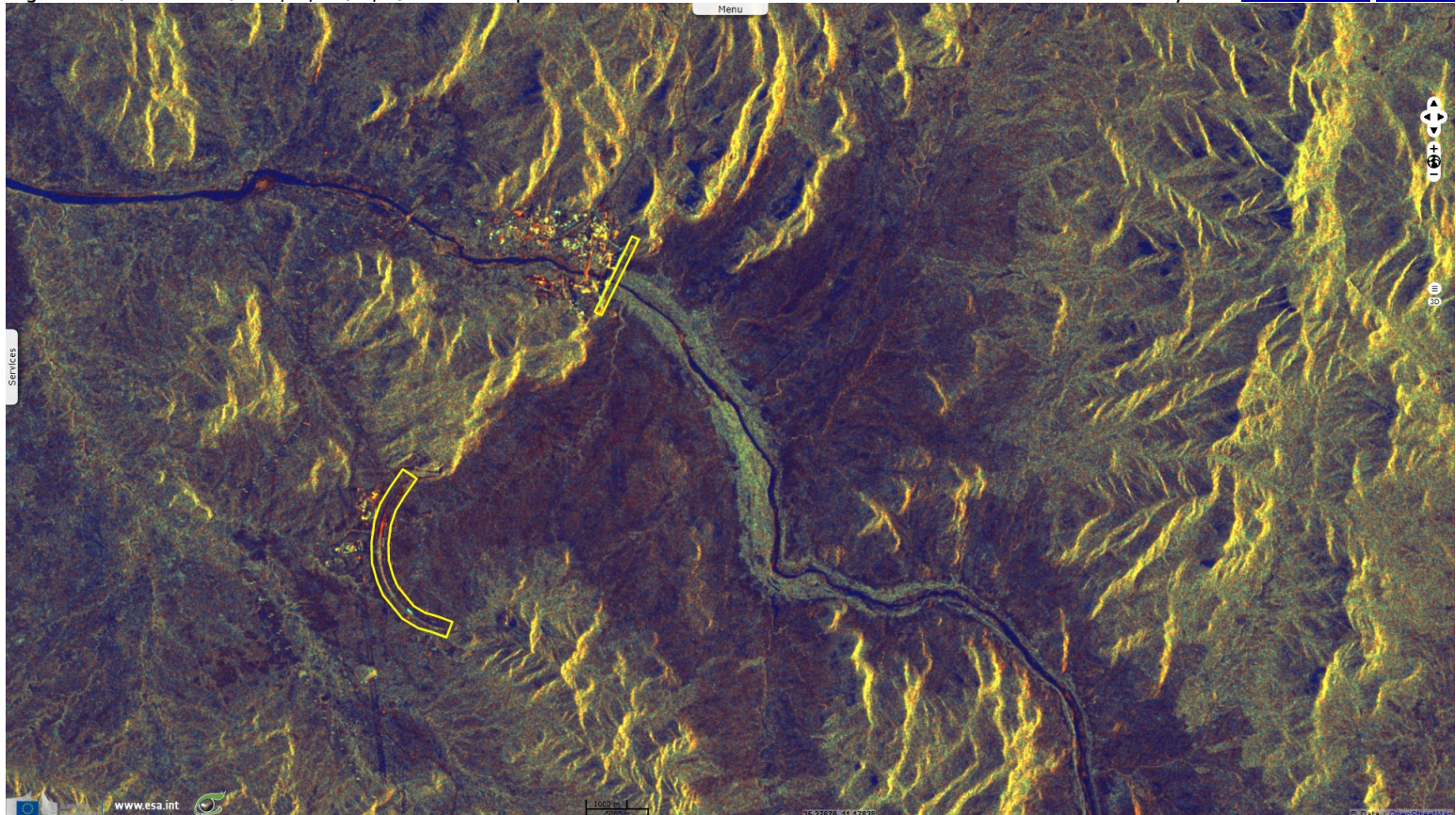


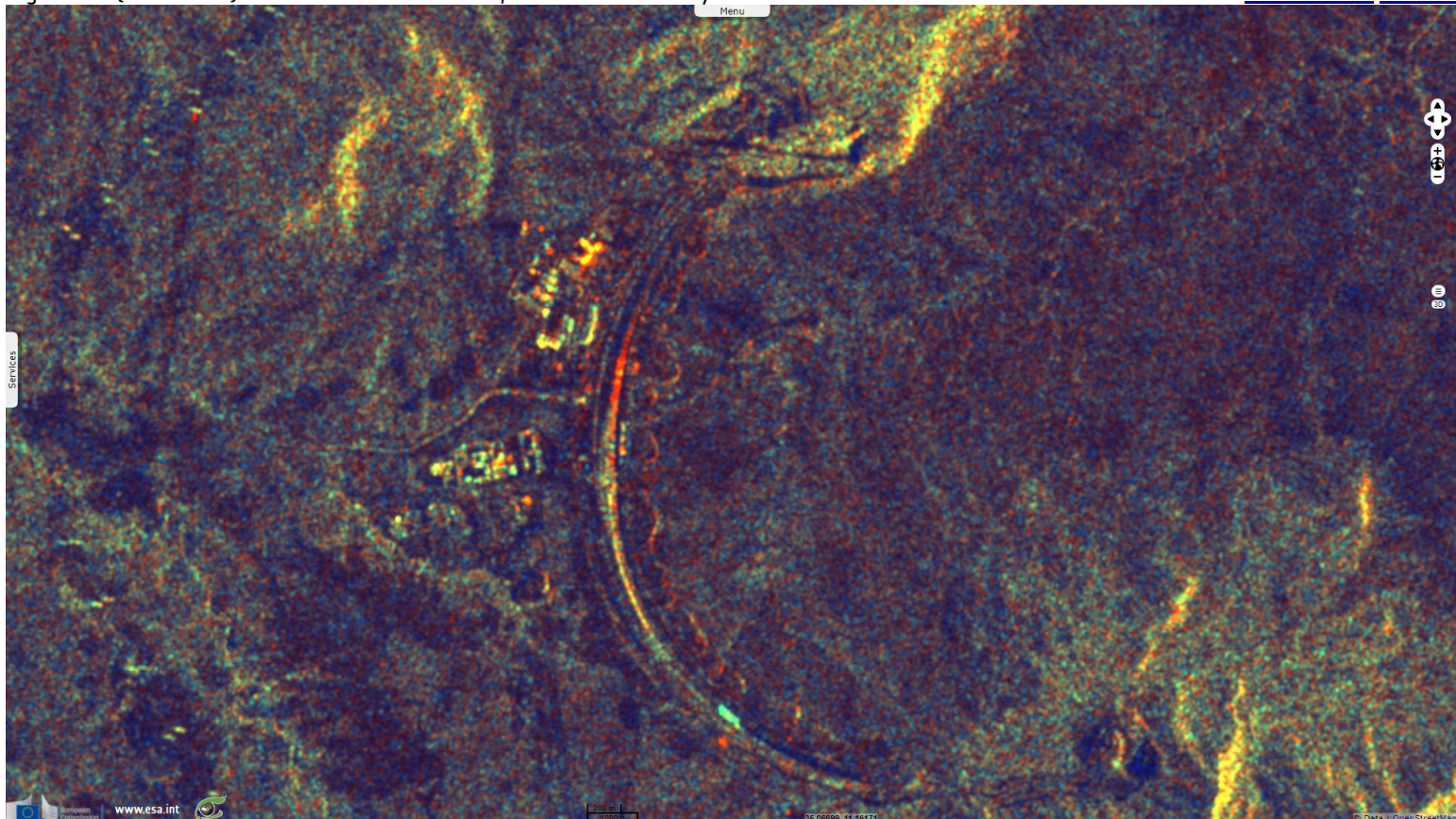
Fig. 3 - S2 (11.03.2018) - 11,8,2 colour composite - Zoom on the main dam, under construction since 2011.

[2D animation](#) [2D view](#)



Fig. 4 - S1 (03.04.2018) - Zoom on the saddle dam, located 3.5 km away from the border with Sudan.

[2D animation](#) [2D view](#)



*The views expressed herein can in no way be taken to reflect the official opinion of the European Space Agency or the European Union.*

More on European Commission space:								
More on ESA:				<a href="#">S-1 website</a>	<a href="#">S-2 website</a>	<a href="#">S-3 website</a>		
More on Copernicus program:				<a href="#">SciHub portal</a>	<a href="#">Cophub portal</a>	<a href="#">Inthub portal</a>	<a href="#">Colhub portal</a>	
More on VisioTerra:				<a href="#">Sentinel Vision Portal</a>	<a href="#">Envisat+ERS portal</a>	<a href="#">Swarm+GOCE portal</a>	<a href="#">CryoSat portal</a>	Proba-V portal