

Typhoon Vamco passes over metro Manila, Philippines

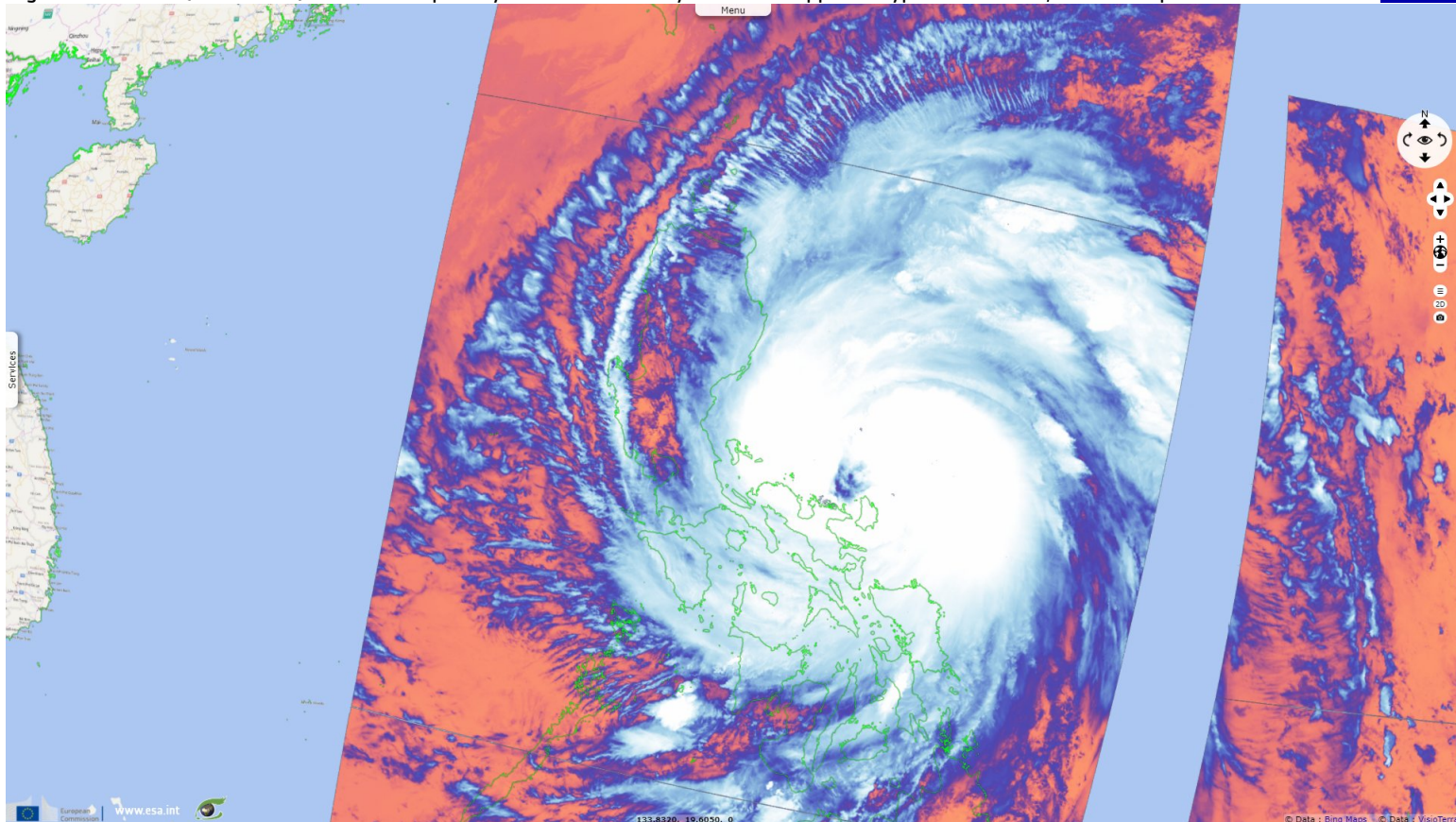
Sentinel-1 CSAR IW acquired on 25 October 2020 from 10:05:59 to 10:06:49 UTC
Sentinel-3 SLSTR RBT acquired on 11 November 2020 from 00:46:06 to 01:50:42 UTC
Sentinel-3 SLSTR RBT acquired on 12 November 2020 from 01:57:54 to 02:00:54 UTC
Sentinel-1 CSAR IW acquired on 18 November 2020 from 10:05:59 to 10:06:49 UTC

Author(s): Sentinel Vision team, VisioTerra, France - svp@visioterra.fr

Keyword(s): Natural disaster, cyclone, emergency, global warming, climate change, precipitations, flood, Philippines

[2D Layerstack](#)

Fig. 1 - S3 SLSTR (11.11.2020) - 3 other tropical cyclones had recently hit the Philippines: Typhoons Molave, Goni & Tropical Storm Etou. [2D view](#)



Vamco made its first landfall in the Philippines near midnight in the Quezon province as a Category 2-equivalent typhoon.

Fig. 2 - S3 SLSTR (12.11.2020) - The typhoon brought heavy rains in Central Luzon and the nearby provinces, including Metro Manila. [2D view](#)

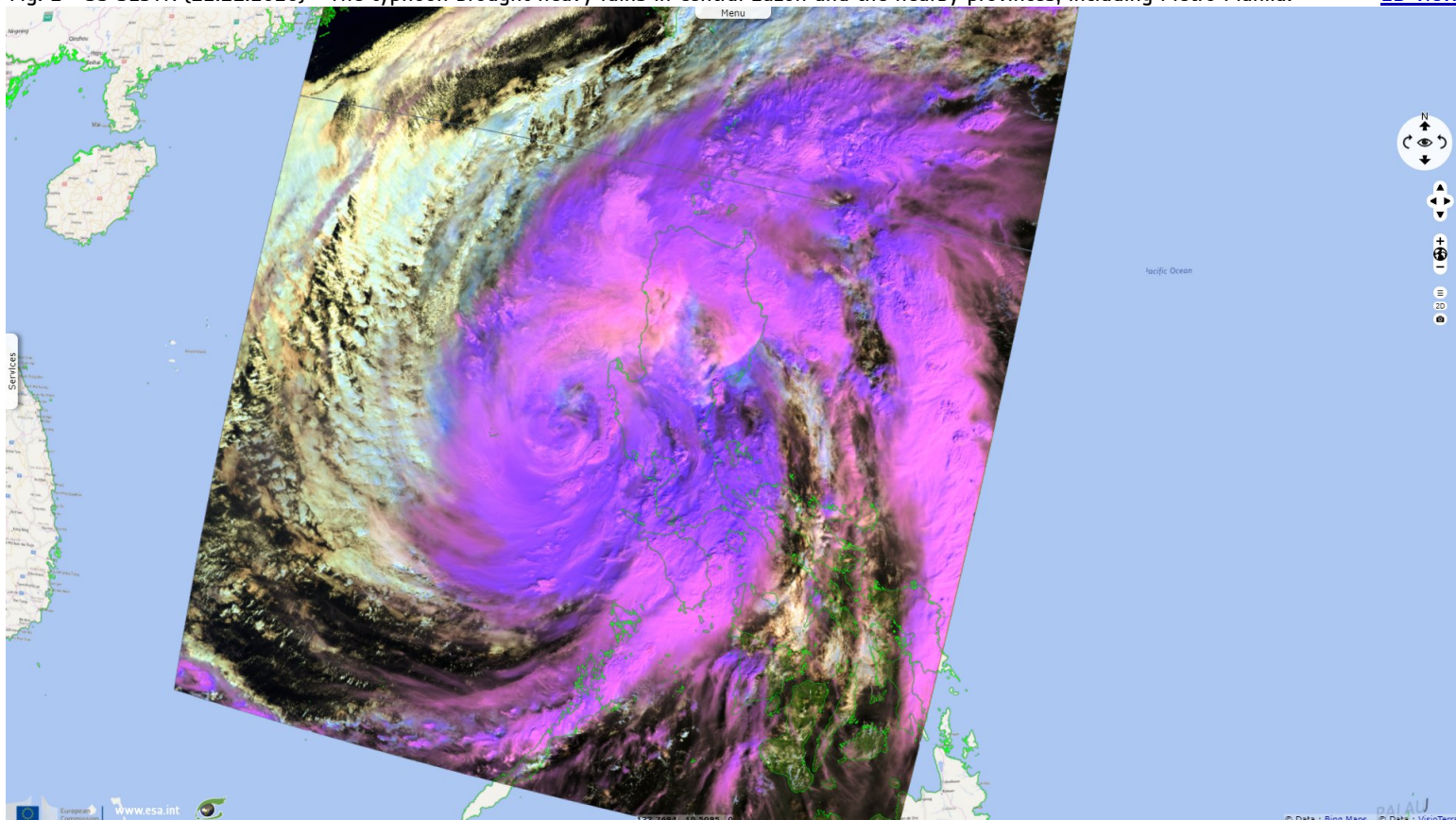


Fig. 3 - S1 (25.10.2020) - Heavy rains overflowed rivers, dams from all around Luzon have been forced to release large amounts of water. [2D view](#)

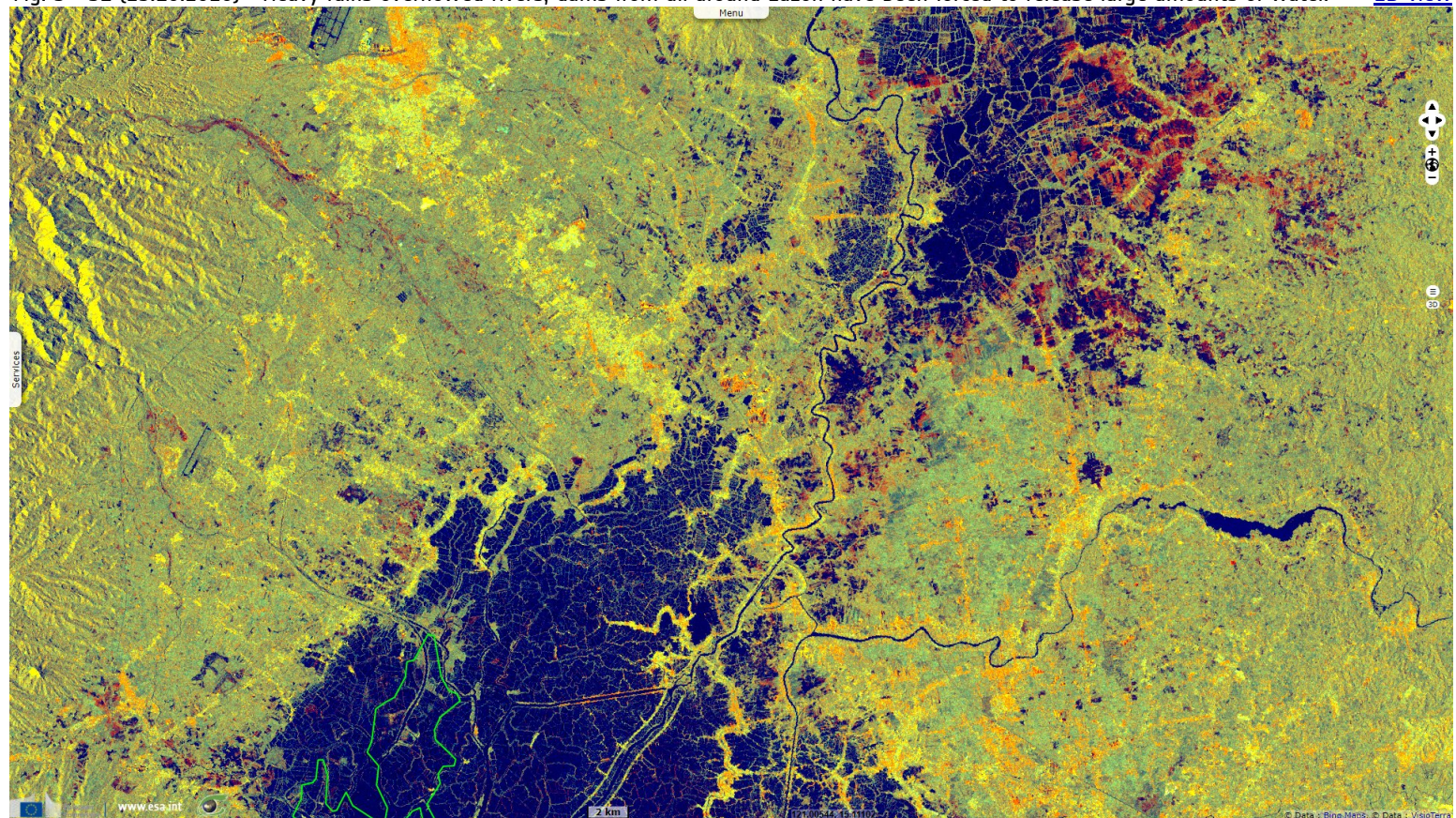
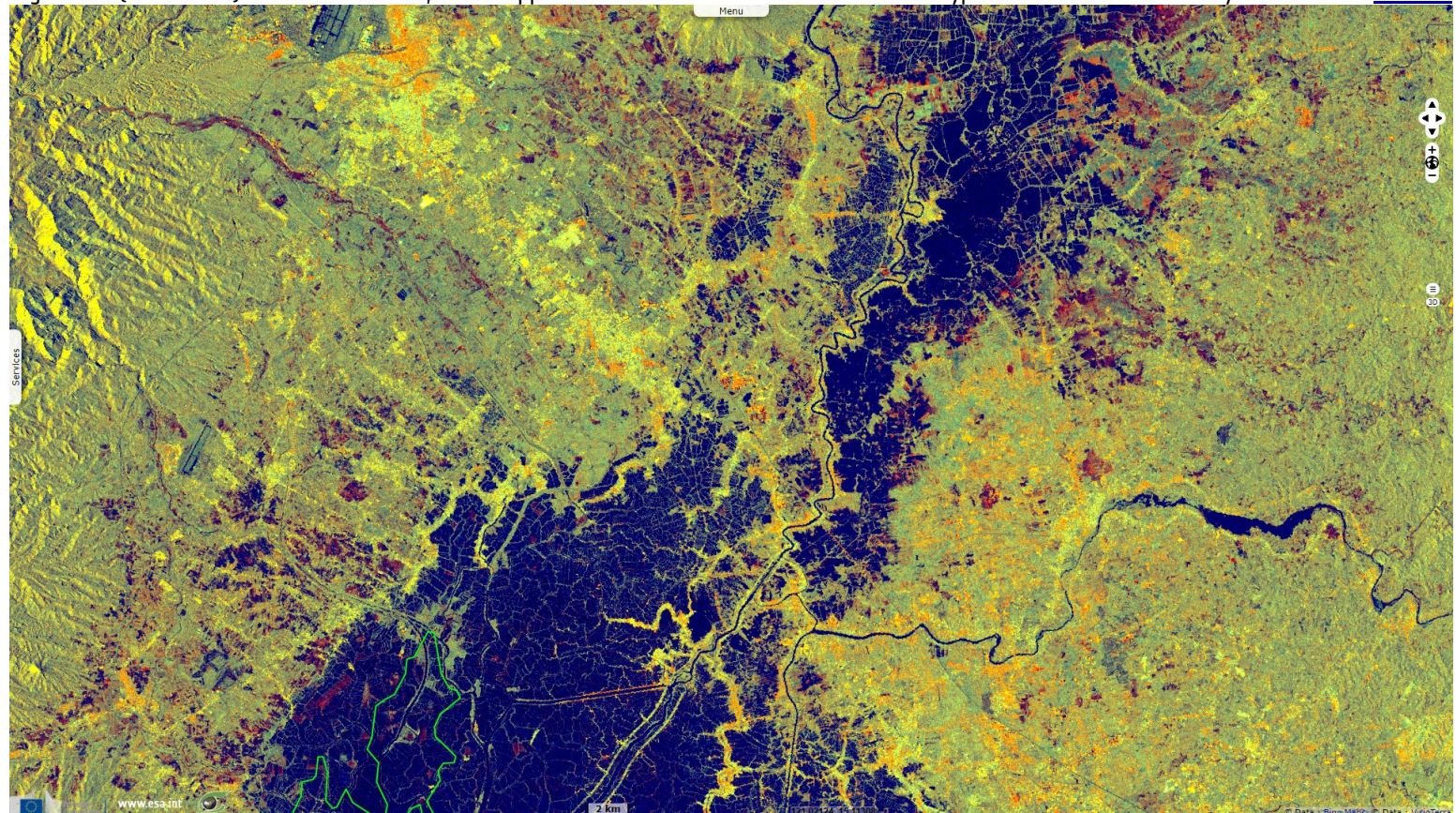


Fig. 4 - S1 (18.11.2020) - As of 20.11.2020, the Philippines' Disaster Council had stated that the typhoon's casualties is already at 98. [2D view](#)



*The views expressed herein can in no way be taken to reflect the official opinion of the European Space Agency or the European Union.
Contains modified Copernicus Sentinel data 2020, processed by VisioTerra.*

| | | | | | | |
|------------------------------------|--|--|--|--|------------------------------------|-----------------------------------|
| More on European Commission space: | | | | | | |
| More on ESA: | | | | S-1 website | S-2 website | S-3 website |
| More on Copernicus program: | | | | SciHub portal | Cophub portal | Inthub portal |
| More on VisioTerra: | | | | Sentinel Vision Portal | Envisat+ERS portal | Swarm+GOCE portal |
| | | | | | CryoSat portal | |