

Great Whale River landslide, Quebec, Canada

Sentinel-2 MSI acquired on 12 April 2021 at 16:28:29 UTC
Sentinel-1 CSAR IW acquired on 21 April 2021 at 22:55:01 UTC
Sentinel-2 MSI acquired on 22 April 2021 at 16:28:29 UTC
Sentinel-1 CSAR IW acquired on 03 May 2021 at 22:55:01 UTC

Author(s): Sentinel Vision team, VisioTerra, France - svp@visioterra.fr

Keyword(s): Geohazard, landslide, river, hydrology, polar, ice, cryosphere, Quebec, Canada, Hudson Bay

[3D Layerstack](#)

Fig. 1 - S1 (21.04.2021) - On 22 April 2021, a very large landslide has happened Nunavik, Northern Quebec.

[3D view](#)

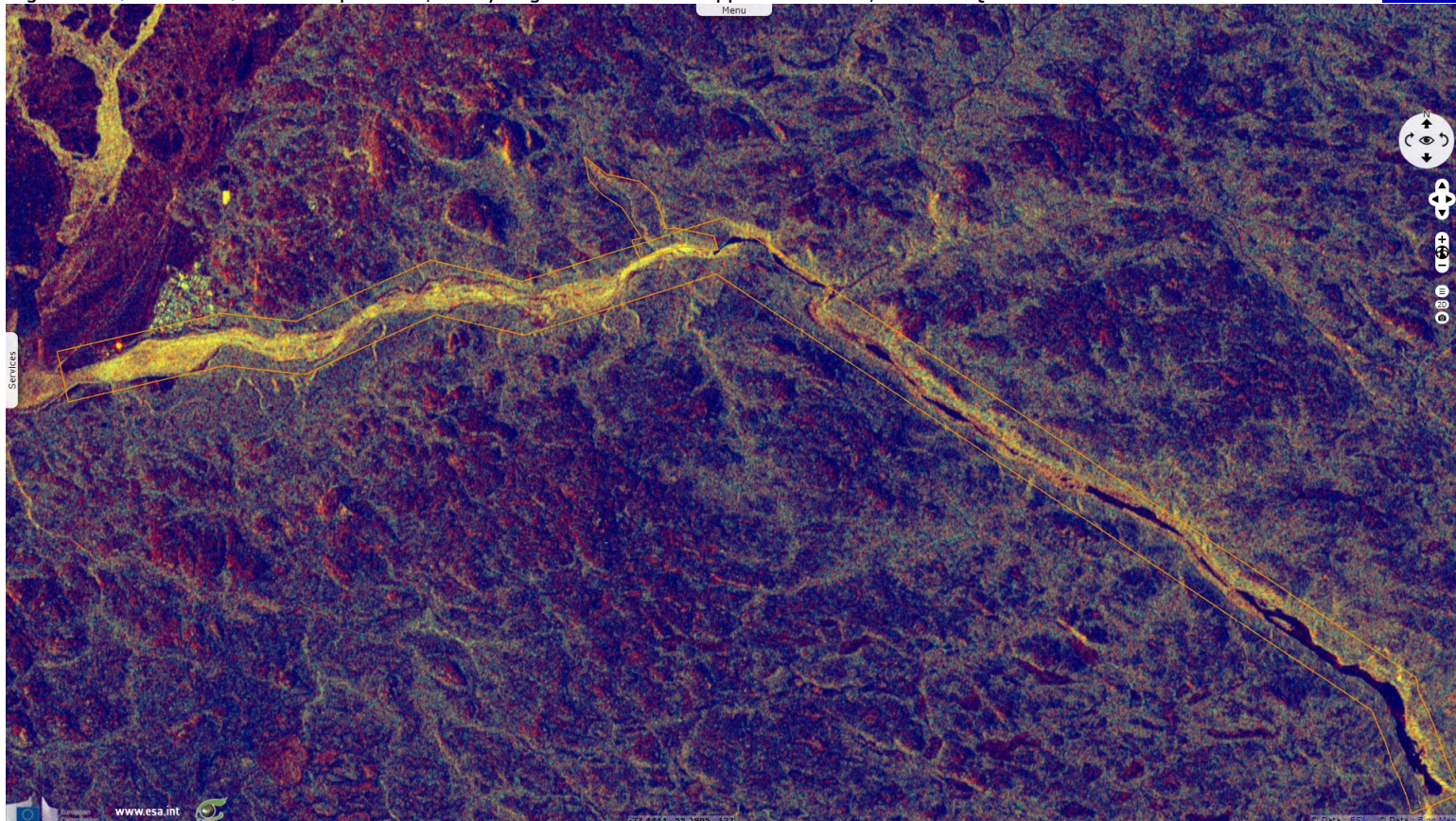


Fig. 2 - S1 (03.05.2021) - It occurred on the Great Whale River, upstream from the villages of Kuujuaapik & Whapmagoostui.

[3D view](#)

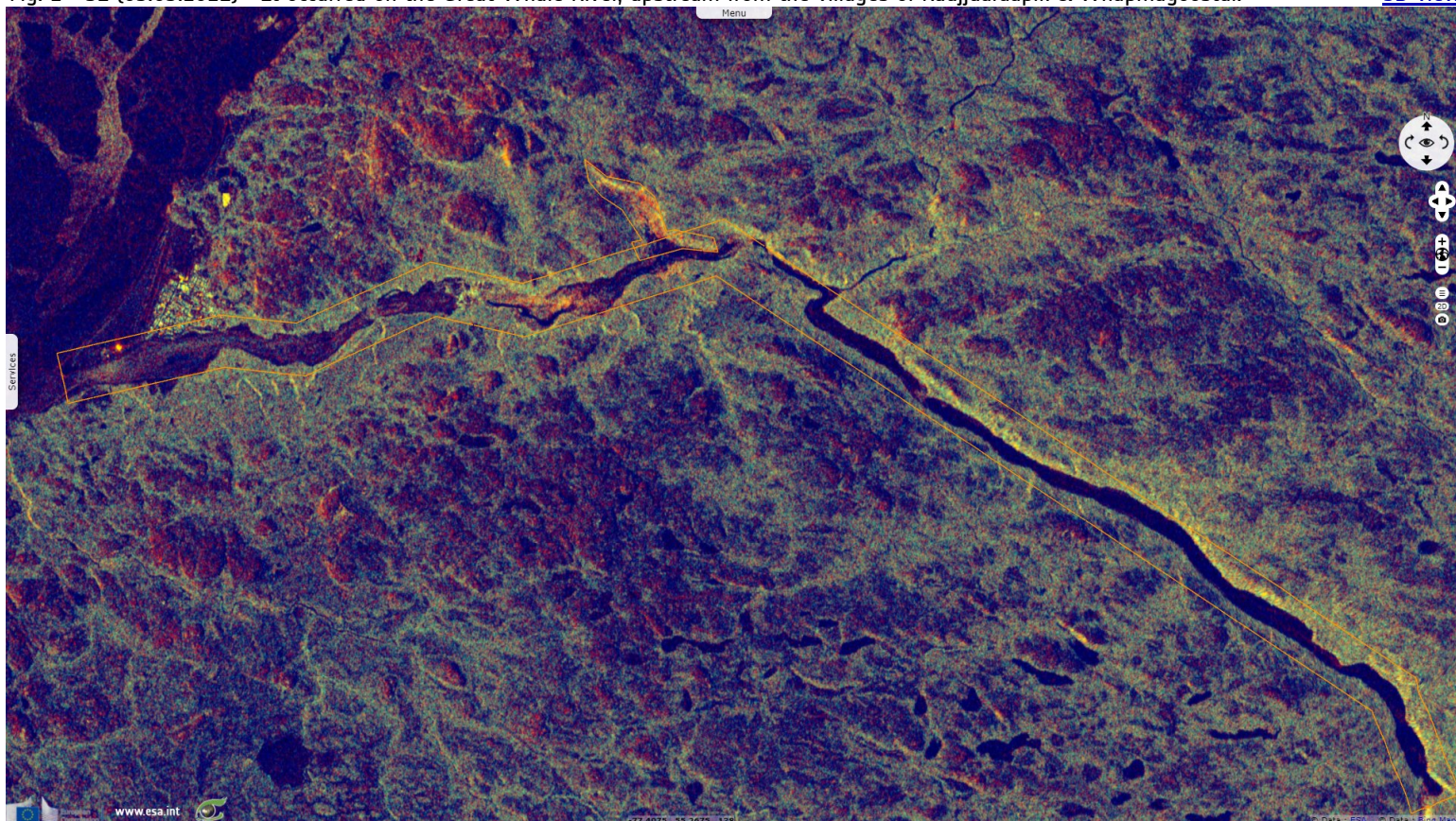


Fig. 3 - S2 (12.04.2021) - From the crown to the channel it is about 1.6 km, and from the crown to the toe it is about 4 km.

[3D view](#)

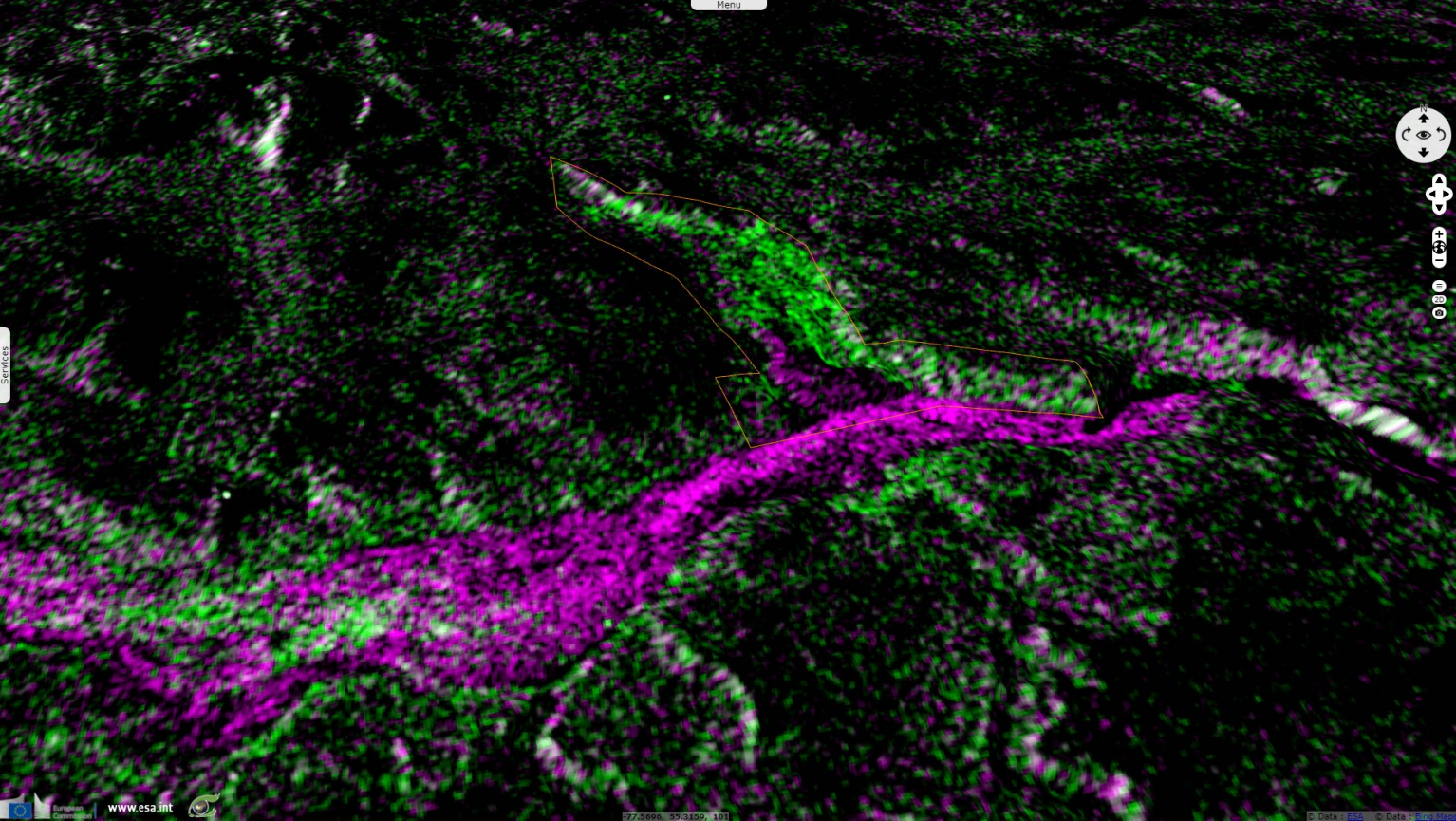


Fig. 4 - S2 (22.04.2021) - The volume of the landslide on the Great Whale River is likely to be in the millions of cubic metres.













[3D view](#)



Fig. 5 - S1 (24.04.2021; 03.05.2021) - View of the change in radar images, the origin of the landslide is in bright green.



*The views expressed herein can in no way be taken to reflect the official opinion of the European Space Agency or the European Union.
Contains modified Copernicus Sentinel data 2021, processed by VisioTerra.*

More on European Commission space:							
More on ESA:				S-1 website	S-2 website	S-3 website	
More on Copernicus program:				Scihub portal	Cophub portal	Inthub portal	Colhub portal
More on VisioTerra:				Sentinel Vision Portal	Envisat+ERS portal	Swarm+GOCE portal	CryoSat portal