

Floods in the north of Albania

Sentinel-2 MSI acquired on **27 November 2020** at 09:33:39 UTC
Sentinel-1 CSAR IW acquired on **06 January 2021** at 04:46:31 UTC
Sentinel-1 CSAR IW acquired on **06 January 2021** at 04:46:56 UTC
Sentinel-1 CSAR IW acquired on **12 January 2021** at 04:47:19 UTC

Author(s): Sentinel Vision team, VisioTerra, France - svp@visioterra.fr

Keyword(s): Emergency, flooding, river, hydrology, precipitations, Albania

[2D Layerstack](#)

Fig. 1 - S2 (27.11.2020) - The government in Albania reported on 10.01.2021 that flooding had affected wide areas in the north of the country after heavy rain that began on 06 January.

[2D view](#)



Fig. 2 - S1 (06.01.2021) - Around 2,850 ha of land was under water due to flooding from the Drin River in Lezhë County.

[2D view](#)

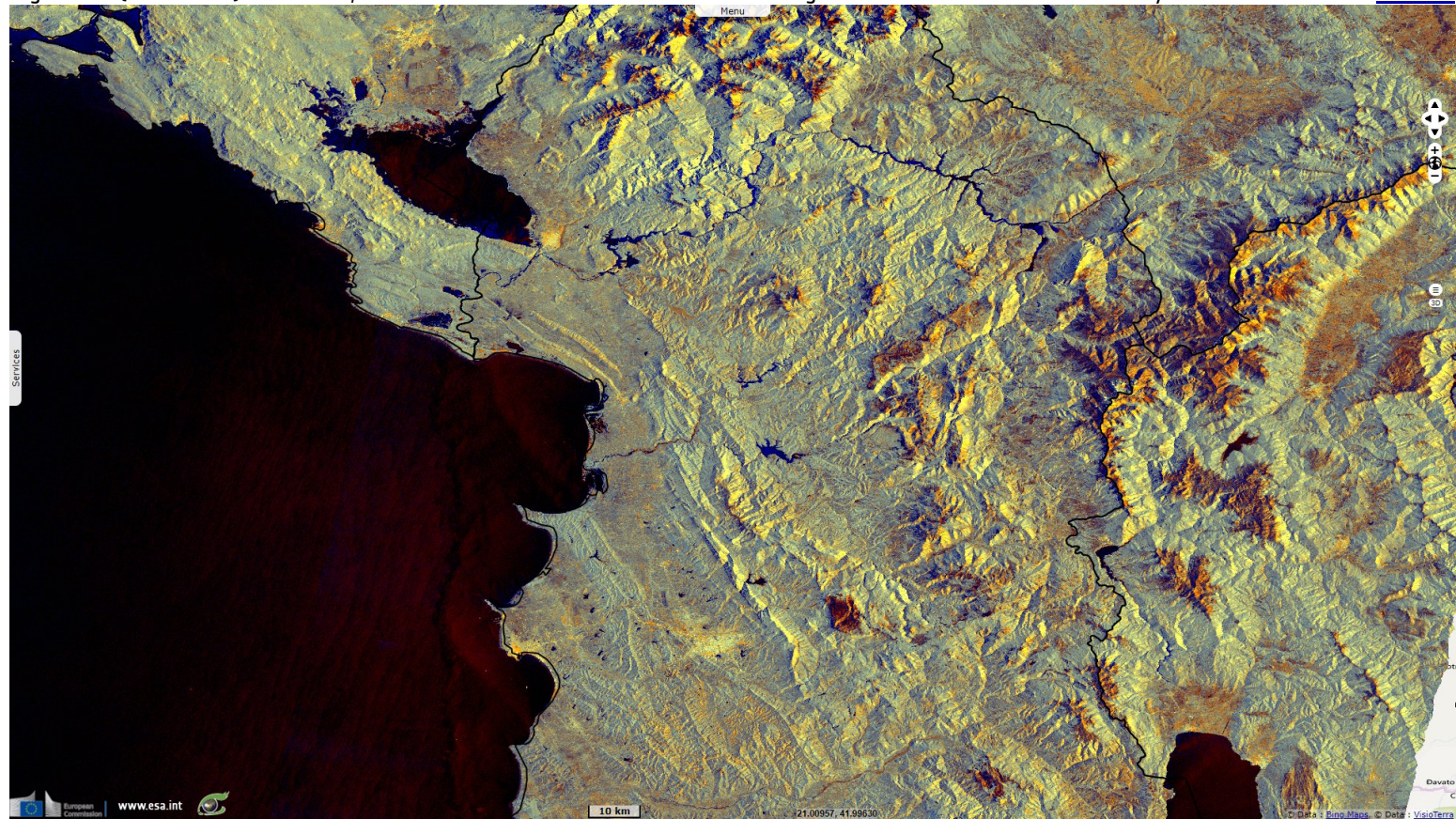


Fig. 3 - S1 (12.01.2021) - Meanwhile around 4,080 hectares of land was under water in Shkodër County.

[2D view](#)

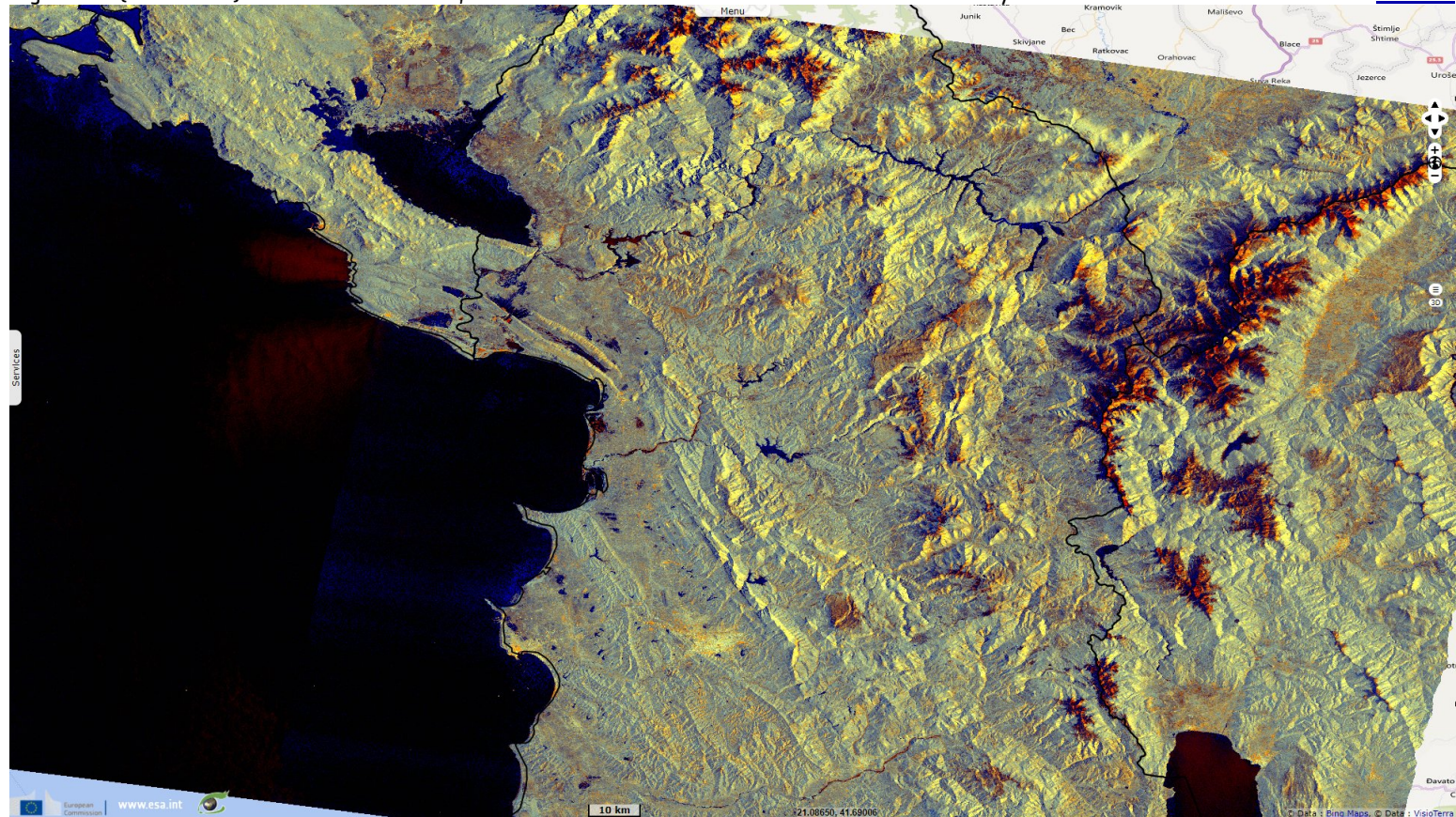
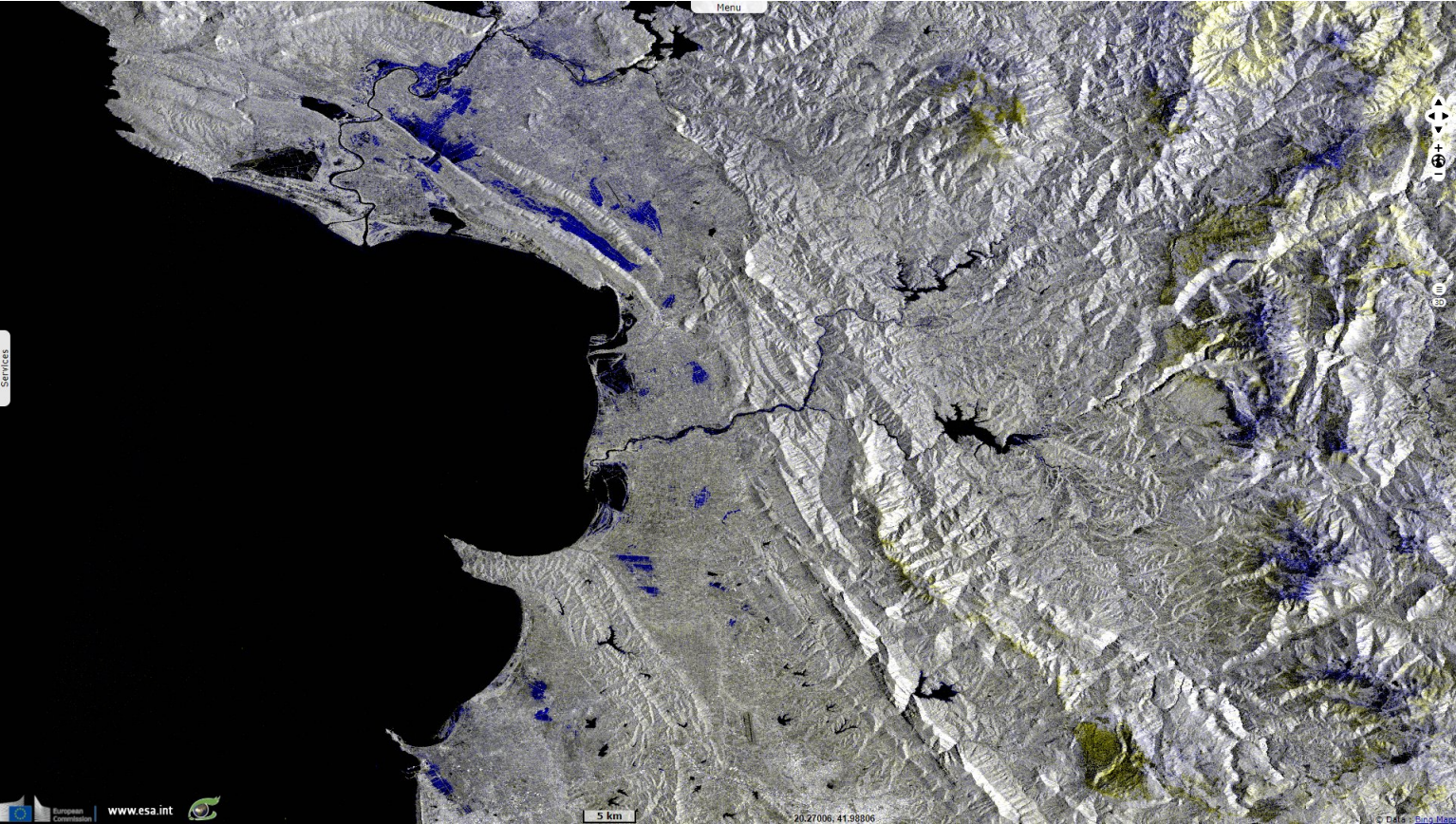














Fig. 4 - S1 (06 & 12.01.2021) - This multitime image highlights the affected areas.

[2D animation](#)



*The views expressed herein can in no way be taken to reflect the official opinion of the European Space Agency or the European Union.
Contains modified Copernicus Sentinel data 2021, processed by VisioTerra.*

More on European Commission space:							
More on ESA:				S-1 website	S-2 website	S-3 website	
More on Copernicus program:				SciHub portal	Cophub portal	Inthub portal	Colhub portal
More on VisioTerra:				Sentinel Vision Portal	Envisat+ERS portal	Swarm+GOCE portal	CryoSat portal