

# Powerful tide of the Lofoten Maelstrom, Norway

Sentinel-2 MSI acquired on 21 July 2017 at 11:06:21 UTC  
Sentinel-1 CSAR IW acquired on 28 July 2017 at 16:31:28 UTC  
Sentinel-2 MSI acquired on 20 July 2018 at 10:50:31 UTC  
Sentinel-1 CSAR IW acquired on 22 March 2019 at 05:44:44 UTC  
Sentinel-1 CSAR IW acquired on 22 March 2019 at 05:45:09 UTC

Author(s): Sentinel Vision team, VisioTerra, France - [svp@visioterra.fr](mailto:svp@visioterra.fr)

Keyword(s): Tide current, archipelago, security, water colour, Norwegian Sea



[2D Layerstack](#)

Fig. 1 - S2 (21.07.2017) - View of the Lofoten Maelstrom, locally named Moskstraumen, at ebb tide. The current front shows at west.

[2D view](#)



Fig. 2 - S1 (28.07.2017) - Ebb tide. It is one of the worlds strongest tidal currents in open ocean areas (> 3m/s).

[2D view](#)

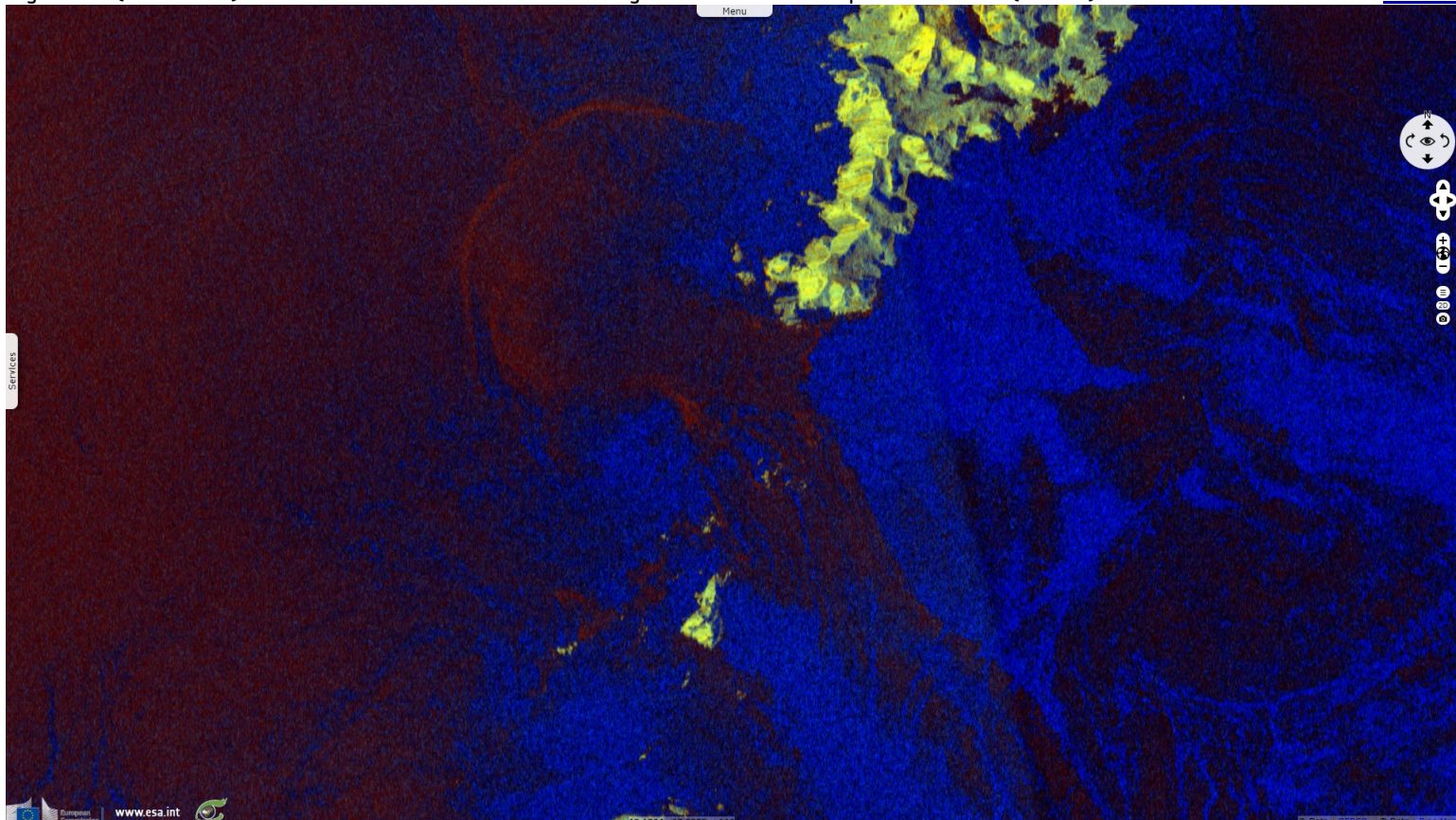




Fig. 3 - S1 (22.03.2019) - Flood tide. It is described in Nordic tales as a magical millstone grinding salt on the bottom of the ocean.

[2D view](#)

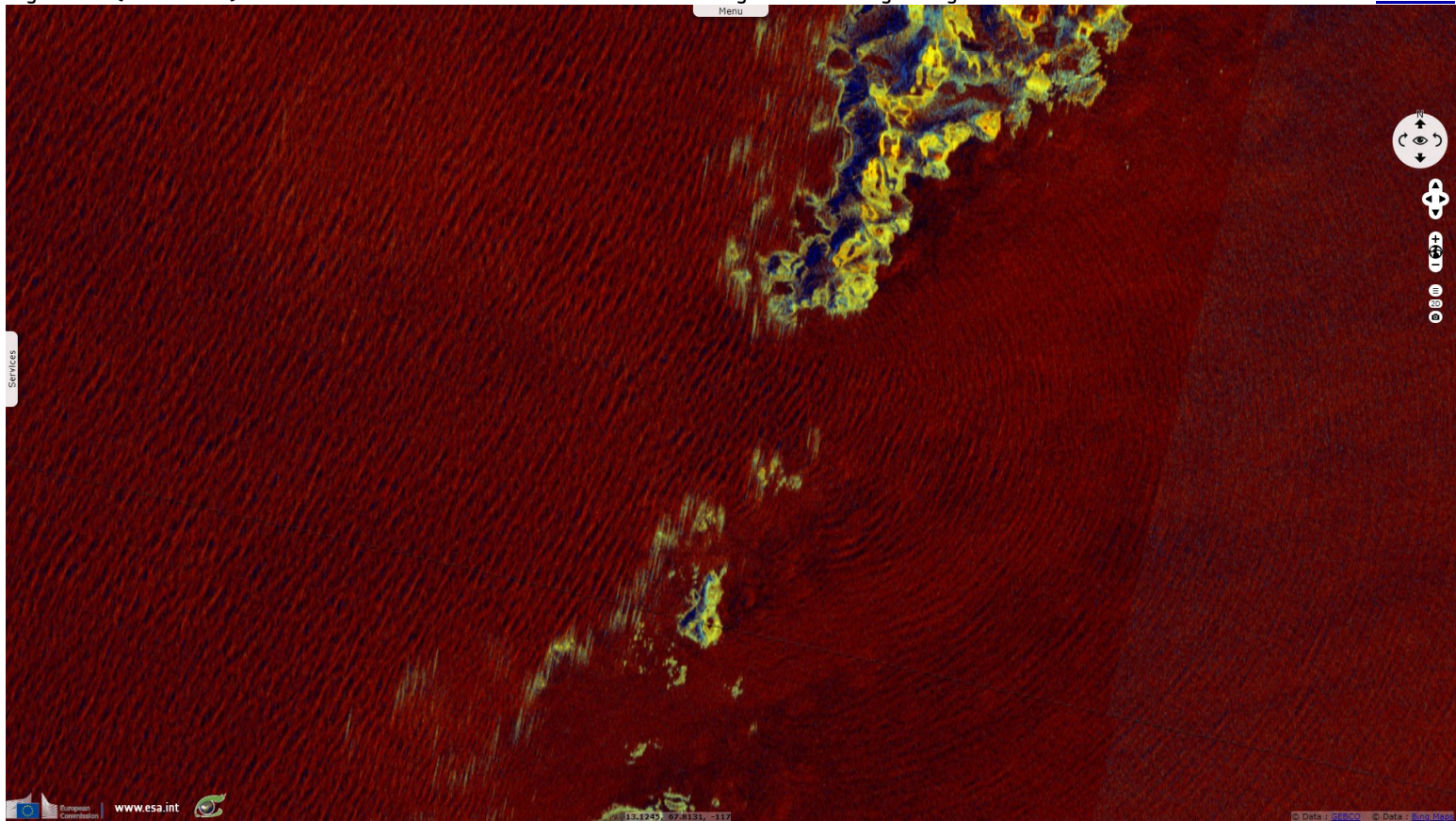


Fig. 4 - S2 (20.07.2018) - Flood tide - It was showed as a gigantic eddy in Olaus Magnus' map Carta Marina from 1539.

[2D view](#)



*The views expressed herein can in no way be taken to reflect the official opinion of the European Space Agency or the European Union.  
Contains modified Copernicus Sentinel data 2019, processed by VisioTerra.*

More on European Commission space:							
More on ESA:				<a href="#">S-1 website</a>	<a href="#">S-2 website</a>	<a href="#">S-3 website</a>	
More on Copernicus program:				<a href="#">SciHub portal</a>	<a href="#">Cophub portal</a>	<a href="#">Inthub portal</a>	<a href="#">Colhub portal</a>
More on VisioTerra:				<a href="#">Sentinel Vision Portal</a>	<a href="#">Envisat+ERS portal</a>	<a href="#">Swarm+GOCE portal</a>	<a href="#">CryoSat portal</a>