

Wildfire in Central Portugal eucalyptus forests

Sentinel-2 MSI acquired on 14 July 2019 at 11:21:21 UTC
Sentinel-5P TROPOMI CO & NO₂ acquired on 21 July 2019 at 13:24:32 UTC
Sentinel-3 OLCI FR acquired on 24 July 2019 at 10:47:34 UTC
Sentinel-3 SLSTR RBT acquired on 24 July 2019 at 10:47:34 UTC
Sentinel-2 MSI acquired on 24 July 2019 at 11:21:21 UTC

Author(s): Sentinel Vision team, VisioTerra, France - svp@visioterra.fr

Keyword(s): Emergency, man-made disaster, forestry, wildfire, climate change, heatwave, wind, Portugal.



[2D Layerstack](#)

Fig. 1 - S5P TROPOMI (21.07.2019) - NO₂ tropospheric column - A massive wildfire has spread almost 100 km² in Central Portugal.

[2D view](#)

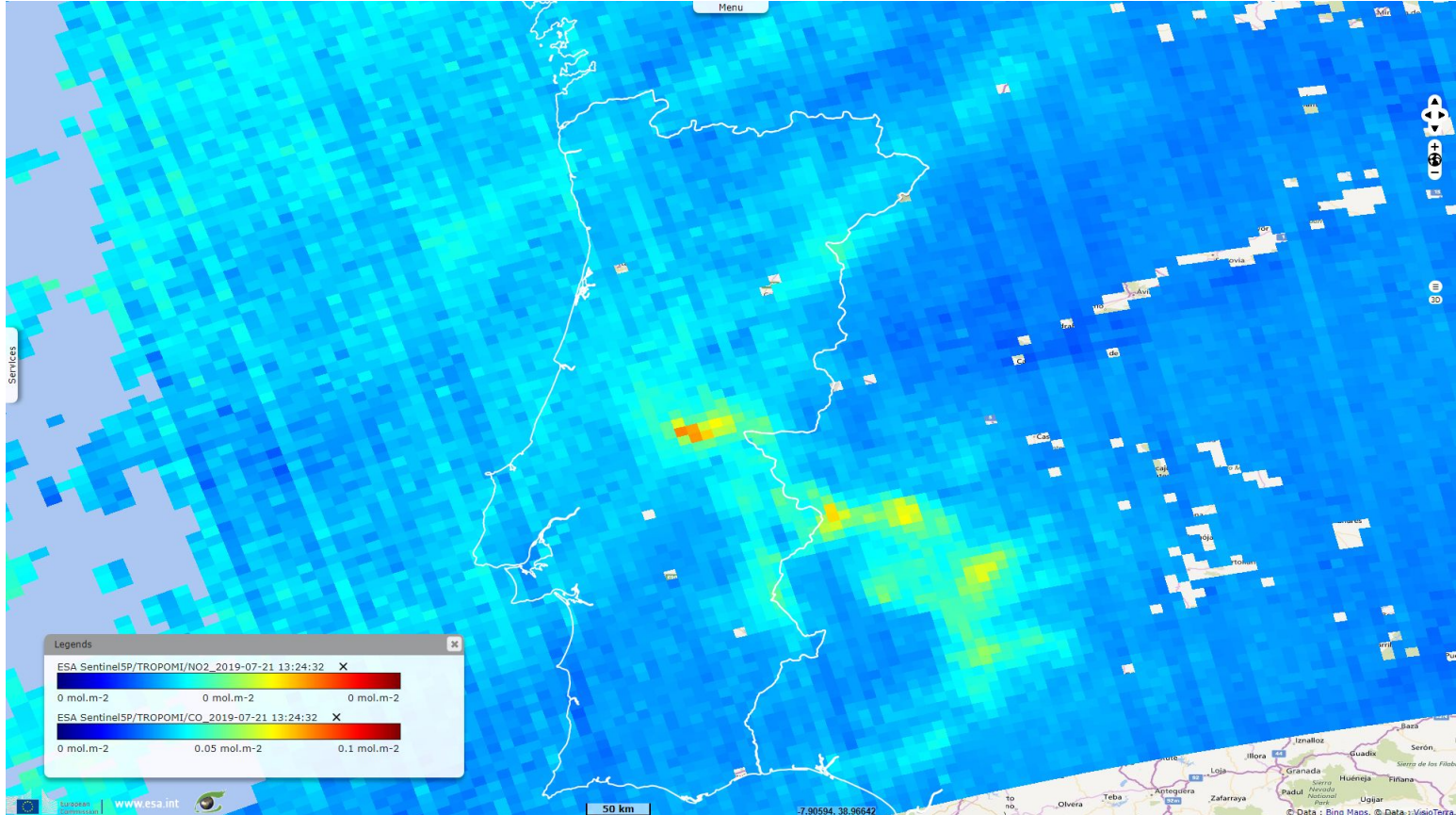


Fig. 2 - 21.07.2019] - CO total column - Probably man-made, it's been bolstered by strong wind gusts & temperatures over 35°C.

[2D view](#)

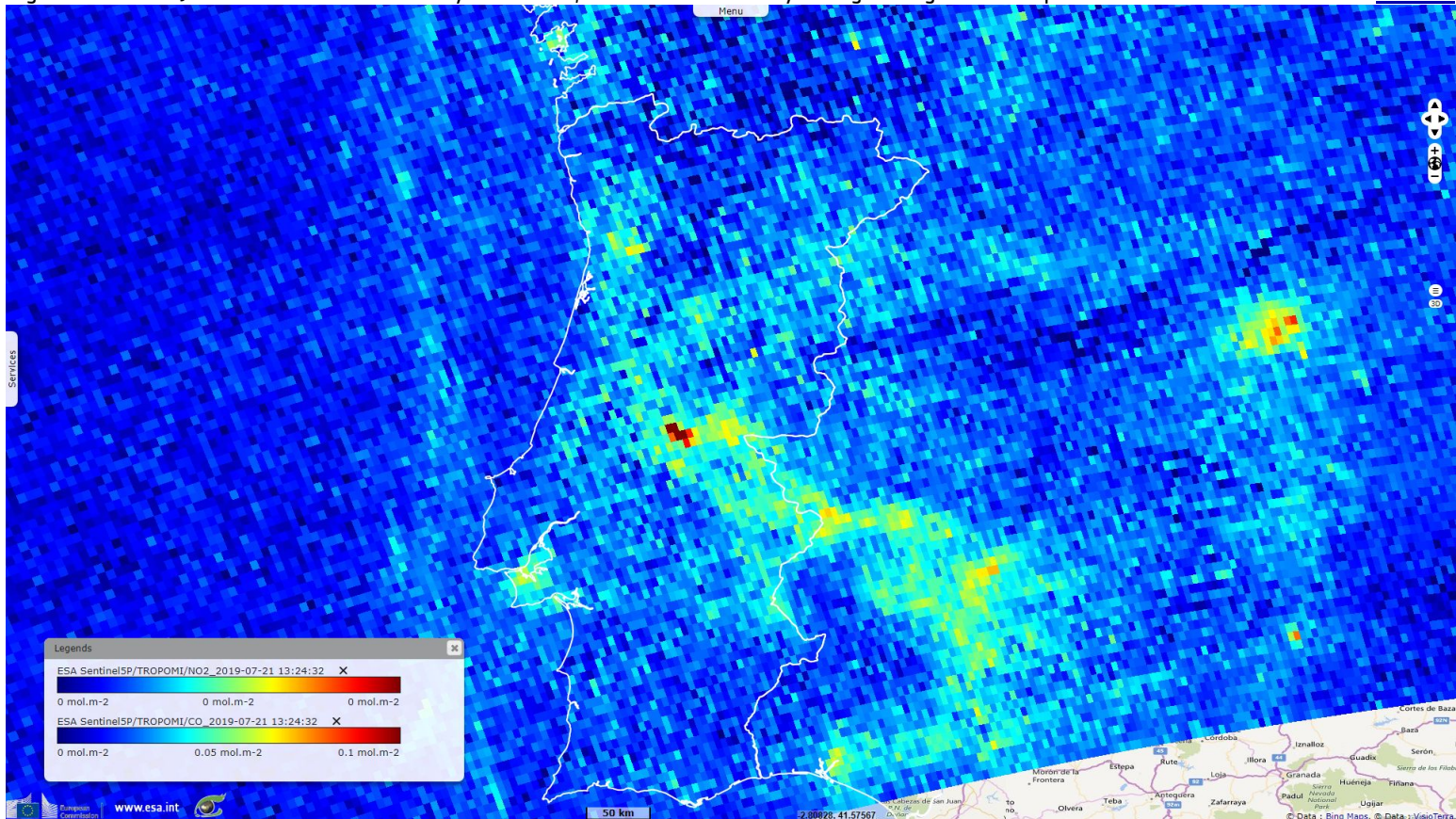


Fig. 3 - S2 (24.07.2019) - 12,11,2 composite - ~1800 firemen, 500 appliances, 8 planes & helicopters have been deployed. [3D animation](#) [3D view](#)

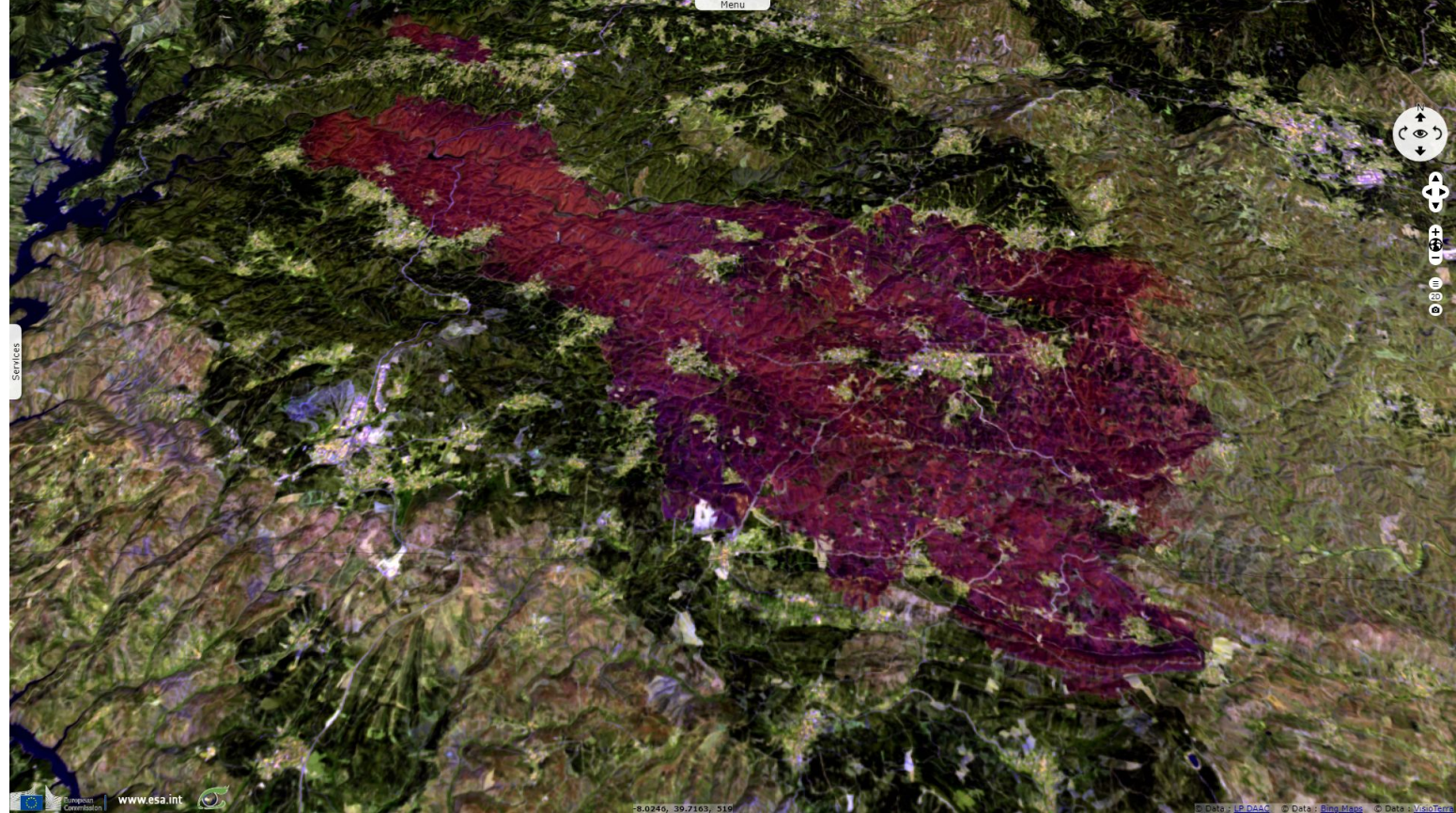
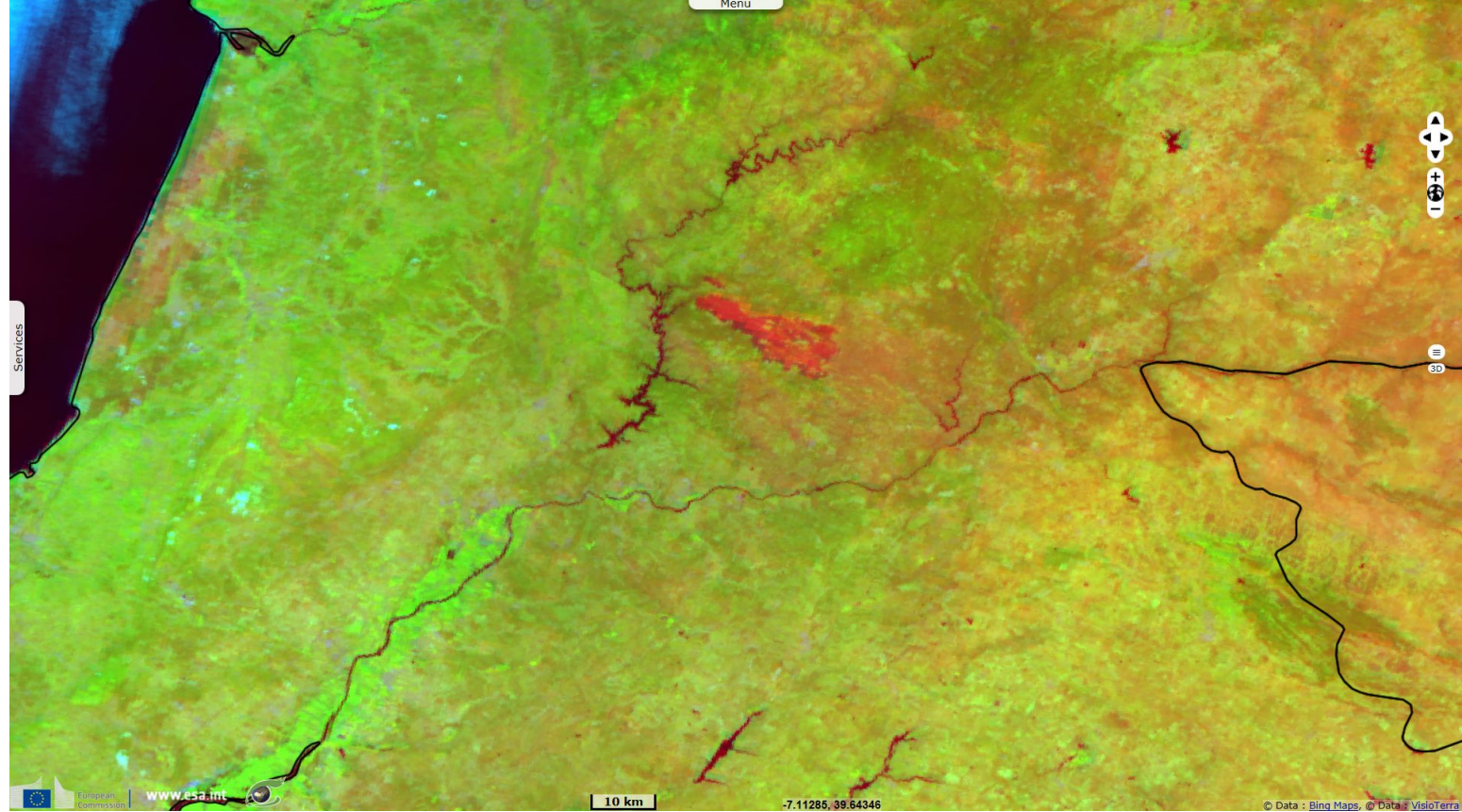


Fig. 4 - S3 OLCI+SLSTR (24.07.2019) - red=(SLSTR thermal), green=(OLCI 0a20), blue=(OLCI 0a03) - A nearby wildfire had killed 66 in 2017. [2D view](#)



The views expressed herein can in no way be taken to reflect the official opinion of the European Space Agency or the European Union.
Contains modified Copernicus Sentinel data 2019, processed by VisioTerra.

More on European Commission space:						
More on ESA:				S-1 website	S-2 website	S-3 website
More on Copernicus program:				SciHub portal	Cophub portal	Inthub portal
More on VisioTerra:				Sentinel Vision Portal	Envisat+ERS portal	Swarm+GOCE portal
					CryoSat portal	