

Kawah Ijen (Java Island) volcanic lake

Sentinel-2 MSI acquired on 16 April 2017 at 02:25:51 UTC

Author(s): Sentinel Vision team, VisioTerra, France - svp@visioterra.fr

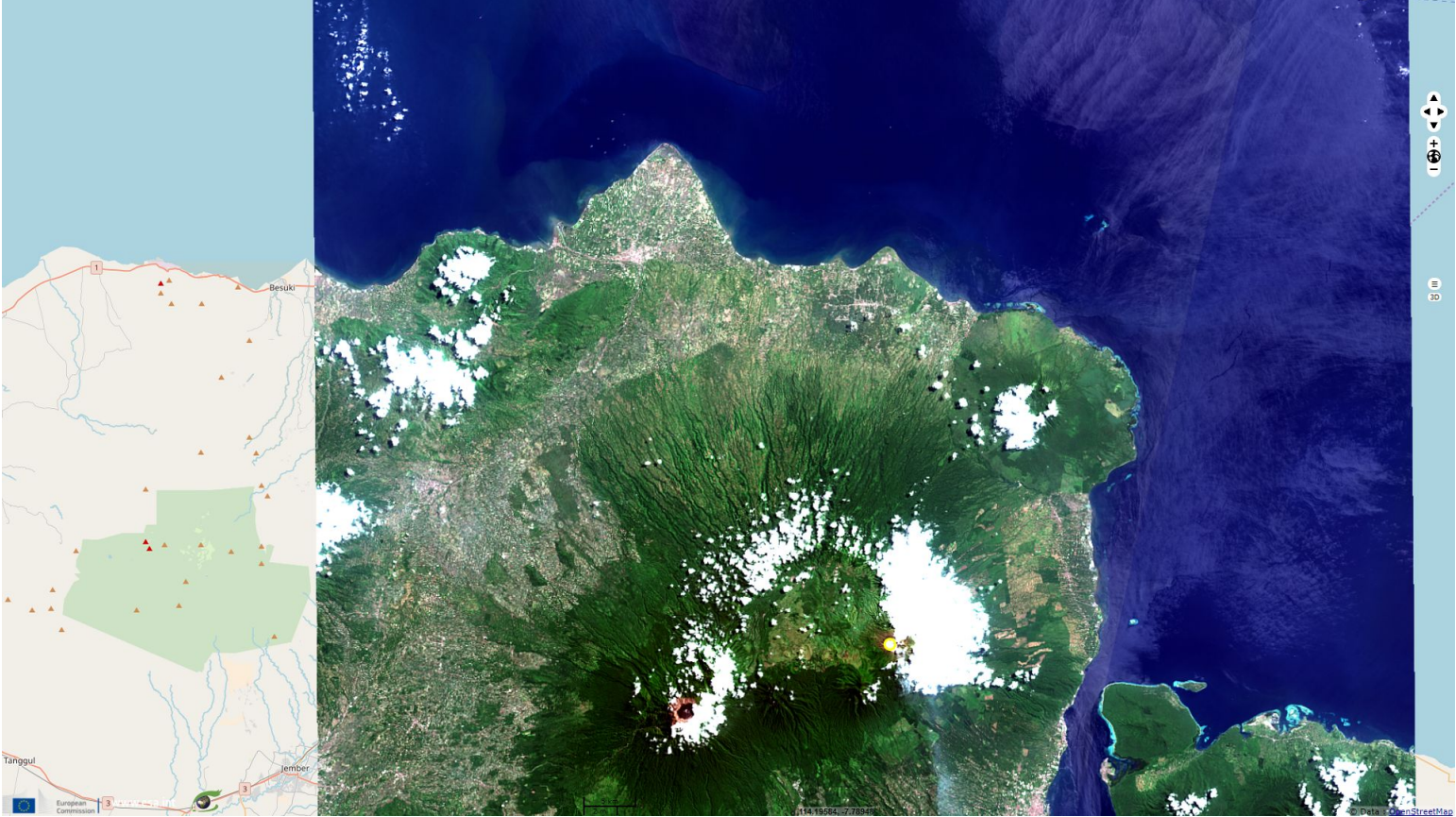
Keyword(s): land, volcano, caldera, acidic, sulfuric, hydrochloric lake, Java, Indonesia



[3D Layerstack](#)

Fig. 1 - 4-3-2 natural colour - Located in the far east of Java island, Indonesia, the Ijen volcano is an active explosive volcano.

[3D view](#) [2D view](#)



The vegetation established on the Ijen flanks are visible in green (its name means "green crater" in Javanese) surrounded by cities.

Fig. 2 - 8-11-2 colour composite - Its summit crater contains a "solfatar" from which is extracted sulfur ore.

[3D view](#) [2D view](#)

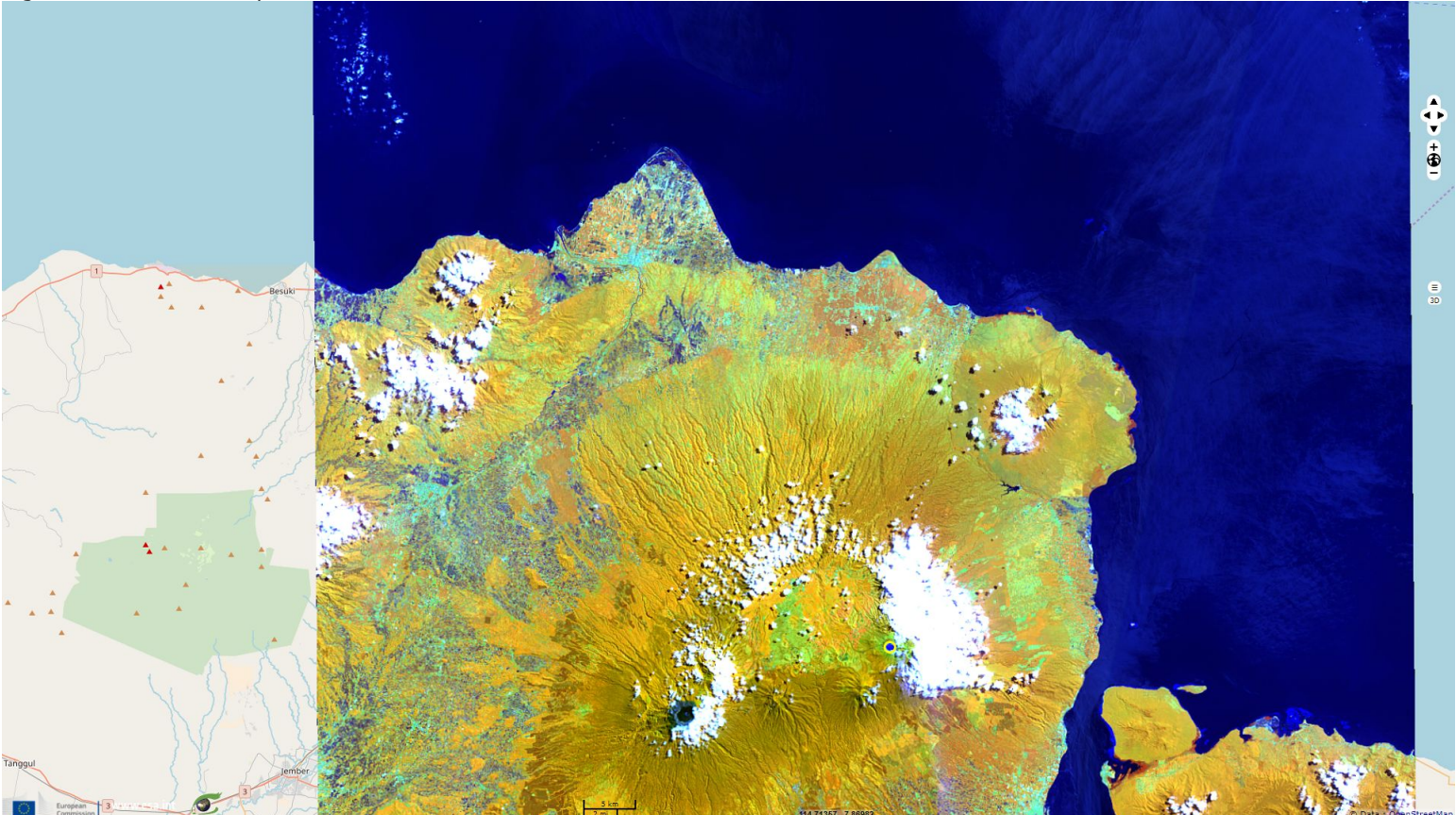


Fig. 3 - 4,3,2 colour composite (strong stretching) - At night, blue sulfur flames are visible in Kawah Ijen sulfuric and hydrochloric lake.

[2D view](#)

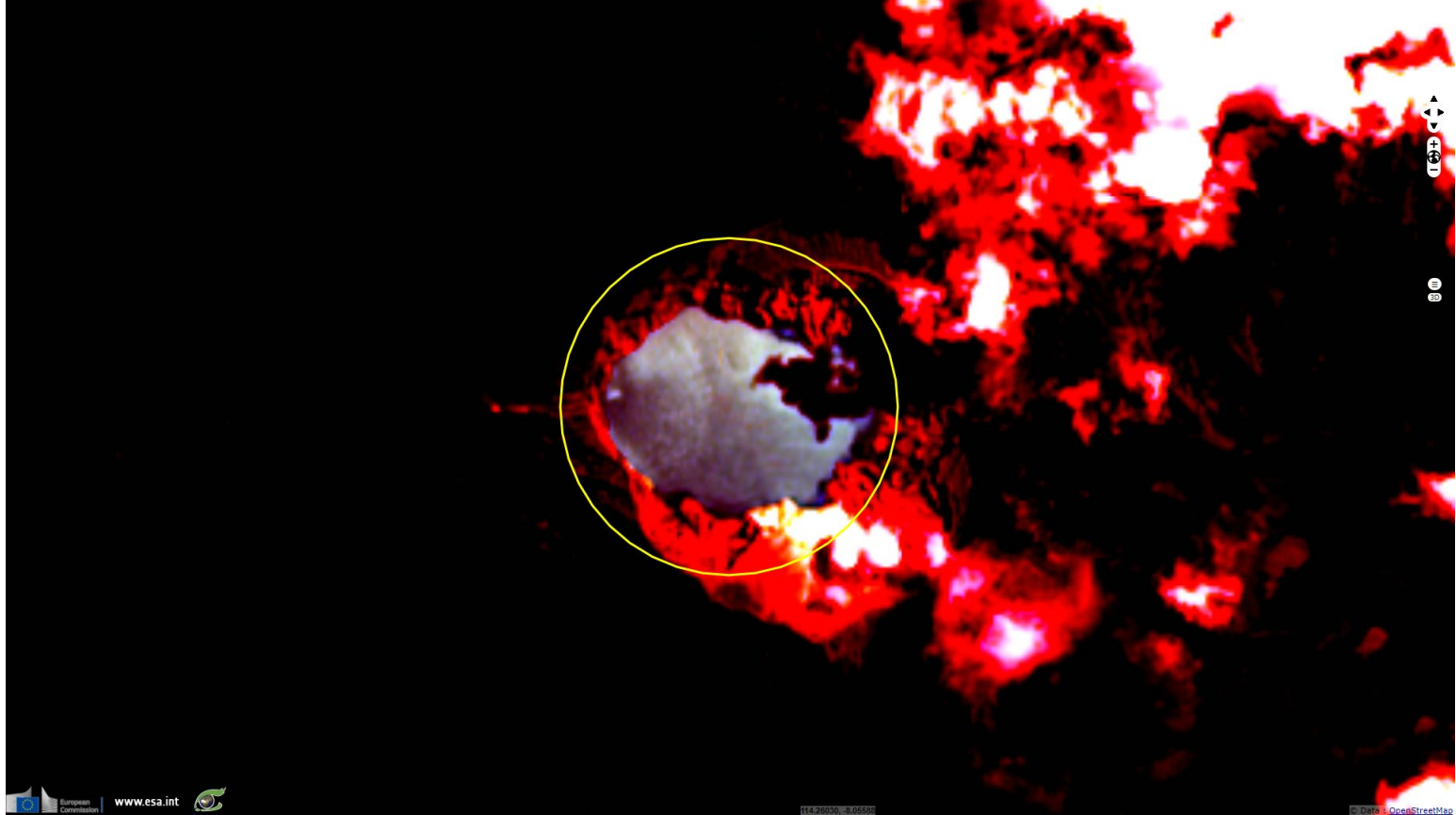
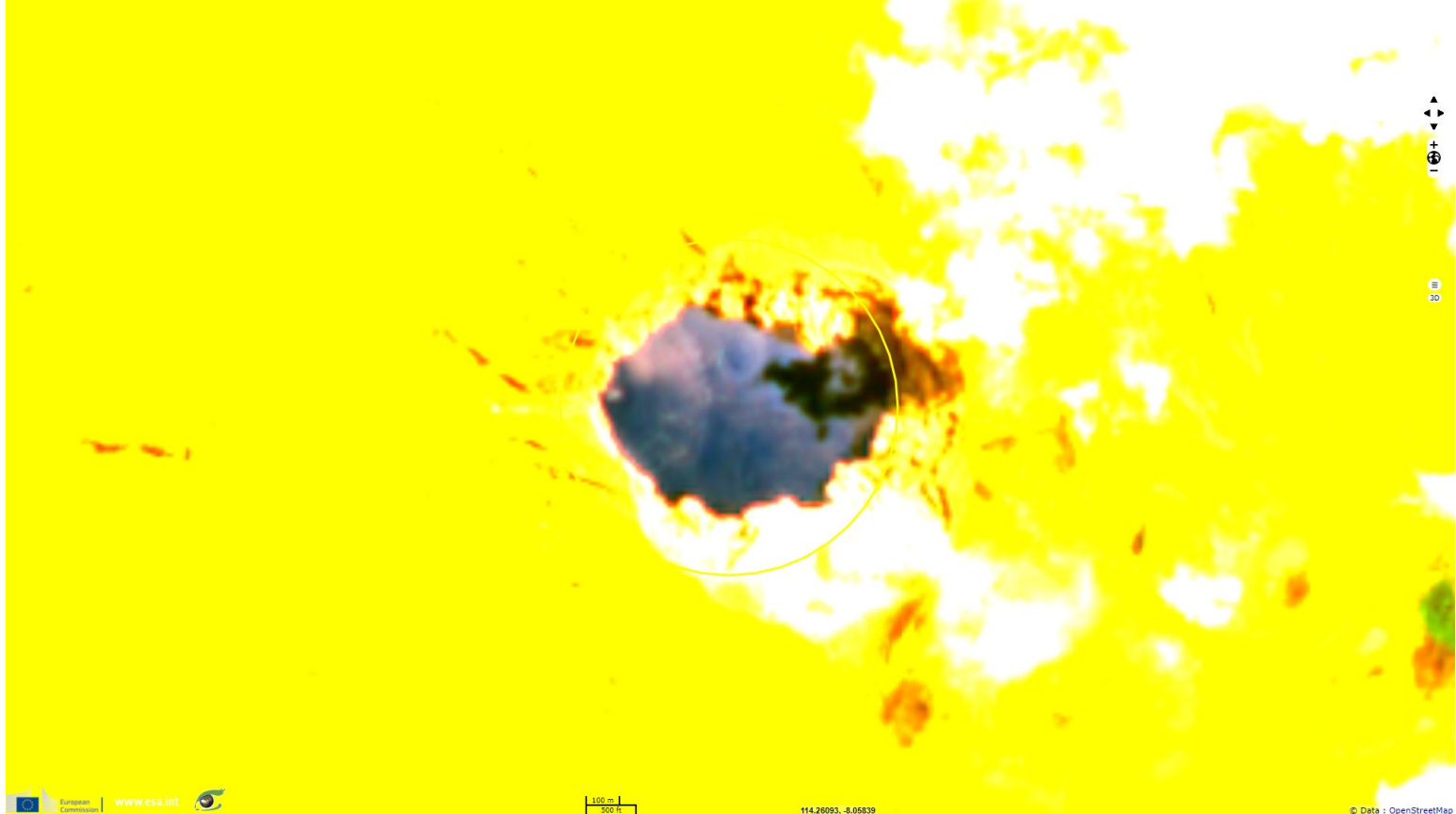


Fig. 4 - 11-8-4 colour composite (strong stretching) - This caldera lake is known to be the world's largest highly acidic with a pH 0.2.

[2D view](#)



The views expressed herein can in no way be taken to reflect the official opinion of the European Space Agency or the European Union.

More on European Commission space:								
More on ESA:				S-1 website	S-2 website	S-3 website		
More on Copernicus program:				SciHub portal	Cophub portal	Inthub portal	Colhub portal	
More on VisioTerra:				Sentinel Vision Portal	Envisat+ERS portal	Swarm+GOCE portal	CryoSat portal	Proba-V portal