

Artemis-1 flight for the Moon delayed, Florida, USA

Sentinel-2 MSI acquired on 29 March 2022 at 15:58:19 UTC
Sentinel-1 CSAR IW acquired on 22 July 2022 at 23:29:08 UTC
Sentinel-1 CSAR IW acquired on 03 August 2022 at 23:29:09 UTC
Sentinel-2 MSI acquired on 08 August 2022 at 16:05:21 UTC
Sentinel-1 CSAR IW acquired on 15 August 2022 at 23:29:10 UTC
Sentinel-2 MSI acquired on 23 August 2022 at 16:05:09 UTC
Sentinel-1 CSAR IW acquired on 27 August 2022 at 23:29:10 UTC

Author(s): Sentinel Vision team, VisioTerra, France - svp@visioterra.fr

Keyword(s): Land, launchpad, space agency, NASA, Florida, United States, USA



[2D Layerstack](#)

Fig. 1 - S1 (22.07.2022-15.08.2022) - The Kennedy Space Center lies in Florida, next to Cape Canaveral.

[2D view](#)

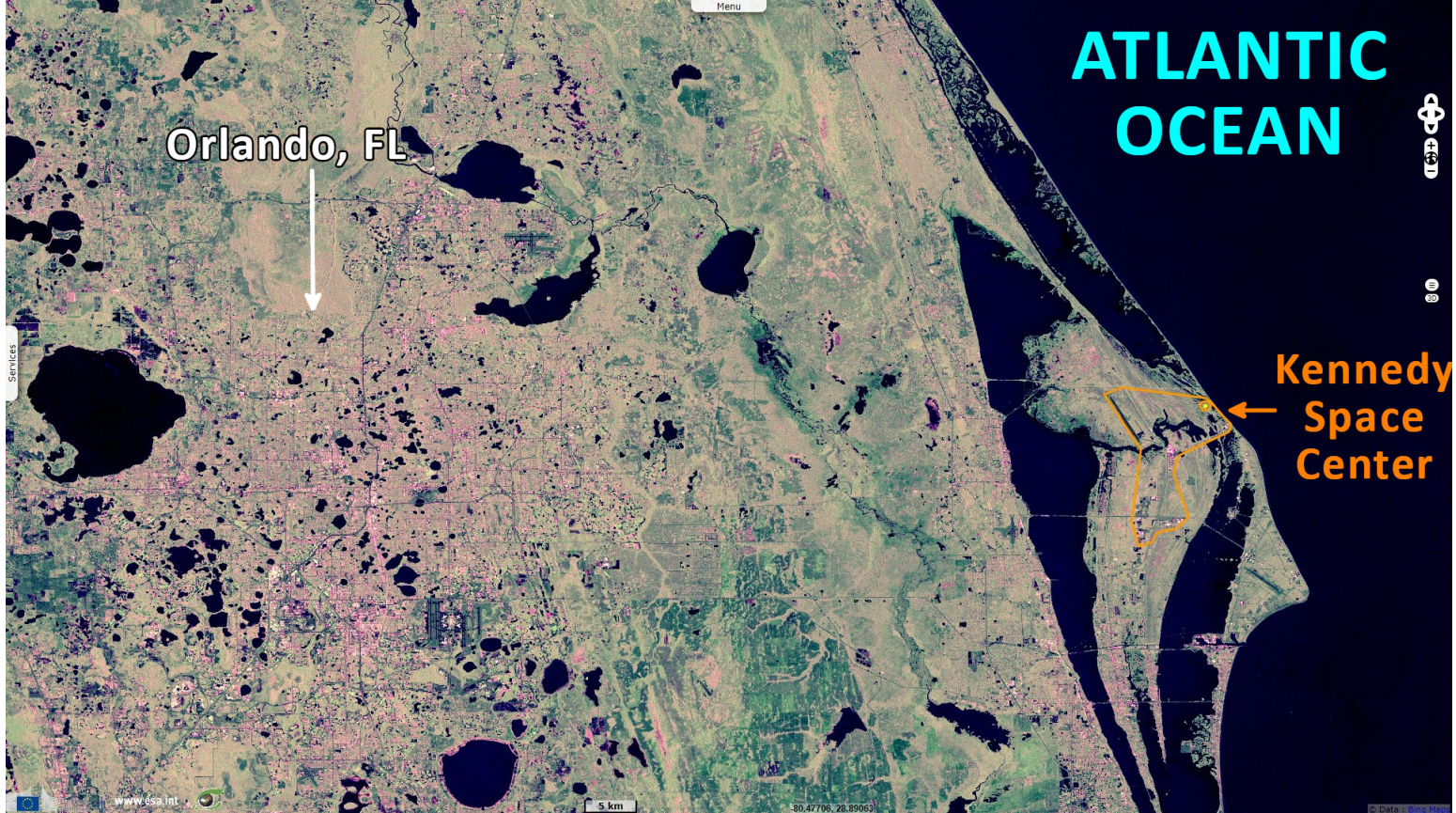


Fig. 2 - S2 (29.03.2022) - Launch operations for the Apollo programs were carried out from Kennedy Space Center Launch Complex 39.

[2D view](#)

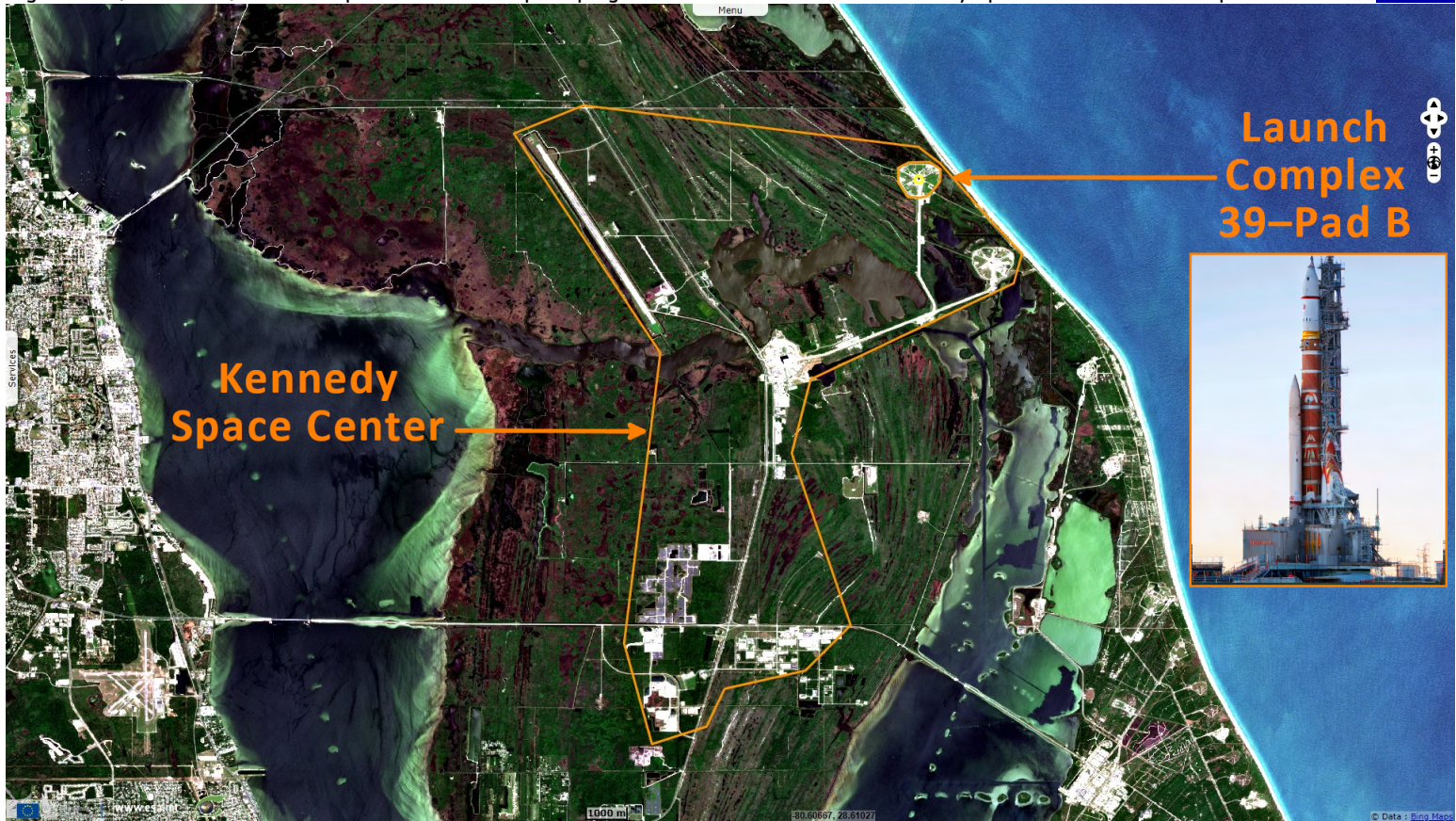
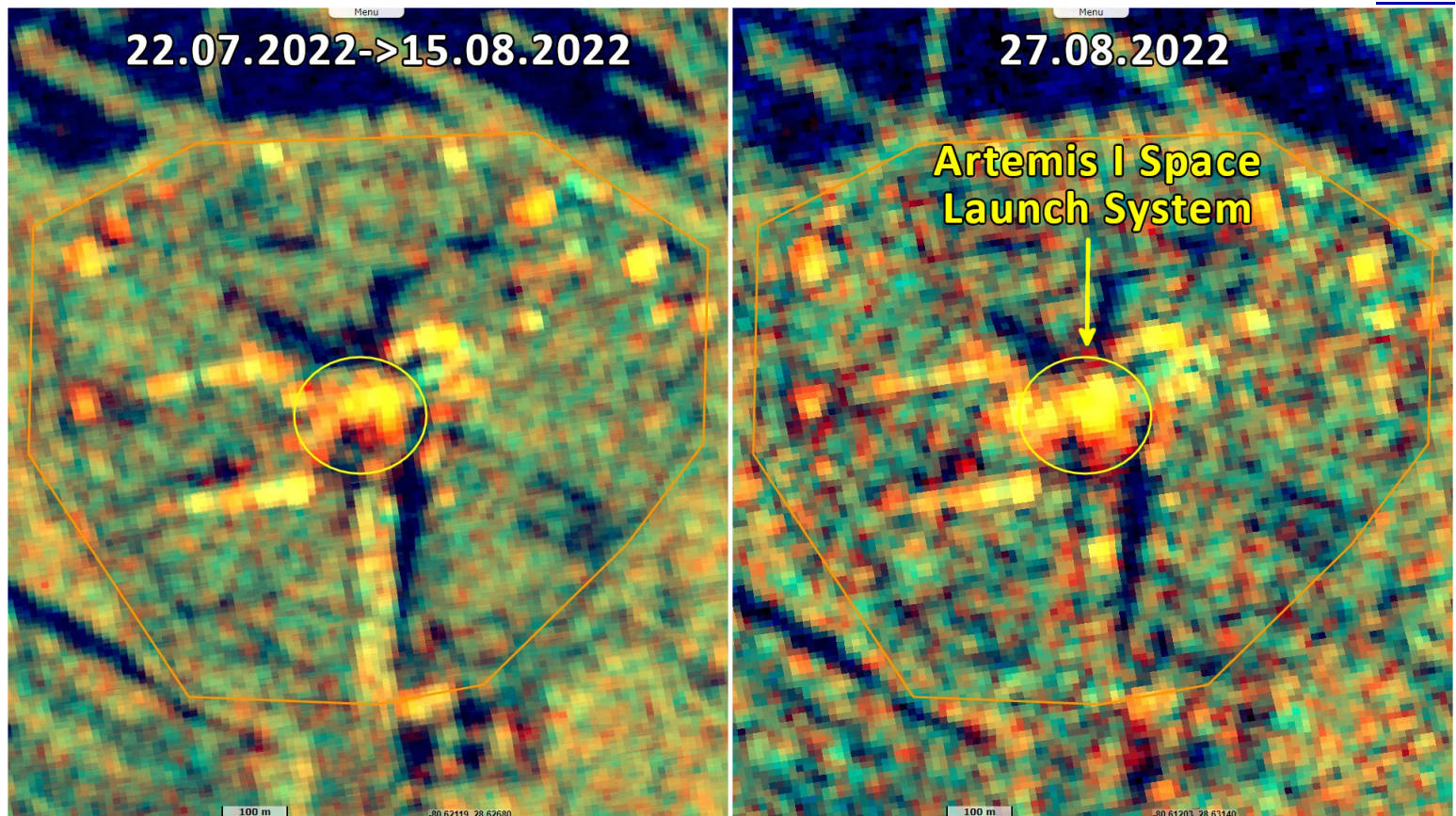


Fig. 3 - S1 (22.07.2022->15.08.2022; 27.08.2022) - Artemis 1 uncrewed Moon-orbiting mission is to be launched from the same launchpad.

[2D view](#)

[2D view](#)





The views expressed herein can in no way be taken to reflect the official opinion of the European Space Agency or the European Union.
 Contains modified Copernicus Sentinel data 2022, processed by VisioTerra.

More on European Commission space:						
More on ESA:				S-1 website	S-2 website	S-3 website
More on Copernicus program:				SciHub portal	CopHub portal	Inthub portal
More on VisioTerra:				Sentinel Vision Portal	Envisat+ERS portal	Swarm+GOCE portal
				CryoSat portal		



Funded by the EU and ESA

SED-1140-SentinelVision

