

# Langres karst plateau, hydrologic tripoint & cradle of French rivers

Sentinel-2 MSI acquired on 15 October 2017 at 10:40:09 UTC  
Sentinel-1 CSAR IW acquired on 23 December 2017 at 17:31:47 UTC  
Sentinel-1 CSAR IW acquired on 26 January 2018 at 05:50:27 UTC

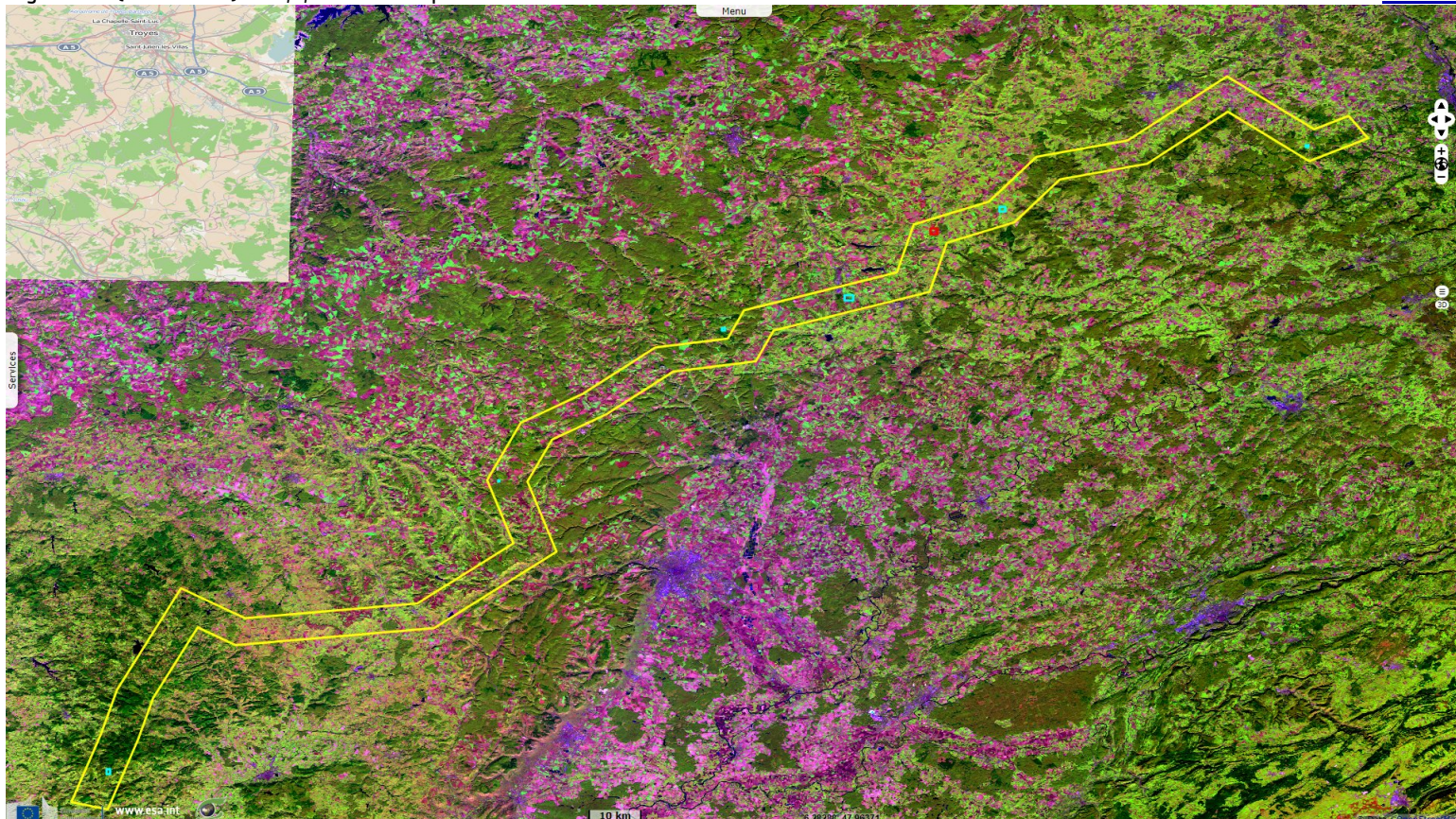
Author(s): Sentinel Vision team, VisioTerra, France - [svp@visioterra.fr](mailto:svp@visioterra.fr)

Keyword(s): River, hydrology, geology, basin, mountain range, transport, watershed, France

[2D Layerstack](#)

Fig. 1 - S2 (15.10.2017) - 11,8,2 colour composite

[2D view](#)

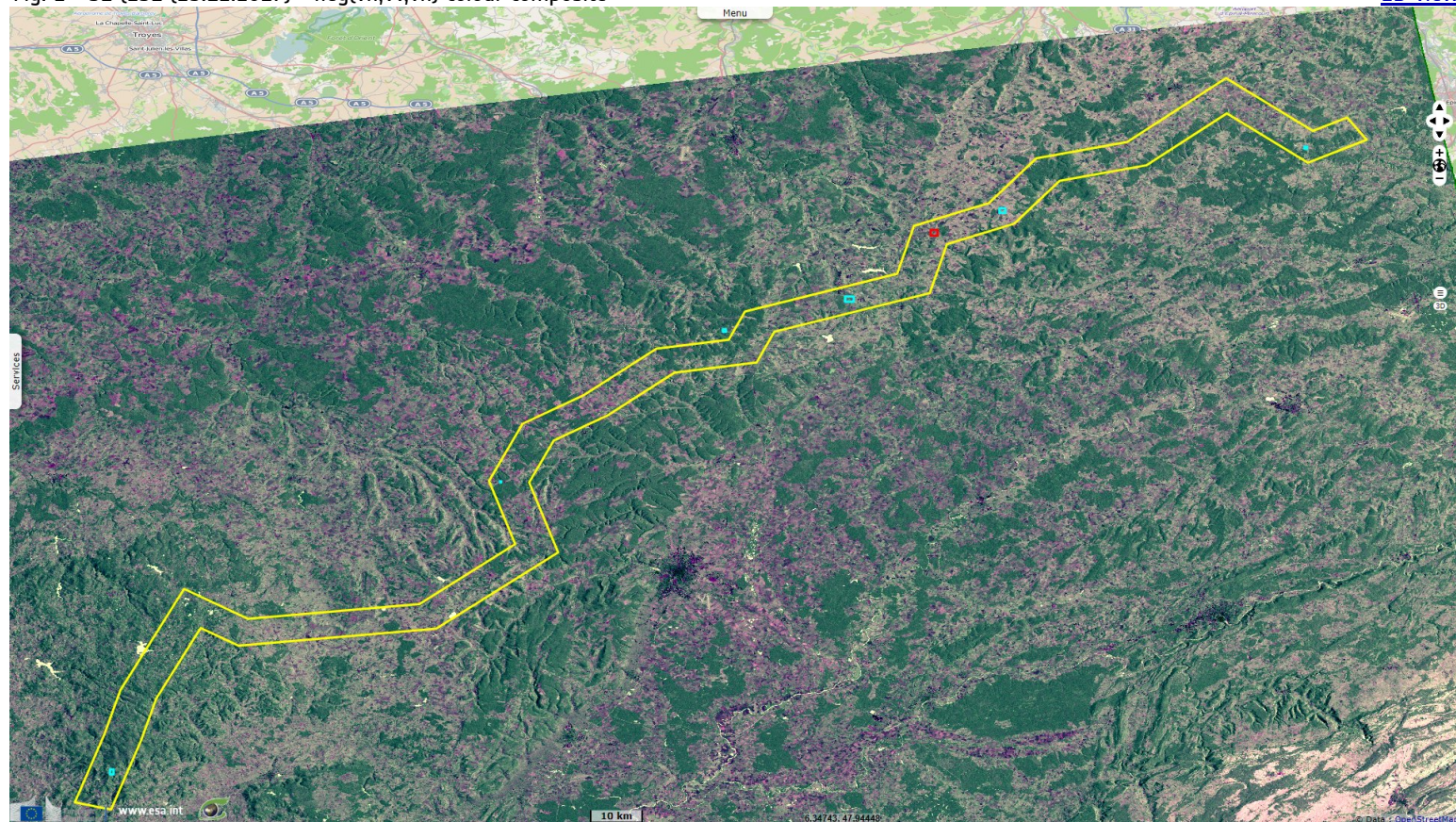


Centred on Langres plateau, this small south-west north-east scarp from the north of Morvan to the south of Vosges is the cradle of several major French rivers flowing to 3 different seas.



Fig. 2 - S1 (23.12.2017) -  $\text{neg}(\text{vh}, \text{vv}, \text{vh})$  colour composite

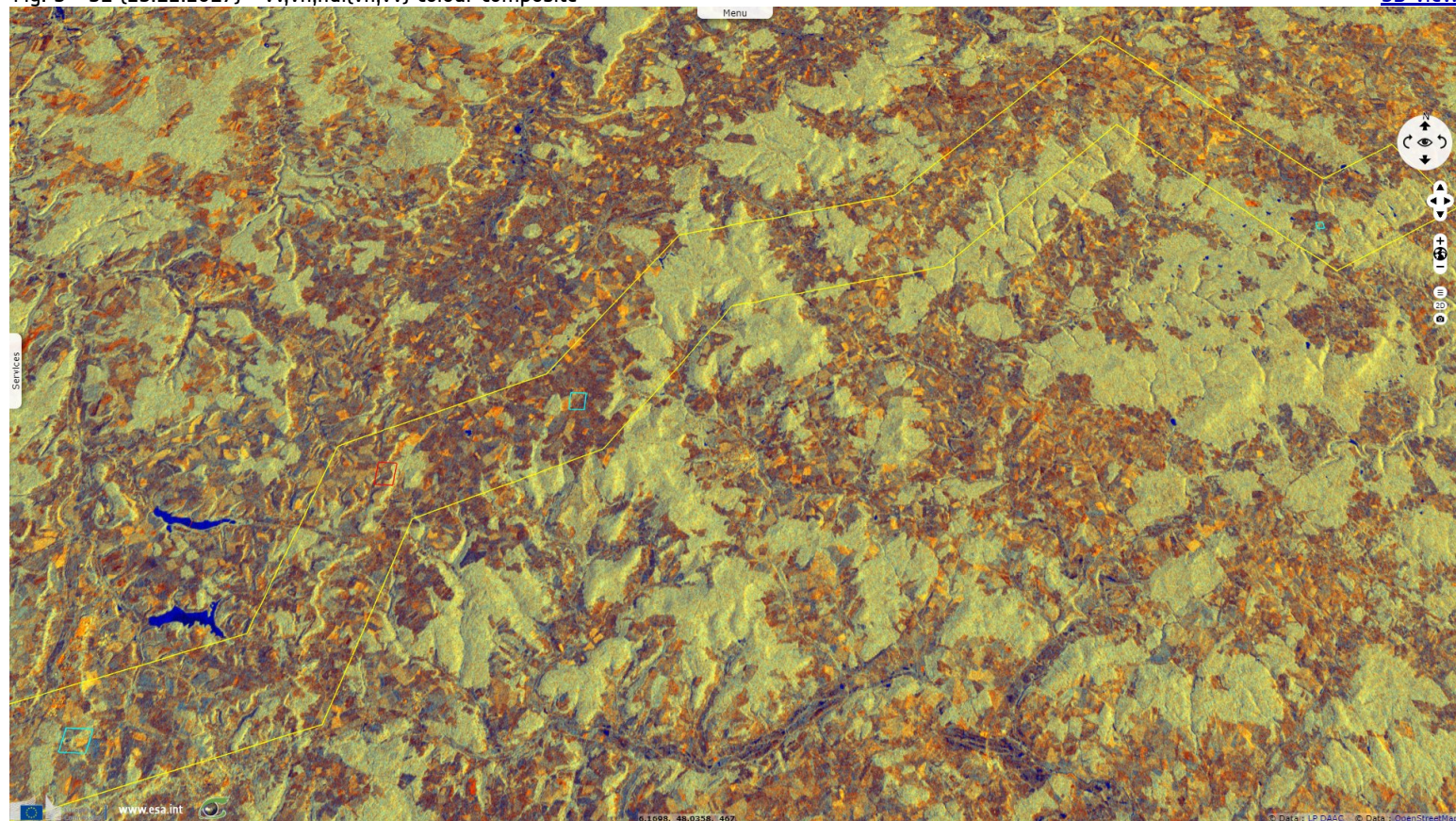
[2D view](#)



River Seine and its bigger tributaries, Yonne and Aube are born in its south-west part, river Saône at its north-east stretches.

Fig. 3 - S1 (23.12.2017) -  $\text{vv}, \text{vh}, \text{ndi}(\text{vh}, \text{vv})$  colour composite

[3D view](#)

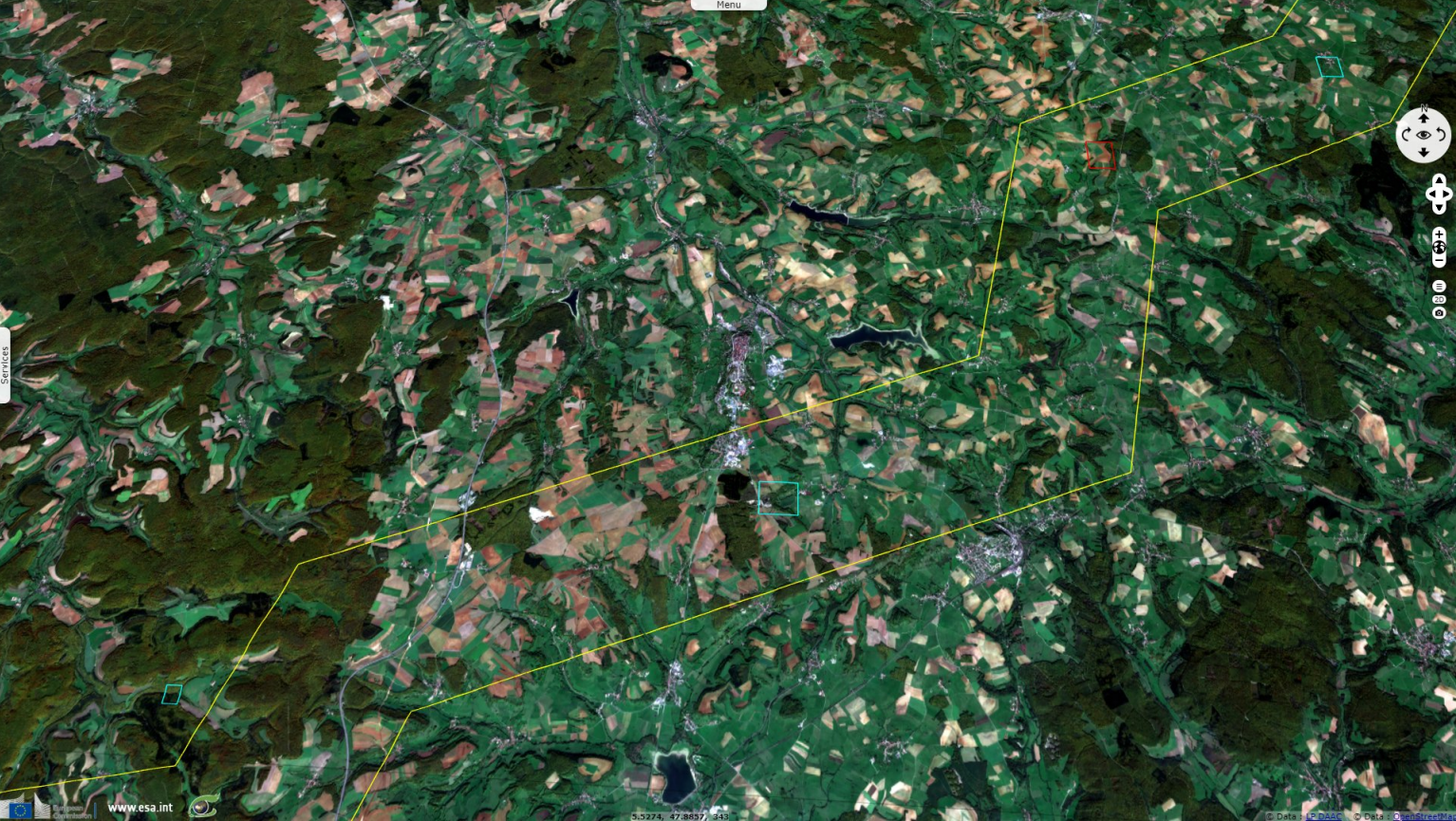


The source of Aube, Marne, Meuse rivers as well as the watershed tripoint between Mediterranean, Channel & North Seas lie on a 50 km line.















Fig. 4 - S2 (15.10.2017) - 4,3,2 colour composite

3D view



At west is the Paris Basin in which flows river Seine, at north is the Meuse basin, at South-East is the Saône basin which is encompassed in the Rhône basin.

*The views expressed herein can in no way be taken to reflect the official opinion of the European Space Agency or the European Union.  
Contains modified Copernicus Sentinel data 2019, processed by VisioTerra.*

More on European Commission space:							
More on ESA:				<a href="#">S-1 website</a>	<a href="#">S-2 website</a>	<a href="#">S-3 website</a>	
More on Copernicus program:				<a href="#">Scihub_portal</a>	<a href="#">Cophub_portal</a>	<a href="#">Inthub_portal</a>	<a href="#">Colhub_portal</a>
More on VisioTerra:				<a href="#">Sentinel Vision Portal</a>	<a href="#">Envisat+ERS_portal</a>	<a href="#">Swarm+GOCE_portal</a>	<a href="#">CryoSat_portal</a>